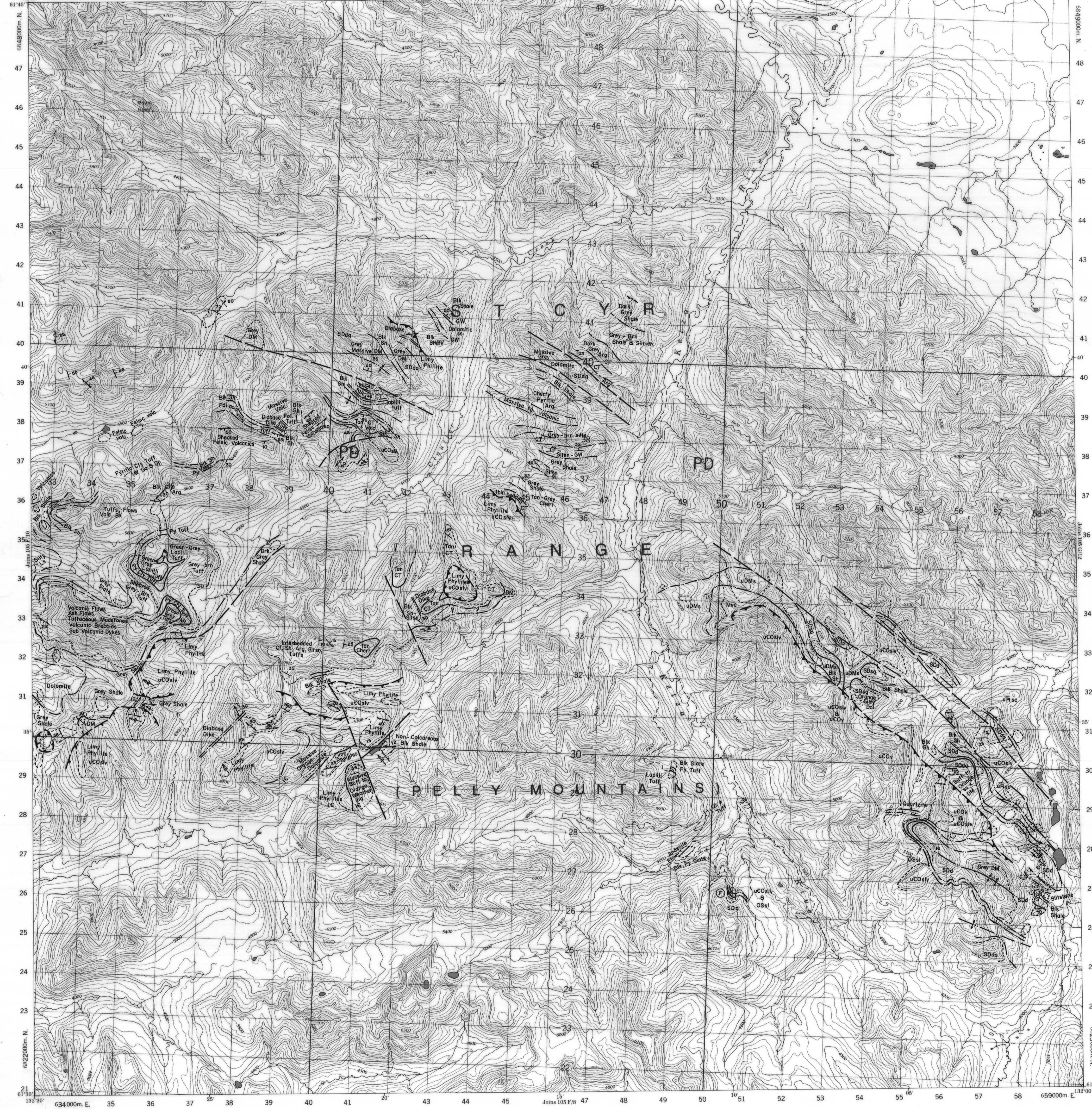


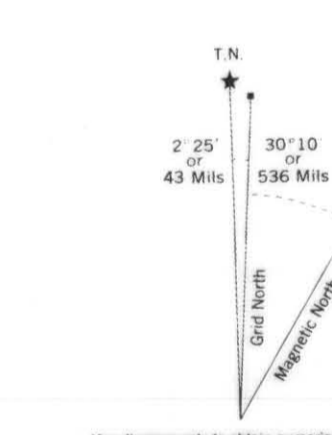
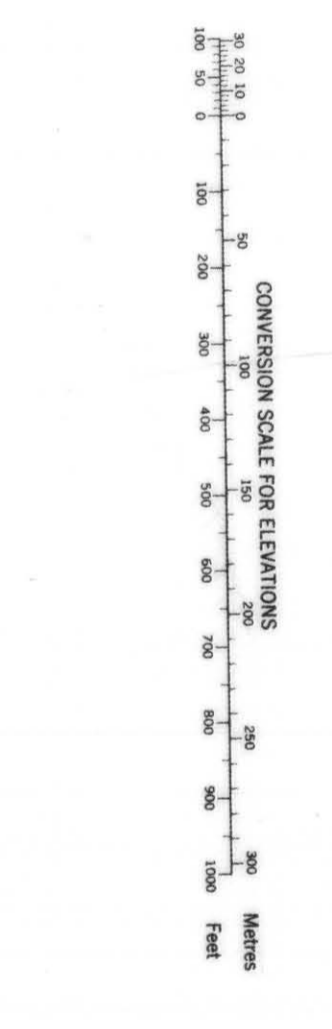
105 F-9 Pelly
 Project, 1977 Summary
 Fig. 102 Geological Map
 1:50,000
 1/21/78

HF 2-443

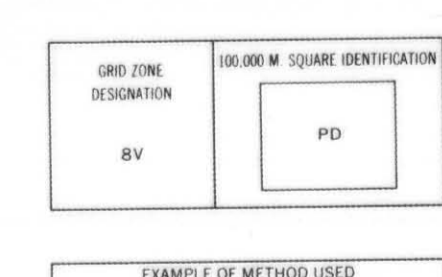
PROVISIONAL MAP 105 F/9 633000m E. 34 35 36 37 38 39 40 41 42 43 44 45 46 47 48 49 50 51 52 53 54 55 56 57 58 657000m E. 105 F/9
 CANADA EDITION 1
 CARTE PROVISOIRE 105 F/9



Refer to 105 F/9
 this map at EDITION 1 USE
 SERIES A 102



ONE THOUSAND METRE
 UNIVERSAL TRANSVERSE MERCATOR GRID
 ZONE 5



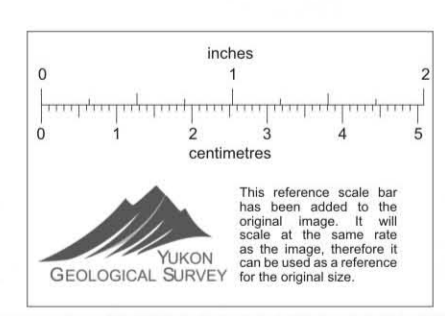
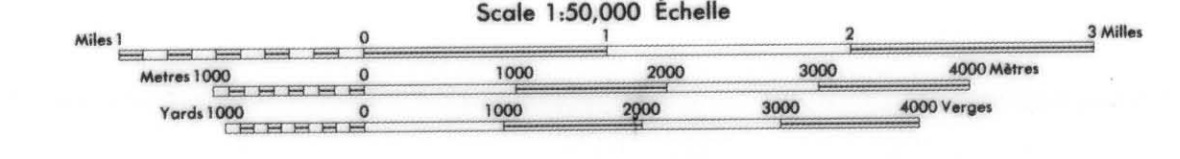
EXAMPLES OF METHODS USED TO OBTAIN A REPRESENTATIVE 1:50,000 METRE SCALE

REFERENCE POINT	CHANGES (see above)
1950	1950
1955	1955
1960	1960
1965	1965
1970	1970
1975	1975
1980	1980
1985	1985
1990	1990
1995	1995
2000	2000

Compiled by the SURVEY AND MAPPING BRANCH, DEPARTMENT OF ENERGY, MINES AND TECHNICAL SERVICES, CANADA, from the following sources: 1. Aerial photographs, 2. Topographic maps, 3. Geological maps, 4. Field notes, 5. Other available information.

Scale 1:50,000
 1:50,000
 1:50,000

CLOUTIER CREEK
 YUKON TERRITORY



This Provisional Map is prepared to a standard that is not guaranteed.

Carte provisoire préparée avec des renseignements qui ne sont pas garantis.

Map prepared in the direction of the level of the Cartographie Ministère des Ressources Industrielles et Commerciales.

105 F/9
 EDITION 1

CYPRUS ANVIL MINING CORPORATION

PELLY PROJECT
 REGIONAL GEOLOGY MAP: 105 F/9

REVISED: 105 F/9
 DRAWN BY: C. L. C.
 DATE: FEB. 27, 1978

1010068