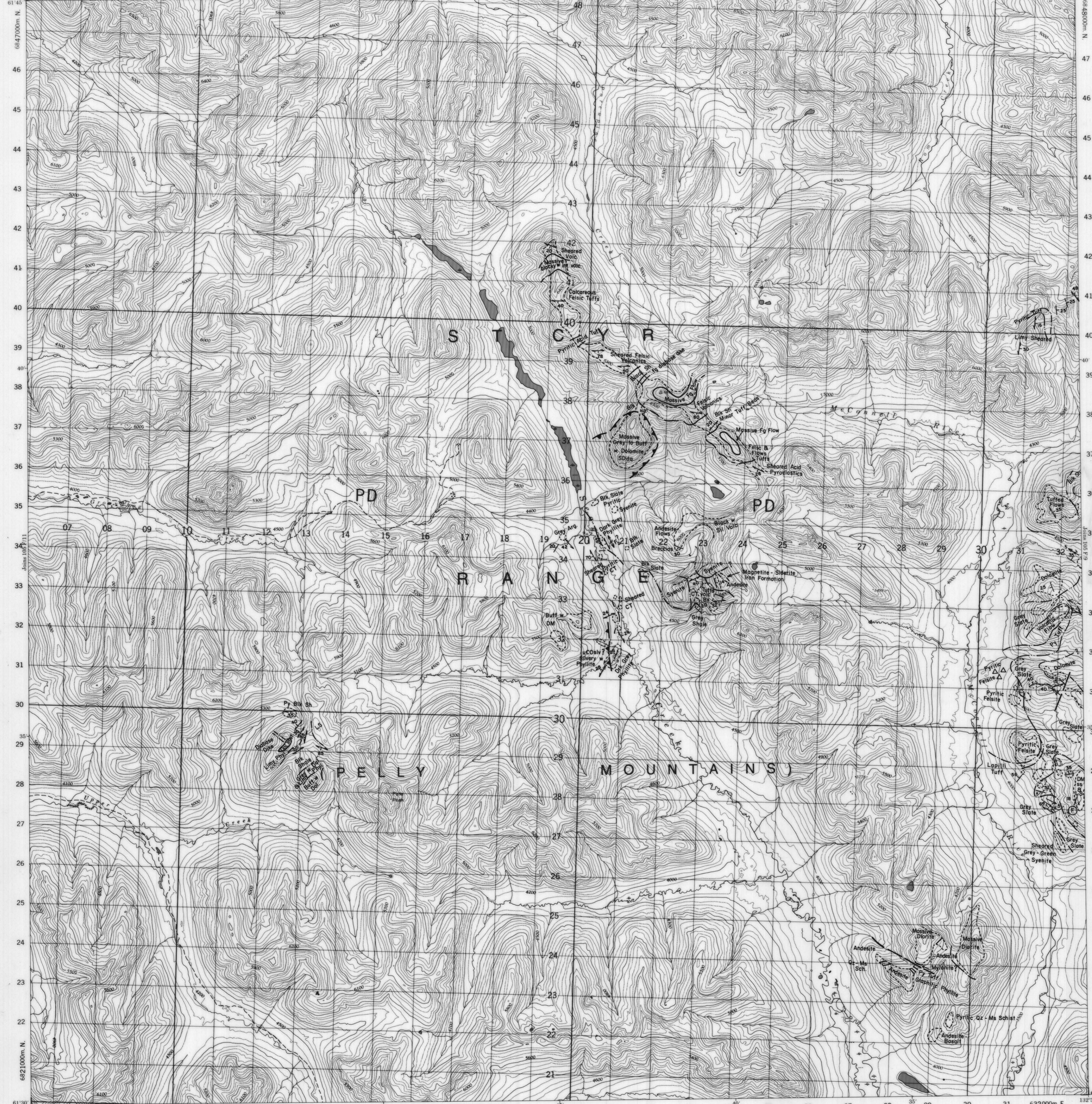
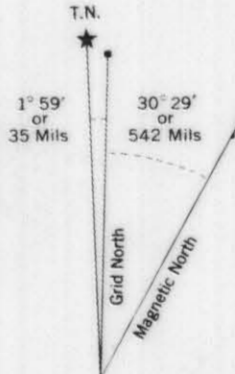
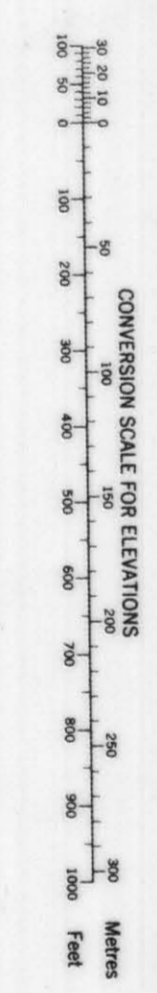


PROVISIONAL MAP 105 F/10 1:50,000 CANADA EDITION 1 105 F/10 CARTE PROVISOIRE 105 F/10



Refer to this map as: 105 F/10 EDITION 1 MCF SERIES A 722



ONE THOUSAND METRE UNIVERSAL TRANSVERSE MERCATOR GRID

EXAMPLE OF METHOD USED TO OBTAIN A REFERENCE TO NEAREST 100 METRES

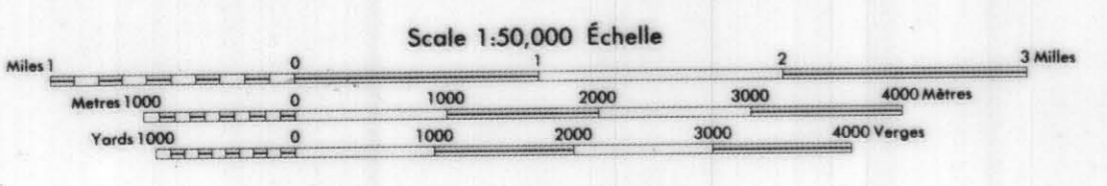
RESERVE POINT

ZONE 8

- LEGEND**
- BOUNDARY OF OUTCROP
 - GEOLOGIC CONTACT DEFINED, ASSUMED
 - BEDDING ATTITUDE
 - FOLIATION ATTITUDE
 - FAULT
 - THRUST FAULT
 - FOLD AXIS
 - FOSSIL LOCALITY

Copyright by the SURVEYS AND MAPPING BRANCH, DEPARTMENT OF ENERGY, MINES AND TECHNICAL SERVICES, CANADA.

ROADS: Capital Road, Old Road, Trail or Portage, Another by Portage

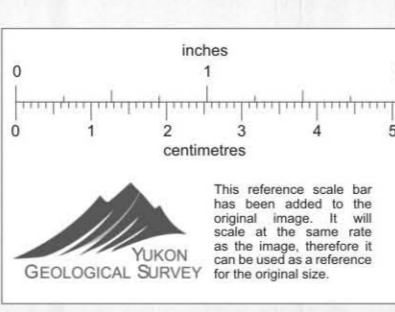


PASS PEAK YUKON TERRITORY

This Provisional Map is intended to be used as a guide only and is not to be used for legal purposes.

Cette carte provisoire est destinée à être utilisée comme guide et n'est pas destinée à être utilisée à des fins juridiques.

Mappe par la DIRECTION DES NIVEAUX DE LA CARTOGRAPHIE MINISTRE DE L'ENERGIE, DES MINES ET DES RESSOURCES TECHNIQUES DU CANADA.



105 F/10 EDITION 1

CYPRUS ANVIL MINING CORPORATION

PELLY PROJECT
REGIONAL GEOLOGY MAP: 105 F/10

REVISED: 010079

NTS: 105 F/10
DRAWN BY: C. L. C.
DATE: FEB. 25, 1978