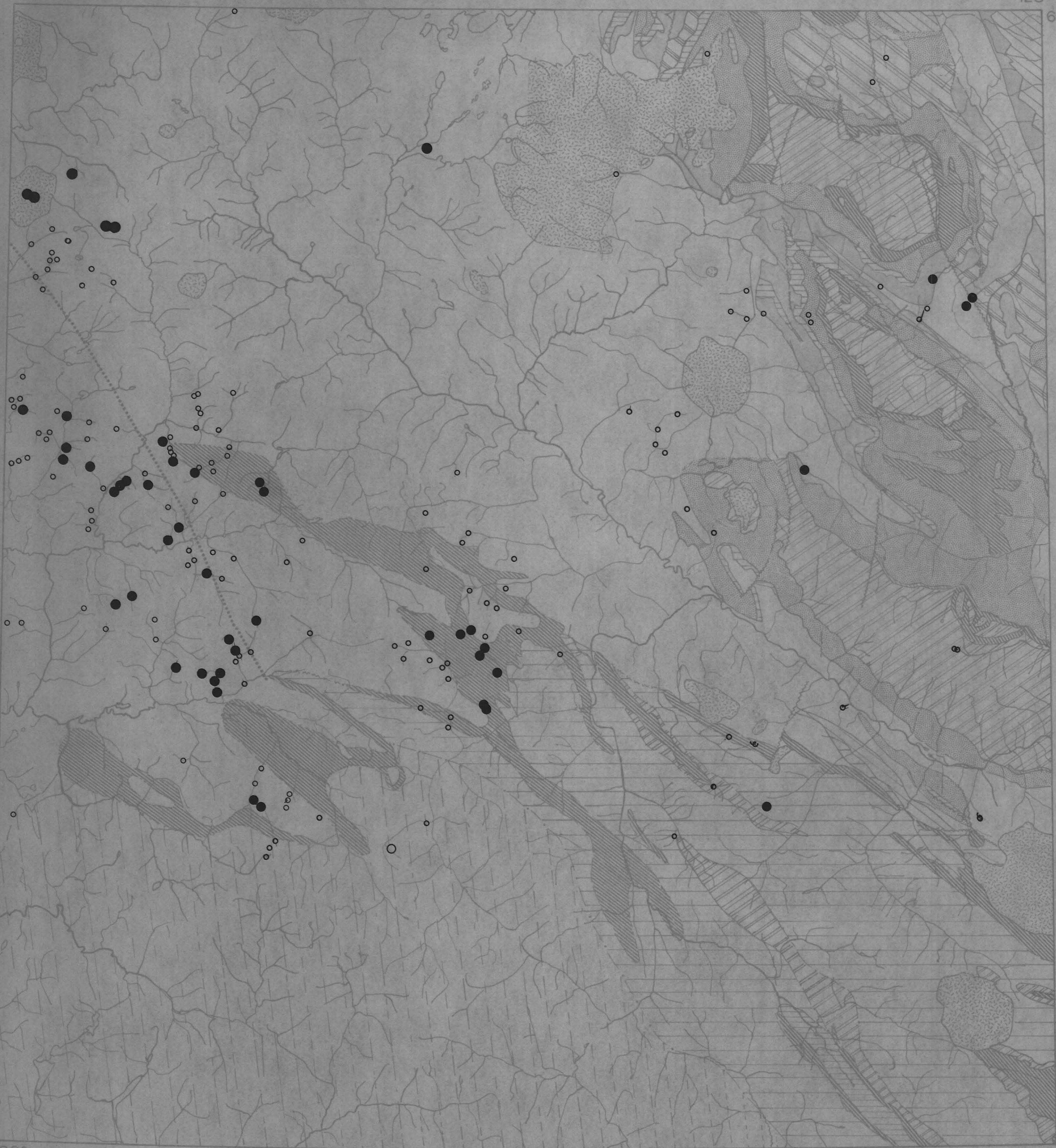


105 I

128° 63°



62° 130°

Scale 1: 253,440  
1 inch to 4 miles

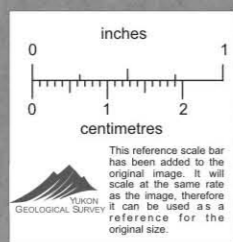
NAHANNI

(GEOLOGY AFTER BLUSSON  
G.S.C. 1962, 1966)

### ZINC DISTRIBUTION

- 1st priority
- 2nd priority

010132



Summary of Geochemical Sift  
Sampling Scheme Project  
105 I