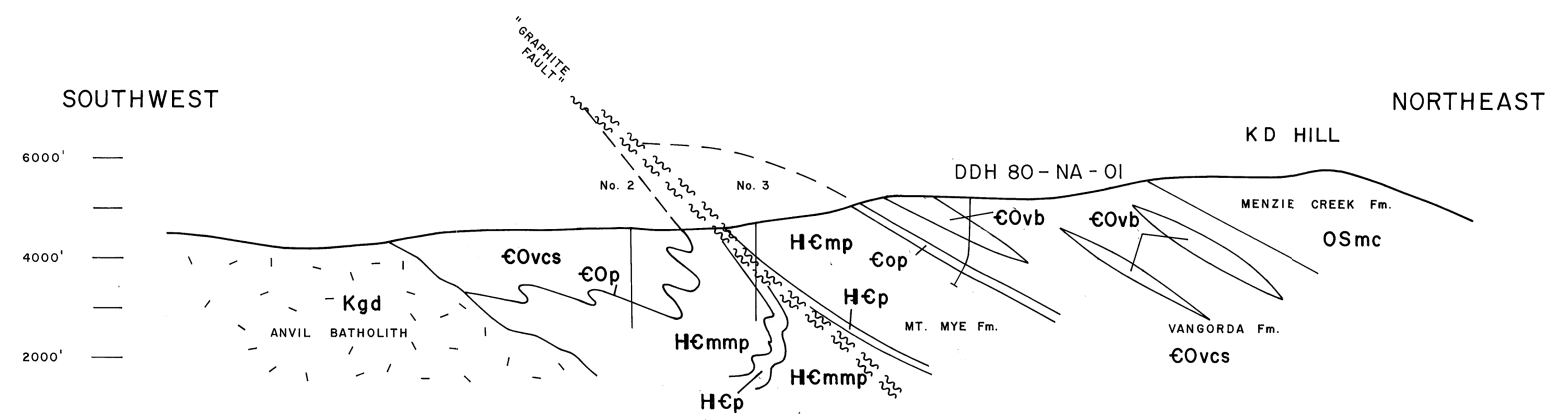
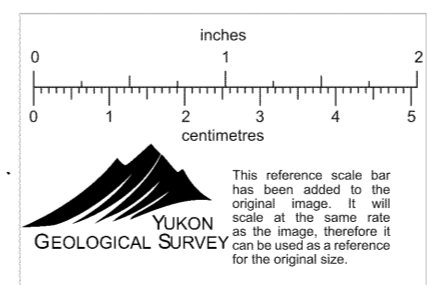


North Anvil Range, 1"=2000'
 SPECULATIVE SECTION
 1"=2000'



SPECULATIVE SECTION ALONG PROPOSED DRILL HOLE
 FENCE ACROSS THE NORTHWEST PART OF THE
 NORTH ANVIL J. V. CLAIMS AREA

HORIZ = VERT. SCALE 1" = 2000'



CYPRUS ANVIL MINING CORPORATION	
NORTH ANVIL RANGE	
GEOLOGY 010220	
SPECULATIVE SECTION	
N.T.S. 105K-6, 11	SCALE: 1" = 2000'
SURVEY BY:	DATE: JANUARY 25, 1980
DRAWN BY: C. L. CORY	SHEET ___ of ___