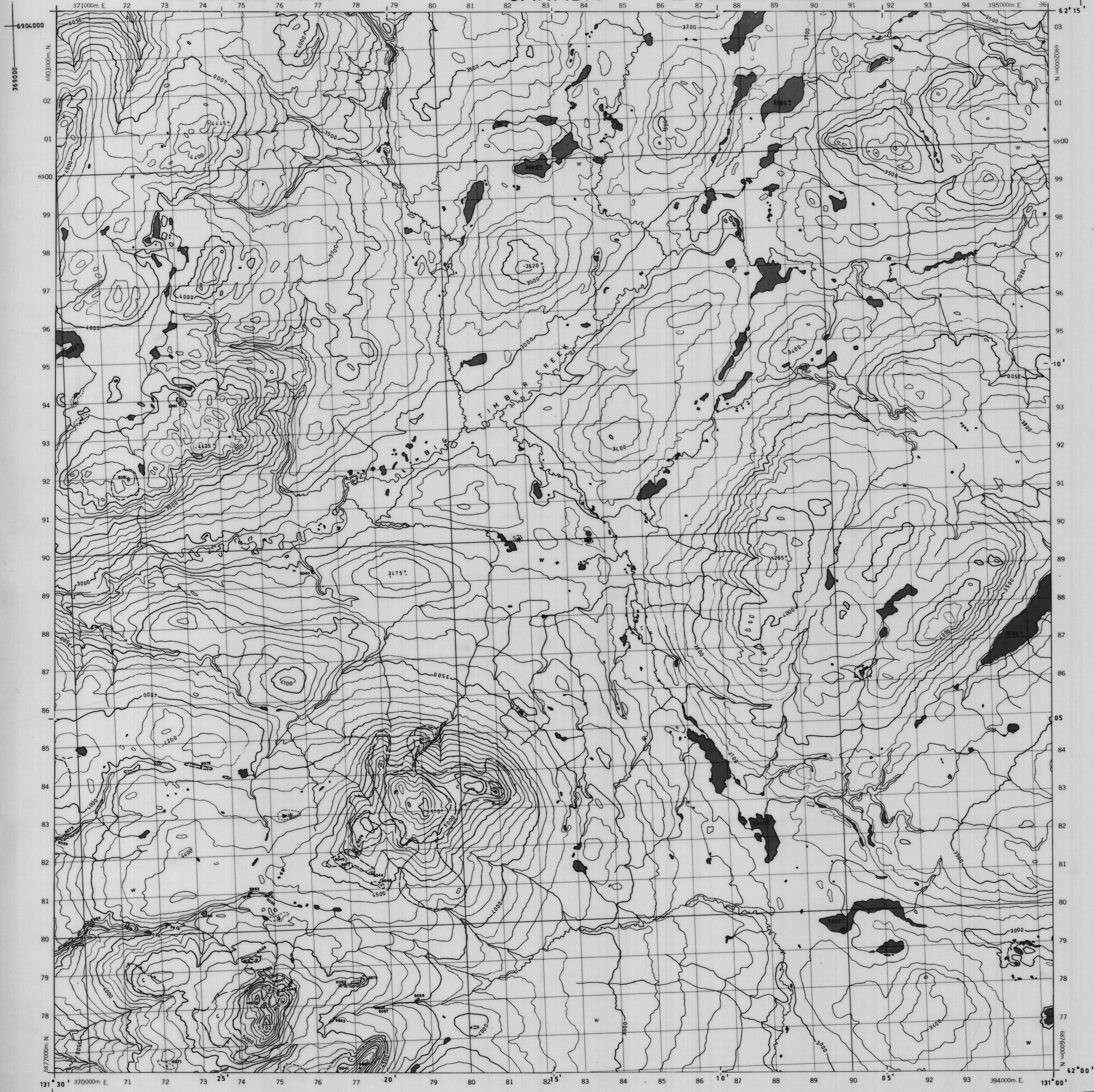


ADVANCE PRINT

CANADA

ÉPREUVE PRÉLIMINAIRE

105 J/3



PRODUCED BY SURVEYS AND MAPPING BRANCH,
 DEPARTMENT OF ENERGY, MINES AND RESOURCES,
 OTTAWA, 1971, FROM PHOTOGRAPHS TAKEN IN 1969.

YUKON TERRITORY

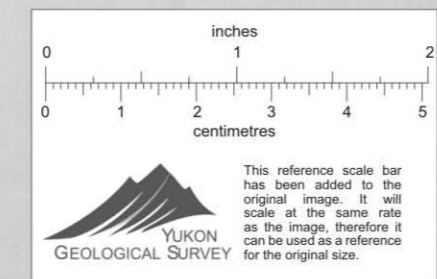
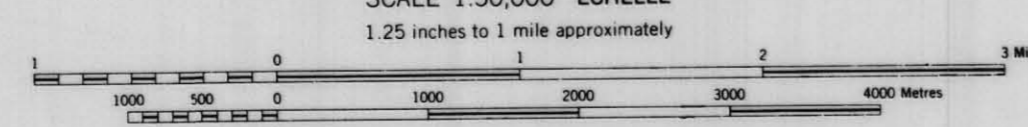
ÉTABLI PAR LA DIRECTION DES LÉVÉS ET DE LA
 CARTOGRAPHIE, MINISTÈRE DE L'ÉNERGIE, DES
 MINES ET DES RESSOURCES, OTTAWA, EN 1971.
 D'APRÈS DES PHOTOGRAPHIES PRISES EN 1969.

6875000

CONTOUR INTERVAL 100 FEET

SCALE 1:50,000 ÉCHELLE
 1.25 inches to 1 mile approximately

ÉQUIDISTANCE DES COURBES 100 PIEDS



CYPRUS ANVIL MINING CORPORATION	
STA NO.	010230
REVISED:	NTS: 105-J-3
	DRAWN BY: clc / rwr
	DATE: