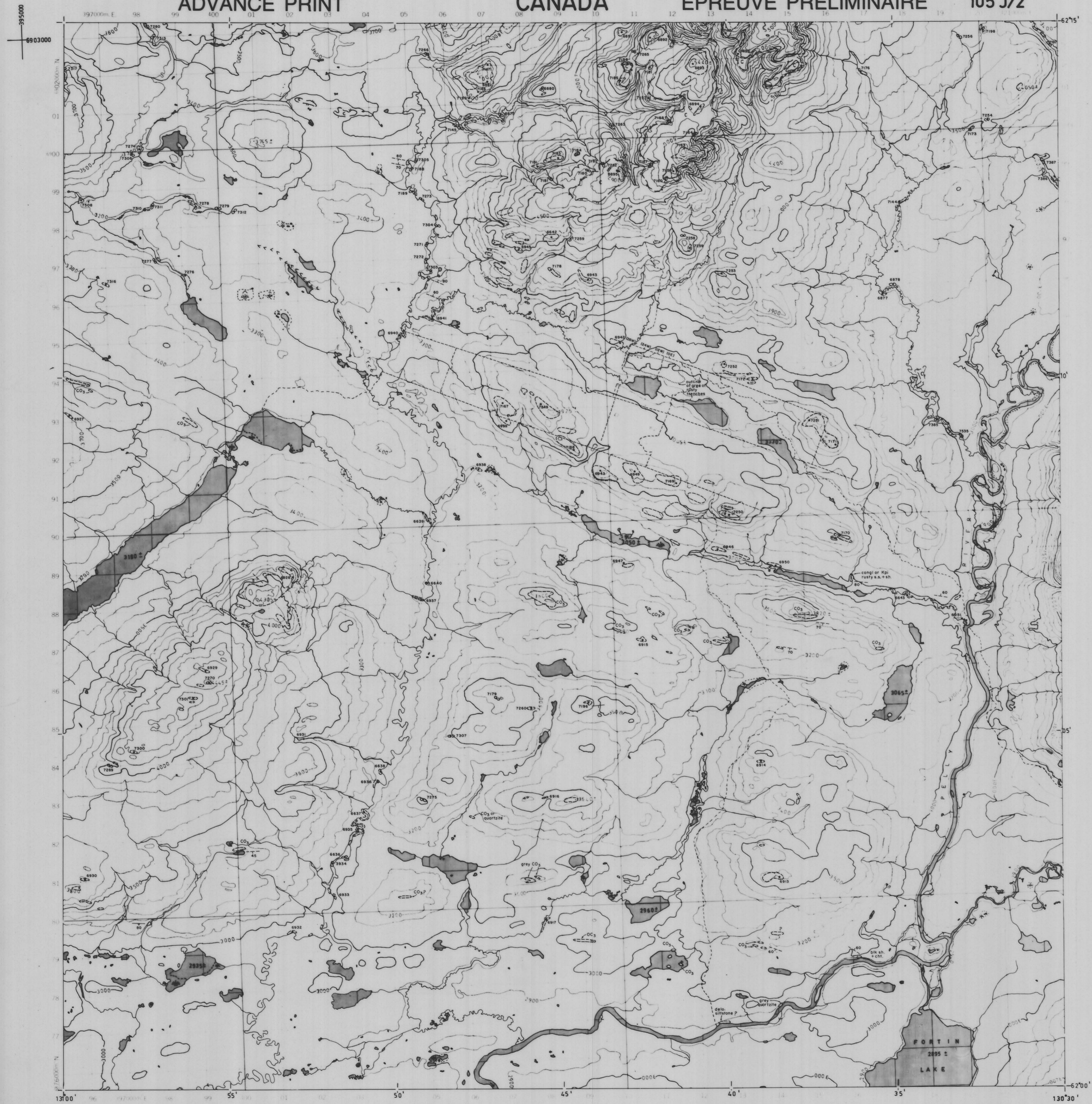


ADVANCE PRINT

CANADA

ÉPREUVE PRELIMINAIRE

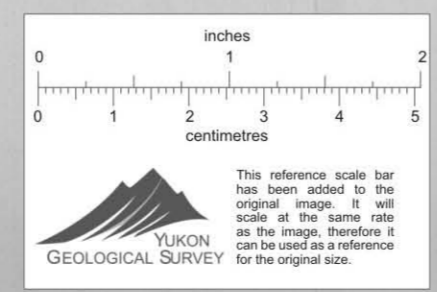
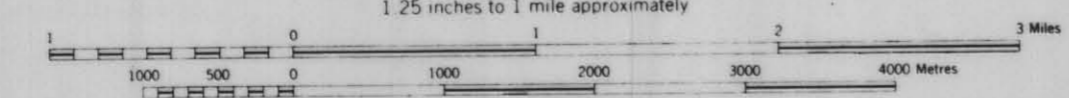
105 J/2



PRODUCED BY SURVEYS AND MAPPING BRANCH,  
DEPARTMENT OF ENERGY, MINES AND RESOURCES,  
OTTAWA, 1971, FROM PHOTOGRAPHS TAKEN IN 1948.  
CONTOUR INTERVAL 100 FEET

YUKON TERRITORY

SCALE 1:50,000 ÉCHELLE  
1.25 inches to 1 mile approximately



ÉTABLIE PAR LA DIRECTION DES LEVES ET DE LA  
CARTOGRAPHIE, MINISTÈRE DE L'ÉNERGIE, DES  
MINES ET DES RESSOURCES, OTTAWA, EN 1971,  
D'APRÈS DES PHOTOGRAPHIES PRISES EN 1948.  
ÉQUIDISTANCE DES COURBES 100 PIEDS

CYPRUS ANVIL MINING CORPORATION

010231

REVISED:

NTS: 105-J-2  
DRAWN BY: EDCCO LTD.  
DATE: MARCH, 1980