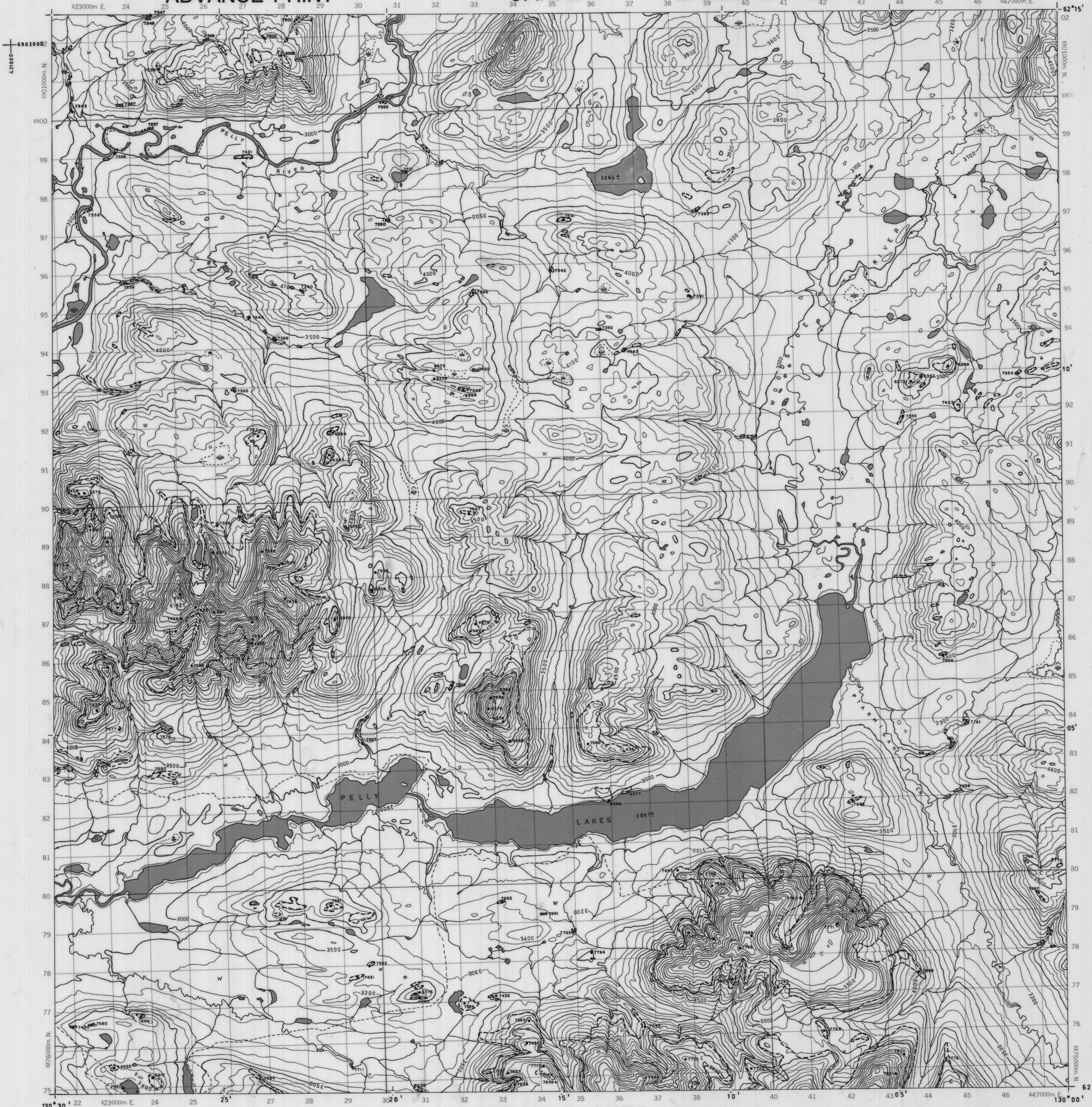


ADVANCE PRINT

CANADA

ÉPREUVE PRÉLIMINAIRE

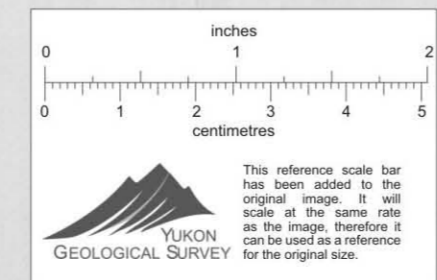
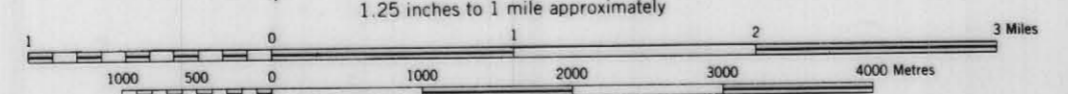
105 J/1



PRODUCED BY SURVEYS AND MAPPING BRANCH,  
DEPARTMENT OF ENERGY, MINES AND RESOURCES,  
OTTAWA, 1971. FROM PHOTOGRAPHS TAKEN IN 1968.  
CONTOUR INTERVAL 100 FEET

**PELLY LAKES**  
YUKON TERRITORY

SCALE 1:50,000 ÉCHELLE  
1.25 inches to 1 mile approximately



ÉTABLIE PAR LA DIRECTION DES LEVÉS ET DE LA  
CARTOGRAPHIE, MINISTÈRE DE L'ÉNERGIE, DES  
MINES ET DES RESSOURCES, OTTAWA, EN 1971,  
D'APRÈS DES PHOTOGRAPHIES PRISES EN 1968.  
ÉQUIDISTANCE DES COURBES 100 PIEDS

CYPRUS ANVIL MINING CORPORATION	
ANMAC PROJECT	
YUKON TERRITORY	
GEOLOGICAL MAP	
	010232
NTS 105-J-1 SURVEY BY: DRAWN BY:	DATE: