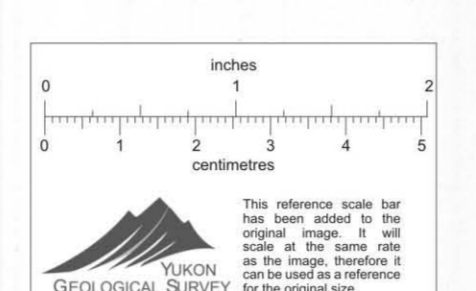
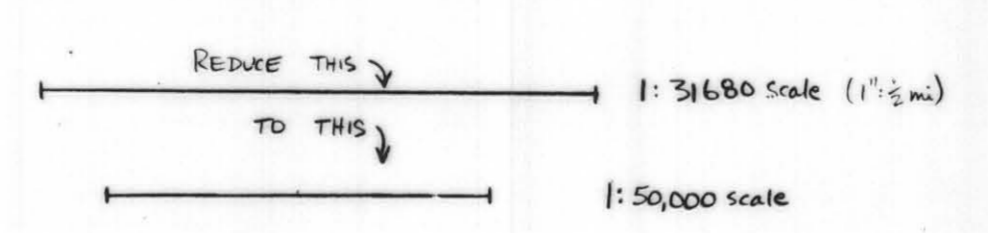


NOTICE

THIS MAP IS ISSUED AS A PRELIMINARY GUIDE FOR WHICH THE DEPARTMENT OF MINING AFFAIRS AND TECHNICAL SURVEYS WILL ACCEPT NO RESPONSIBILITY FOR ANY ERRORS OR INACCURACIES OR OMISSIONS WHATSOEVER.



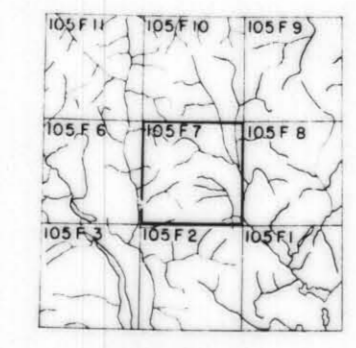
SHEET 105F-7

LATITUDE 61° 15' TO 61° 30' LONGITUDE 132° 30' TO 133° 00'

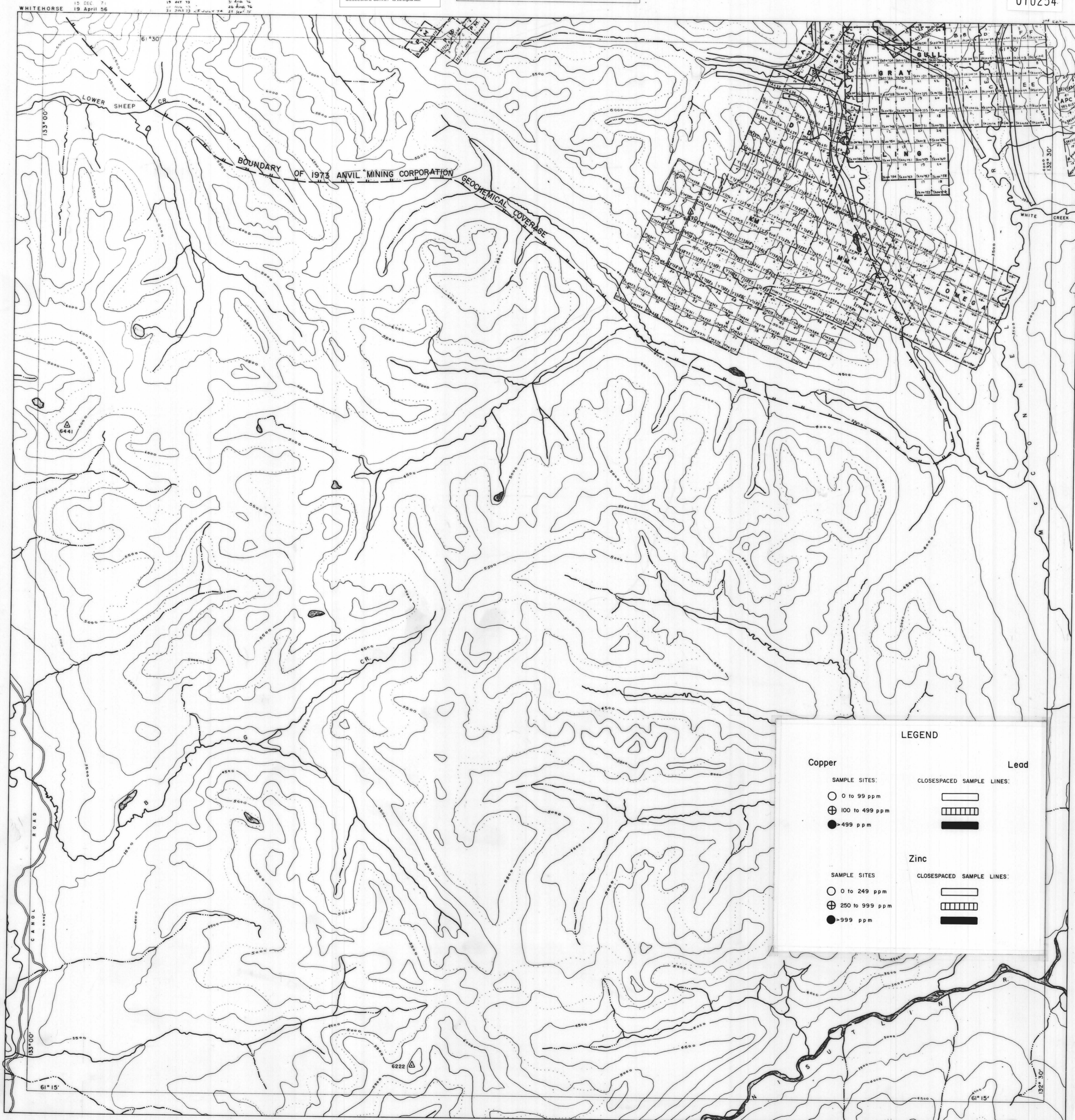
CANADA DEPARTMENT OF MINING AFFAIRS AND NATIONAL RESOURCES NORTHERN ADMINISTRATION AND LANDS BRANCH LANDS DIVISION

SCALE: 1 CM TO 1 INCH

ISSUED UNDER THE AUTHORITY OF THE MINISTER OF MINING AFFAIRS AND NATIONAL RESOURCES



010254



LEGEND

Copper	Lead
SAMPLE SITES:	CLOSESPACED SAMPLE LINES:
○ 0 to 99 ppm	▬
⊕ 100 to 499 ppm	▬▬▬▬▬▬
● >499 ppm	▬▬▬▬▬▬▬▬▬▬▬▬
SAMPLE SITES:	CLOSESPACED SAMPLE LINES:
○ 0 to 249 ppm	▬
⊕ 250 to 999 ppm	▬▬▬▬▬▬
● >999 ppm	▬▬▬▬▬▬▬▬▬▬▬▬