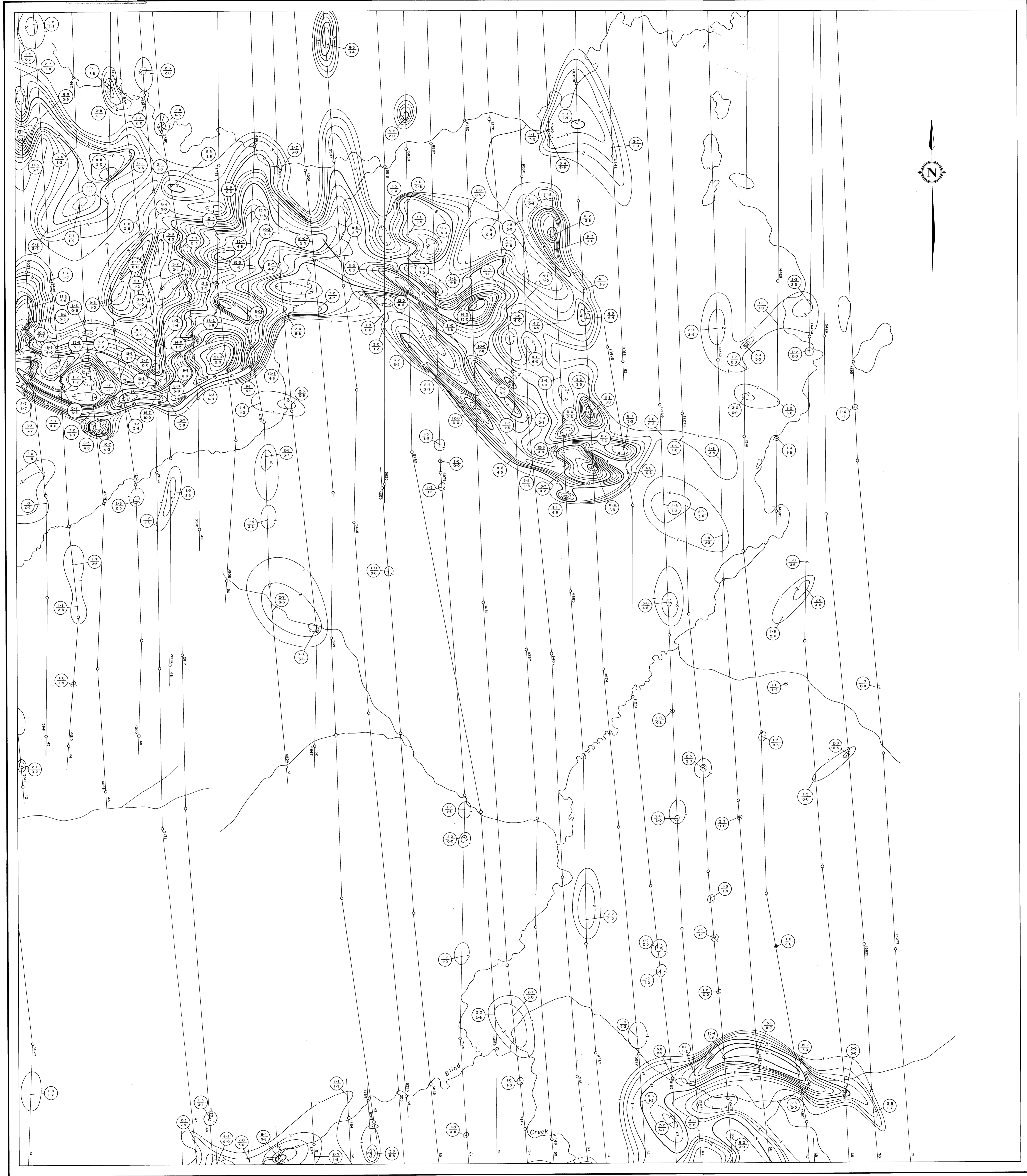


DYNASTY EXPLORATION LIMITED AIRBORNE ELECTROMAGNETIC SURVEY

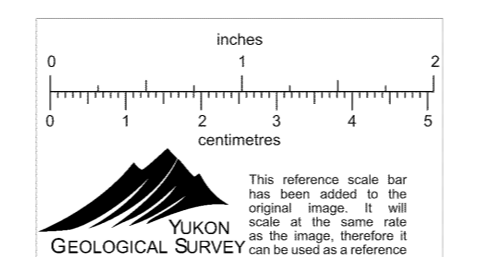
BLIND Airborne 1/4 mile
CREEK ELECTROMAGNETIC D3



MEAN FLIGHT LINE SPACING 1000 FEET
 MEAN TERRAIN CLEARANCE 200 FEET
 ELECTROMAGNETIC CONTOURS 5, 10, 15 etc.
 1, 2, 3, 4 etc.
 FIDUCIAL POINTS 3690
 FLIGHT LINES
 The contours represent amplitude of in phase response of the
 resultant field expressed in parts per million of the primary
 in phase component
 The figures (2.2) represent amplitude in phase component
 quadrature component
 The frequency of the primary current is 4000 cycles per second.

**BLIND CREEK AREA
YUKON TERRITORY**

SCALE
 1000 0 1000 2000 3000 4000 5000
 FEET
 1 inch to 1320 Feet



Flown and Compiled
 by
LOCKWOOD SURVEY CORPORATION LIMITED
 TORONTO, CANADA
 1965

010321

ELX - 74

