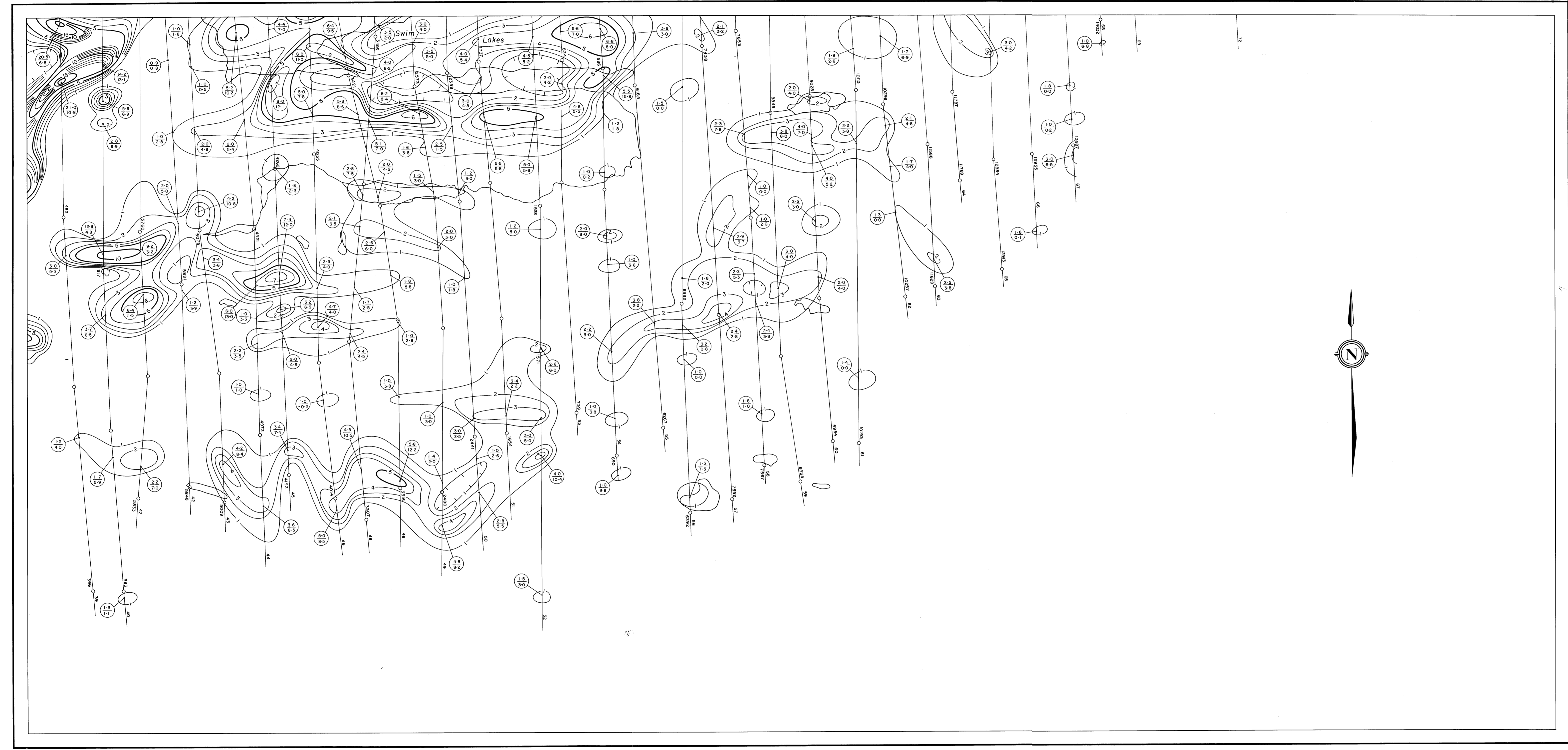


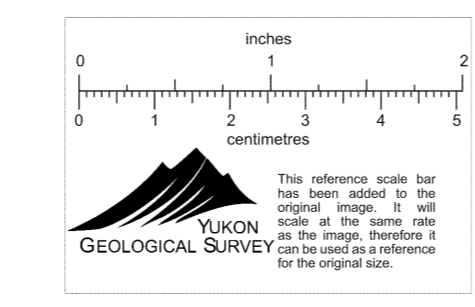
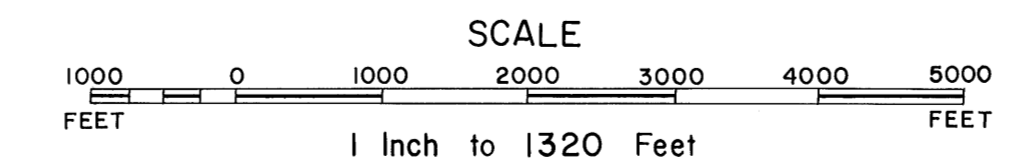
DYNASTY EXPLORATION LIMITED AIRBORNE ELECTROMAGNETIC SURVEY



MEAN FLIGHT LINE SPACING ----- 1000 FEET
 MEAN TERRAIN CLEARANCE ----- 200 FEET
 ELECTROMAGNETIC CONTOURS 5, 10, 15 etc. -----
 1, 2, 3, 4 etc. -----
 FIDUCIAL POINTS ----- O 3690
 FLIGHT LINES -----

The contours represent amplitude of in phase response of the resultant field expressed in parts per million of the primary magnetic field.
 The figures $\frac{a}{b}$ represent amplitude in phase component over quadrature component.
 The frequency of the primary current is 4000 cycles per second.

BLIND CREEK AREA YUKON TERRITORY



Flown and Compiled by
 LOCKWOOD SURVEY CORPORATION LIMITED
 TORONTO, CANADA
 1965

010325
 ELX-78

