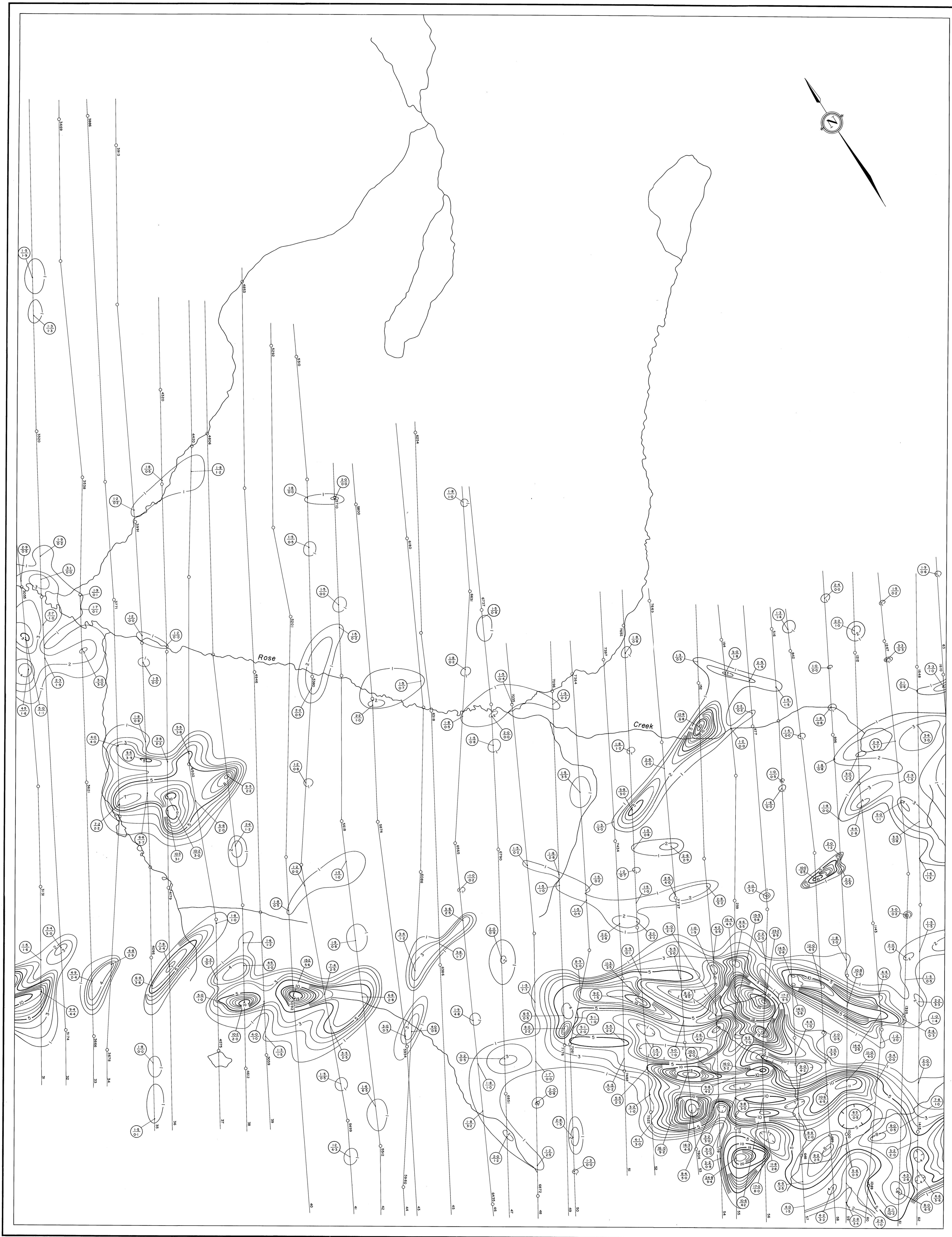


# DYNASTY EXPLORATION LIMITED

## AIRBORNE ELECTROMAGNETIC SURVEY

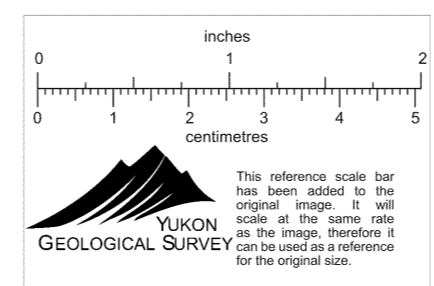


MEAN FLIGHT LINE SPACING ..... 1000 FEET  
 MEAN TERRAIN CLEARANCE ..... 500 FEET  
 ELECTROMAGNETIC CONTOURS 5, 10, 15 etc. .... 500 FEET  
 1, 2, 3, 4 etc. .... 100 FEET  
 FIDUCIAL POINTS ..... 0.500  
 FLIGHT LINES ..... 0.500

The contours represent amplitude of in phase response of the resultant field expressed in parts per million of the primary.  
 The figures (5, 10, 15 etc.) represent amplitude in phase component quadrature component.  
 The frequency of the primary current is 4000 cycles per second.

### ROSE CREEK AREA YUKON TERRITORY

SCALE  
 0 1000 2000 3000 4000 5000  
 FEET  
 1 Inch to 1320 Feet



Flown and Compiled  
 by  
 LOCKWOOD SURVEY CORPORATION LIMITED  
 TORONTO, CANADA  
 1965

ELX-84  
 010364

