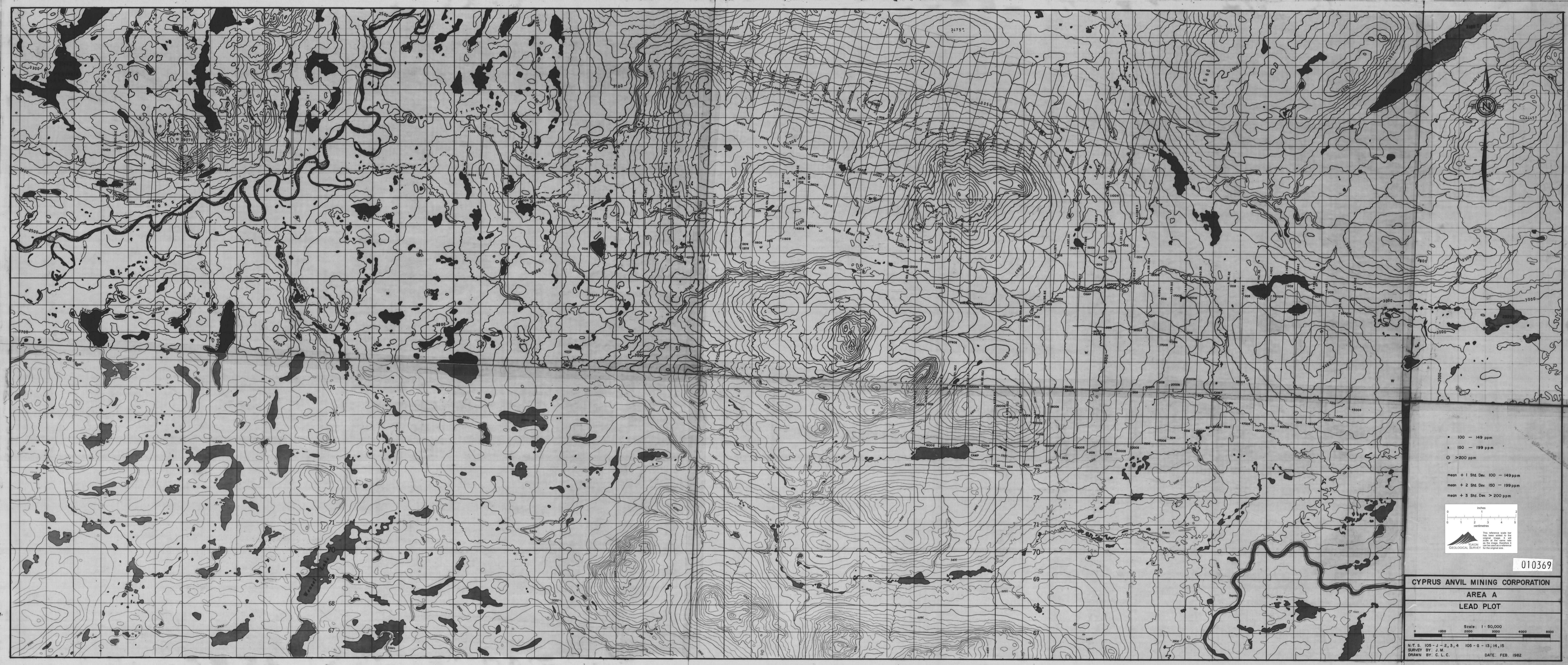
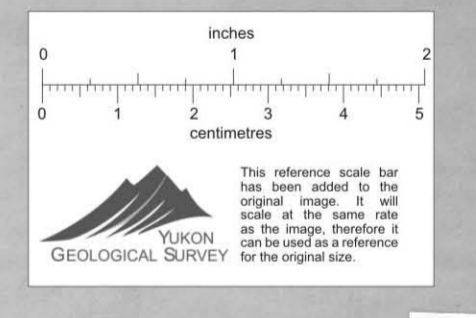


MAP AREA A
105-J 2,3,4
105-g 15,14,15
Scale 1:50,000
LEAD

HF 6-224



• 100 - 149 ppm
x 150 - 199 ppm
○ >200 ppm
mean + 1 Std. Dev. 100 - 149 ppm
mean + 2 Std. Dev. 150 - 199 ppm
mean + 3 Std. Dev. > 200 ppm



010369

CYPRUS ANVIL MINING CORPORATION
AREA A
LEAD PLOT

Scale 1:50,000
0 1000 2000 4000 8000
S.T.S. 105-J-2,3,4 105-G-15,14,15
SURVEY BY J.W.
DRAWN BY C.L.C. DATE FEB. 1962