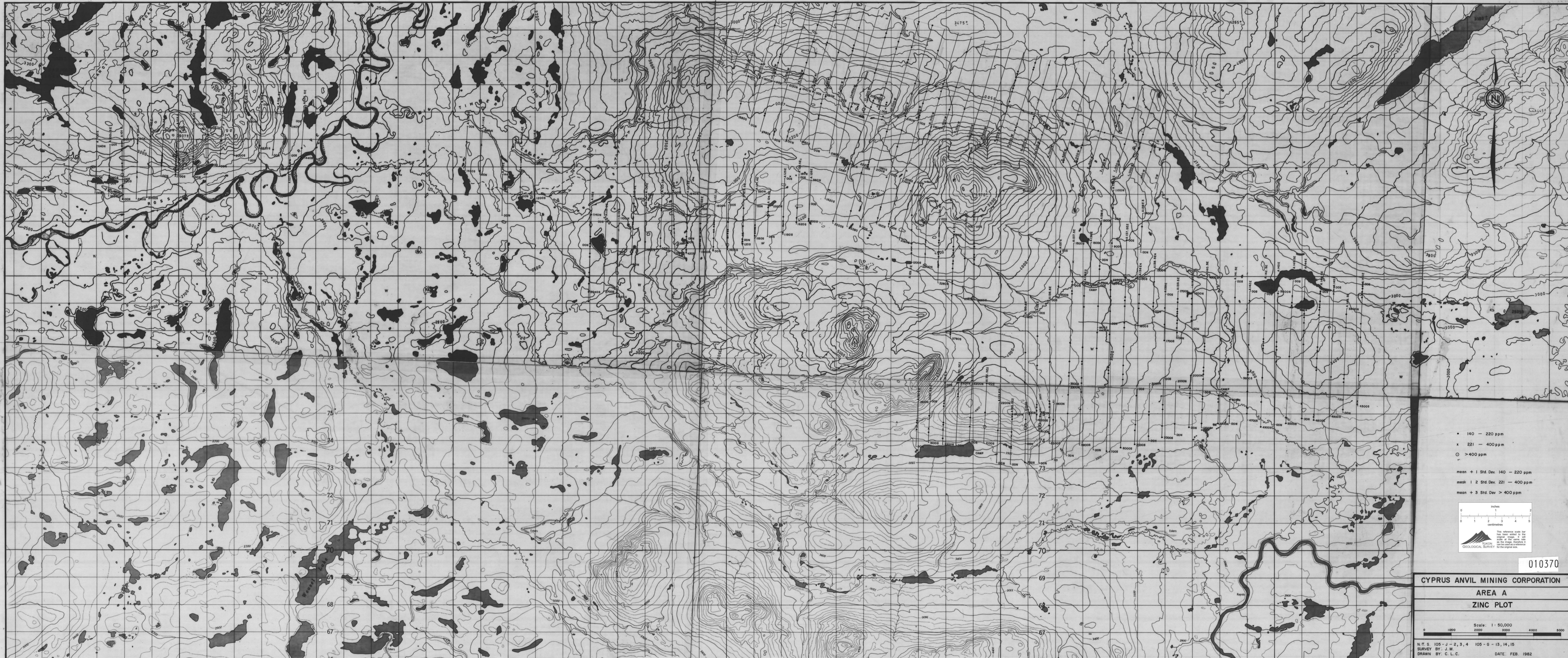
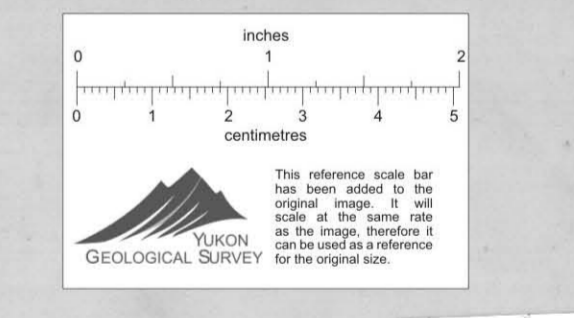


Map Area A  
105-J-2, 3, 4  
105-F-13, 14, 15  
Scale: 1" = 50,000  
Date: 1982

HF 6-225



- 140 - 220 ppm
  - x 221 - 400 ppm
  - > 400 ppm
- mass # 1 S&E Div 140 - 220 ppm  
mass # 2 S&E Div 221 - 400 ppm  
mass # 3 S&E Div > 400 ppm



010370

CYPRUS ANVIL MINING CORPORATION  
AREA A  
ZINC PLOT

Scale: 1" = 50,000

N.T.S. 105-J-2, 3, 4 105-F-13, 14, 15  
SURVEY BY: J.M.  
DRAWN BY: C.L.C. DATE: FEB 1982