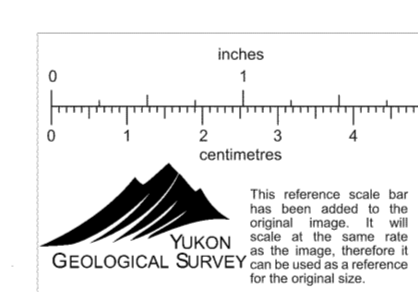
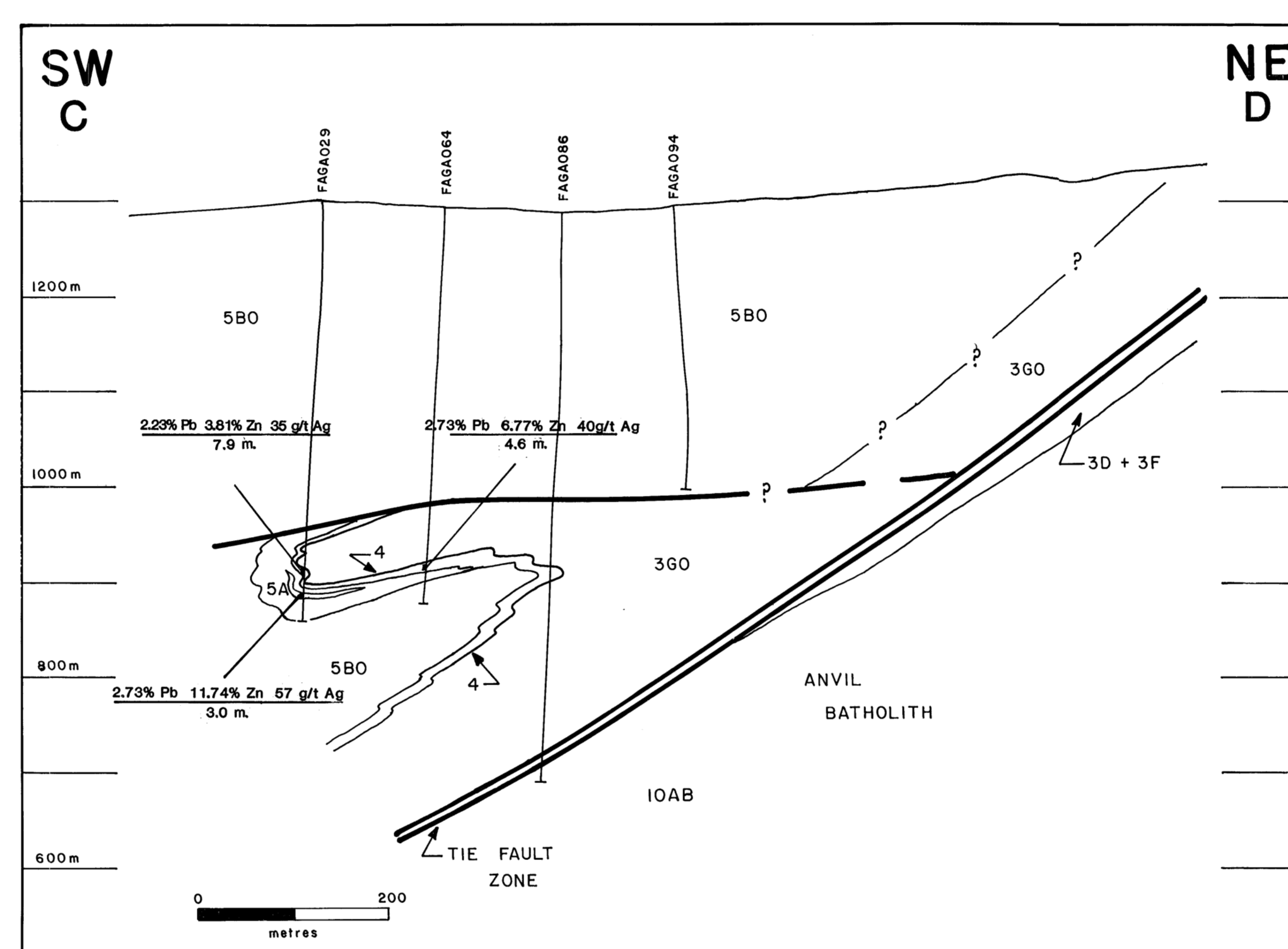
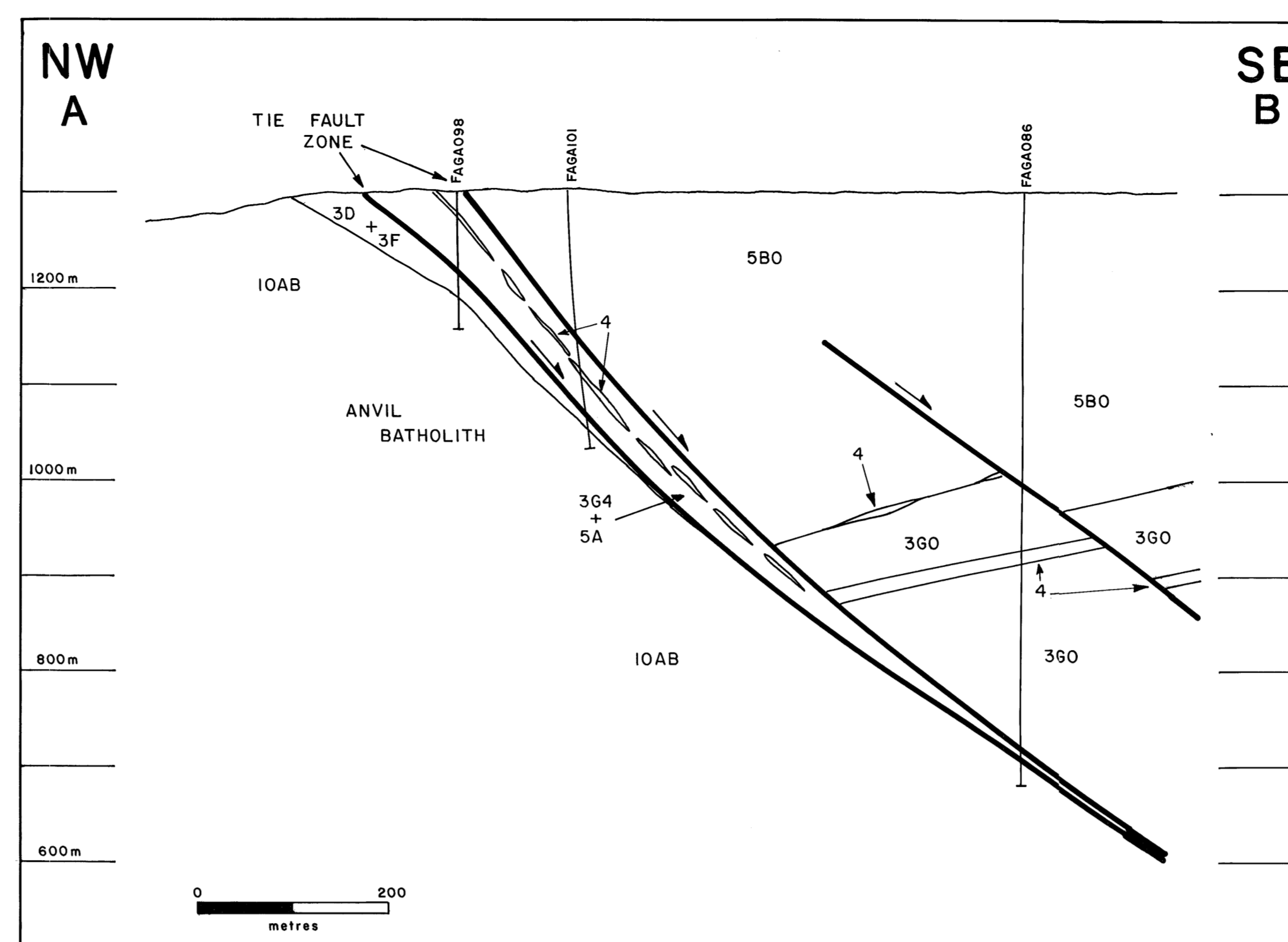


010390



LEGEND FOR PLATES I AND II

- ANVIL BATHOLITH - mylonitic border phase**
- 10AB** granodiorite - quartz monzonite
- VANGORDA FORMATION**
- 5A** graphitic phyllite
- 5B0** medium grey calcareous phyllite
- 5B6** medium grey non-calcareous phyllite
- 5C** metabasite (amphibolite in Tie Fault Zone)
- 4** undifferentiated sulphide lithofacies
- MT. MYE FORMATION**
- 3D** calc-silicate
- 3F** marble
- 3G** biotite schist
- 3G0** medium grey non-calcareous phyllite  
(3G4 is an altered version of 3G0)
- 83-12 outcrop and station number
- contact
- fault ball on downthrown side
- ⊙ diamond drill hole } located in field
- ⊖ rotary drill hole } located in field
- diamond drill hole } not located in field
- ⊖ rotary drill hole } not located in field
- (12-54) overburden to 12 m., total depth of hole is 54 m.
- A—B line of section