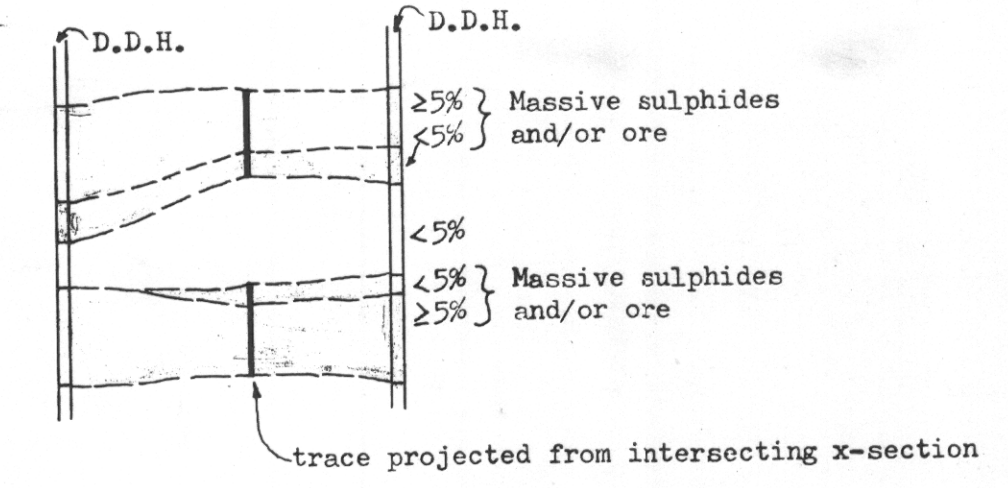
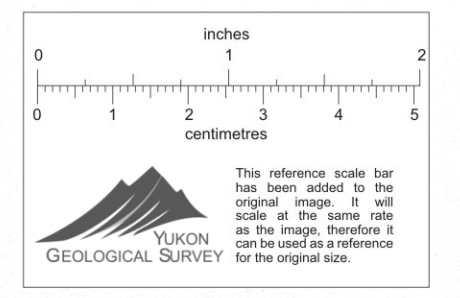


LOOKING N.E.

LEGEND:



	BY	DATE
Checked ①	_____	_____
Checked ②	_____	_____
Checked ③	_____	_____
Done ①	P.M.P.	'71
Done ②	P.M.P.	Oct '72
Done ③	_____	_____



ZONE # 3

ANVIL MINING CORP.

FARO, Y.T. 010439

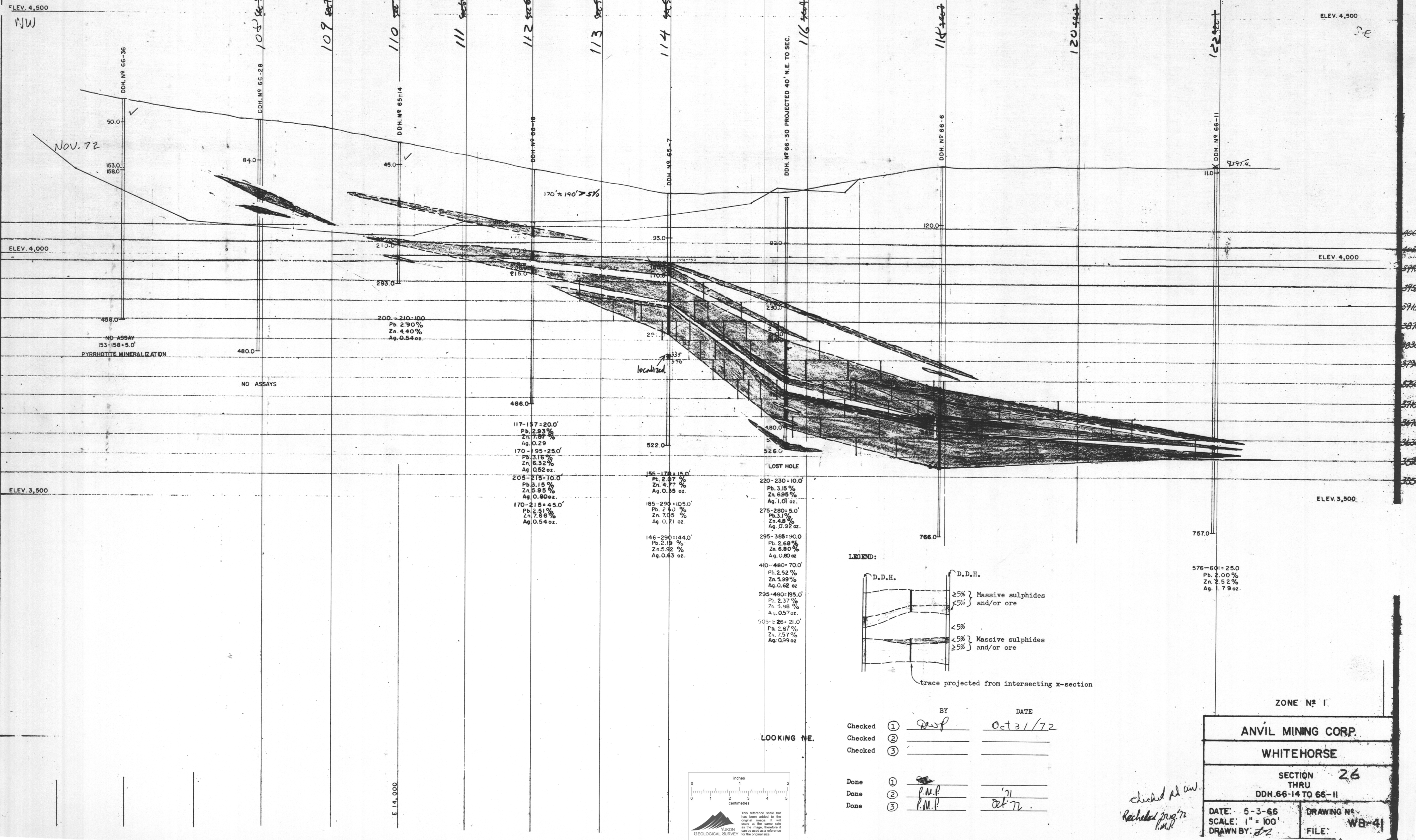
SECTION 116
DDH 71-3 TO DDH 65-5

DATE: MAY 1, 1972
SCALE: 1" = 100'
DRAWN BY: B.E.F.

DRAWING #
FB-7201

FILE #

Rechecked P.M.P. 30.10.72



FLEV. 4,500

ELEV. 4,500

ELEV. 4,000

ELEV. 4,000

ELEV. 3,500

ELEV. 3,500

NW

SE

NOV. 72

NO ASSAY
153-158 = 5.0'
PYRRHOTITE MINERALIZATION

NO ASSAYS

200-210-100
Pb. 2.90%
Zn. 4.40%
Ag. 0.54 oz.

117-137 = 20.0'
Pb. 2.93%
Zn. 7.97%
Ag. 0.29

170-195 = 25.0'
Pb. 3.15%
Zn. 6.32%
Ag. 0.52 oz.

205-215 = 10.0'
Pb. 3.15%
Zn. 5.95%
Ag. 0.80 oz.

170-215 = 45.0'
Pb. 2.31%
Zn. 7.86%
Ag. 0.54 oz.

localized

146-290 = 144.0'
Pb. 2.19%
Zn. 5.32%
Ag. 0.63 oz.

155-170 = 15.0'
Pb. 2.07%
Zn. 4.77%
Ag. 0.35 oz.

185-290 = 105.0'
Pb. 2.43%
Zn. 7.05%
Ag. 0.71 oz.

LOST HOLE

220-230 = 10.0'
Pb. 3.15%
Zn. 6.95%
Ag. 1.01 oz.

275-280 = 5.0'
Pb. 3.19%
Zn. 4.8%
Ag. 0.92 oz.

295-385 = 90.0'
Pb. 2.68%
Zn. 6.80%
Ag. 0.80 oz.

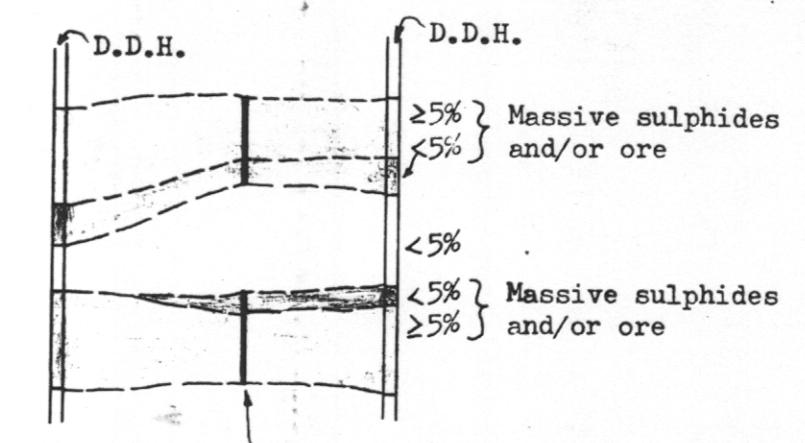
410-480 = 70.0'
Pb. 2.52%
Zn. 5.99%
Ag. 0.62 oz.

295-490 = 195.0'
Pb. 2.37%
Zn. 5.98%
Ag. 0.57 oz.

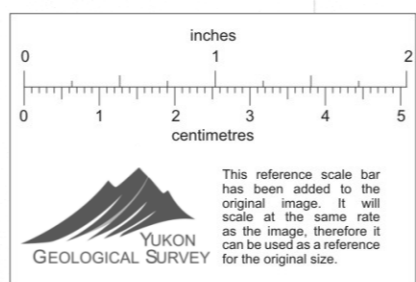
505-526 = 21.0'
Pb. 2.87%
Zn. 7.57%
Ag. 0.99 oz.

576-601 = 25.0'
Pb. 2.00%
Zn. 2.52%
Ag. 1.79 oz.

LEGEND:



LOOKING NE.

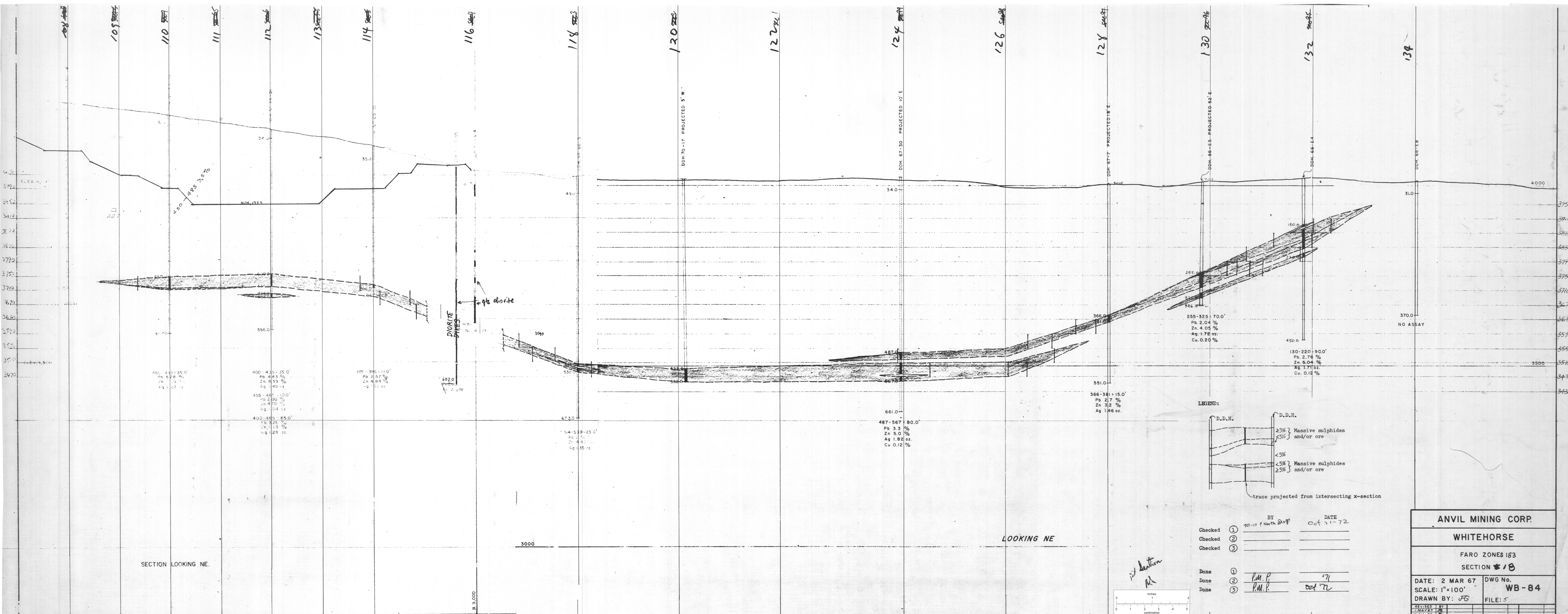


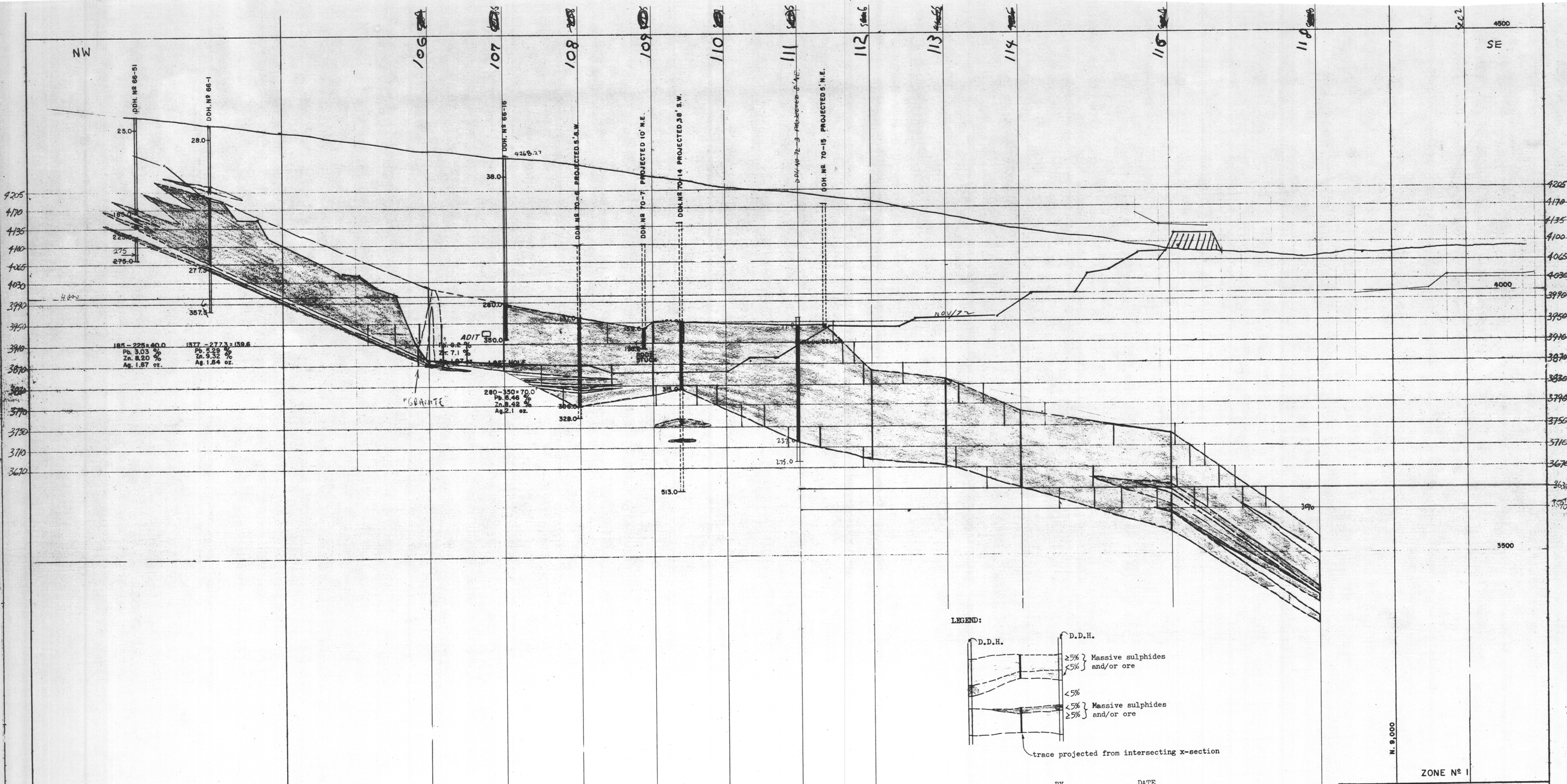
	BY	DATE
Checked ①	<i>[Signature]</i>	Oct 31/72
Checked ②		
Checked ③		
Done ①	<i>[Signature]</i>	
Done ②	P.M.P.	'72
Done ③	P.M.P.	Oct 72

*checked pl. civ.
Rechecked 20/12/72
P.M.P.*

ZONE N° 1.

ANVIL MINING CORP.	
WHITEHORSE	
SECTION	26
THRU	
DDH. 66-14 TO 66-11	
DATE: 5-3-66	DRAWING N°
SCALE: 1" = 100'	WB-41
DRAWN BY: <i>[Signature]</i>	FILE:





LOOKING NE.

	BY	DATE
Checked ①	_____	_____
Checked ②	_____	_____
Checked ③	_____	_____
Done ①	_____	_____
Done ②	_____	_____
Done ③	_____	_____

1" = 100'

0 1 2 3 4 5
inches
0 1 2 3 4 5
centimetres

YUKON
GEOLOGICAL SURVEY

3000

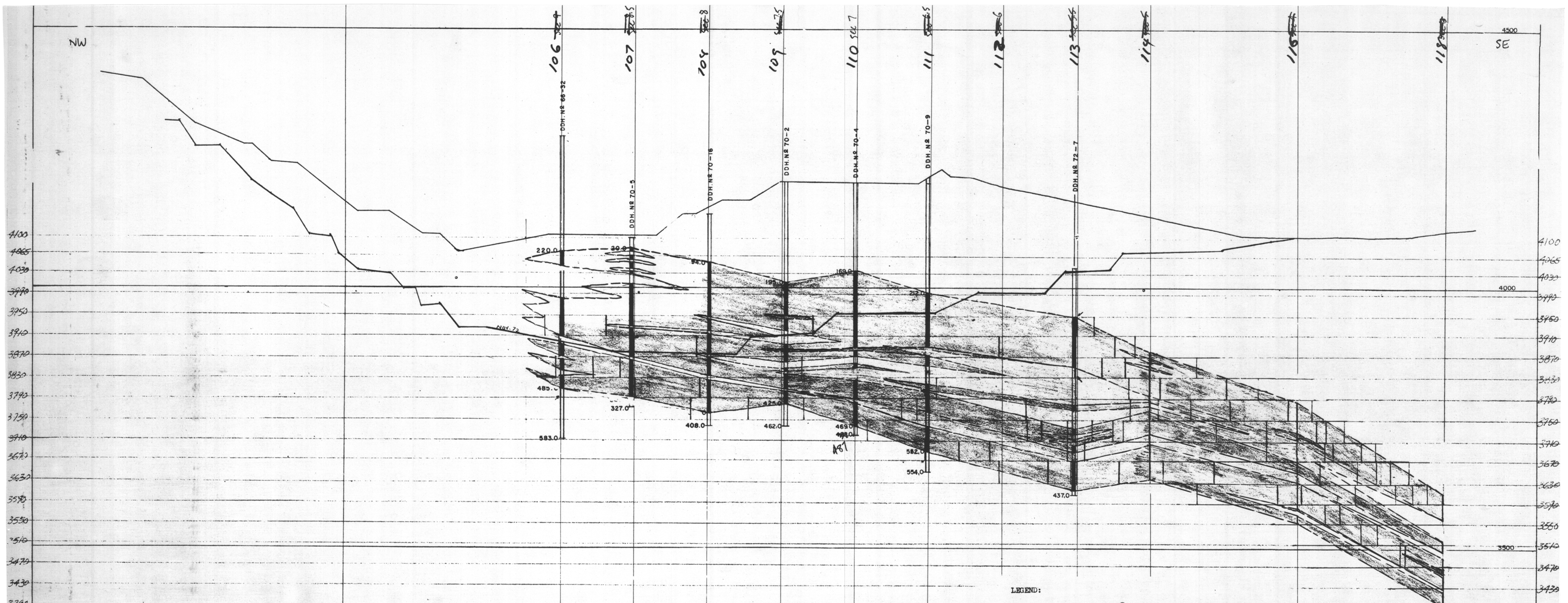
ZONE N° 1

ANVIL MINING CORP.

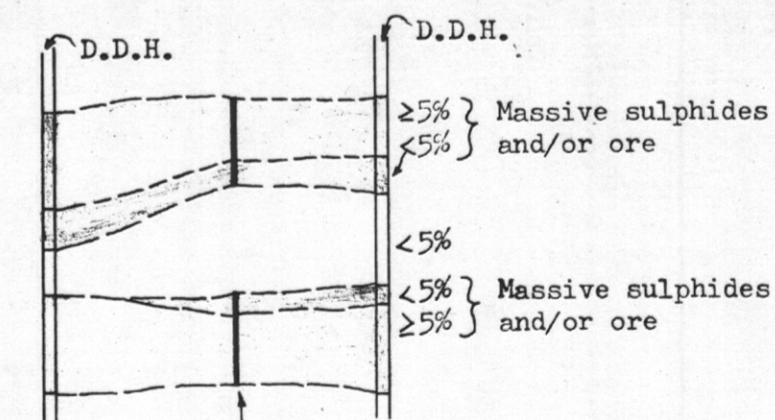
WHITEHORSE

SECTION **21**
THRU
DIAMOND DRILL HOLES 66-51 & 66-16

DATE: Oct. 11 / 66	DRAWING N°
SCALE: 1" = 100'	WB-65
DRAWN BY: <i>[Signature]</i>	FILE #

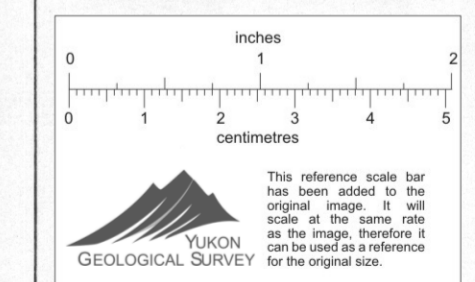


LEGEND:



as projected from intersecting x-section

	BY	DATE
Checked	① <i>Quip</i>	Oct 31/72
Checked	② <i>Swif</i>	Nov 2/72
Checked	③ _____	_____
Done	① _____	_____
Done	② _____	_____
Done	③ _____	_____



YUKON GEOLOGICAL SURVEY
 This reference scale bar has been added to the original image. It will scale at the same rate as the image, therefore it can be used as a reference for the original size.

ZONE No 1

ANVIL MINING CORP.	
FARO.	
SECTION 21 23 THRU	
DIAMOND DRILL HOLES 66-32870-516-2-4-9	
DATE: 20-3-70	DRAWING No
SCALE: 1" = 100'	FB-7004
DRAWN BY: <i>QCT</i>	FILE: 6

NOTE:
 REVISED JULY 20, 1972 *R.A.F.*

E. 13,000

E. 14,500

NW

106

107

108

109

110

111

112

113

114

116

120

ELEV. 4,500

ELEV. 4,000

ELEV. 3,500

ELEV. 3,430

DDH. NO. 66-38
DDH. NO. 70-10 PROJECTED 50' N.W.
DDH. NO. 66-41
DDH. NO. 70-8 PROJECTED 10' S.E.
DDH. NO. 66-39
DDH. NO. 66-9
DDH. NO. 66-35
DDH. NO. 72-6 PROJECTED 50' N.W.

Nov 172

95-100 = 50'
Pb 4.0%
Zn 7.1%
Ag 5.76 oz.

210-280 = 80.0'
Pb 3.49%
Zn 6.67%
Ag 0.52 oz.

110-115 = 5.0'
Pb 6.4%
Zn 7.1%
Ag 0.52 oz.

170-208 = 38.0'
Pb 3.1%
Zn 3.98%
Ag 0.204 oz.

315-320 = 5.0'
Pb 1.80%
Zn 3.80%
Ag 0.204 oz.

340-350 = 10.0'
Pb 2.40%
Zn 5.00%
Ag 0.388 oz.

200-205 = 5.0'
Pb 3.4%
Zn 2.5%
Ag 1.60 oz.

215-275 = 90.0'
Pb 3.36%
Zn 8.28%
Ag 7.56 oz.

200-275 = 75.0'
Pb 3.13%
Zn 7.01%
Ag 0.69 oz.

335-370 = 35.0'
Pb 2.71%
Zn 4.34%
Ag 1.95 oz.

236-300 = 64.0'
Pb 3.50%
Zn 7.70%
Ag 7.56 oz.

140-145 = 75.0'
Pb 3.10%
Zn 6.70%
Ag 1.77 oz.

236-415 = 170.0'
Pb 2.71%
Zn 5.8%
Ag 0.68 oz.

486.0'

130-140 = 10.0'
Pb 4.05%
Zn 6.60%
Ag 2.72 oz.

185-195 = 10.0'
Pb 3.55%
Zn 11.90%
Ag 1.00 oz.

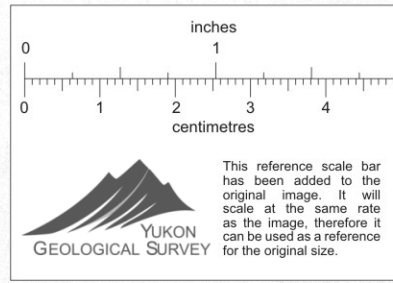
215-285 = 70.0'
Pb 3.77%
Zn 8.66%
Ag 0.52 oz.

295-360 = 65.0'
Pb 2.31%
Zn 6.84%
Ag 0.42 oz.

385-405 = 20.0'
Pb 2.38%
Zn 6.30%
Ag 0.83 oz.

215-405 = 190.0'
Pb 2.53%
Zn 6.35%
Ag 0.44 oz.

SECTION LOOKING N.E.



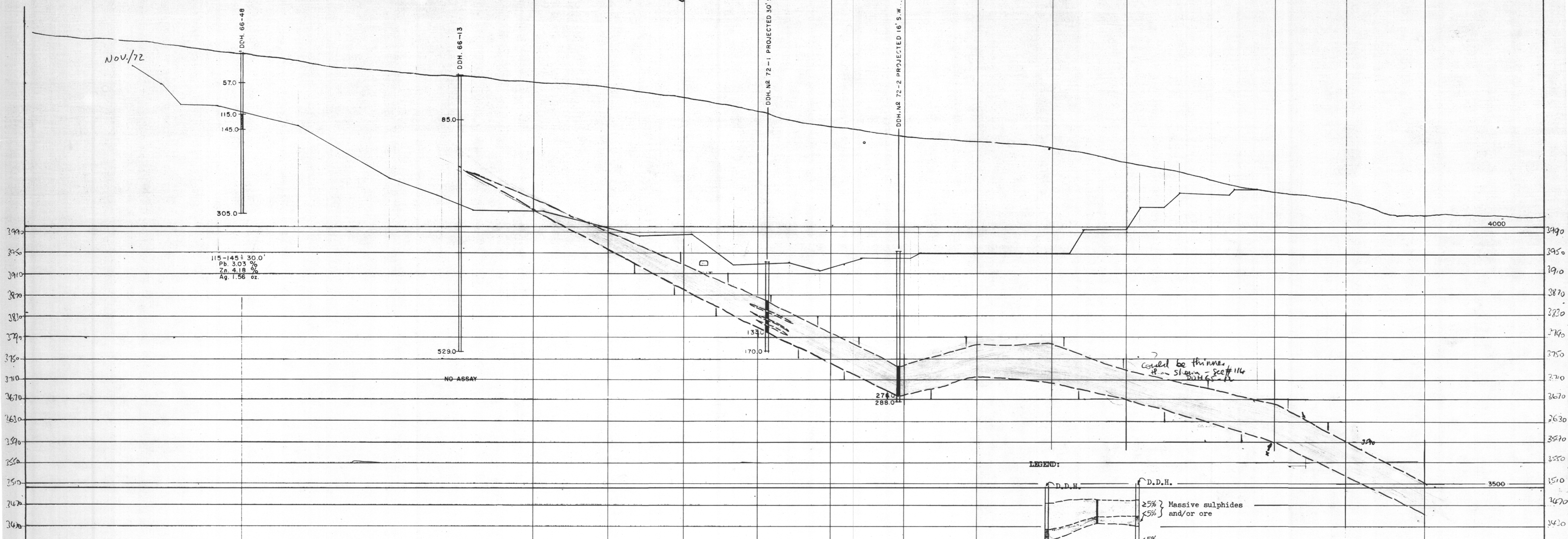
Note: REVISED MAY 3, 1972

ZONE N° 1
ANVIL MINING CORP.
WHITEHORSE
SECTION 25
THRU
DDH. 66-35, 66-9
DRAWING N° WB-46
FILE: 6

DATE: July 9 / 66
SCALE: 1" = 100'
BY: J.M.

Sec 14

171 2X



115-145 = 30.0'
 Pb. 3.03 %
 Zn. 4.18 %
 Ag. 1.56 oz.

SECTION LOOKING NE.

N. 10,500

N. 9,000

ANVIL MINING CORP.

WHITEHORSE

SECTION THRU 19

DDH. 66-48 & 66-13

DATE: Oct. 21 / 66

SCALE: 1" = 100'

BY: Jan

DRAWING N° WB-67

FILE: 6