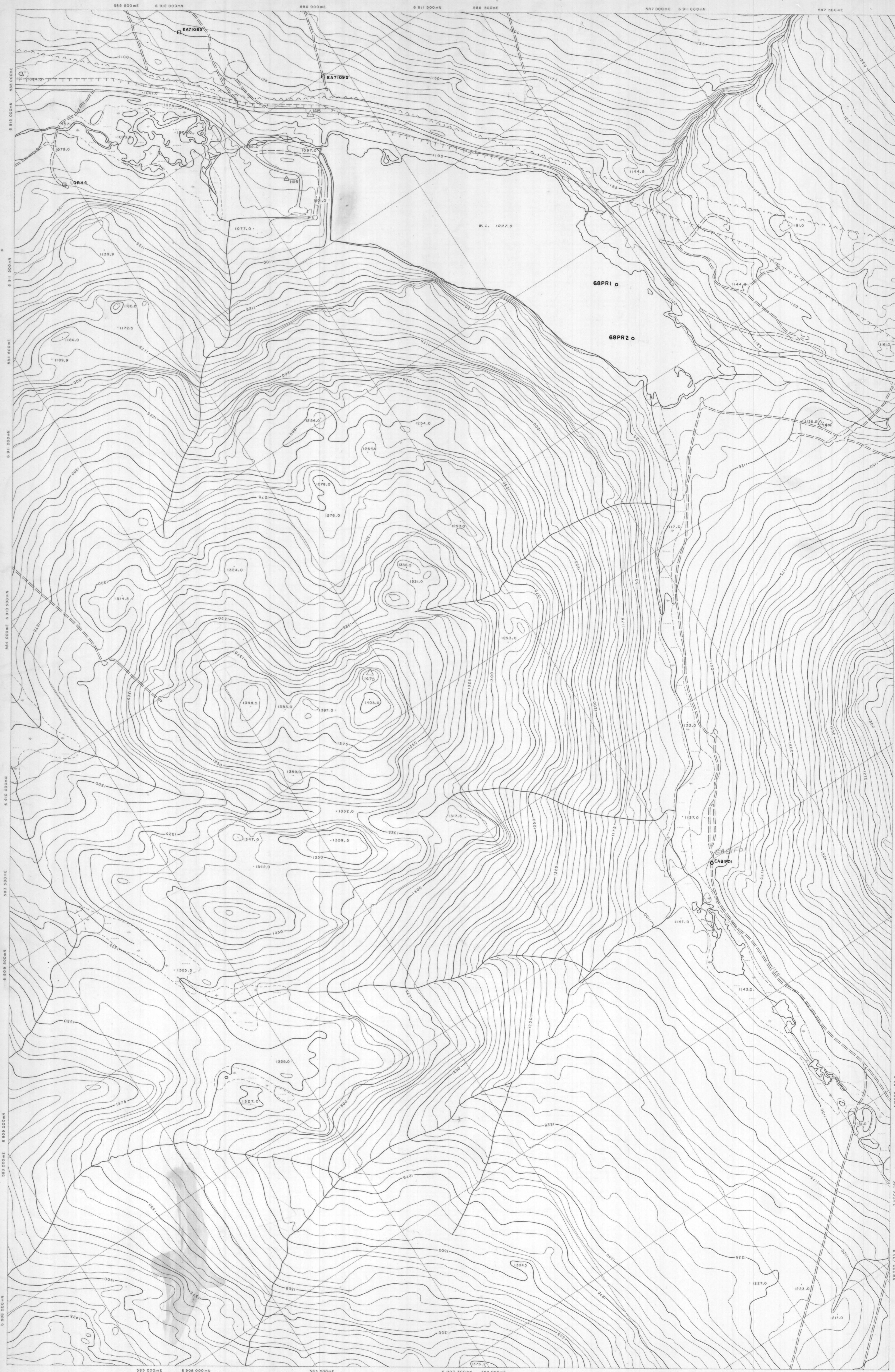


SHEET N<sup>o</sup> E-6-4 W<sub>2</sub>  
DRILL HOLE PLAN

ADJOINS SHEET N<sup>o</sup> E-6-6 W<sub>2</sub>

SHEET N<sup>o</sup> E-6-4 W<sub>2</sub>  
DRILL HOLE PLAN

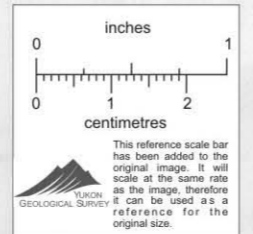


Orthophoto map compiled from aerial photography taken in August, 1979 by North West Survey Corporation International Ltd.  
Coordinates shown are U.T.M. coordinates based on Clarke's Spheroid of 1866 and are computed for Zone 8.  
Elevations shown are Geodetic elevations based on the North American Datum, 1927.  
Horizontal and vertical control survey was performed by Hosford, Impey, Walter & Associates Ltd. and North West Survey Corporation (Tucson) Ltd. in the summer of 1979 for Cyprus Anvil Mining Corporation and is included in a report of the same date.  
Any conflict between contour numbers and planimetric detail is due to planimetric detail being added at a later date.  
Sheet No. E-6-4 (W 1/2)  
DRILL HOLE PLAN

- ROTARY DRILL HOLE  
SEE LOCUS IN FILE
- ROTARY DRILL HOLE  
SEE LOCUS IN FILE
- DIAMOND DRILL HOLE  
SEE LOCUS IN FILE
- DIAMOND DRILL HOLE  
SEE LOCUS IN FILE

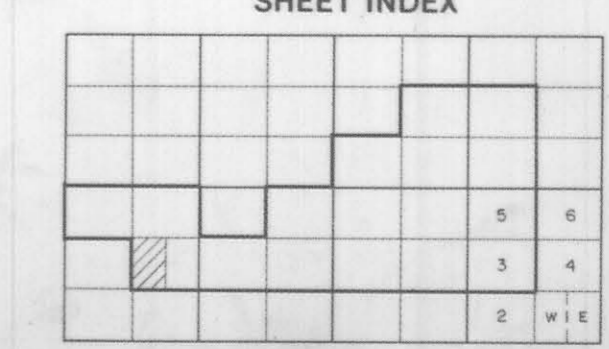
CYPRUS ANVIL MINING CORPORATION

**ANVIL AREA  
DRILL HOLE PLAN**  
Scale 1:5000  
Contour Interval 5 Metres



010460

NORTH WEST SURVEY CORPORATION INTERNATIONAL LTD.



SHEET N<sup>o</sup>  
E-6-4 W<sub>2</sub>  
DRILL HOLE PLAN

ADJOINS SHEET N<sup>o</sup> E-6-4 W<sub>2</sub>