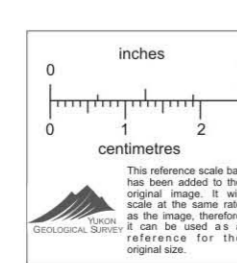
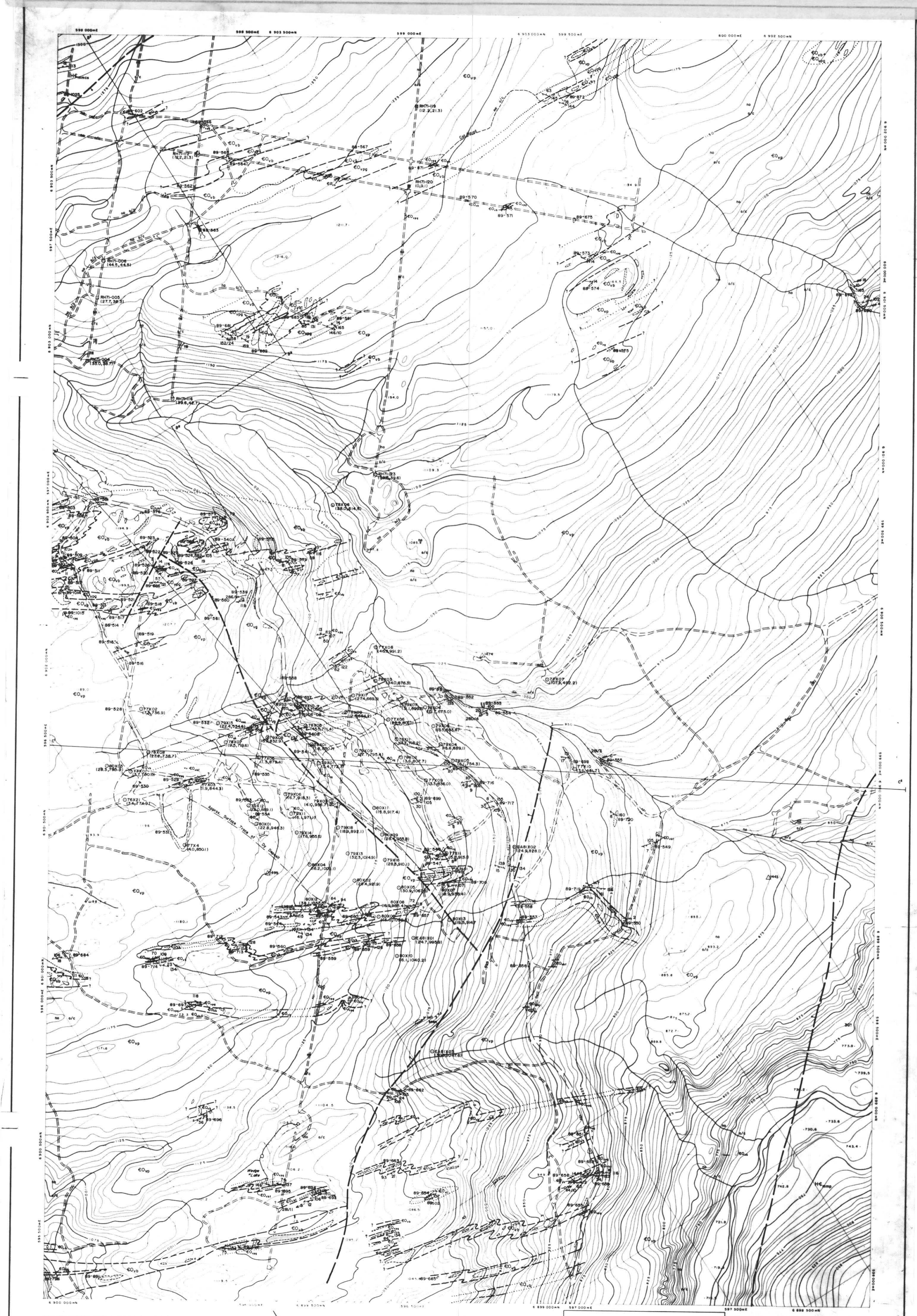


F-6-4 (E/2)  
Dy  
1:12,000  
Geology



The information on this map was derived from aerial photography taken in August, 1979 by North West Survey Corporation International Ltd. Coordinates shown are U.T.M. coordinates based on Clarke Spheroid of 1866 and are computed for Zone 8. Elevations shown are Geoidal elevations based on the North American Datum, 1987. Horizontal and vertical control survey was performed by Horsford, Innes, Water & Associates Ltd. and North West Survey Corporation (Trust) Ltd. in the summer of 1979 for Cyprus Anvil Mining Corporation and is included in a report of the same date. The symbols shown on this map and planimetric data is due to planimetric data being added at a later date.

Sheet No. F-6-4 (E 1/2) Dy

CURRAGH RESOURCES INC.

ANVIL AREA 010479

Scale 1:5000  
Contour Interval 5 Metres

GEOLOGY  
SHEET F-6-4 (E 1/2)

Scale 1:5000

FIGURE NO. 18 DATE NOV 1989  
DESIGNED BY John Horsford  
DRAWN BY A.J. LIP-87-218  
DRAWING NO. 1

North West Survey Corporation International Ltd.

