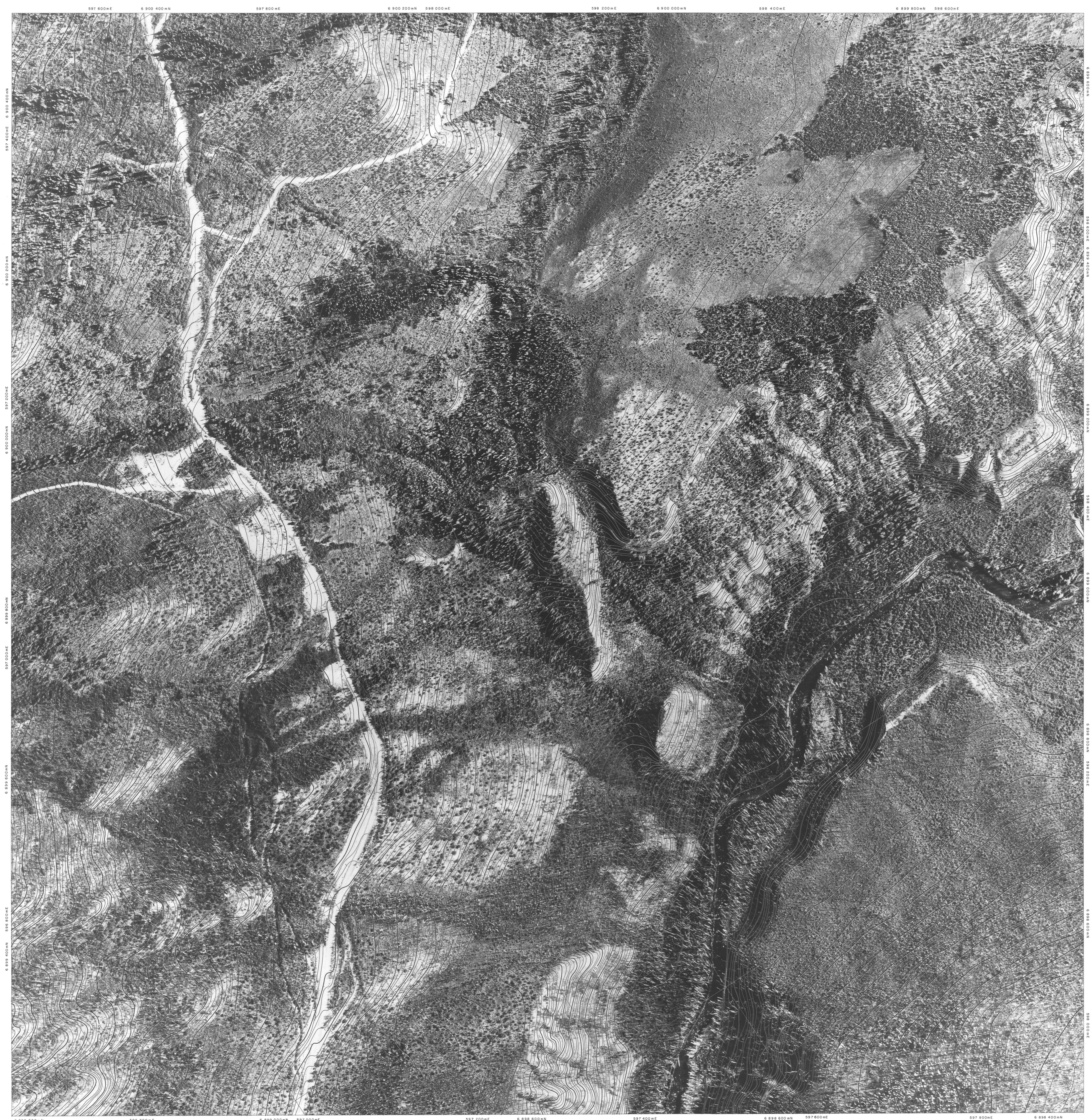


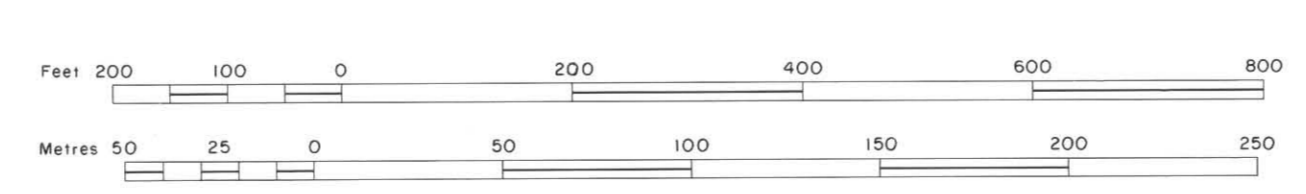
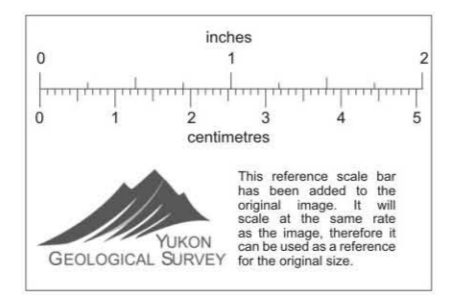
Topo - 1:2000
 SHEET NO. F-6-4 (E-1)



Orthophoto map compiled from aerial photography taken in August, 1979 by North West Survey Corporation International Ltd. Coordinates shown are U.T.M. coordinates based on Clarkes Spheroid of 1866 and are computed for Zone 8. Elevations shown are Geodetic elevations based on the North American Datum, 1927. Horizontal and vertical control survey was performed by Hosiard, Impey, Walter & Associates Ltd. and North West Survey Corporation (Yukon) Ltd. in the summer of 1979 for Cyprus Anvil Mining Corporation and is included in a report of the same date.

CYPRUS ANVIL MINING CORPORATION
 ANVIL AREA 010510
 Scale 1:2000
 Contour Interval 2.5 Metres

NORTH WEST SURVEY CORPORATION INTERNATIONAL LTD.



SHEET INDEX

			F-6-4(E-1)
F-6-4(W/2)	F-6-4(E/2)		