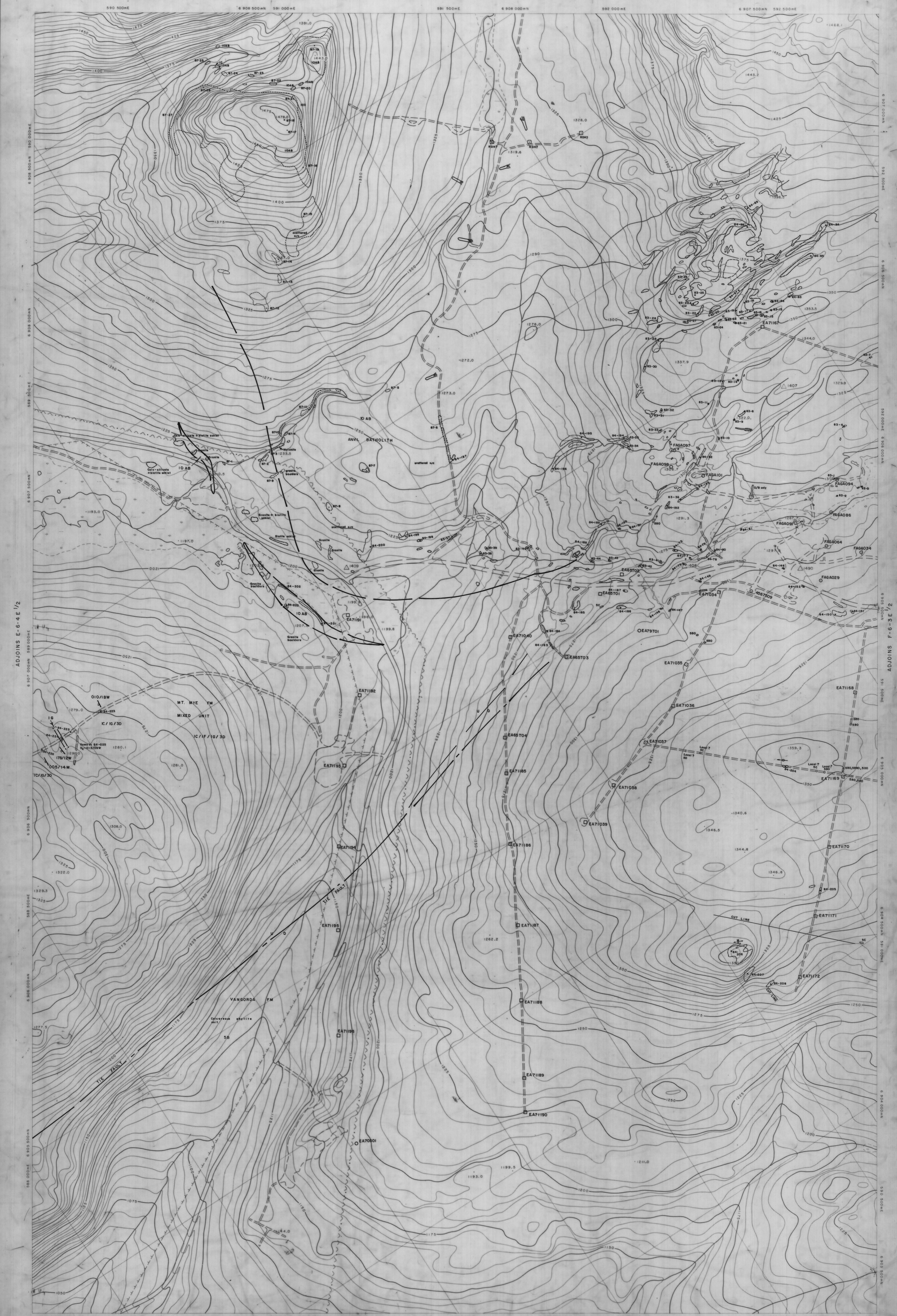


SHEET NR F-6-3W 1/2  
GEOLOGY MAP

SHEET NR F-6-3W 1/2  
GEOLOGY MAP



Orthophoto map compiled from aerial photography taken in August, 1979 by North West Survey Corporation International Ltd.  
Coordinates shown are U.T.M. coordinates based on Clarke's Spheroid of 1866 and are computed for Zone 8.  
Elevations shown are Geodetic elevations based on the North American Datum, 1927.  
Horizontal and vertical control survey was performed by Hoopes, Impy, Weller & Associates Ltd. and North West Survey Corporation (Yukon) Ltd. in the summer of 1979 for Cyprus Anvil Mining Corporation and is included in a report of the same date.  
Any conflict between contour numbers and planimetric detail is due to planimetric detail being added at a later date.  
Sheet No. F-6-3 (W 1/2)  
GEOLOGY MAP

- ROTARY DRILL HOLE  
not located in field
- ROTARY DRILL HOLE  
located in field
- DIAMOND DRILL HOLE  
not located in field
- DIAMOND DRILL HOLE  
located in field

**CURRAGH RESOURCES INC.**  
**ANVIL AREA  
GEOLOGY MAP** FIGURE 2  
Scale 1:5000  
Contour Interval 5 Metres

010527

NOTE: NOT ALL PROSPECTORS AIRBORNE DRILL HOLES  
ARE SHOWN IN THE VICINITY OF FIRTH DEPOSIT.

SHEET INDEX


SHEET NR  
F-6-3W 1/2  
GEOLOGY MAP