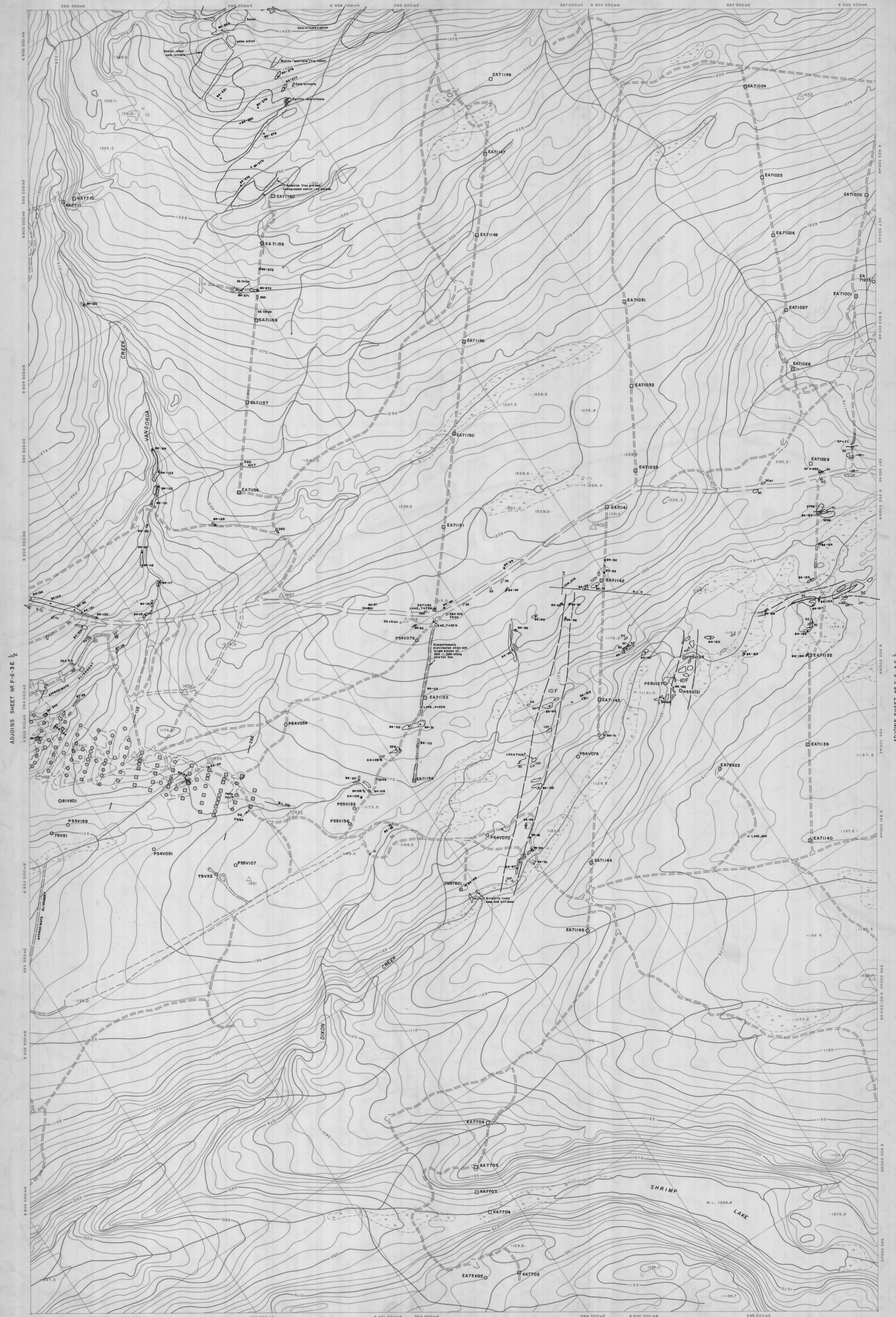


SHEET N° F-6-4W 1/2  
GEOLOGY MAP

ADJOINS SHEET F-6-W 1/2

SHEET N° F-6-4W 1/2  
GEOLOGY MAP



Orthophoto map compiled from aerial photography taken in August, 1979 by North West Survey Corporation International Ltd.  
Coordinates shown are U.T.M. coordinates based on Clarke's Spheroid of 1866 and are computed for Zone 5.  
Elevations shown are Geoidetic elevations based on the North American Datum, 1927.  
Horizontal and vertical control survey was performed by Hoaford, Impney, Walter & Associates Ltd. and North West Survey Corporation (Yukon) Ltd. in the summer of 1979 for Cyprus Anvil Mining Corporation and is included in a report of the same date.  
Any conflict between contour numbers and planimetric detail is due to planimetric detail being added at a later date.  
Sheet No. F-6-4 (W 1/2)  
GEOLOGY MAP

- ROTARY DRILL HOLE NOT LOCATED IN FIELD
- ROTARY DRILL HOLE LOCATED IN FIELD
- DIAMOND DRILL HOLE NOT LOCATED IN FIELD
- DIAMOND DRILL HOLE LOCATED IN FIELD

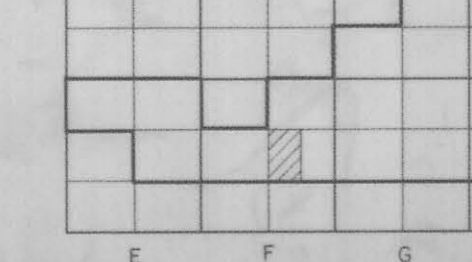
**CURRAGE RESOURCES INC.**  
**ANVIL AREA**  
**GEOLOGY MAP**  
Scale 1:5000  
Contour Interval 5 Metres

010529

NOTE: THIS MAP DOES NOT SHOW ALL PROSPECTOR AIRSHIRT DRILL HOLES IN AND AROUND THE VANSONDA DEPOSIT.

NORTH WEST SURVEY CORPORATION INTERNATIONAL LTD.

SHEET INDEX



SHEET N° F-6-4W 1/2  
GEOLOGY MAP

