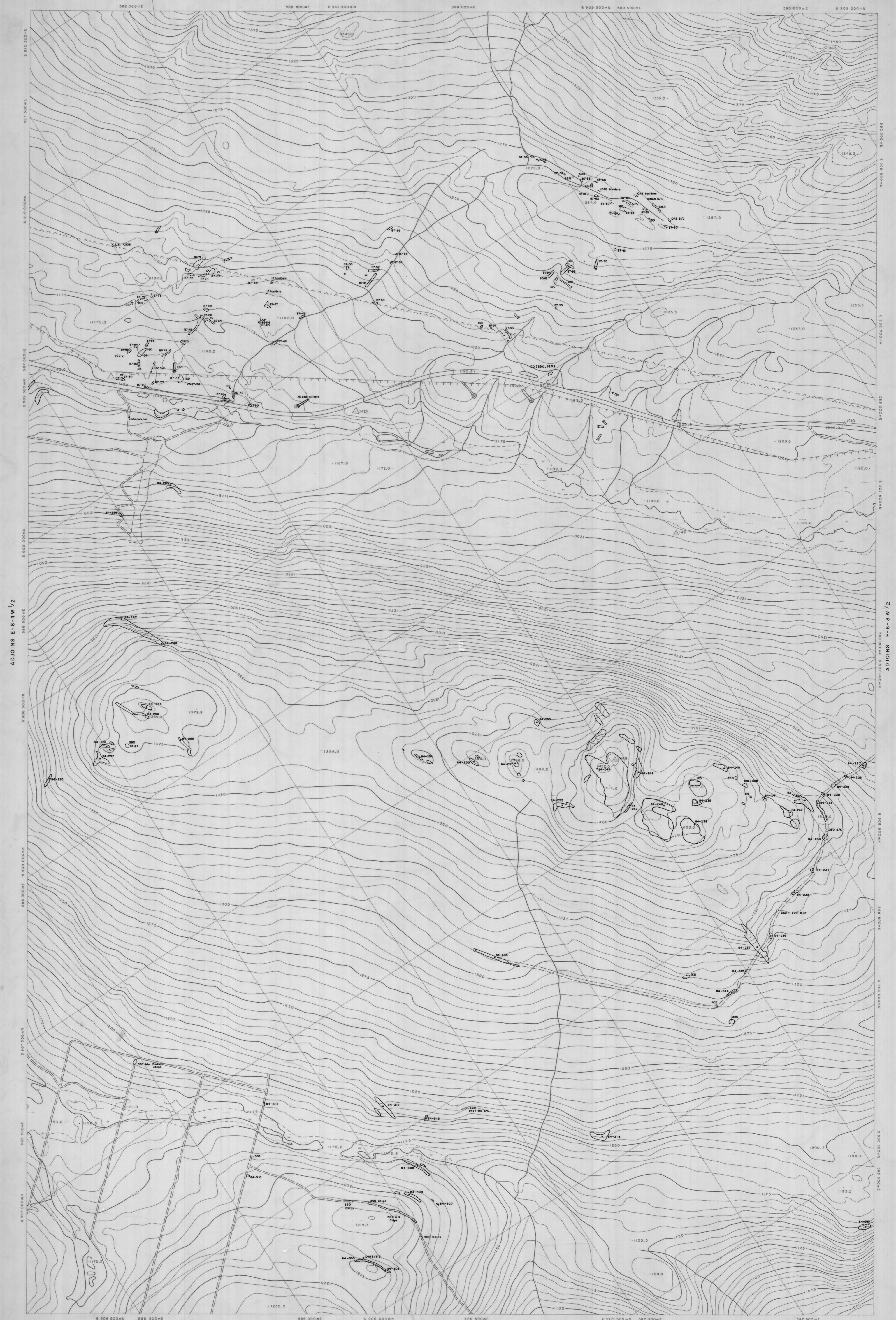


SHEET No E-6-4 E₁
 GEOLOGY MAP

ADJOINS E-6-6 E₁

SHEET No E-6-4 E₁
 GEOLOGY MAP



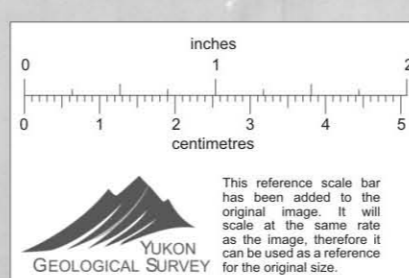
Orthophoto map compiled from aerial photography taken in August, 1979 by North West Survey Corporation International Ltd.
 Coordinates shown are U.T.M. coordinates based on Clarke's Spheroid of 1866 and are computed for Zone 8.
 Elevations shown are Geodetic elevations based on the North American Datum, 1927.
 Horizontal and vertical control survey was performed by Hosford, Imprey, Weller & Associates Ltd. and North West Survey Corporation (Yukon) Ltd. in the summer of 1979 for Cyprus Anvil Mining Corporation and is included in a report of the same date.
 Any conflict between contour numbers and planimetric detail is due to planimetric detail being added at a later date.
 Sheet No. E-6-4 (E 1/2)
 GEOLOGY MAP

CYPRUS ANVIL MINING CORPORATION

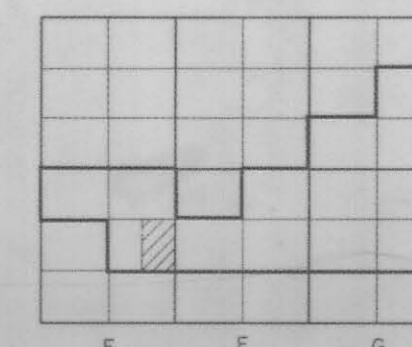
ANVIL AREA
GEOLOGY MAP
 Scale 1:5000
 Contour Interval 5 Metres

010534

NORTH WEST SURVEY CORPORATION INTERNATIONAL LTD.



SHEET INDEX



SHEET No
 E-6-4 E₁
 GEOLOGY MAP