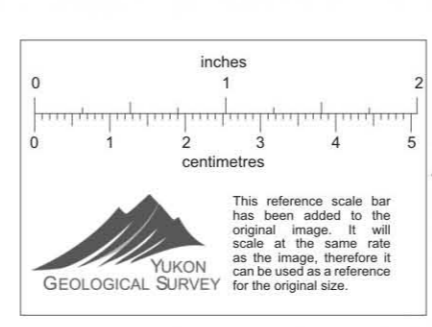


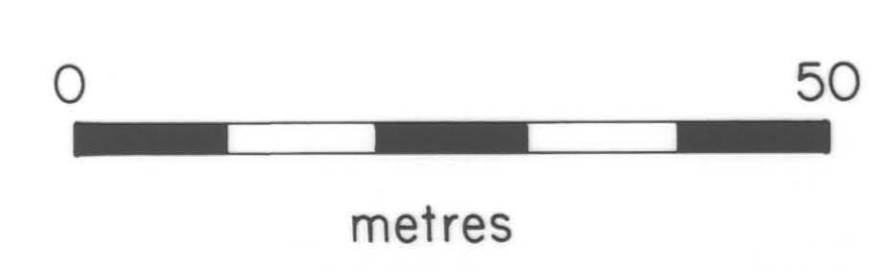
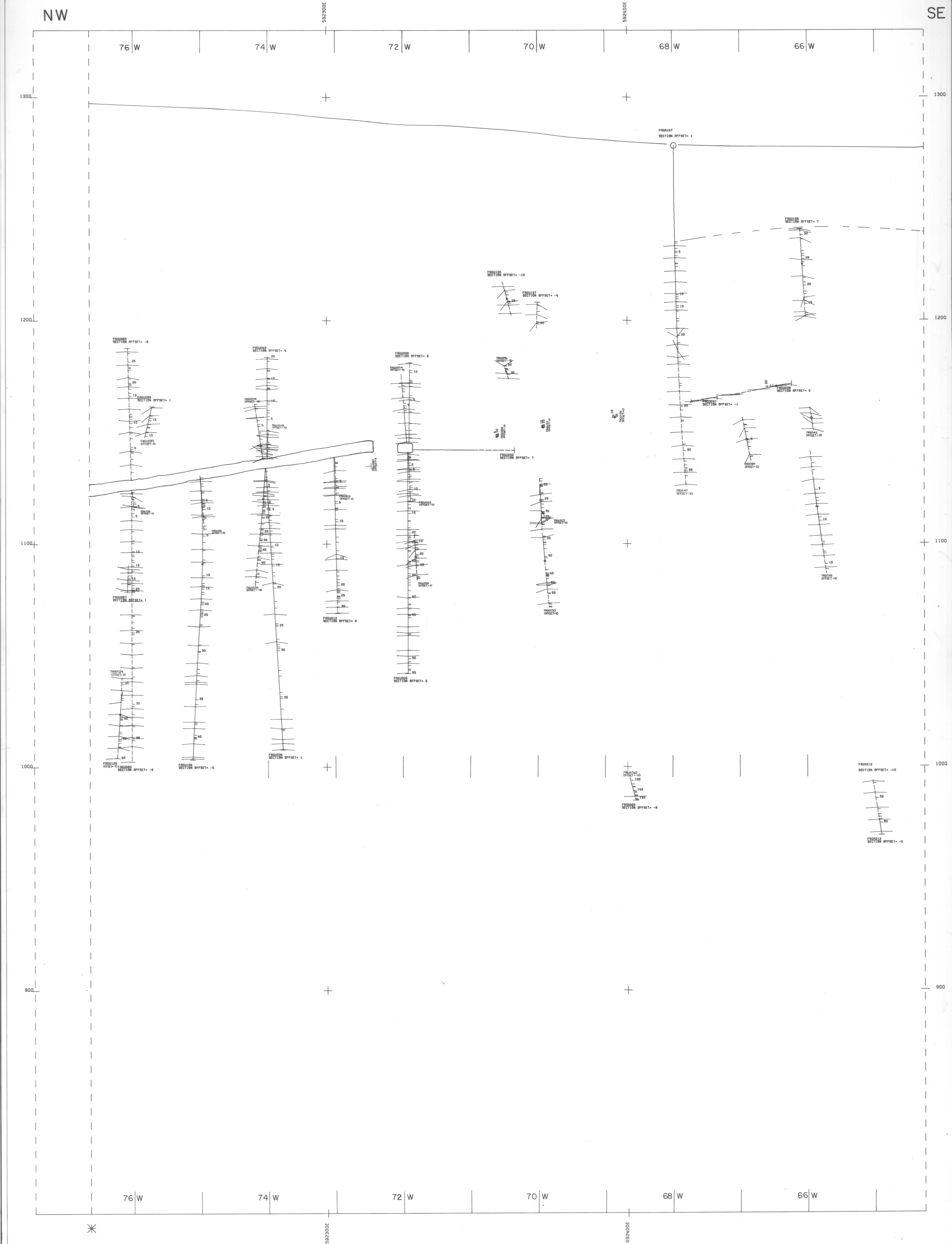
GRUM DEPOSIT
SECTION: 03N
PANEL: 2
S2 STRUCTURE

010982



SCALE: 500 UNITS METRES
ORIGIN STATION: PROSOMAS 01070
PLUNGE CORRECTION: 40
3 DEC 1988 01:30 PM
COORDINATE SYSTEM: U. T. M.

CYPRUS ANVIL MINING CORPORATION
GRUM
VERTICAL CROSS SECTION 03N
42 DEG VIEW AZIMUTH 132 DEG PROFILE



INDEX		
SHEET 1	SHEET 2	SHEET 3

INTERPRETED BY	DATE	DRAWN BY	DATE

CYPRUS ANVIL MINING CORPORATION	
GRUM DEPOSIT	
SCALE: 1:500 metric	FIGURE NO.