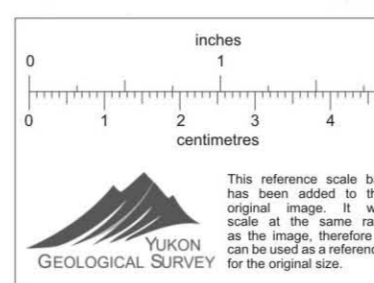


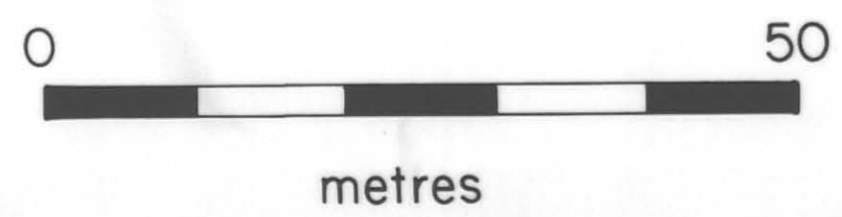
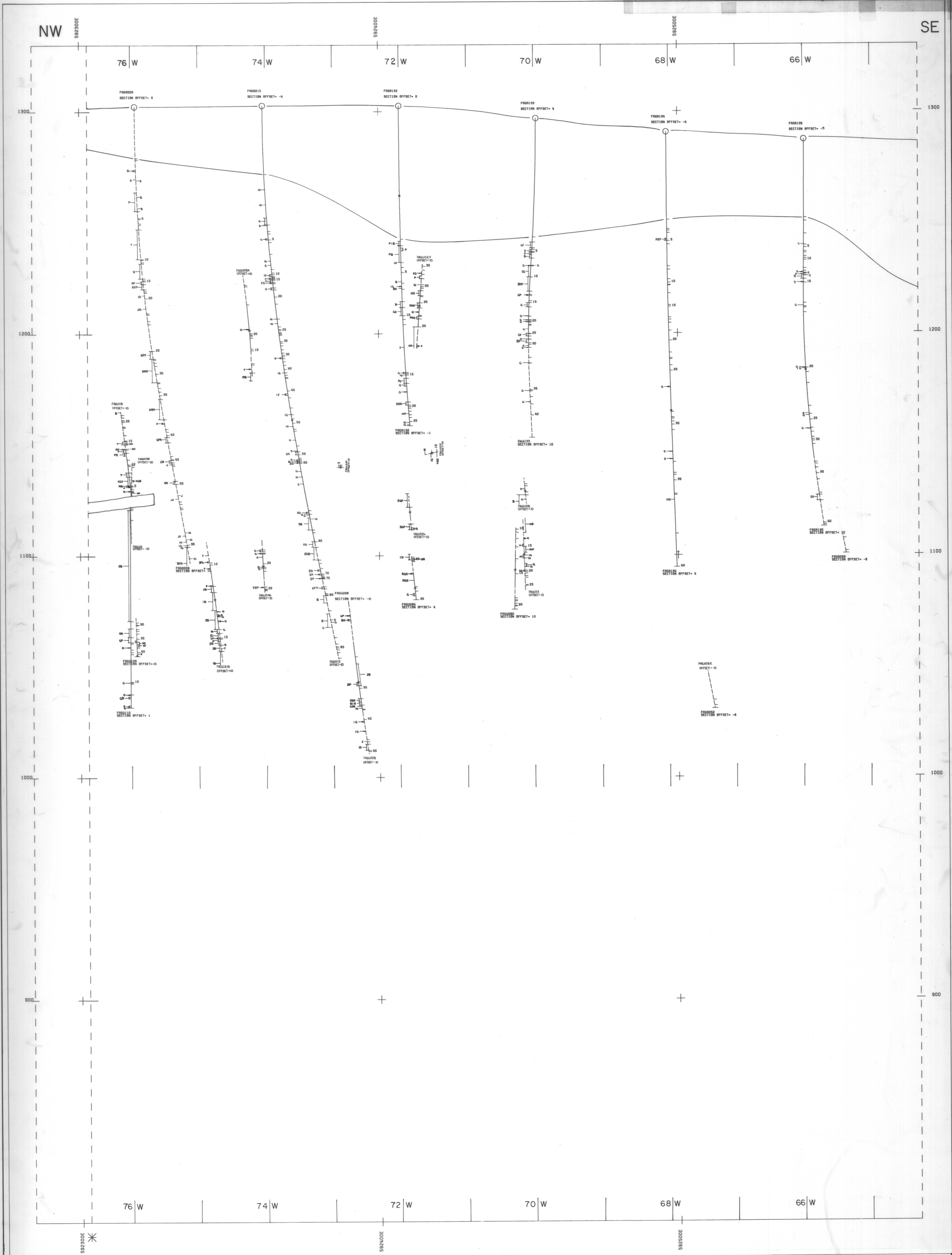
GRUM DEPOSIT
SECTION: 07N
PANEL: 2
FAULT FEATURES

011023



SCALE: 500 UNITS, METRES
DRAWN BY: PROSOPH DIMITRI
PLANS CONNECTION: 00
27 NOV 1988 14:00 PM
COORDINATE SYSTEM: U. T. M.

CYPRUS ANVIL MINING CORPORATION
GRUM
VERTICAL CROSS SECTION 07N
42 DEG VIEW AZIMUTH 132 DEG PROFILE



INDEX		
SHEET 1	SHEET 2	SHEET 3

INTERPRETED BY	DATE	DRAWN BY	DATE

CYPRUS ANVIL MINING CORPORATION
GRUM DEPOSIT

SCALE: 1:500 metric FIGURE NO.