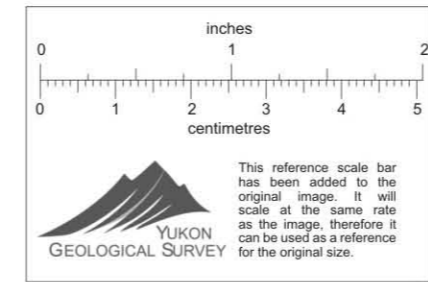


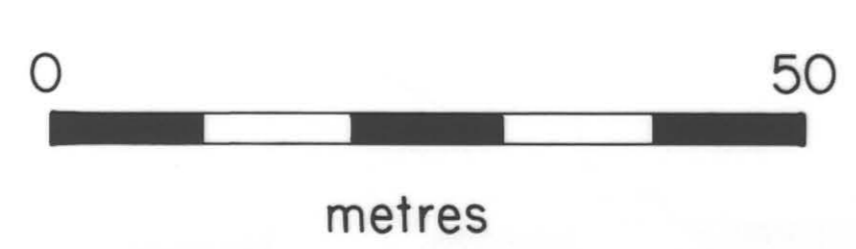
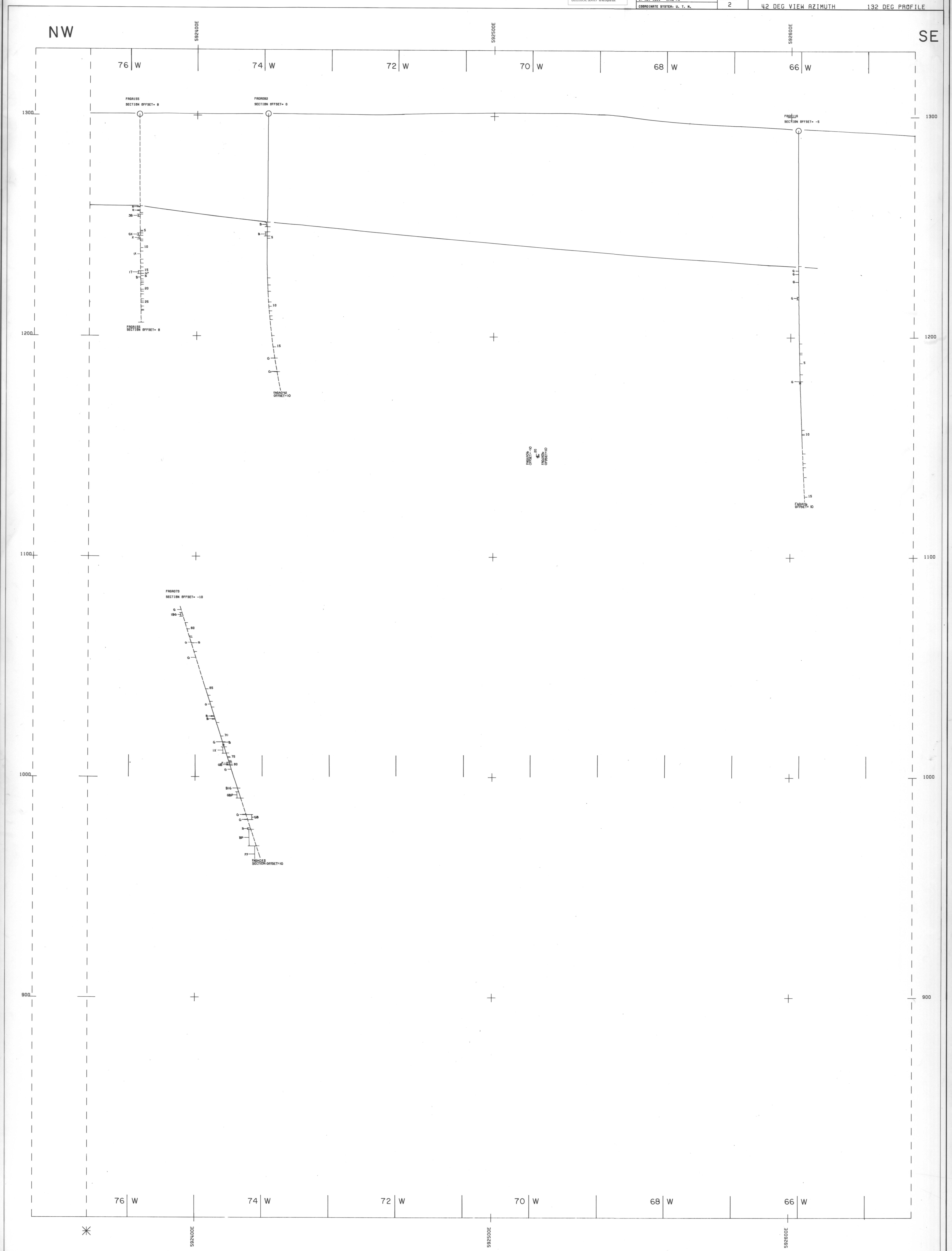
GRUM DEPOSIT
SECTION: 10N
PANEL: 2
FAULT FEATURES

011044



SCALE: 500 UNITS, METRES
DRAWN BY: PROGRAM 01070
PLUME CONNECTION: NS
27 NOV 1984 3:12 PM
COORDINATE SYSTEM: U. T. M.

CYPRUS ANVIL MINING CORPORATION
GRUM
VERTICAL CROSS SECTION 10N
42 DEG VIEW AZIMUTH 132 DEG PROFILE



INDEX		
SHEET 1	SHEET 2	SHEET 3

INTERPRETED BY	DATE	DRAWN BY	DATE

CYPRUS ANVIL MINING CORPORATION	
GRUM DEPOSIT	
SCALE: 1:500 metric	FIGURE NO.