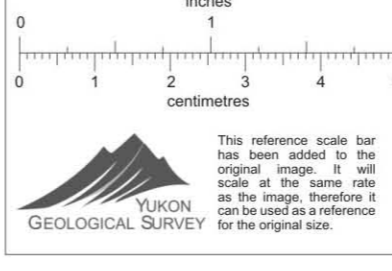
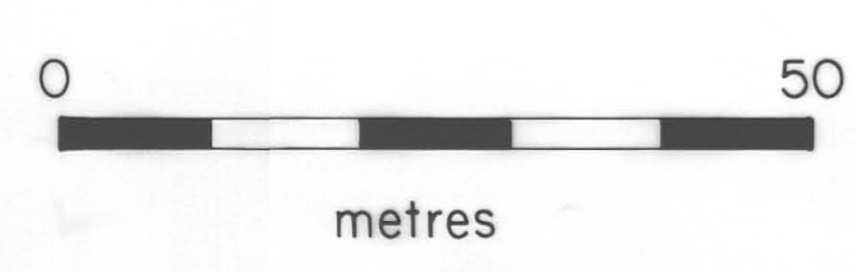
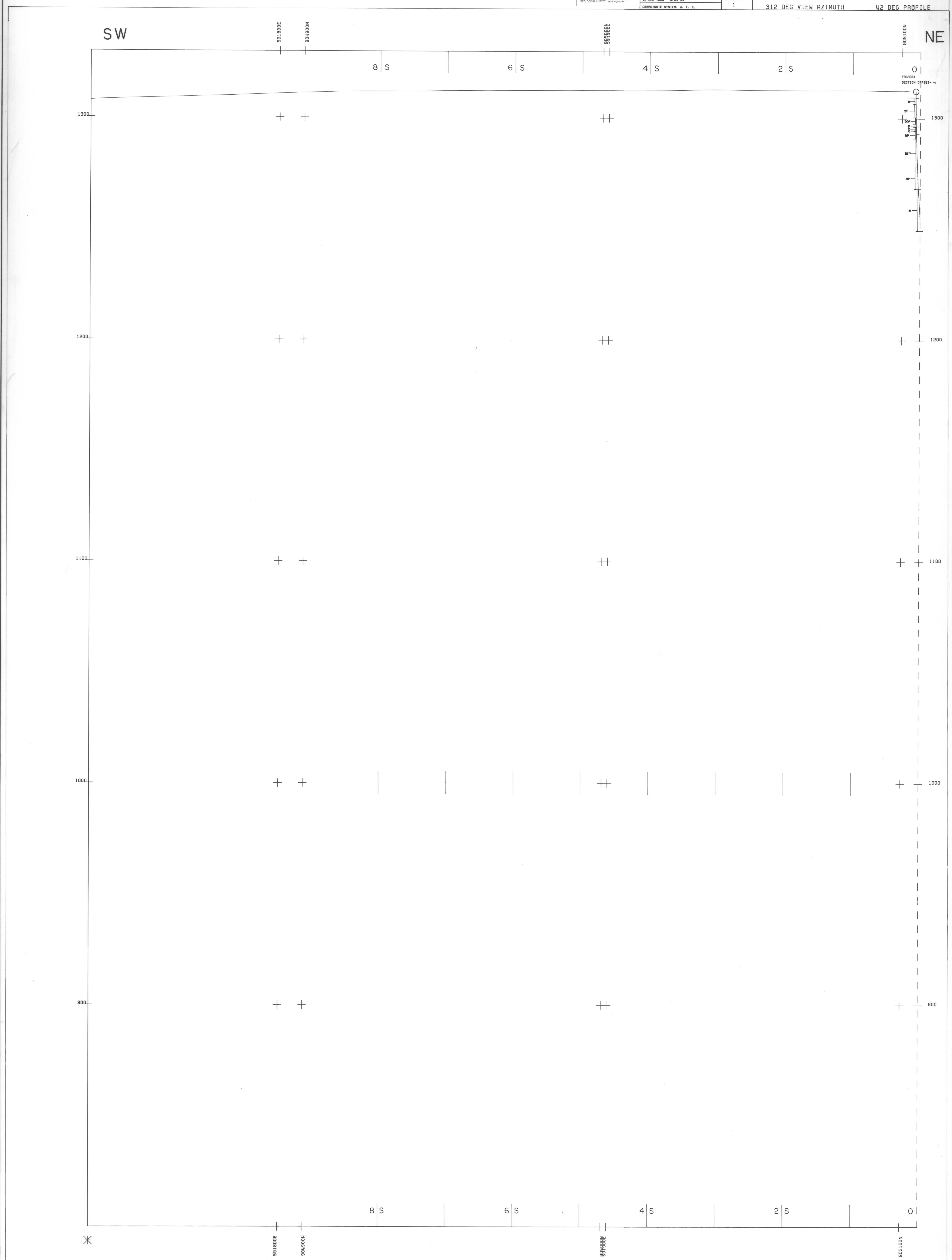



011143

		CYPRUS ANVIL MINING CORPORATION GRUM DEPOSIT	
SCALE: 500 UNITS, METRES DRAWN BY: PROSAR DUTTO		PLUNGE CORRECTION: PLUNGE 15 TEND: 312 10 DEC 1989 8:43 AM	
VERTICAL CROSS SECTION 84W 312 DEG VIEW AZIMUTH 42 DEG PROFILE		PANEL NO: 1	
COORDINATE SYSTEM: U. T. M.			



INDEX

	SHEET 2	SHEET 3
--	---------	---------

INTERPRETED BY	DATE	DRAWN BY	DATE	CYPRUS ANVIL MINING CORPORATION GRUM DEPOSIT
				SCALE: 1:500 metric
				FIGURE NO.