

NOTICE

THIS MAP IS ISSUED AS A PRELIMINARY GUIDE FOR WHICH THE DEVELOPMENT OF INDIAN AFFAIRS AND NORTHERN DEVELOPMENT WILL ACCEPT NO RESPONSIBILITY FOR ANY ERRORS, INACCURACIES OR OMISSIONS WHATSOEVER.

SHEET 105K-10

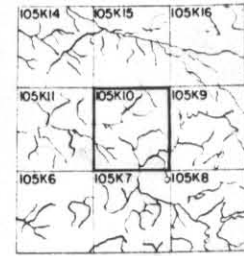
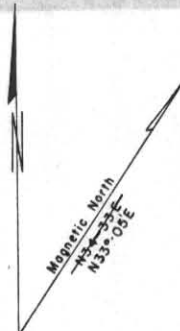
LATITUDE 62° 30' To 62° 45'  
LONGITUDE 132° 30' To 133° 00'

CANADA  
DEPARTMENT OF NORTHERN AFFAIRS AND NATIONAL RESOURCES  
NORTHERN ADMINISTRATION AND LANDS BRANCH  
LANDS DIVISION

SCALE: 1/2 MILE TO 1 INCH

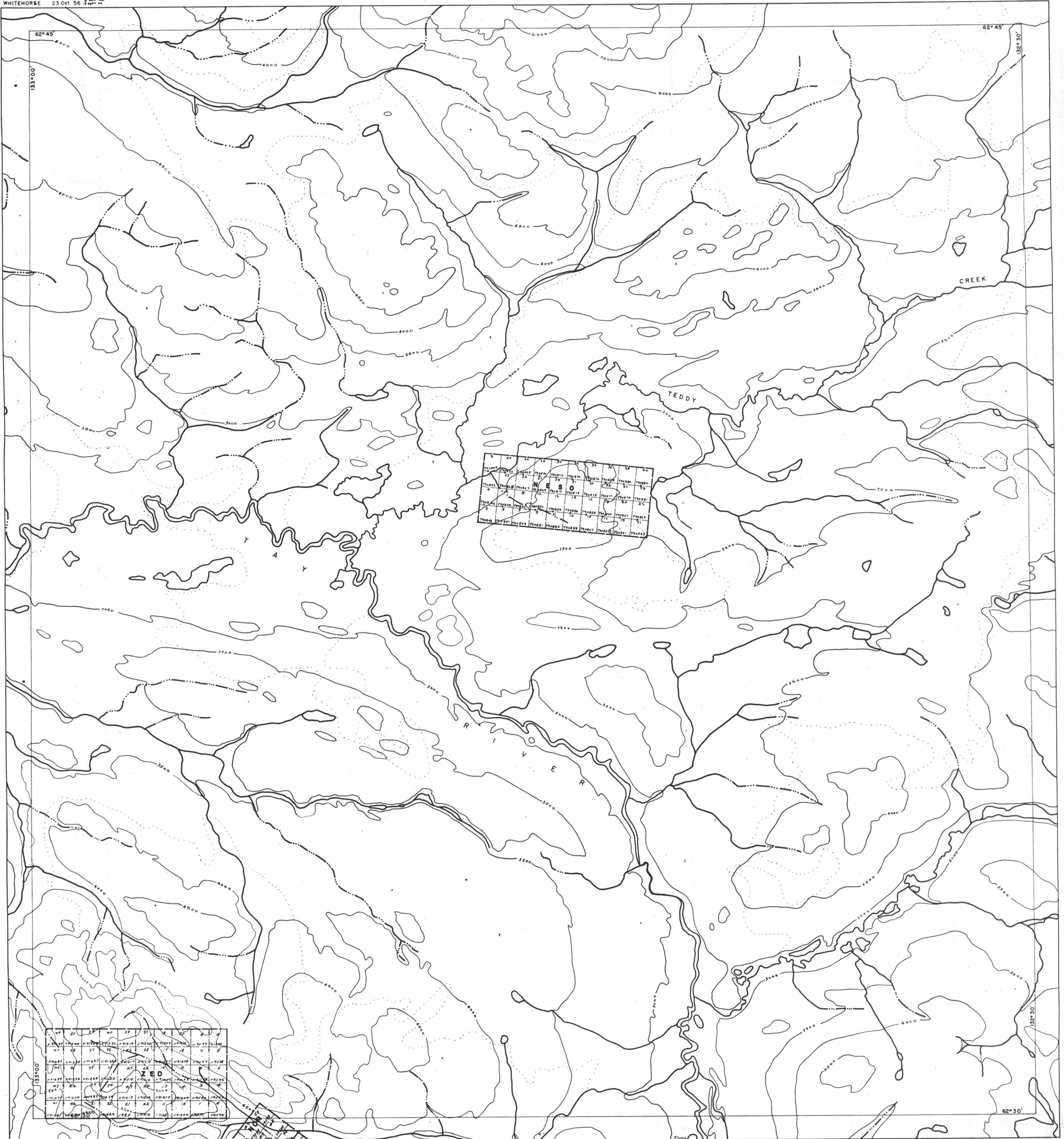


ISSUED UNDER THE AUTHORITY OF THE MINISTER OF NORTHERN AFFAIRS AND NATIONAL RESOURCES



011334

WHITEHORSE 17 Oct 73  
23 Oct 56



105K-10