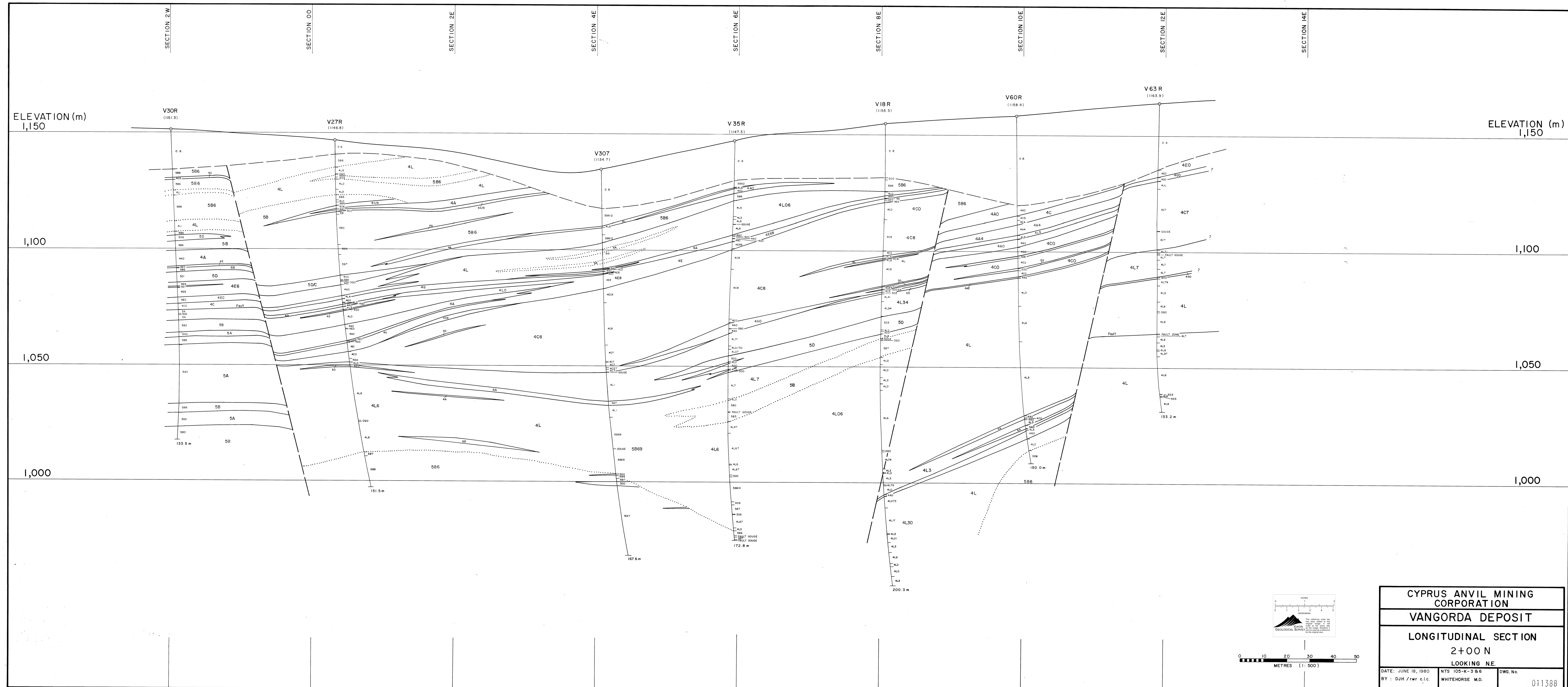


V. 1000  
 LONG - SECT  
 1:500  
 1:500



CYPRUS ANVIL MINING CORPORATION		
VANGORDA DEPOSIT		
LONGITUDINAL SECTION 2+00 N LOOKING NE		
DATE: JUNE 18, 1980	NTS 105-K-3 B 6	DWG. No.
BY: D.J.H./rwr c.l.c.	WHITEHORSE M.D.	011388