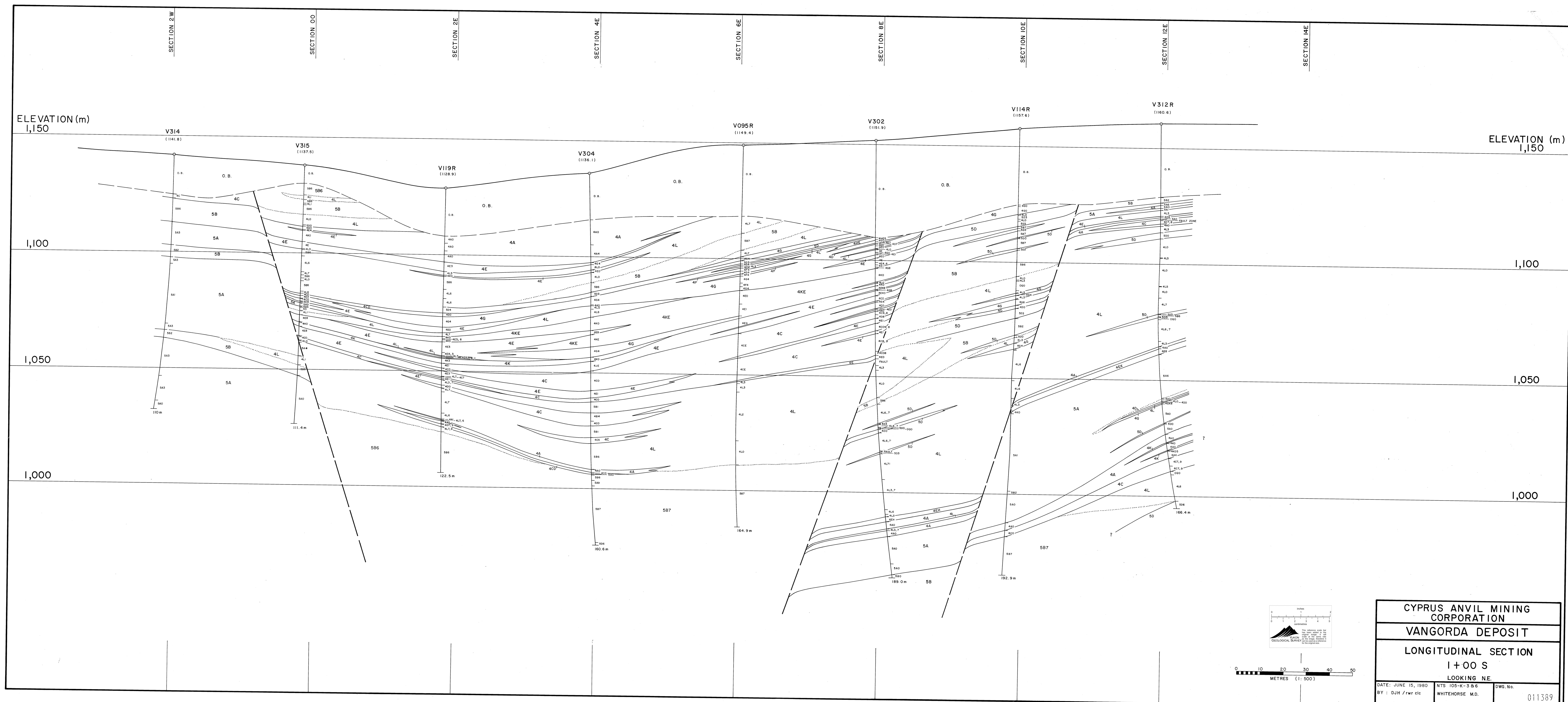


UNCLASSIFIED
 Long Section
 1:1000
 Community



CYPRUS ANVIL MINING CORPORATION		
VANGORDA DEPOSIT		
LONGITUDINAL SECTION		
I + 00 S		
LOOKING NE		
DATE: JUNE 15, 1980	NTS: 100'-1"=3.0	DWG. No.
BY: DJH / rwr etc	WHITEHORSE M.D.	011389