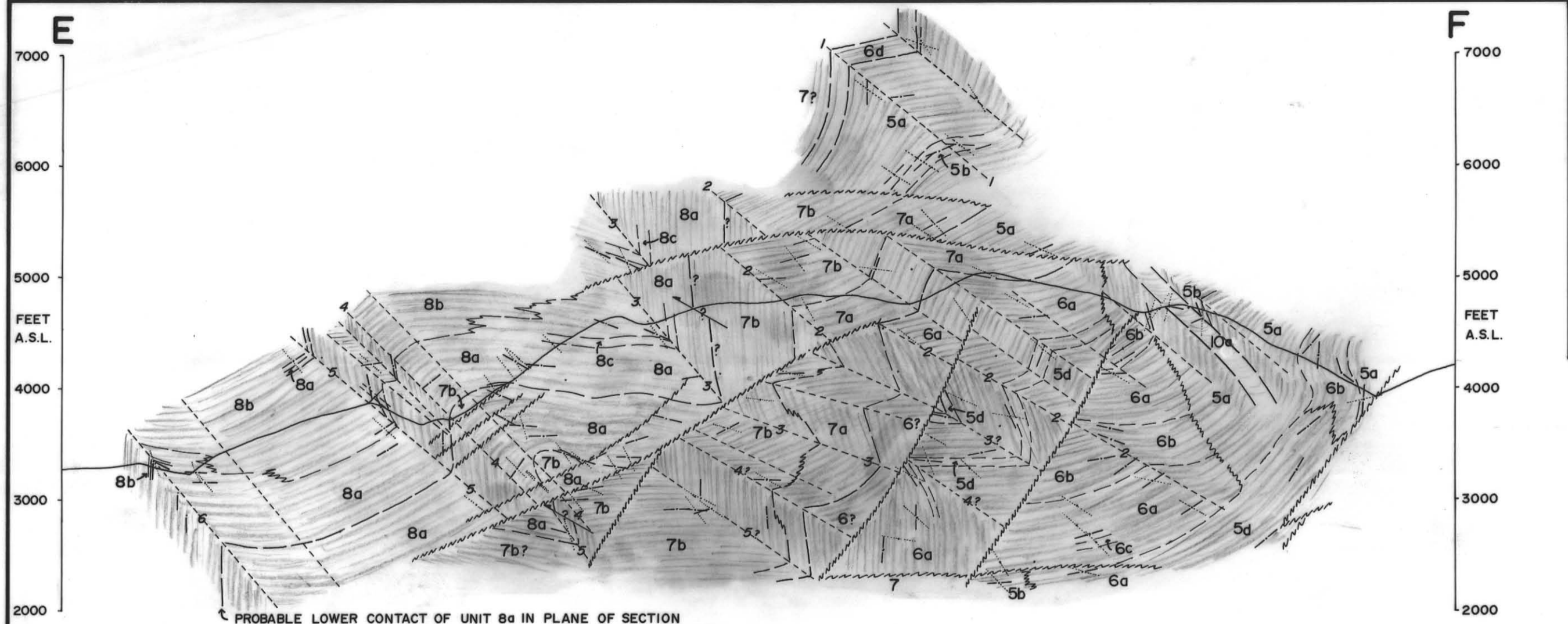


RIDGEMONT MINING CORPORATION

DANA PROSPECT
 ANVIL RANGE PROGRAM
 SECTIONS A-B, C-D, AND E-F

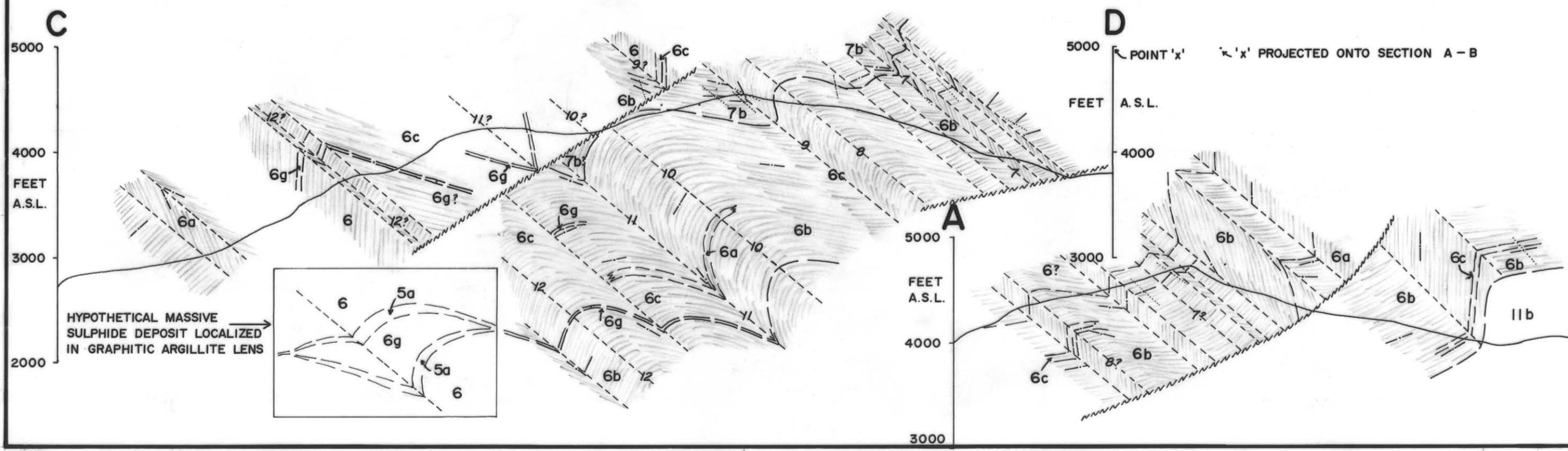
DESIGNED: P. F. LEWIS, 1974

FIGURE 4



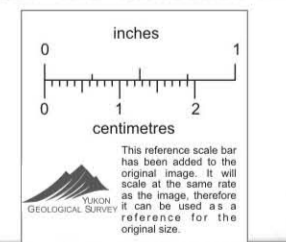
THESE SECTIONS ARE TRUE STRUCTURAL PROFILE SECTIONS PROJECTED ONTO A VERTICAL PLANE TRENDING 025°. TO OBTAIN A TRUE PROFILE SECTION, PROJECT ONTO 025°/70° W, RESULTING IN DECREASE IN VERTICAL SCALE BY A FACTOR = SINE 70° = 0.9397

KEY: (ALL DATA PROJECTED FROM SURFACE, ALONG 115°/20°, THROUGH TRUE PROFILE SECTION, ONTO VERTICAL SECTION)



- BEDDING ATTITUDE AND STATION
 - - - AXIAL PLANE SLATY CLEAVAGE ATTITUDE AND STATION
 - - - AXIAL PLANE OF FOLDS
 - - - FAULT TRACE ON SURFACE (FAULTS ARE HIGH ANGLE, NORMAL OR REVERSED)
 - - - POSSIBLE THRUST PLANE
 - - - LITHOLOGICAL CONTACT
 - - - FACIES CONTACT
- a) LITHOLOGICAL UNIT NUMBERS ARE THOSE USED AND EXPLAINED ON MAP 13
- b) MAJOR AXIAL PLANES ARE NUMBERED AS ON MAP 14

HYPOTHETICAL MASSIVE SULPHIDE DEPOSIT LOCALIZED IN GRAPHITIC ARGILLITE LENS



011640

TRIM HERE ↘