

**NOTICE**

THIS MAP IS ISSUED AS A PRELIMINARY GUIDE FOR WHICH THE DEPARTMENT OF INDIAN AFFAIRS AND NORTHERN DEVELOPMENT WILL ACCEPT NO RESPONSIBILITY FOR ANY ERRORS, INACCURACIES OR OMISSIONS WHATSOEVER.

**SHEET 105K-3**

LATITUDE 62°00' TO 62°15'  
LONGITUDE 133°00' TO 133°30'

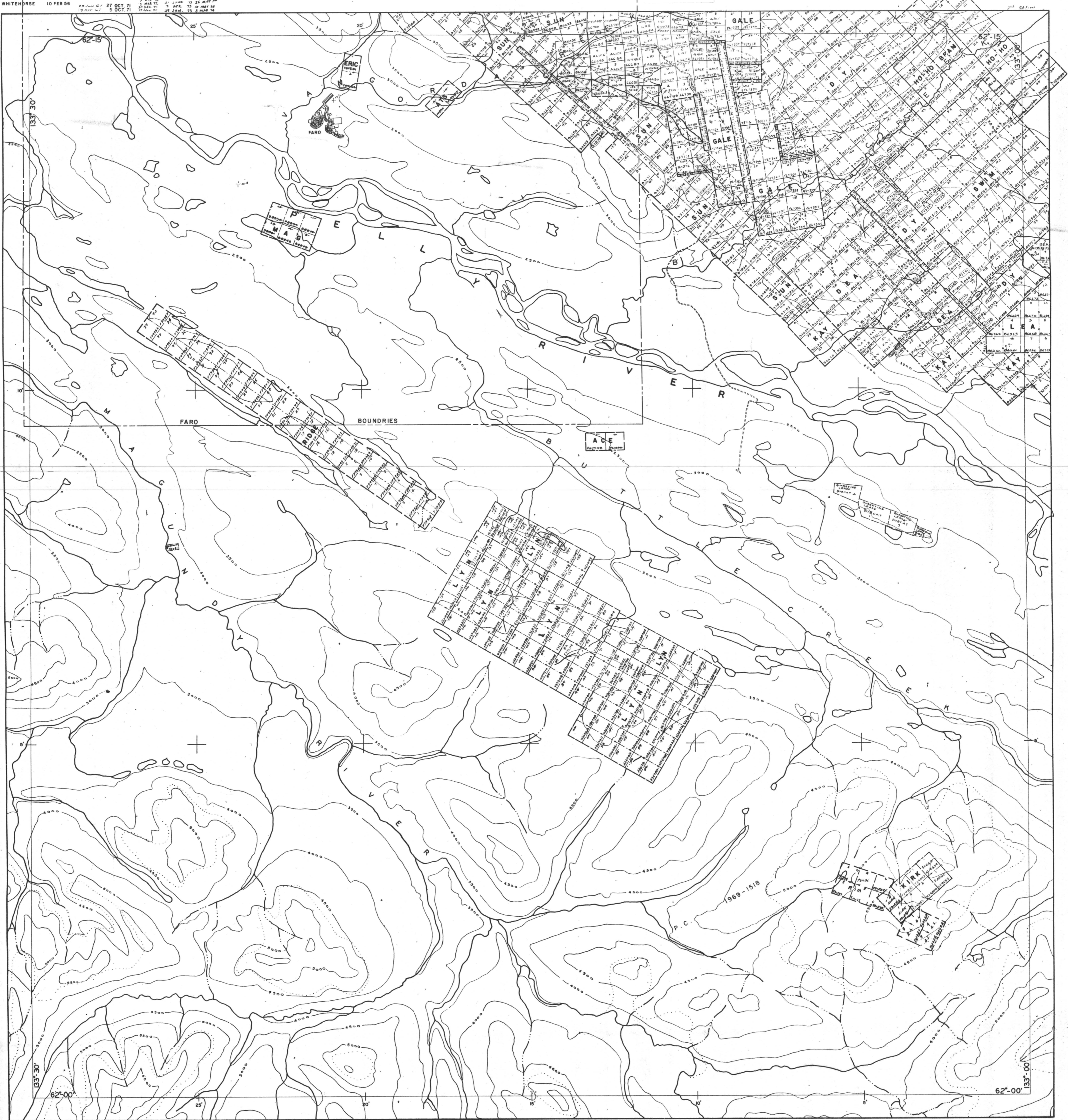
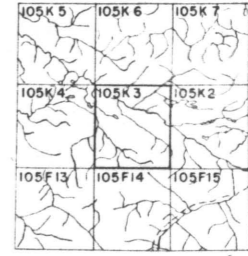
CANADA  
DEPARTMENT OF NORTHERN AFFAIRS AND NATIONAL RESOURCES  
NORTHERN ADMINISTRATION AND LANDS BRANCH  
LANDS DIVISION

SCALE: 1/2 MILE TO 1 INCH

FT. 1500 0 1500 3000 4500 6000 7500 9000 10500 FT.

ISSUED UNDER THE AUTHORITY OF THE MINISTER OF NORTHERN AFFAIRS AND NATIONAL RESOURCES

011750



WHITEHORSE 10 FEB 56  
27 OCT 71  
5 OCT 71