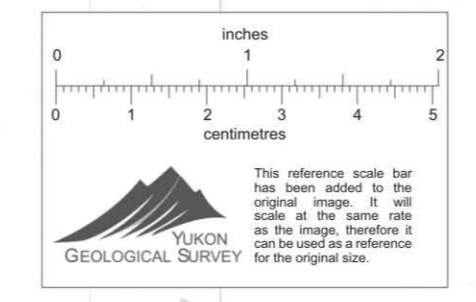


Black
Creek
Geology
&
Geochem

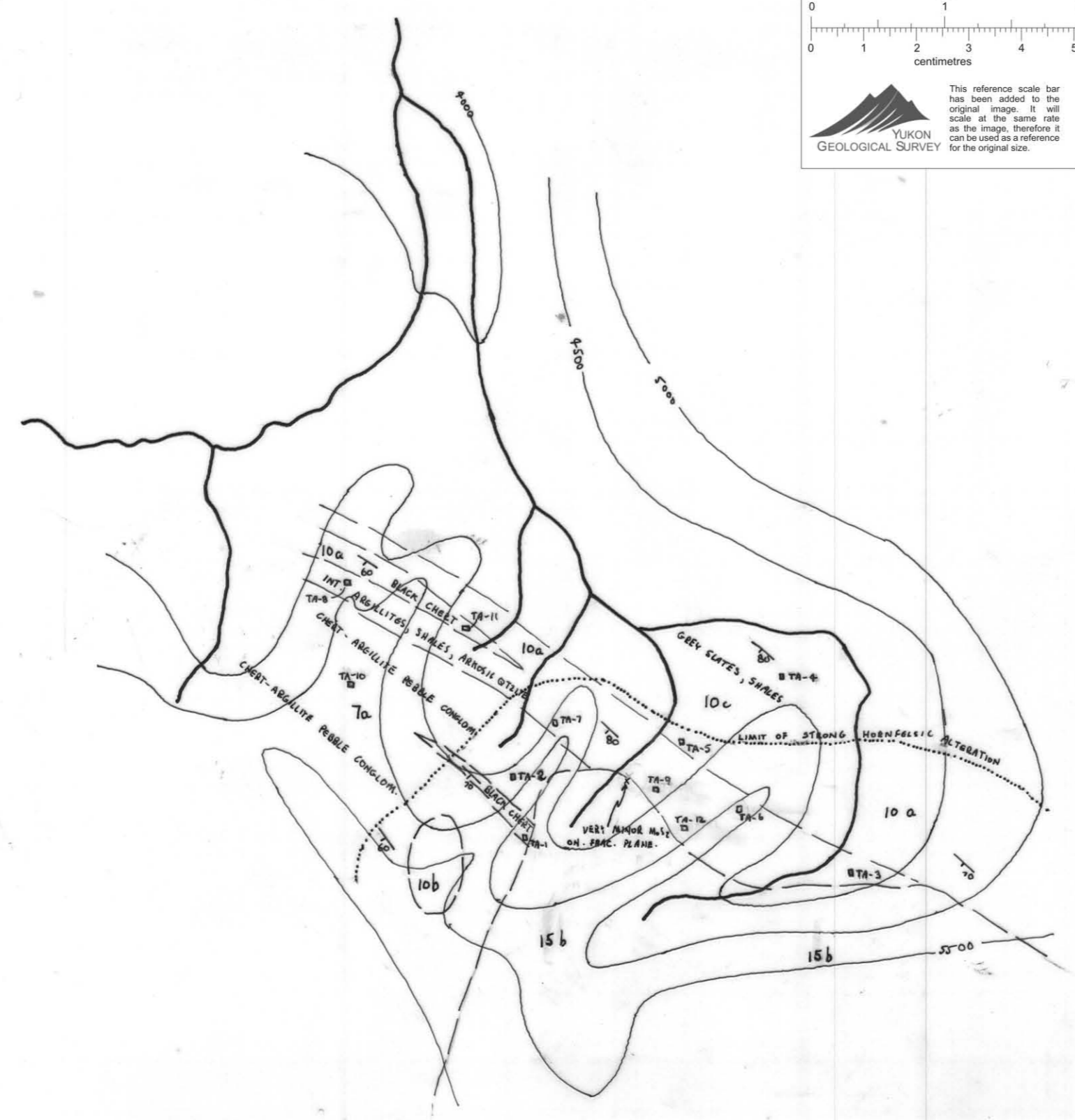


BLACK CREEK AREA
GEOLOGY & GEOCHEMICAL VALUES
SCALE: 1" = 1/4 MILE

011778

LEGEND

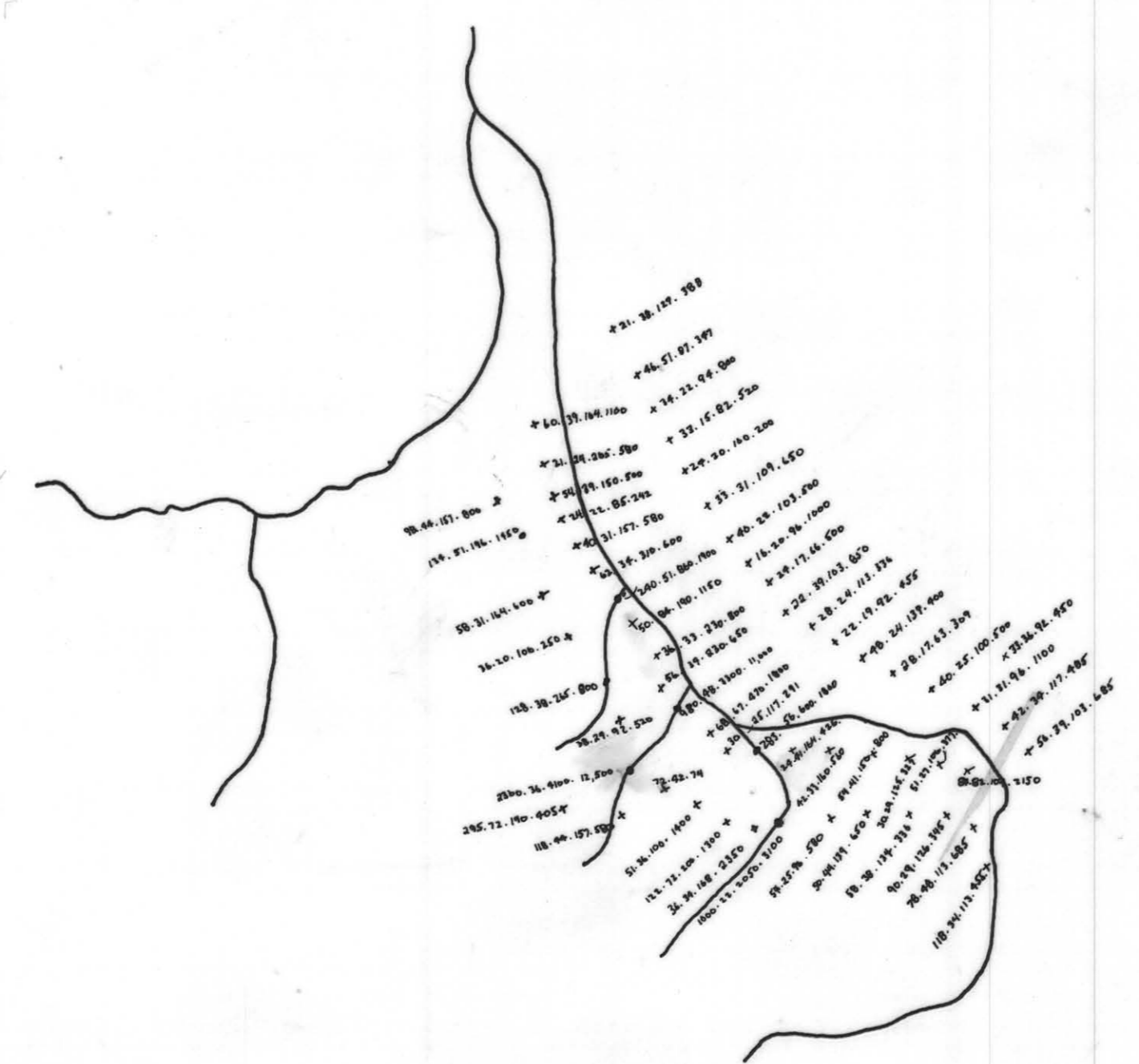
- TERTIARY**
15 b QTZ. MONZONITE
--- INT. CONTACT ---
- MISSISSIPPIAN**
10 c GREY PHYLITES, SLATES
10 a GRAPHITIC CHERTS, ARGILLITES
7 a CHERT PEBBLE CONGLOMERATE
- SYMBOLS**
--- CONTACT ---
--- BEDDING ATTITUDE ---
* ROCK GEOCHEM. SAMPLE SITE



GEOLOGY, ROCK GEOCHEMICAL SAMPLE LOCATION

BLACK CREEK AREA - ROCK GEOCHEMICAL VALUES (ppm)

		Cu	Pb	Zn	Mn
TA-1	v.f.g., slightly rusty, cherty hornfels.	141	24	172	400
TA-2	very hornfelsic chert pebble conglomerate	46	51	113	235
TA-3	very f.g., not rusty spotted hornfels.	50	8	64	132
TA-4	clean grey slate	10	10	96	750
TA-5	v.f.g., Mn stained hornfels	58	27	82	500
TA-6	spotted hornfels, minor visible pyrite	86	17	121	1550
TA-7	rusty, f.g. quartzite - hornfels zone	141	17	113	485
TA-8	black, coarse-grained impure quartzite	22	13	17	470
TA-9	rusty spotted hornfels	48	17	85	3250
TA-10	clean chert-argillite pebble conglomerate	62	5	50	183
TA-11	black chert	30	22	16	275
TA-12	very rotten, Mn stained, f.g. spotted hornfels	363	29	285	142



SOIL & SILT SAMPLE RESULT (Cu, Pb, Zn, ppm)