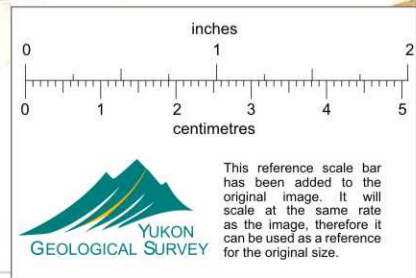


L01-4-466LMN

105 K-10 ZED CLAIMS

Air Photo	NW 72974-4-107	1" = 1360'
Air Photo	NW 72974-4-107	Grid Overlay
Air Photo	NW 72974-4-107	Lead Contours
Air Photo	NW 72974-4-107	Zinc Contours
Air Photo	NW 72974-4-107	Geology Overlay



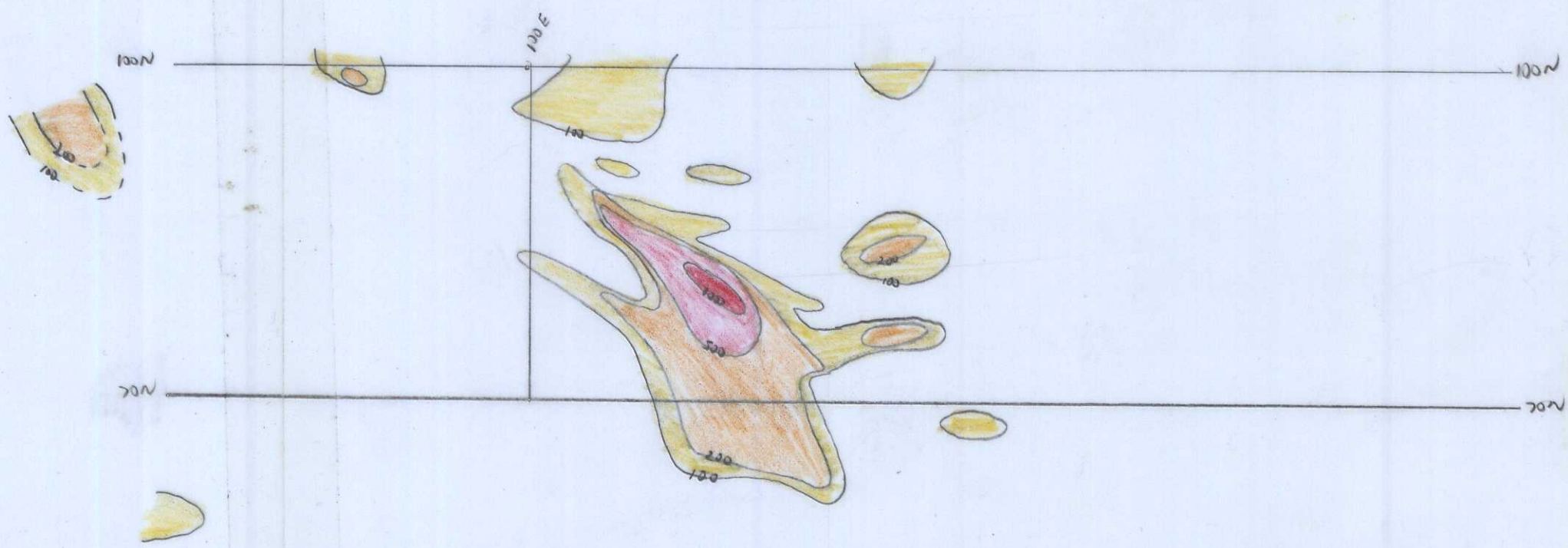
Zed Claims 105-K-10

011981



1" = 1360'

+



327

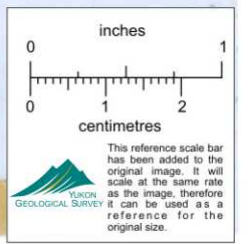


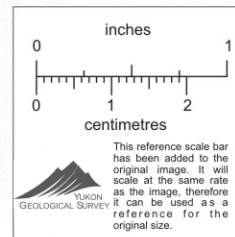
105-K-10

ZED CLAIMS

Lead  
1" = 1360'

+



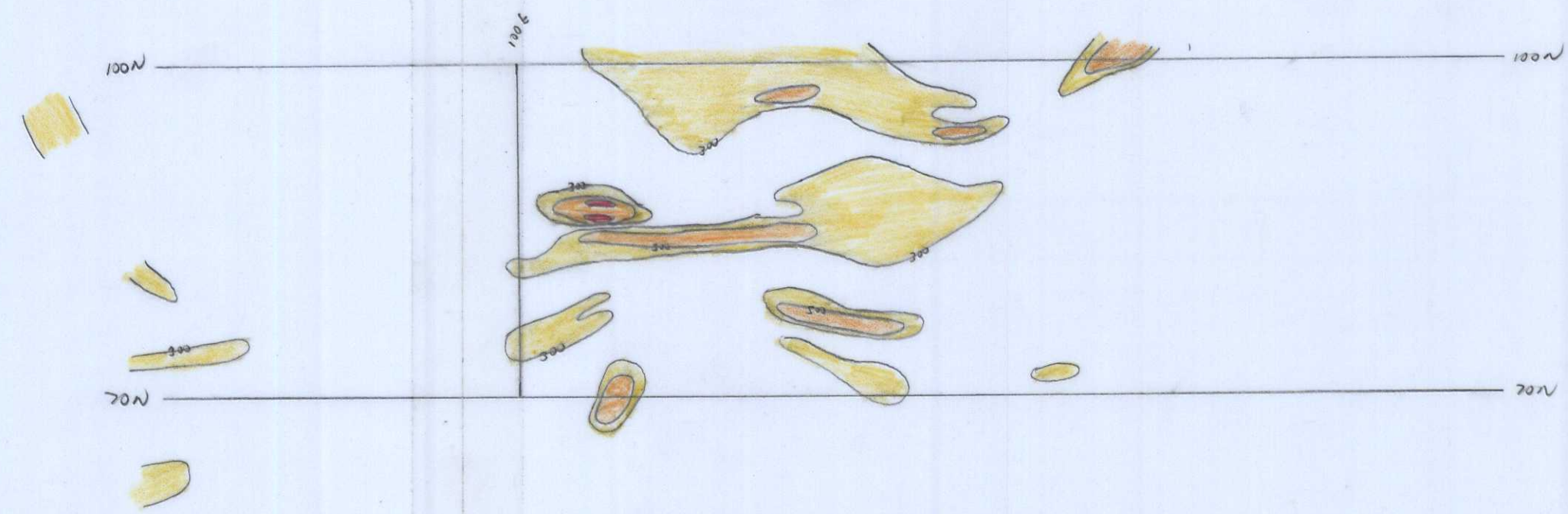


Zed Claims 105-K-10

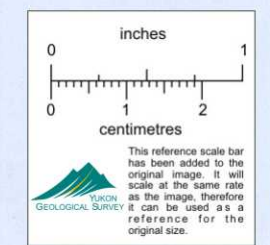
Plan of cut lines  
 overlay to photo blow-up  
 NW 72974-4-107

111.360'

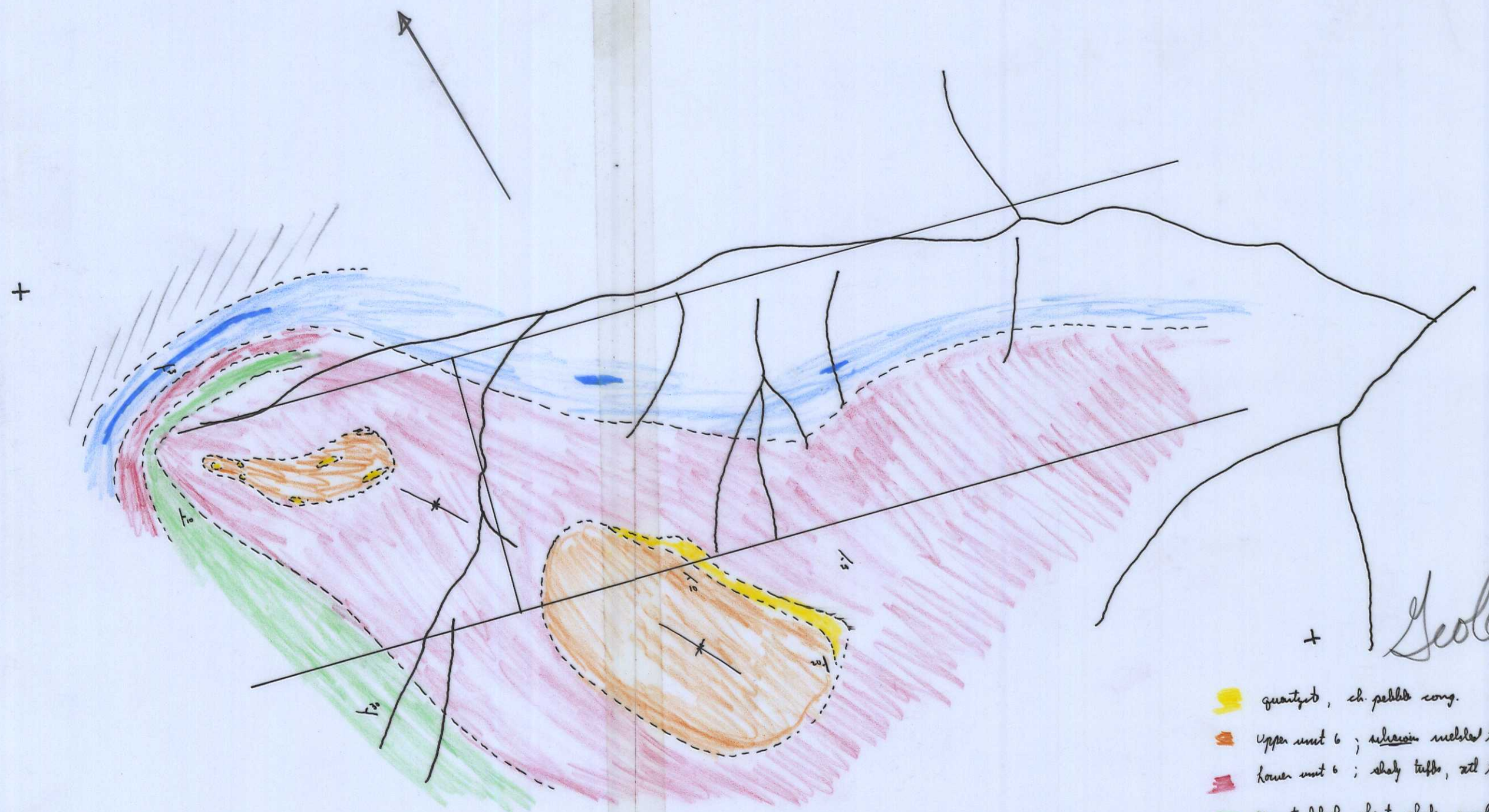
+



$$\begin{array}{r}
 1363 \\
 2.2 \overline{) 3000.0} \\
 \underline{2200} \phantom{0} \\
 800 \phantom{0} \\
 \underline{660} \phantom{0} \\
 140 \phantom{0} \\
 \underline{132} \phantom{0} \\
 80
 \end{array}$$

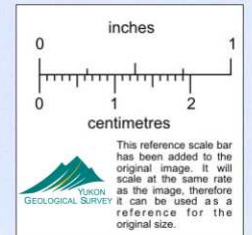


+  
ZED CLAIMS 105-16-10  
Zinc  
 1" = 1360'



+ Geology

- quartz, sh. pebbles cong.
- upper unit 6; schlieren interbedded tuffs, siltstone, felsite
- lower unit 6; shaly tuffs, sil tuffs, fragment tuffs, shales
- grey to black chert, shale, argillite
- interbedded limestone & shales ■ ls
- /// black cherty shales and dirty quartzites



105-K-10  
Zed Claims

1" = 1360'