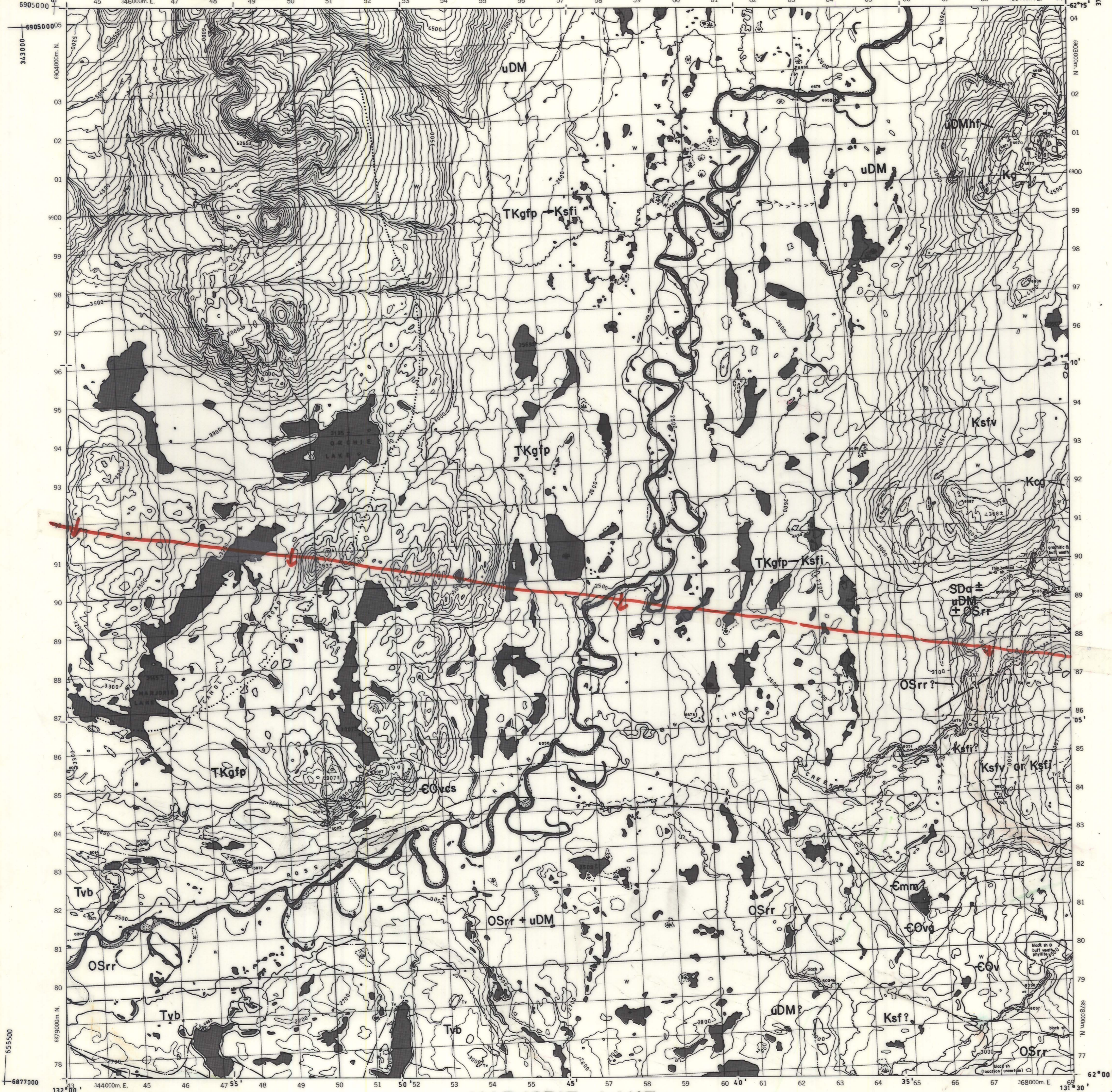


ADVANCE PRINT

CANADA

ÉPREUVE PRÉLIMINAIRE

105 J/4

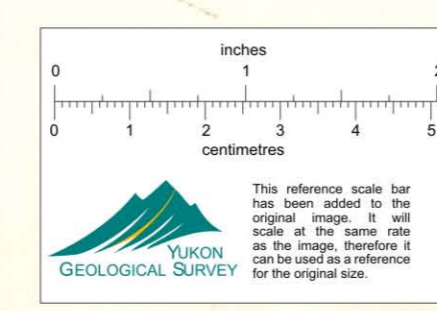


PRODUCED BY SURVEYS AND MAPPING BRANCH,
DEPARTMENT OF ENERGY, MINES AND RESOURCES,
OTTAWA, 1971. FROM PHOTOGRAPHS TAKEN IN 1968.
CONTOUR INTERVAL 100 FEET

MARJORIE LAKE
YUKON TERRITORY

SCALE 1:50,000 ÉCHELLE
1.25 inches to 1 mile approximately

ÉTABLIE PAR LA DIRECTION DES LEVÉS ET DE LA
CARTOGRAPHIE, MINISTÈRE DE L'ÉNERGIE, DES
MINES ET DES RESSOURCES, OTTAWA, EN 1971.
D'APRÈS DES PHOTOGRAPHIES PRISES EN 1968.
EQUIDISTANCE DES COURBES 100 PIEDS



CYPRUS ANVIL MINING CORPORATION	
GEOLOGICAL MAP	
REVISED:	NTS: 105-J-4
012016	DRAWN BY: ctc/rwr
	DATE: