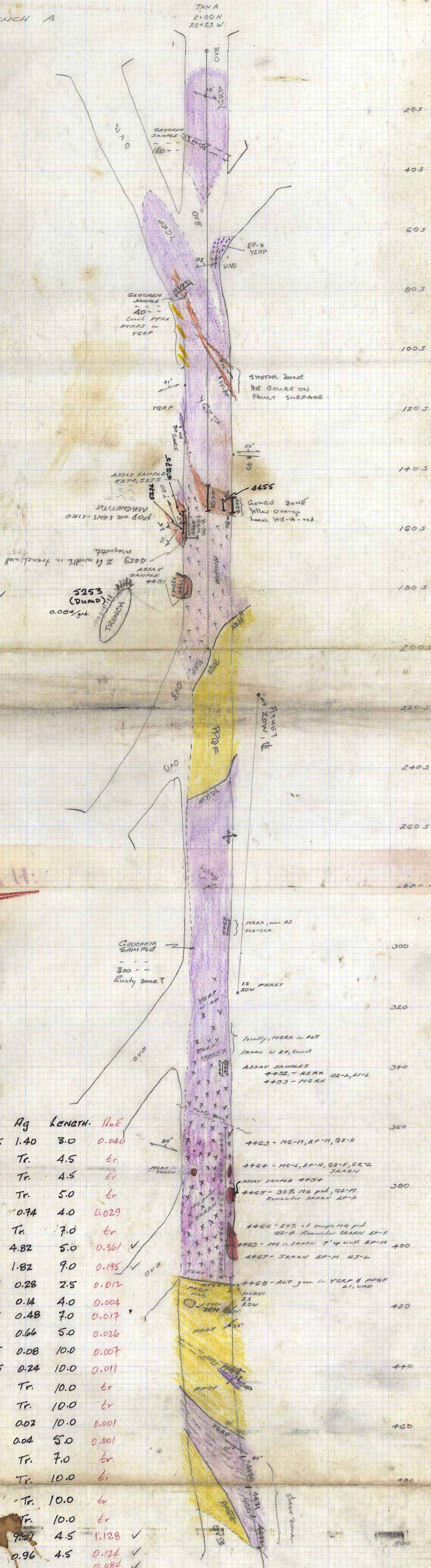


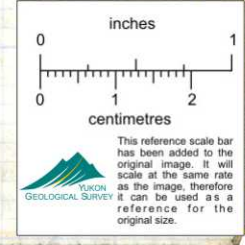
TRENCH A



No.	Au	Ag	LENGTH.	AuE
4451	0.005	1.40	3.0	0.040
4452	Tr.	Tr.	4.5	tr
4453	Tr.	Tr.	4.5	tr
4454	Tr.	Tr.	5.0	tr
4455	0.01	0.74	4.0	0.029
4456	Tr.	Tr.	7.0	tr
4457	0.24	4.82	5.0	0.361
4458	0.15	1.82	9.0	0.195
4459	0.005	0.28	2.5	0.012
4460	Tr.	0.14	4.0	0.004
4461	0.005	0.48	7.0	0.017
4462	0.01	0.66	5.0	0.026
4463	0.005	0.08	10.0	0.007
4464	0.005	0.24	10.0	0.011
4465	Tr.	Tr.	10.0	tr
4466	Tr.	Tr.	10.0	tr
4467	Tr.	0.02	10.0	0.001
4468	Tr.	0.04	5.0	0.001
4469	Tr.	Tr.	7.0	tr
4470	Tr.	Tr.	10.0	tr
4471	Tr.	Tr.	10.0	tr
4472	Tr.	Tr.	10.0	tr
5274	0.85	9.51	4.5	1.128 ✓
5275	0.11	0.96	4.5	0.134 ✓
5253	0.06	0.96	Grab dump.	0.084/grb ✓

$$\frac{AuE}{length.} = Au + \frac{Ag}{40}$$

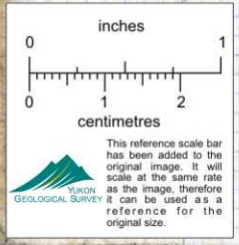
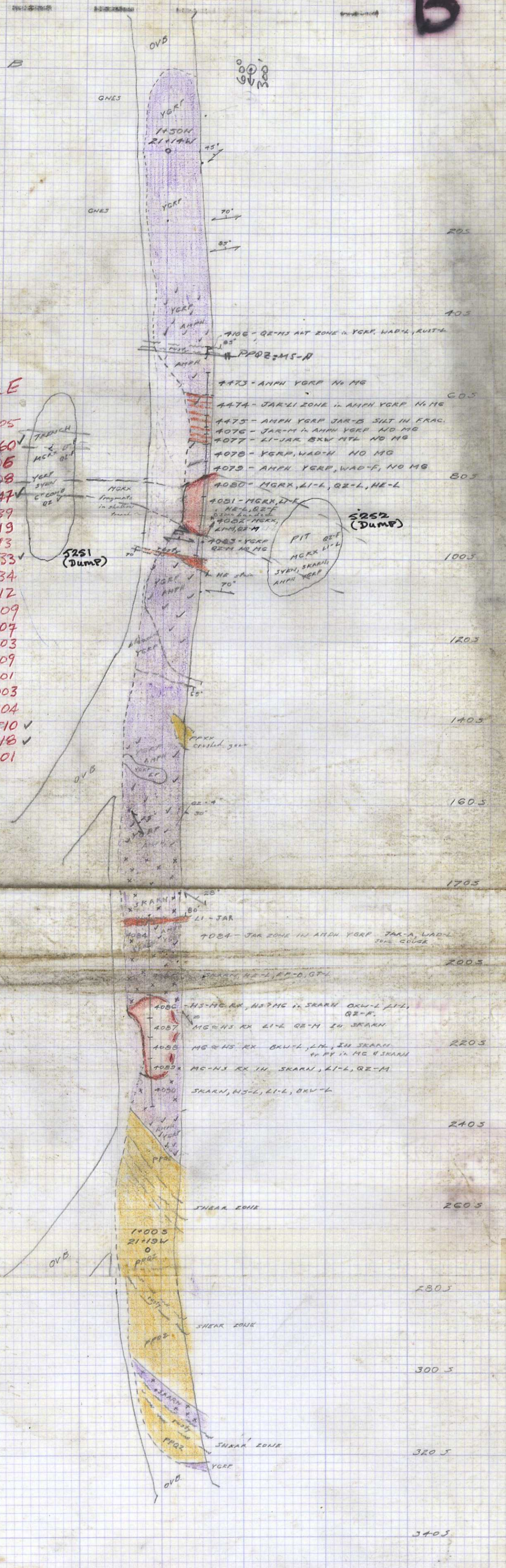
$$= 17u + (Ag \div 40)$$



B

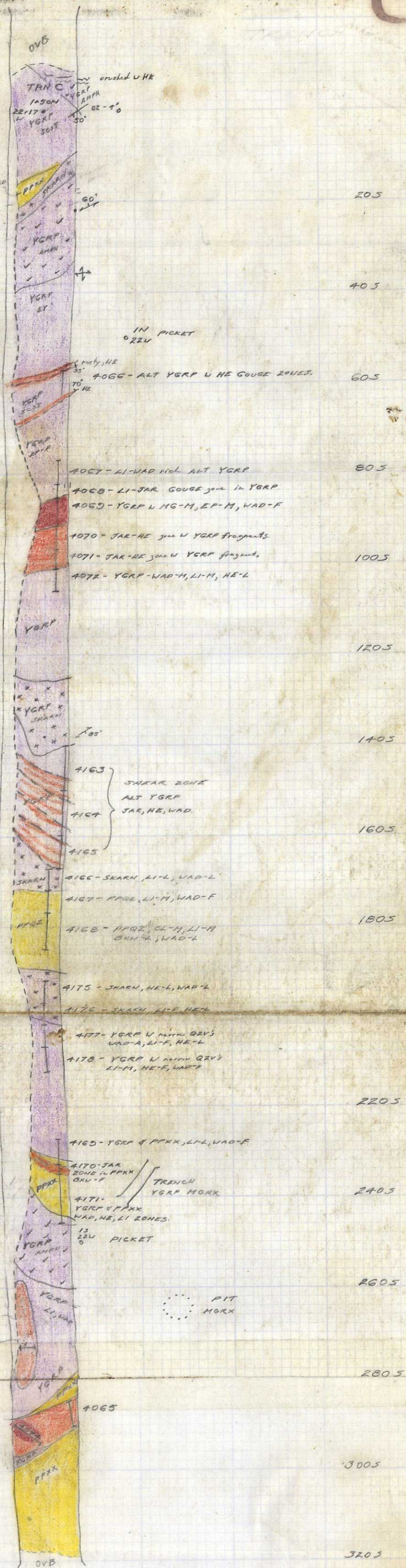
TRENCH B

No.	Fu	Ag.	LENATH.	AL/E
4473	Tr	0.20	5.4	0.005
4474	0.005	2.18	4.7	0.060
4475	Tr	0.22	3.0	0.006
4076	Tr	0.32	1.2	0.008
4077	0.01	1.46	3.5	0.047
4078	0.005	1.36	3.0	0.039
4079	0.005	0.56	3.4	0.019
4080	Tr	0.52	5.0	0.013
4081	0.18	10.12	5.0	0.433
4082	0.02	0.54	5.0	0.034
4083	0.005	0.28	5.0	0.012
4084	tr.	0.36	7.5	0.009
4085	tr.	0.26	12.5	0.007
4086	tr.	0.12	5.0	0.003
4087	tr.	0.36	5.0	0.009
4088	tr.	0.02	5.0	0.001
4089	tr.	0.10	5.0	0.003
4090	tr.	0.16	7.0	0.004
5251	0.50	0.40	Grab	0.510
5252	0.97	13.90	Grab	1.318
4106	Er	0.04	2.3	0.001



C

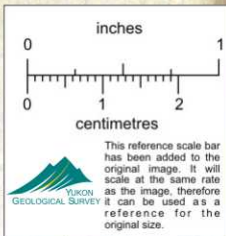
TRENCH C



No.	Au	Ag	Length	AuE
4065	tr	0.06	5.5'	0.002
4066	tr	0.10	7.0'	0.003
4067	tr	0.10	5.5'	0.003
4068	tr	0.12	3.0'	0.003
4069	0.05	3.51	6.0'	0.138 ✓
4070	0.005	0.06	5.0'	0.007
4071	0.005	0.16	7.5'	0.009
4072	tr	0.18	5.0'	0.005
4073	tr	0.06	3.7'	0.002
4074	0.08	0.04	6.0'	0.081 ✓

No.	Au	Ag	Length
4163	tr	tr	10.0' grab.
4164	tr	0.02	10.0' grab
4165	tr	0.08	7.0' grab
4166	tr	tr	5.0' chip
4167	0.005	0.10	5.0' "
4168	tr	0.02	5.0' "
4169	tr	0.08	8.0' "
4170	tr	0.12	5.5' dip.
4171	0.005	0.12	2.0' "
4172	tr	0.08	9.5' "
4173	tr	0.04	5.0' dip.
4174	tr	tr	5.0' "
4175	tr	0.12	5.0' "
4176	tr	0.08	5.0' "

No.	Au	Ag	Length	SKARN-LIKE ALT YGRP LI-JAR-HE-HE
4065	tr	0.06	5.5'	
4073	tr	0.06	3.7'	
4074	0.08	0.04	6.0'	



D

TRENCH D

No	Au	Ag	Length
823	tr	.08	7.0' panel
824	tr	tr	10.0' "
825	tr	tr	5.0' "
826	tr	tr	6.0' "



823 - RUSTY ZONE in IMPURE MARBLE CUT by QZV'S.

205

824 - RUSTY ZONE in PPOZ LI-F, WAD-L

405

825 - RUSTY ZONE in YGRP AMPH, QZ-F, LI-M

605

826 - RUSTY ZONE in YGRP AMPH, QZ-F, LI-F

805

1005

1205

1405

1605

1805

2005

4031 - YGRP, EP-F, GOUGE MTL w HE, WAD, EP

No.	Au	Ag	Length
821	tr	.06	1.0' grab
822	tr	.04	1.0' "

2205

No	Au	Ag	Length	Au/E
4091	tr	0.06	12.2'	0.002
4092	0.03	0.33	7.5'	0.038
4093	0.13	1.21	5.0'	0.160
4094	0.01	0.34	5.0'	0.019
4095	tr	0.08	4.0'	0.002
4096	tr	0.06	5.0'	0.002
4097	tr	0.46	7.0'	0.012
4098	0.005	0.32	3.0'	0.028
4099	0.02	3.62	7.0'	0.111

821 - HS-WAD ZONE in YGRP

2405

822 - JAR ZONE, HE-L, WAD-L

2605

4091 - JAR GOUGE ZONE in YGRP WAD-L, HE-L
 4092 - YGRP, WAD-F, LI-M, HE-L, BKW-L
 4093 - YGRP w HE-F, WAD-F, LI-F
 4094 - YGRP WAD-M, HE-F, LI-F

2805

4095 - PALE YELLOW LI GOUGE MTL in YGRP
 4096 - JAR GOUGE MTL in YGRP HE-L
 4097 - YGRP LI-M, WAD-F, HE-F, HK-L

3005

16 sl vuggy LI-L WAD-L quartzitic

817 - YGRP, WAD-M, LI-L, HE-L

3205

818 - HS, QZ, HE, LI, GQ RX vuggy QZV'S, LI-M, WAD-M

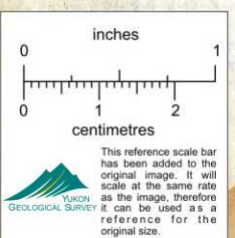
3405

820 - YGRP, CL-M, LI-L, WAD-F

3505

3805

No.	Au	Ag	Length
817	tr	tr	7.0' panel
818	.005	.34	5.0' "
819	.03	1.07	5.0' "
820	.005	.86	6.0' "



This reference scale bar has been added to the original image. It will scale at the same rate as the image, therefore it can be used as a reference for the original size.

TRN E
SHEET 2

E

TRN E

No.	Au	Ag	Length
374	tr	.06	10.0' panel
375	tr	.10	"
376	tr	tr	"

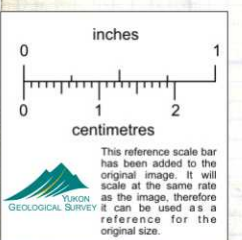
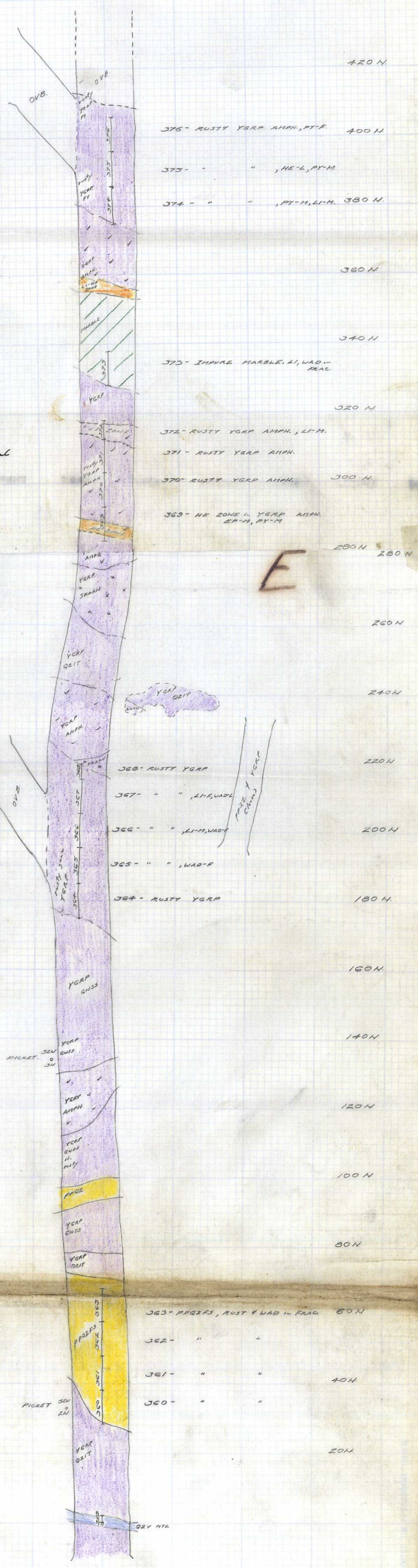
No.	Au	Ag	Length
369	.005	.10	10.0' panel
370	.005	.10	"
371	tr	.04	"
372	tr	.02	6.0' "
373	tr	.06	10.0' "

SHEET 1

E

No.	Au	Ag	Length
364	tr	.18	10.0' panel
365	tr	.08	"
366	tr	.02	"
367	tr	.06	"
368	tr	.06	6.0' "

No.	Au	Ag	Length
360	tr	.02	10.0' panel
361	tr	.12	"
362	tr	.02	"
363	tr	.12	"
359	.20	1.74	2.0' grab



TRENCH F

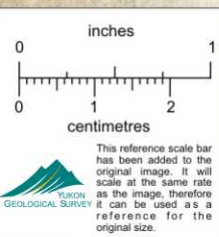
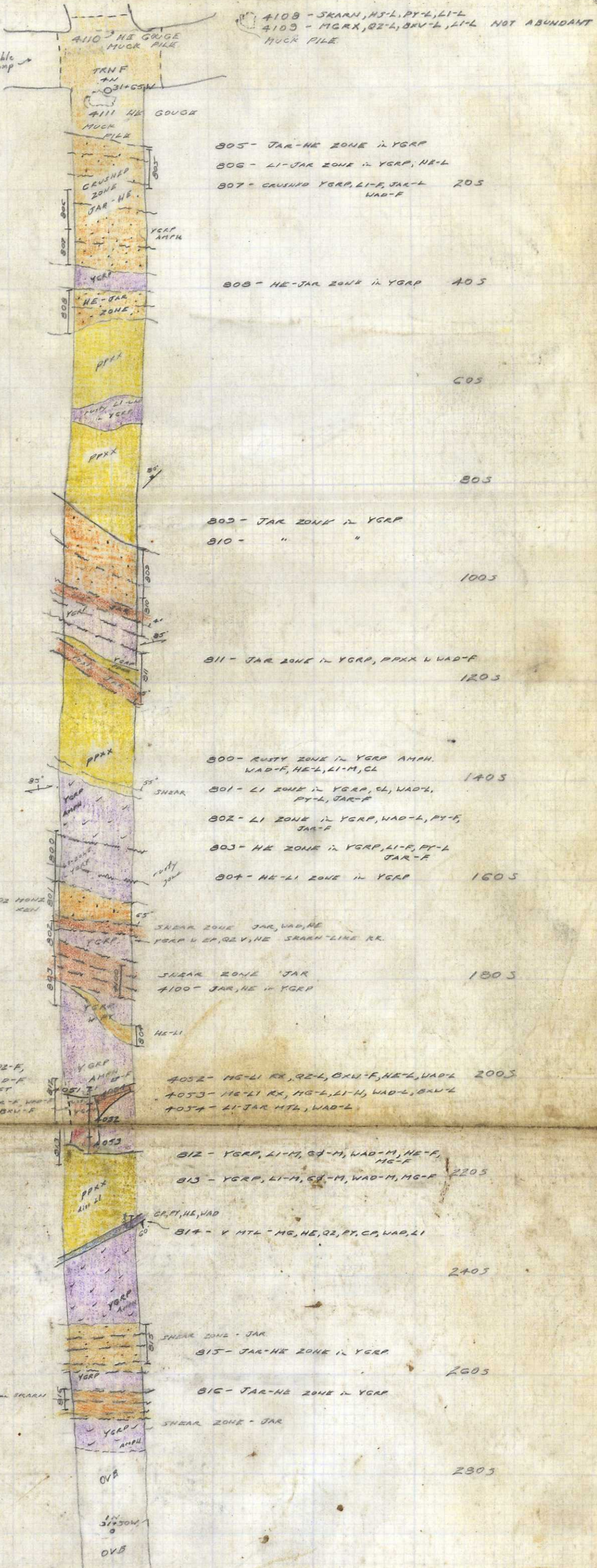
F

No.	Au	Ag	Length
805	tr	.12	8.0' channel
806	.01	.16	8.0' "
807	tr	tr	7.0' "
808	.005	.10	9.0' "

No	Au	Ag	Length
800	tr	.02	10.0' panel
801	tr	.12	8.0' "
802	tr	.14	7.0' "
803	tr	.08	10.0' "
804	tr	.02	4.0' "
809	tr	.04	10.0' channel
810	tr	tr	8.0' panel
811	tr	tr	10.0' channel

AuE	No.	Au	Ag	Length
0.002	4100	tr	0.06	7.0'
0.011	4051	tr	0.42	2.7'
0.051	4052	0.04	0.44	7.0'
0.085	4053	0.07	0.59	4.0'
0.119	4054	0.11	0.37	6.0'
0.012	4108	0.005	0.28	grab
tr	4109	tr	tr	grab
0.002	4110	tr	0.06	grab
tr	4111	tr	tr	grab

No.	Au	Ag	Length
812	.005	.06	10.0' channel
813	.01	.42	8.0' "
814	.005	.12	1.5' grab
815	tr	.06	8.0' channel
816	tr	.08	4.0' "

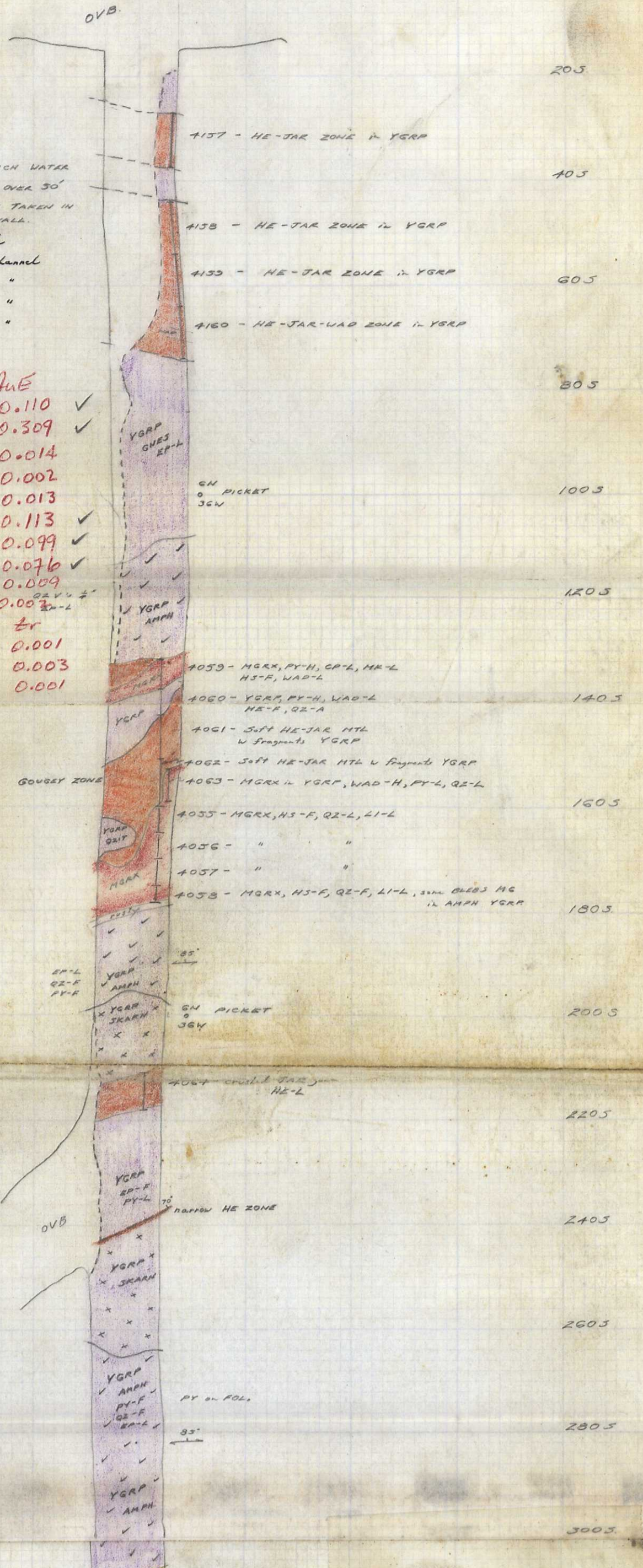


TRENCH G
Sheet 1

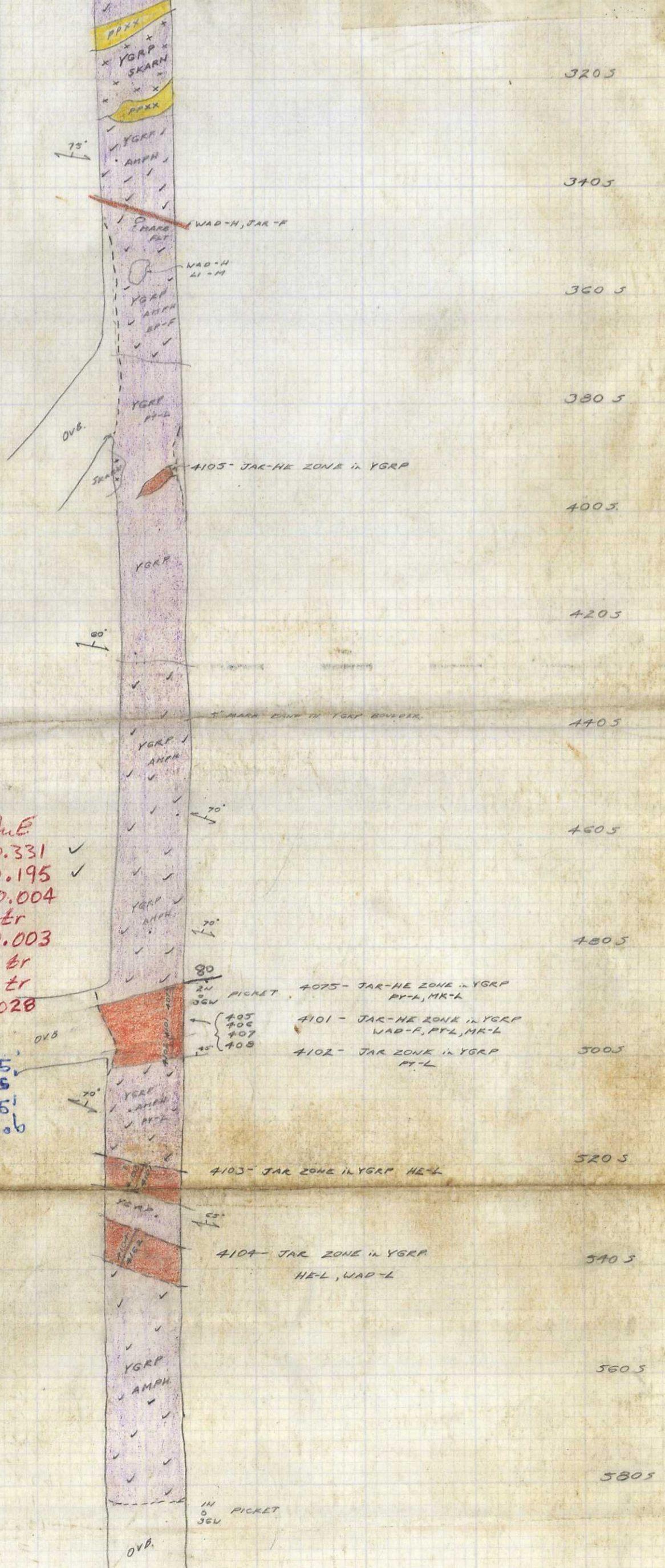
TRNG
7th PICKET
36W

No.	Au	Ag	Length
4157	tr	tr	10.0' channel
4158	tr	0.02	10.0' "
4159	tr	0.10	10.0' "
4160	tr	0.02	10.0' "

No.	Au	Ag	Length	AuE
4055	0.005	5.26	5.0'	0.110 ✓
4056	0.01	11.94	5.0'	0.309 ✓
4057	tr	0.56	5.0'	0.014
4058	tr	0.06	3.7'	0.002
4059	tr	0.53	5.8'	0.013
4060	0.02	3.72	5.0'	0.113 ✓
4061	0.04	2.36	8.8'	0.099 ✓
4062	0.01	2.64	9.0'	0.076 ✓
4063	tr	0.36	6.0'	0.009
4064	tr	0.06	7.0'	0.003
4157	tr	tr	10.0'	tr
4158	tr	0.02	10.0'	0.001
4159	tr	0.12	10.0'	0.003
4160	tr	0.02	10.0'	0.001

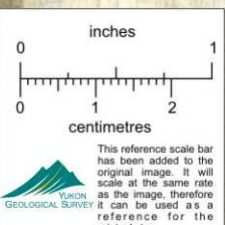


TRENCH G
Sheet 2



No.	Au	Ag	Length	AuE
4075	0.21	4.91	5.0'	0.331 ✓
4101	0.13	2.60	5.0'	0.195 ✓
4102	tr	0.17	3.5'	0.004
4103	tr	tr	6.0'	tr
4104	tr	0.12	7.0'	0.003
4161	tr	tr	6.0'	tr
4162	tr	tr	7.0'	tr
4105	0.02	0.32	2.0'	0.028

No.	Au	Ag	Cu
405	.08	4.12	.45
406	.33	4.55	1.43
407	.005	.10	.15
408	.36	4.54	.24



This reference scale bar has been added to the original image. It will scale as the image, therefore the original size can be used as a reference for the original size.

TRENCH H

Sheet 1

H

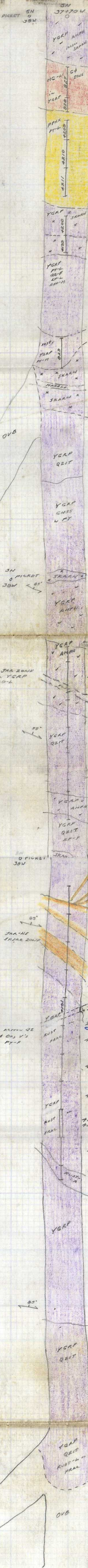
827	.01	.48	11.0' panel
828	tr	.08	5.0' "
No.	Au	Ag	Length
4209	tr	0.02	7.0' grab
4210	tr	tr	10.0' "
4211	tr	tr	10.0' "

4200	tr	tr	7.0' grab
4199	tr	0.14	6.0' "

No.	Au	Ag	Length
829	tr	.12	11.0' panel

No.	Au	Ag	Length
4179	0.005	0.22	6.0' grab
4180	tr	0.20	10.0' "
4181	tr	0.16	3.0' "
4182	tr	0.22	10.0' "
4183	tr	0.04	9.0' "
4184	tr	0.04	10.0' "
4185	0.005	0.44	4.0' "
4186	tr	tr	10.0' "

No.	Au	Ag	Length
4187	tr	tr	10.0' grab
4188	tr	0.08	"
4189	tr	0.10	"
4190	tr	0.06	"
4191	0.06	0.56	"
4192	0.005	0.12	"
4193	tr	0.02	"
4194	tr	tr	"
4195	tr	0.02	"
4196	tr	tr	"
4197	tr	0.06	"
4198	tr	0.06	"
2-4054	.22	2.04	2.0' grab



37170M
YGRP ANPH
JAR ZONE
G8 ZONE
827 - RUSTY ZONE in YGRP, WOOD QZ, 203
LI-F, G8-M, HC-L, PT-L

828 - RUSTY ZONE in YGRP,
HC-F, QZ-F, LI-F, G8-M,
WAD-F, PY-L

4209 - PPKX, RUST in FRAC.,
WAD-M, HE-L, PT-L 403

4210 - PPKX, RUST & WAD in FRAC.
PT-L

4211 - PPKX, RUST & WAD in FRAC.
PT-L 603

YGRP SKARN
4200 - RUSTY YGRP, WAD-L

4199 - H37MG in SKARN 803

YGRP
ANPH
1003

829 - RUSTY ZONE in YGRP, PY-M,
QZ-F, LI-L 1203

1403

1603

1803

2003

2203

YGRP ANPH
4179 - YGRP, WAD-F, PY-F, RUST-L

4180 - YGRP, WAD-F, PY-F, RUST-L 2403

4181 - RUSTY ZONE in YGRP

4182 - YGRP, RUST in FRACTURES

4183 - YGRP, RUST in FRACTURES 2603

4184 - YGRP, RUST in FRACTURES
CARB. V's, PY, WAD

4185 - YGRP, WAD-F, LI-B 2803

4186 - YGRP, RUST in FRACTURES
PY, QZ, ANPH. 3003

4187 - YGRP, RUST in FRAC., QZ veins,
JAR-F 3203

4188 - YGRP, RUST in FRAC., WAD-L,
LI-F, PY-L, CARB. V's, JAR-L 3403

4189 - YGRP, RUST in FRAC., LI-L,
CARB. V's, QZ, HE-L, JAR-F

4190 - YGRP, RUST in FRAC., WAD-L, QZ

4191 - YGRP, LI-B, WAD-F, QZ, CARB. V's
HK-F, PY, AS 3603

2-4054 - QZ HTL, LI-F, CA-F, loaded SU

4192 - YGRP, RUST in FRAC.

4193 - YGRP, RUST in FRAC. 3803

4194 - YGRP, RUST in FRAC.

4195 } - YGRP, RUST in FRAC. 4003

4196 }

4197 - YGRP, RUST in FRAC., WAD-F

4198 - YGRP, RUST in FRAC., WAD-L 4203

4403

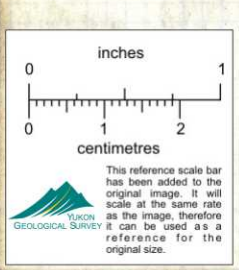
4603

4803

5003

5203

5403



TRN I
Sheet 1.

PICKET GN
0
40W

GN
0
30+84W

I

No.	Au	Ag	Length
4496	tr	tr	10.0' panel
4497	tr	.04	"
4498	tr	tr	"
4499	tr	.26	7.0' "
4500	tr	.04	10.0' "
301	tr	tr	"
302	tr	tr	"
303	.005	tr	7.0' "
304	tr	.24	5.0' "
305	tr	.32	"
306	tr	.16	"
307	tr	.30	"
308	tr	.28	"
309	tr	.08	"
310	tr	.18	"
311	tr	tr	"
312	tr	.08	"
313	tr	.06	"
314	tr	tr	"
315	tr	.02	10.0' "
316	tr	.10	7.0' "

PICKET 3W
0
40W



- 4496 - rusty YCRP, LI-F, QZ-V
- 4497 - rusty YCRP, LI-L, QZ-V, some SKARN
- 4498 - rusty YCRP, QZ-H, PY-H
- 4499 - rusty YCRP, QZ-H, PY-H
- 4500 - rusty YCRP, QZ-V, 1/2-3", PY-H
- 301 - QZIT, RUST - FRAC, PY-L
- 302 - rusty zone in SKARN, LI-H
- 303 - SKARN, HE in FRAC, EP-F
- 304 - MG-NS RX, QZ-F, CL, EP-L, LI-F
- 305 - MG-NS RX, QZ-F, LI-F, CL, EP-L
- 306 - MG-NS RX in SKARN, PY-F, LI-F, QZ-F, CL, EP-L
- 307 - MG-NS RX in SKARN, PY-H, QZ-H, LI-F, CL, EP-L
- 308 - MG-NS RX, CL-H, QZ-H, PY-F, LI-L
- 309 - SKARN, HE-L
- 310 - MG-NS RX in SKARN, PY-L, LI-L, EP-L
- 311 - MG-NS RX in SKARN, LI-L, PY-L, QZ-L, EP-L
- 312 - MG-NS RX in SKARN, LI-L, QZ-F, PY-L
- 313 - MG-NS RX in SKARN, PY-L, LI-L
- 314 - SKARN, LI-F, vuggy QZ-V, some QZIT
- 315 - PPXX, RUST-L in FRAC
- 316 - RUSTY ZONE in PPXX, JAR, HE, VAP

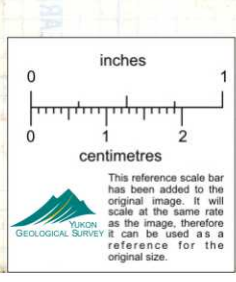
Sheet 2

No.	Au	Ag	Length
317	tr	.08	10.0' panel
318	tr	.02	"
319	tr	.10	"
320	tr	tr	"
321	tr	.02	"
322	tr	.10	"
323	tr	.10	5.0' "



- 317 - LI ZONE in YCRP, PY-A, HE-L, EP-L
- 318 - RUSTY ZONE in YCRP, PY-F, LI-F, VAP-L, HE-L
- 319 - RUSTY ZONE in YCRP SKARN, QZ-H, EP-F, HE-L, LI-F
- 320 - RUSTY ZONE in YCRP, LI-F, HE-L, VAP-L, QZ-F
- 321 - RUSTY ZONE in YCRP, LI-L, VAP-L, QZ-H, PY-L
- 322 - RUSTY ZONE in YCRP, LI-L, VAP-L, PY-L
- 323 - RUSTY ZONE in YCRP ANPH, LI-L, PY-L, VAP-L, QZ-F
- 324 - RUSTY YCRP, QZ-V, 1/2-4"
- 325 - RUSTY YCRP, QZ-V, 1/2-4", PY-L
- 326 - RUSTY YCRP, QZ-H, VAP-L, LI-F
- 327 - RUSTY YCRP
- 328 - RUSTY YCRP, LI-F, QZ-A, VAP-F
- 329 - RUSTY YCRP, QZ-H, LI-L
- 330 - RUSTY YCRP, CL-M, vuggy QZ-V, VAP-L, LI-L
- 331 - RUSTY YCRP, QZ-A, LI-L, VAP-L
- 332 - YCRP, LI-L, VAP-L, QZ-A, narrow, vuggy QZ-V, some filling
- 333 - YCRP, LI-L, VAP-L, CL, CY, narrow QZ-V
- 334 - YCRP, LI-L, VAP-L, CL, CY, narrow QZ-V

ALT YCRP
CL, CY, VAP, LI
vuggy QZ-V



This reference scale bar has been added to the original image. It will scale as the image, therefore it can be used as a reference for the original size.

TRENCH J

J

4220 - YGRP w PY, LI
HE-L
4221 - QZIT w NAD, LI
on fractures, HS-L

TRN J
3100N
46140W

3100N
PICKET
46100W

No	Au	Ag	Length
4220	tr	0.08	5.0' grab
4221	tr	0.06	6.0' "
4227	tr	0.06	10.0' "
4228	.005	0.22	10.0' "
4229	tr	0.06	10.0' "
4230	.01	0.10	10.0' "
4231	tr	0.16	5.0' "
4232	.005	0.28	10.0' "
4233	tr	tr	10.0' "
4234	tr	0.08	10.0' "
4235	tr	0.18	5.0' "
4236	tr	0.06	10.0' "
4237	tr	0.02	3.0' "
4238	tr	0.10	10.0' "
4239	.005	0.10	10.0' "



4227 - YGRP AMPH, RUST on FRAC
PY-M

4228 - YGRP AMPH, RUST-FRAC.
PY-M, QZ-F, EP-L

205

4229 - PPKX, RUST w FRAC

4230 - YGRP AMPH w EP-F,
LI-L, NS-L, PY-L

405

4231 - YGRP AMPH EP-F,
LI-L, PY-L, HE-F

4232 - YGRP AMPH, MG, PY-M,
LI-M, EP-F, PY-F

4233 - YGRP, 30% AMPH.
EP-L, PY-L

605

4234 - YGRP AMPH & PPKX,
QZ-F, MG, HE-L

4235 - SKARN, EP-F, HE-F

805

4236 - SKARN, EP-L, PY-F
30% AMPH balls

4237 - YGRP AMPH, PY-F

EP-L, QZ-F 1/3 - 1/4"

4238 - YGRP, RUST, AMPH,
QZ-F, EP-F, LI w FRAC.

1005

4239 - YGRP, EP-L

1205

1405

1605

1805

2005

2205

No	Au	Ag	Length
4212	tr	0.06	5.0' grab
4213	0.005	0.10	" "
4214	tr	0.04	" "
4215	tr	tr	" "
4216	tr	tr	" "
4217	tr	tr	" "
4218	tr	0.02	" "
4219	tr	0.02	" "

4212 - MGRX w SKARN, HS, wuggy QZ, LI

4213 - " " " "

2405

4214 - MGRX w YGRP AMPH, QZ, LI, HS

4215 - " " " "

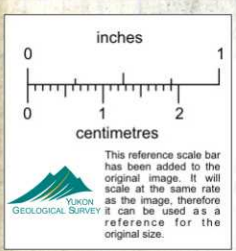
4216 - " " " "

2605

4217 - " " " "

4218 - " " " "

2805



3100N
46100W
PICKET
3005

TRENCH K
Sheet 1

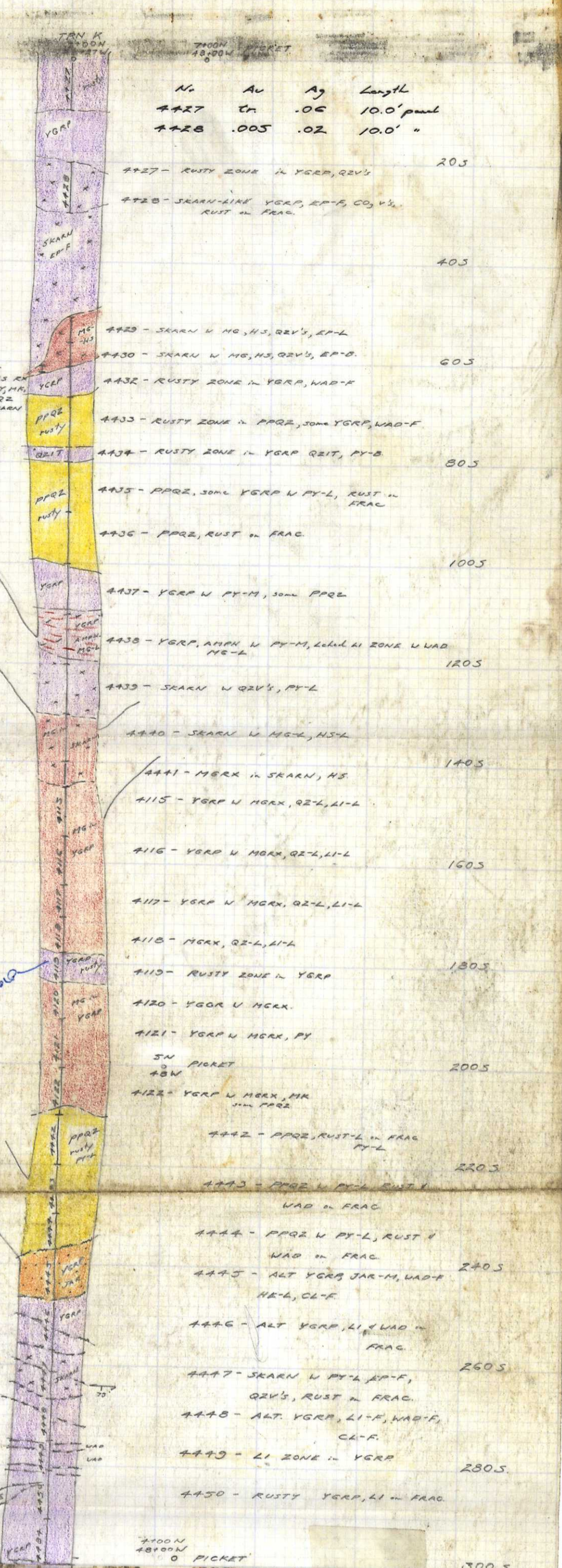
K

No.	Au	Ag	Length
4429	.005	.26	5.0' panel
4430	Er	.04	5.0' "
4431	.005	.80	1.5' grab
4432	Er	.06	6.0' panel
4433	.005	.02	10.0' "
4434	.005	.04	3.0' "
4435	Er	.06	10.0' "
4436	Er	.02	10.0' "
4437	Er	.02	10.0' "
4438	.005	.14	10.0' "
4439	.005	.02	10.0' "
4440	Er	.06	10.0' "
4441	.005	.08	5.0' "

AuE

No.	Au	Ag	Length	<i>AuE</i>
0.007	4115	Er	0.34	10' grab
0.001	4116	Er	0.02	10' grab
0.001	4117	Er	0.06	7' grab
0.103	4118	0.09	0.51	7' grab
0.355	4119	0.34	0.60	6' grab
	4120	Er	Er	7' grab
	4121	Er	0.22	10' grab
0.064	4122	0.06	0.16	10' grab

No.	Au	Ag	Length
4442	.005	.10	10.0' panel
4443	Er	.06	10.0' "
4444	Er	.04	7.0' "
4445	Er	.04	10.0' "
4446	Er	.08	10.0' "
4447	Er	.10	10.0' "
4448	Er	.06	8.0' "
4449	Er	.04	6.0' "
4450	Er	.10	10.0' "
4451	Er	.04	10.0' "



TRENCH K
Sheet 2

K

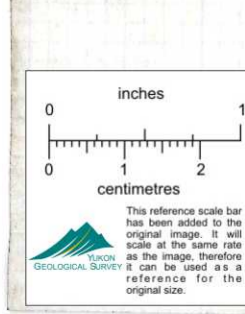
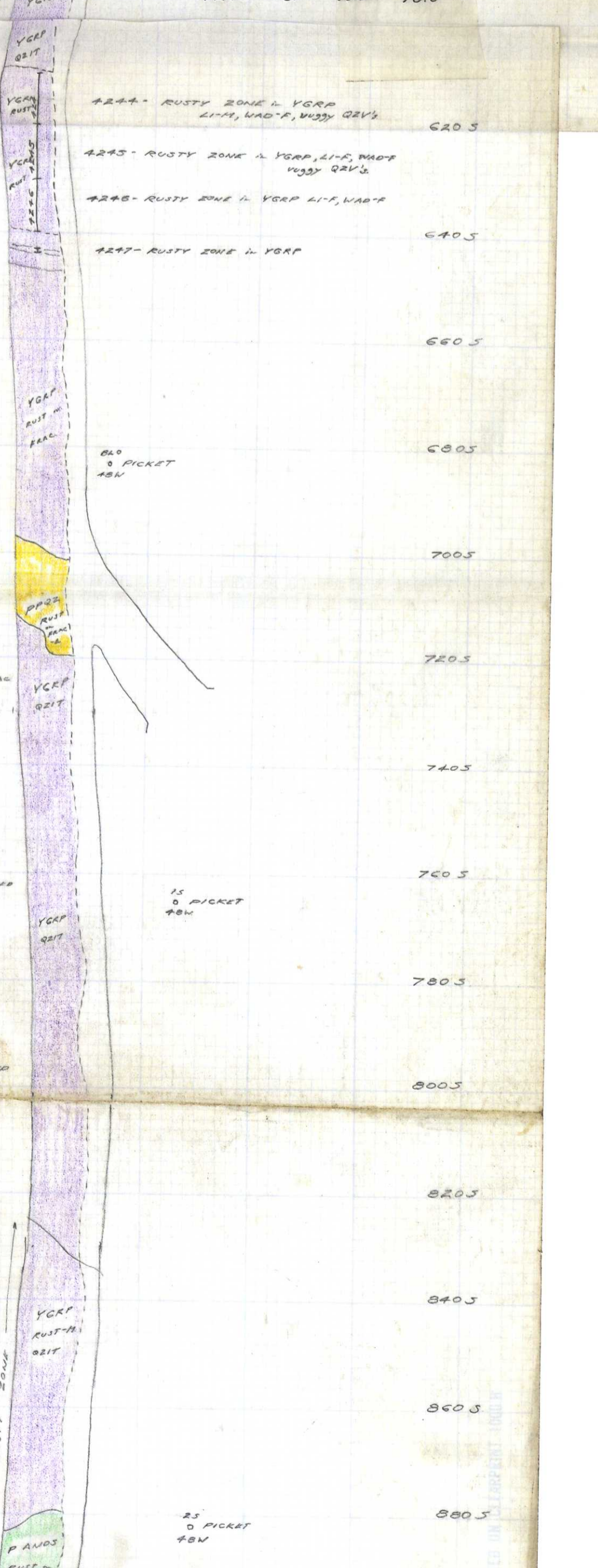
No.	Au	Ag	Length
4485	.005	.54	10.0' panel
4486	Er	.14	10.0' "
4487	Er	.06	10.0' "
4488	.005	.28	10.0' "
4489	Er	.14	10.0' "
4490	.005	.22	10.0' "
4491	Er	.16	10.0' "
4492	.005	.36	10.0' "
4493	Er	.06	10.0' "
4494	Er	.06	10.0' "
4495	Er	.12	10.0' "

No.	Au	Ag	Length	<i>AuE</i>
4123	0.02	8.84	10.0' grab	0.241 ✓
4124	Er	0.06	10.0' grab	0.002
4125	Er	0.08	10.0' grab	0.002
41251	0.005	0.16	10.0' "	0.009
4152	0.005	0.18	10.0' "	0.010
4153	Er	0.12	10.0' "	0.003
4154	Er	0.06	10.0' "	0.002
4155	Er	0.04	10.0' "	0.001
4156	Er	0.02	10.0' "	0.001
4240	Er	.02	10.0' grab	
4241	Er	.12	10.0' "	
4242	Er	.12	10.0' "	
4243	Er	.10	10.0' "	



SHEET 3

No.	Au	Ag	Length
4244	.05	3.77	10.0' panel
4245	.005	.10	10.0' "
4246	.005	.20	10.0' "
4247	.32	1.16	0.5' grab



TRN L
Sheet 2

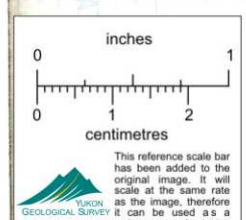
No.	Au	Ag	Length
337	Er	.04	10.0' panel
338	Er	Er	"
339	Er	.04	"
340	Er	.08	"
341	Er	Er	"
342	Er	Er	"
343	Er	.06	"
344	.005	.06	"
345	Er	.20	8.0' panel

No.	Au	Ag	Length
336	Er	.06	6.0' panel

No.	Au	Ag	Length
334	Er	.14	10.0' panel
335	Er	.10	7.0' "

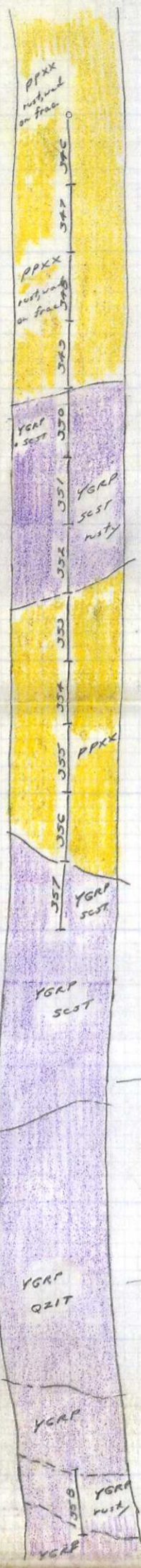
No.	Au	Ag	Length
330	Er	Er	10.0' panel
331	Er	Er	"
332	Er	Er	"
333	.005	.20	7.0' "

No.	Au	Ag	Length
4248	.005	.10	9.0' channel
4249	Er	.14	10.0' "
4250	Er	.12	4.0' "



TRN P

52W
PICKET
15



- 346 - PPXX, RUST & WAD on FRAC. 205
- 347 - PPXX, RUST & WAD on FRAC., LI on FRAC. 205
- 348 - PPXX, RUST & WAD on FRAC, CL-F
- 349 - PPXX, RUST on FRAC., CL-M 405
- 350 - YGRP SCST, RUSTY, LI-F, vuggy LI-QZV's
- 351 - YGRP SCST, RUSTY, narrow LI-QZV's 605
- 352 - RUSTY YGRP, LI-M, WAD-F, narrow, vuggy LI-QZV's
- 353 - PPXX & RUST & WAD on FRAC., vuggy LI-QZV's, label SW miss. 805
- 354 - PPXX & RUST & WAD on FRAC., CL, vuggy LI-QZV's, label SW miss.
- 355 - PPXX & RUST & WAD on FRAC., vuggy LI-QZV's, CL 1005
- 356 - " " "
- 357 - YGRP SCST, RUSTY, LI-QZV's, WAD-F 1205
- 1405
- 1605
- 1805
- 2005
- 358 - RUSTY ZONE in YGRP PY-F, HE-L, EP-F, vuggy LI-QZV's.

P

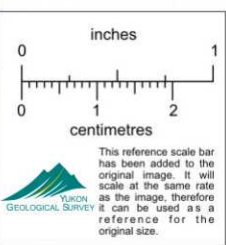
No.	Au	Ag	Length
346	tr	.02	10.0' panel
347	tr	.06	"
348	.005	.02	"
349	tr	.06	"
350	tr	.10	"
351	tr	.10	"
352	.005	tr	"
353	tr	.10	"
354	tr	tr	"
355	tr	.10	"
356	tr	.06	"
357	.005	.06	"

PICKET 52W
25

ROAD

PICKET 52W
35

No.	Au	Ag	Length
358	tr	.02	10.0' panel



PRINTED ON CLEARPRINT - 100% H

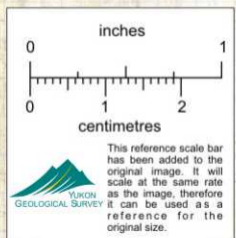
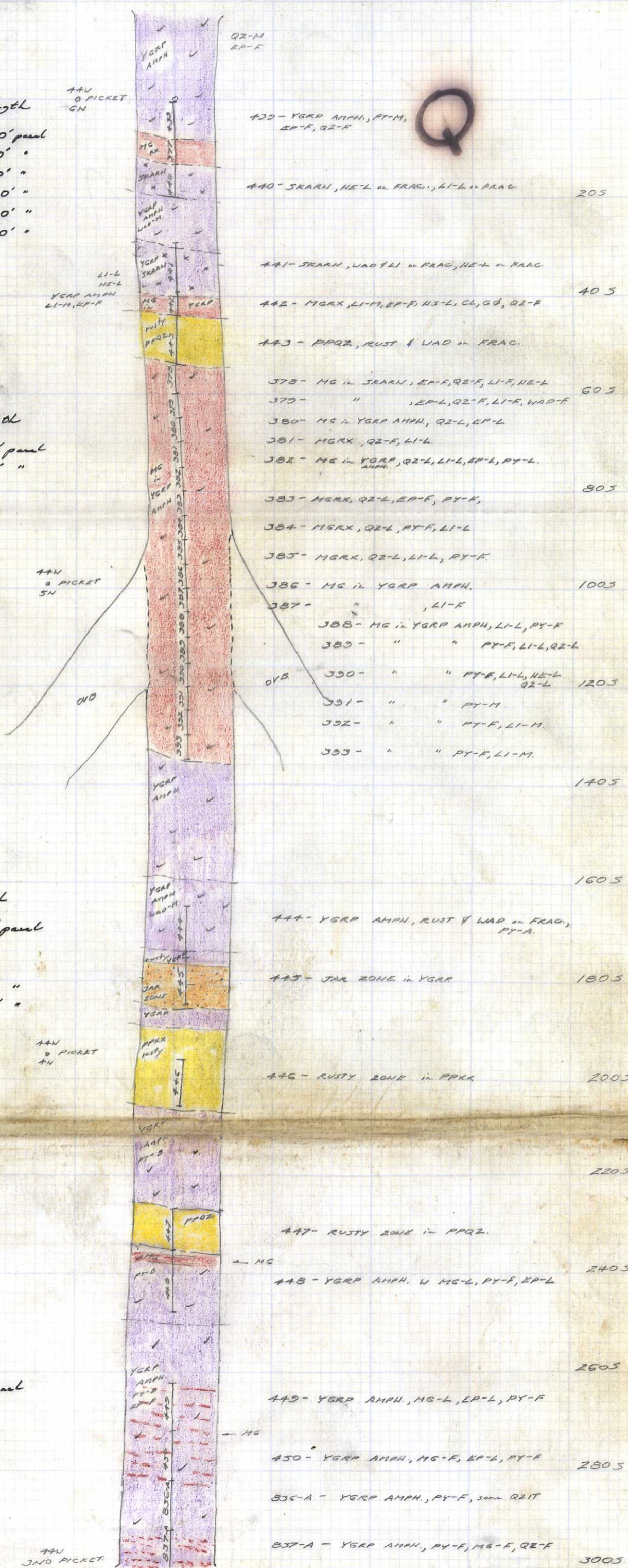
TRN Q

No	Au	Ag	Length
377	tr	.06	5.0' panel
439	tr	.10	8.0' "
440	tr	.04	6.0' "
441	tr	.08	10.0' "
442	tr	.14	5.0' "
443	tr	.04	10.0' "

No	Au	Ag	Length
378	tr	.04	6.0' panel
379	tr	.04	5.0' "
380	tr	.06	"
381	tr	tr	"
382	tr	.20	"
383	tr	.28	"
384	tr	.20	"
385	tr	.08	"
386	tr	.10	"
387	tr	.12	"
388	tr	.16	"
389	tr	.06	"
390	tr	.12	"
391	tr	.02	"
392	tr	tr	"
393	tr	.02	"

No.	Au	Ag	Length
444	tr	.04	10.0' panel
445	tr	tr	"
446	tr	.02	"
447	tr	tr	7.0' "
448	.005	.08	13.0' "

No.	Au	Ag	Length
449	tr	.06	10.0' panel
450	tr	tr	"
837-A	tr	.12	"
837-A	tr	.22	"



TRN R

No	Au	Ag	Length
428	tr	.02	10.0' panel
394	tr	.28	11.0' "
395	tr	.32	10.0' "

No	Au	Ag	Length
396	tr	.10	12.0' panel
397	.005	.38	10.0' "
398	tr	.50	5.0' "
399	tr	.24	"
400	tr	.20	"
425	tr	.20	"
426	tr	.20	"
427	tr	.08	10.0' "
429	tr	.10	"

No	Au	Ag	Length
430	tr	.06	10.0' panel
431	tr	.12	8.0' "
432	tr	tr	11.0' "
433	tr	.02	4.0' "
434	tr	.02	10.0' "
435	tr	.02	"
436	tr	.02	8.0' "
437	tr	.10	"
438	tr	.08	10.0' "



42W
0 PICKET
6N

428- RUSTY YGRP, EP-L

394- MG in YGRP, LI-M, PY-L 205

LI-A

395- MG in YGRP, PY-L, HE-L, QZ-L 405

405

396- MG in YGRP AMPH, EP-F, LI-L, NS 605

397- MG in YGRP AMPH, QZ-F, LI-L, PY-L, NS 805

398- " " , LI-F, PY-L, QZ-L, NS

399- " " , QZ-L, LI-L, PY-L, NS

400- " " , LI-L, PY-L, NS

42W PICKET
5N

425- MG in YGRP AMPH, EP-F, QZ-L, LI-F, PY-L

426- " " , LI-L, PY-L, QZ-L

427- " " , QZ-L, PY-L, LI-L, EP-F 1205

429- RUSTY YGRP 1405

1605

1805

430- JAR HE ZONE in YGRP with MG

42W PICKET
7N

431- JAR HE ZONE in YGRP

432- YGRP AMPH, WAD-A, LI-F, HE-L

433- MGRX, NS-F, LI-F, QZ-B. 2205

434- YGRP, HE-M, K.F.S.

435- RUSTY YGRP, HE-L, LI-F

436- YGRP & MG, QZ-F, WAD-M, NS-L 2405

437- MGRX in YGRP, WAD-M, QZ-F, LI-F, NS-L

438- YGRP AMPH, QZ-M, PY-P, MG-L 2605

2805

42W PICKET
3N

3005

3205

3405

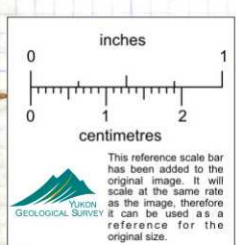
3605

3805

4005

4205

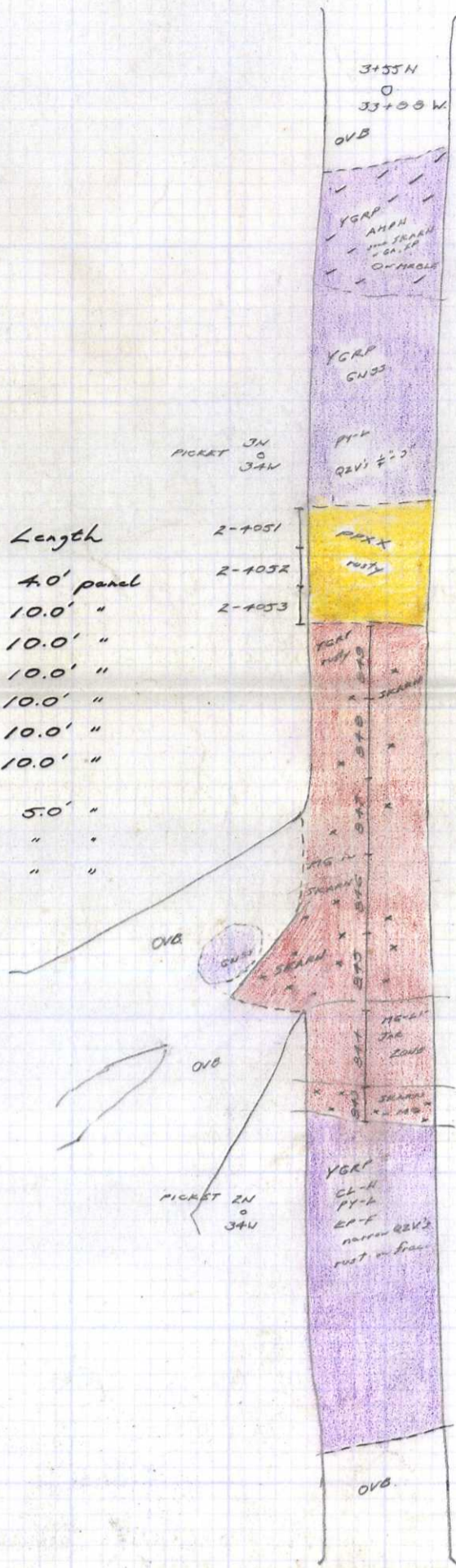
R



TRN 5

S

No	Au	Ag	Length
843	tr	0.20	4.0' panel
844	.01	.52	10.0' "
845	tr	.10	10.0' "
846	tr	.08	10.0' "
847	tr	.10	10.0' "
848	tr	.24	10.0' "
849	.02	5.24	10.0' "
2-4051	.005	.12	5.0' "
2-4052	.01	.18	" "
2-4053	.01	.16	" "



3+55N
 33+00W
 OVB

YGRP
 AMON
 SKARN
 CA-EP
 O-HOLE

205

YGRP
 GUS

405

PICKET 3N
 34V

PPXX
 LI-H

2-4051 }
 2-4052 }
 2-4053 }

605

843 - SKARN, narrow ZONES of
 LI-CO₂ RX, MG-L, some
 CL YGRP & PY-F, HE-L

805

848 - SKARN w MG-F, narrow ZONES
 of LI-WAD RX w MG, some YGRP
 & PY-F

847 - MG in SKARN, ACT-H,
 QZ-M, LI-F, WAD-F

1005

846 - MG in SKARN, LI-L, HE-L,
 QZ-M, ACT-H, CP-L (in veinlets),
 CO₂ V's, Ided QZ-LI V's

845 - MG in SKARN, ACT-H, LI-L,
 QZ-F, HE-L, WAD-L, CO₂ V's-L,
 EP-L

1205

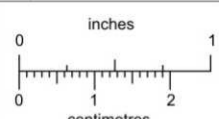
844 - MG-LI RX, QZ-L, WAD-F,
 HS-F, HE-L, CO₂ V's, JAR-F

849 - MG-HS-QZ RX, LI-F, PY-F
 in SKARN

1405

1605

1805



This reference scale bar has been added to the original image. It will scale at the same rate as the image, therefore it can be used as a reference for the original size.

TRN T

T

3+23N
0
35+40

OVB

205

YGRP
QE stringers
PY-F
HAPS-A

405

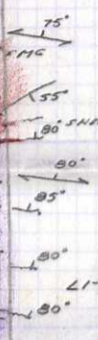
YGRP

605

No	Au	A _g	Length
840	.18	8.16	7.0' channel
841	tr	.06	3.0' chip
842	.005	.10	7.0' "

OVB

JAR-NE ZONE
in YGRP



840 - MG-JAR-NE ZONE in YGRP
incl QZV, MTL, LI, ACT, WAD-F

841 - FRAC. ZONE in YGRP, LI & WAD
in FRAC., HS-F, QZ-H.

805

YGRP
HAPS-H
LI in FRAC.

842 - FRAC. ZONE in YGRP, LI-F, WAD-F, HE-L,
PY-L, QZV's $\frac{1}{2}$ " - $\frac{1}{2}$ "

LI-NE-PY in SHEARED YGRP

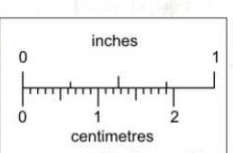
1005

YGRP
HAPS-H
incl QZ stringers
LI-F in FRAC
Zn
0
35+40N

1205

OVB

1405



This reference scale bar has been added to the original image. It will scale at the same rate as the image, therefore it can be used as a reference for the original size.

TRN U

U

No	AU	A ₂	Length
835	tr	.14	10.0' dip
836	1.22	25.82	3.7' "
837	.01	.30	5.0' "
838	tr	.22	10.0' "
839	.005	.22	10.0' "
Z-4055	tr	.12	10.0' "

