

115
Wms. C. -
Murrell ch.

ATLAS EXPLORATIONS LIMITED

012202

330 MARINE BUILDING
355 BURRARD STREET
VANCOUVER 1, B.C.

Box 3050,
Whitehorse, Y.T.

September 12, 1970

Mrs. Ida May Goulter,
Carmacks, Y.T.

Dear Mrs. Goulter:

I am just on the point of leaving Whitehorse for the season and unfortunately have been unable to get back to Carmacks.

I am enclosing the copy of Cairnes' report which you lent me. Also, I am sending along a copy of the geo-chemical analysis on the sample which Frank gave me.

Thank you very much for your help; I shall probably be back in Yukon next spring and will drop in to see you when I am next in Carmacks.

Yours sincerely,

ATLAS EXPLORATIONS LIMITED

(for) M.E. (Tim) Coates, P.Eng.

Encls.
MEC:js

offer, Goulter, I. M. and. C. F. -

Package deal for minimal claims.
for one cash price. a reasonable one with shares.
make offer uninterested.

7-21. year leases situated on Discovery Pys
creeks and Tija, - willow side creeks run over
Idamay. - Elyza creek runs through. Sunset
Mack. Sunset runs up Tija creek. where the
original gold discovery was. names. Sunset.
Mack. - Recco. - Idamay. - Hazel Annet
Myrtle. - Cortlandt. - Macrecaur. gold to
over 3% nuggets Macrecaur coarse gold. with tungsten
tin stones. Silver galena chunks. Hundred of lbs.
- 30000

10. titles Crown grants. 2 extra large about
equal to area covered 13 regular area. all
one line - claims situated. Merritt,
Nancy Lee. Williams creeks ^{named for Dennis Merritt}

macks copper

1. Crown grant. Hazel may. lot. 20 groups 10
the 200 foot vein that is on Bonanza. m.s. runs thro
Hazel may. Richard Nusca States. 2-10 feet
veins on Hazel may. - More copper old acid.
and 63% S. Palente near grants. But not Stated

Also I shall let you
know and show maps and
reports of local measures
upper and lower Housens
at least 3. (or more)

ATLAS EXPLORATIONS LIMITED

330 MARINE BUILDING
355 BURRARD STREET
VANCOUVER 1, B.C.

PROPERTY EXAMINATION

I. GOULTER CROWN GRANTS

115-I-7

SUMMARY

The mineralization on the Goulter Grants appears to be confined to an echelon arranged lenses of quartz which are localized at the contact between Cretaceous (?) granites and the older Mount Nansen volcanics. Minor amounts of copper occur along foliation planes in the granite near the contact.

CONCLUSIONS

It does not seem likely that the showings examined are of immediate economic importance. The zone is too narrow and the mineralization sporadic.

RECOMMENDATIONS

No further work should be done in the area in the absence of encouraging results from the geochemical samples.

INTRODUCTION

The Crown Grants were examined at the request of Mrs. Ida Gouldes of Carmacks. Two days were spent in the area.

LOCATION

The Grants are located in the YUKON Crossing area approximately 1 mile south of Yukon River at Williams and Merrice Creeks. (see location map).

ACCESS

Access is from Carmacks by helicopter - a distance of approximately 25 miles. An old telegraph line which can be picked up at Yukon

ACCESS (contd.)

Crossing, passes close by the property (a distance of about 6 miles from Yukon Crossing).

PROPERTY AND OWNERSHIP

The 10 Crown-granted Mineral Claims are held by C.F.G. Goulter of Carmacks, Yukon. The claims were first staked in 1907.

TOPOGRAPHY

The area is mountainous with local relief in excess of 1000 feet. The lower slopes are clothed with a heavy growth of scrub, spruce, alder and poplar but ridges are barren.

HISTORY OF THE OCCURRENCE

Most of the work carried out on the property was done between 1907 and 1913. Two adits and one shaft were driven on the east side of Nancy Lee Creek, about 1000 feet from the mouth. The area was visited by Bostock in 1935.

GENERAL GEOLOGY

The country rocks in the area belong to the Mount Nansen Group of Jurassic (?) Age. These rocks are dominantly basalt and andesite flows with lesser amounts of breccia and tuff. These rocks have been intruded by granitic rock along a zone which trends northwest parallel to the Yukon River. The mineralization appears to be confined to this zone.

MINERALIZATION

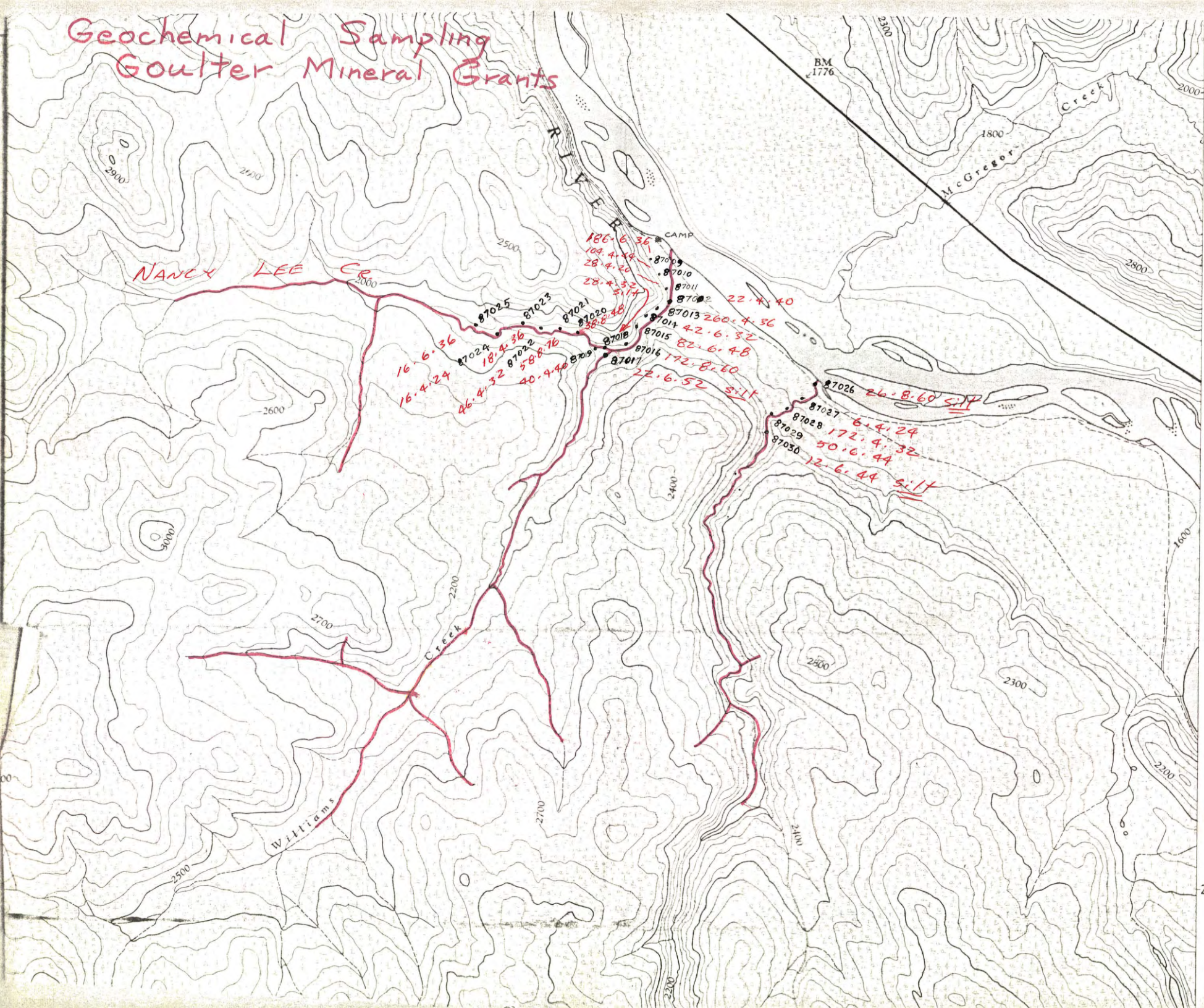
The showings are confined to quartz lenses in the contact zone between the Mount Nansen Volcanics and Cretaceous granites. (see attached Appendix G.S.C. 1965).

COMMENTS

The area seems to have had its heyday at about 1910. There are still remains of the old mine operation lying around (two ore carts, pieces of railroad rail, moils, etc.)

M.E. Coates
August 1, 1970

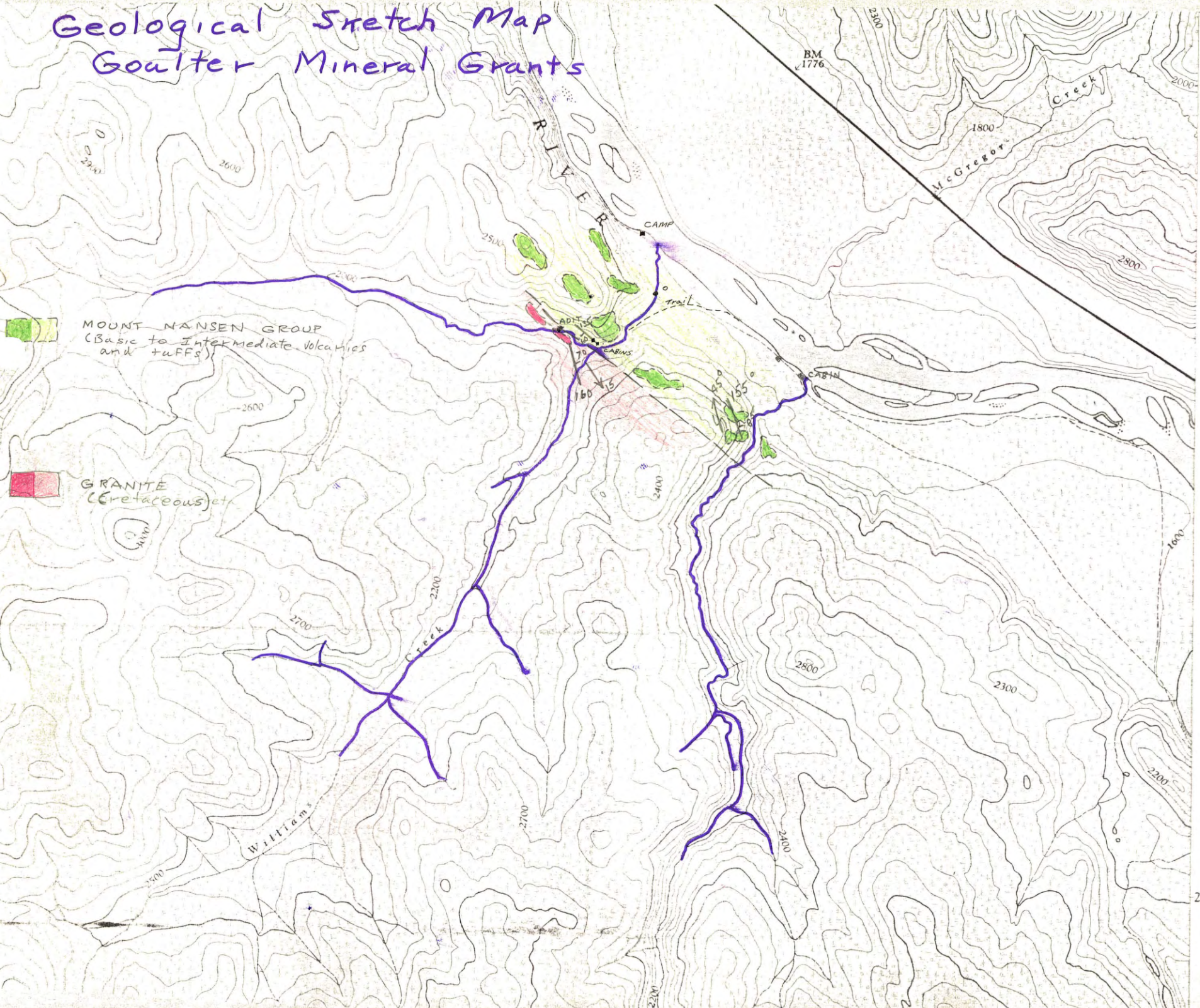
Geochemical Sampling Goulter Mineral Grants



Carnacks 22 m

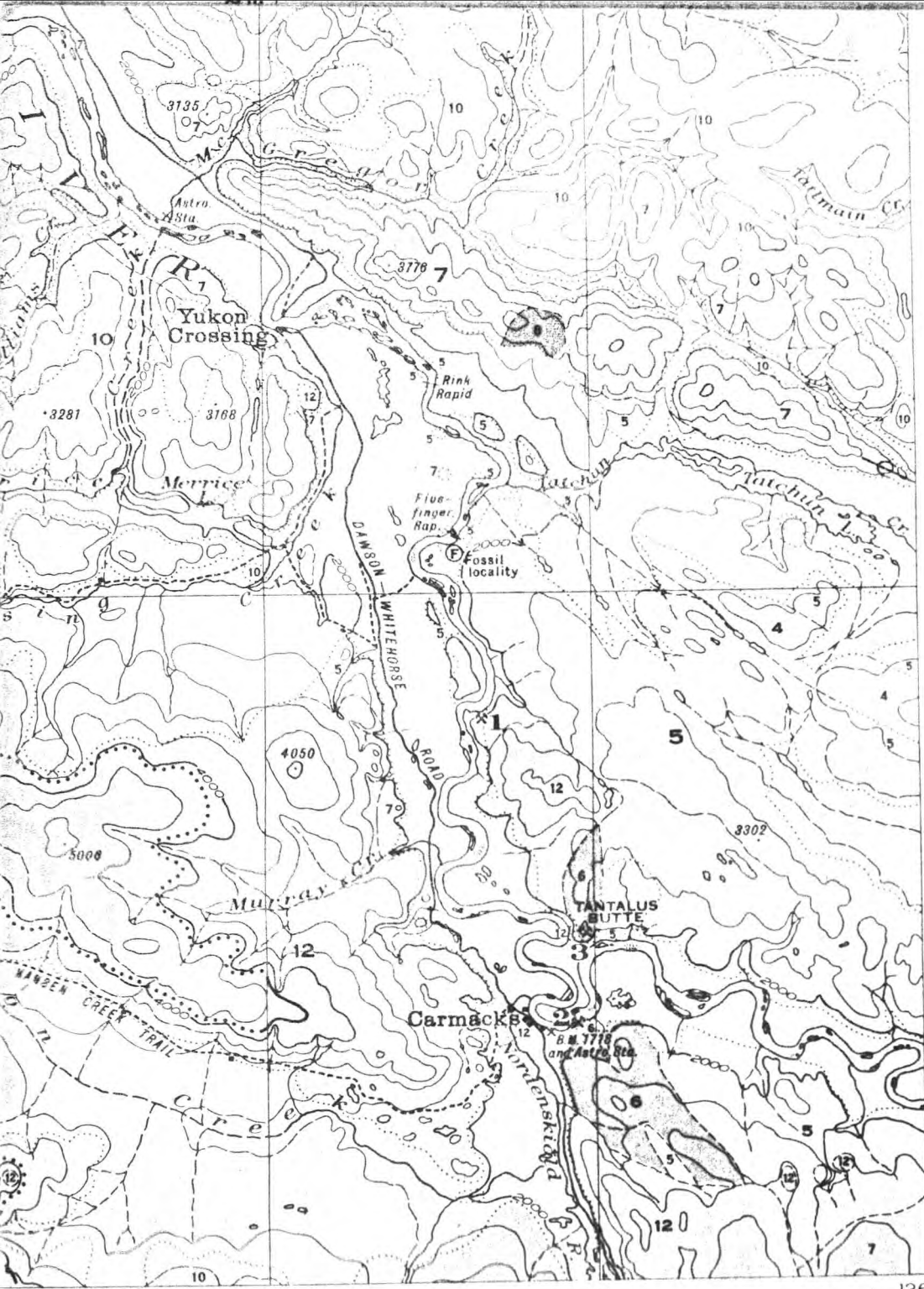
20'

Geological Sketch Map Goulter Mineral Grants

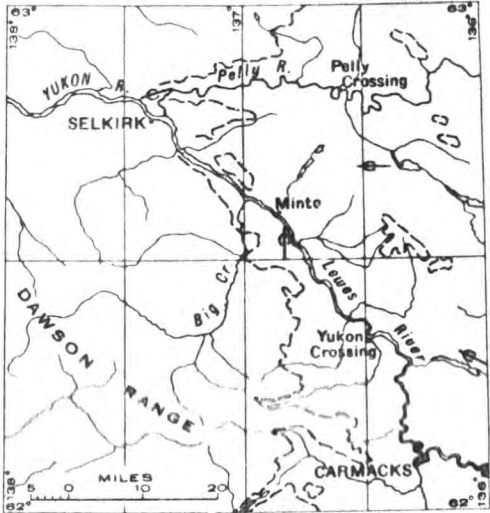


Carmacks 22 m

20'



See Campbell's rept.
 Bill Dunn has
 Brown - McEach
 file
 - Dave Miller -
 Shows on alteration
 Johnnie Lake?
 1946
 MSc thesis on
 Geology.



INDEX MAP SHOWING AREA (COLOURED BLUE) COVERED BY ICE DURING THE LAST GLACIATION

115-1

Geology field sheets

Williams Creek

(Copper)

9 Bonanza King Property (62°23'N, 136°38'W)References: Cairnes (1908, p. 10*; 1910, pp. 57-60)*;
Eostock (1936a, p. 56).

1965

The Bonanza King group of 4 crown-granted mineral claims is held by C. F. G. Coulter of Carnacks, Yukon. The main workings, on the Bonanza King Claim, are located on the east side of Nancy Lee Creek about 1,000 feet from the mouth. The creek is a tributary of Williams Creek and joins the latter about 3/4 of a mile above the mouth. A wagon road leading from the Yukon River about one mile above the mouth of Williams Creek is almost completely overgrown. Copper showings were first staked in the area in 1907 and the Bonanza King property was visited by Cairnes in 1907 (1908, p. 10) and 1909 (1910, pp. 57-60). The shaft and upper adit had been driven at the time of his visit in 1909 and only the lower adit has been driven subsequently, presumably about 1913. The author visited the property in July 1965.

The showings consist of quartz lenses, up to 5 feet in width and carrying copper minerals, that occur in altered volcanic rocks of the Mount Nansen group (unit 7, Eostock, 1936a, Map 340 A) close to the contact of later granitic rocks (unit 10, op. cit.). The lenses contain minor bornite and chalcopyrite, now mainly altered to secondary copper minerals, and a small amount of bright pink microcline similar to that in the country rocks. They lie in the plane of foliation (about N 40° W and dipping steeply) of the enclosing volcanic rocks and are believed to consist of a number of echelon lenses rather than a single vein although outcrop is poor between the workings. Rocks assigned to the Mount Nansen group vary from fine grained green volcanics to gneissic rocks crowded with bright pink microcline feldspar crystals similar to those in the nearby granitic rocks. The latter are highly foliated with coarse phenocrysts of pink microcline to about 25 mm and much green hornblende. The workings, all partially caved, consist of a lower adit about 10 feet above creek level, an upper adit about 200 feet above the creek level, and a shaft an additional 200 feet higher in elevation.

K-feld alter n ?

metasomatized ?

1964

a rock with apparent uniform grain size of about 2 mm, a porphyritic rock with ghosts of altered feldspar crystals to 5 mm, and a breccia composed of fragments to about 25 mm. Exposed surfaces of the rock are soon flecked with rusty spots through the oxidation of contained iron-bearing carbonate. Examined microscopically in index oils, the rock consists of: fine quartz, much of which is probably of secondary origin; fine muscovite, (replacing feldspar?); irregular grains of carbonate; and tiny pyrite cubes. The carbonate has a refractive index N_o between 1.71 and 1.73 and is probably a ferroan dolomite or ankerite although it may be an iron-bearing magnesite. In addition to the previous minerals, a specimen from the upper cut contained partially altered crystals of orthoclase feldspar. In the author's opinion, the country rock of the showing may have originated through the extensive alteration of a porphyritic rhyolite breccia (unit 13, Bostock, 1936a), although others who have worked on the property have suggested that the rock is an altered arkose.

silicification

The recent drilling by Cenex is reported (personal communication) to have cut altered zugite-biotite quartz diorite. The rock contained minor pyrite and chalcopryite associated with the ferromagnesian minerals. Core from the Forrest Ridge showing is much as that from the main showing although dark green, banded, chlorite-rich rocks are also present. One specimen of core contained partially altered orthoclase feldspar.

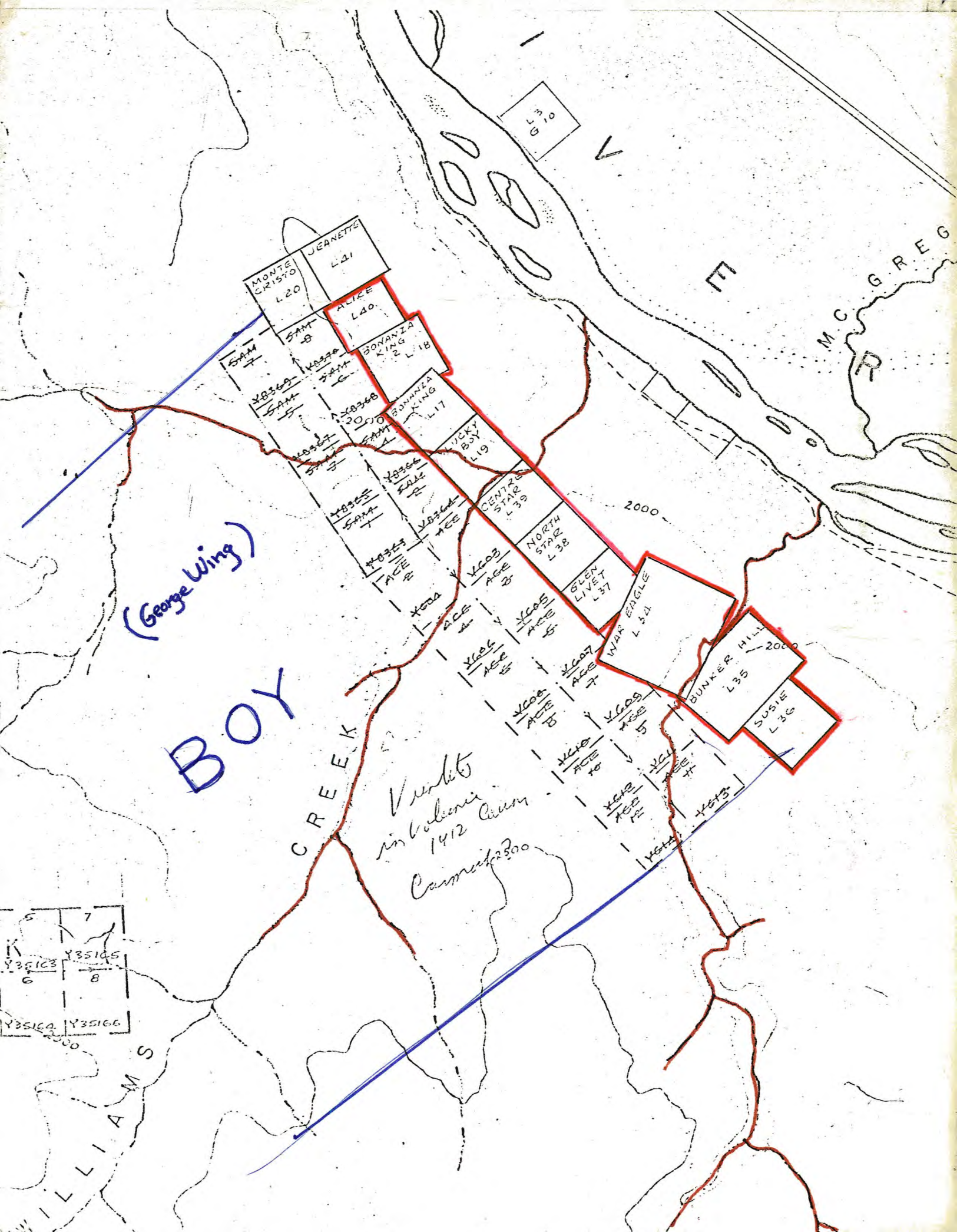
Mineral Exploration & Devel. 1969-70

BC - Yukon

Tom Elliot

Western Canadian Copper

Intercontinental Research & Analysis



3
L 10

MONTE CRISTO L20
JEANETTE L21

ALICE L40
BONANZA KING L18

BONANZA KING L17
LUCKY BOY L19

CENTRE STAR L39
NORTH STAR L38

EVY L37
WAR EAGLE L34

BUNKER HILL L35

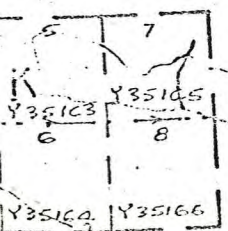
SUSIE L36

(George Wing)

BOY

CREEK

Volts
in Volcanic
Cannon
2300

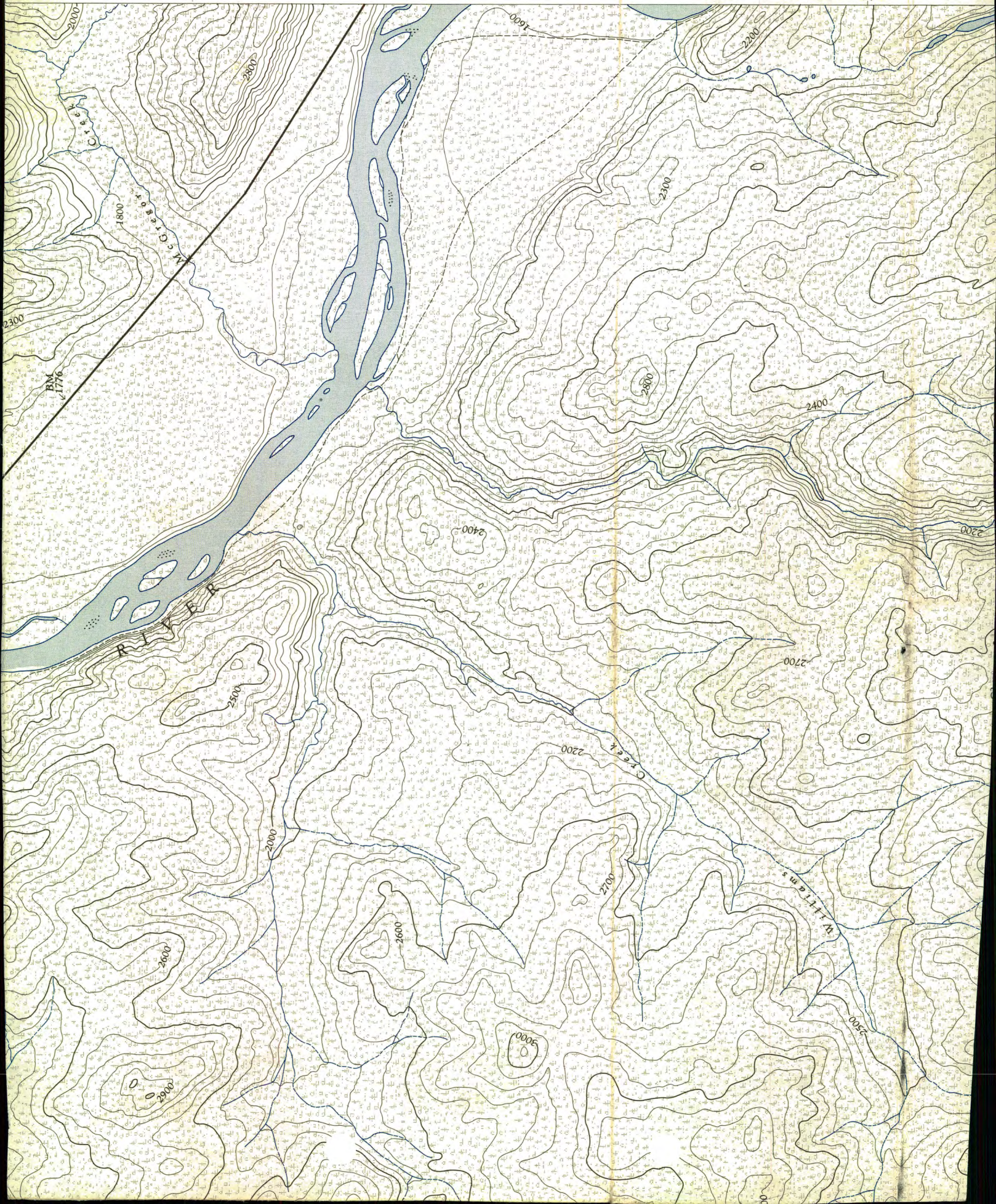


WILLIAM S

M.C. GREG

Carmacks 22 m

20'



were spent on Williams and Merritt creeks, where recent copper prospects are attracting some attention.

Merritt creek empties into Lewes river on its left limit, five miles below Yukon Crossing; while Williams creek joins the river one mile farther down. These two creeks, for several miles from their confluence with the Lewes, have almost parallel courses, at practically right angles to the river. Yukon Crossing is about 155 miles from Whitehorse, measured along the Whitehorse-Dawson wagon road, and 230 miles from Whitehorse, by the river, and is midway between Whitehorse and Dawson.

Merritt creek was formerly known as Merrice creek; and was so called after Homer Merrice, who discovered placer here in 1898. By a mistake, and believing it to be the original, the present name has been adopted. Williams creek is named after a prospector by that name, who was one of the first to locate on this creek in 1898.

During the season of 1898 these creeks were prospected for quartz and placer, for 25 miles from the Lewes river, and the old workings of this time can still be seen in many places. From then until 1907—when practically all the claims now being held were located—the district was unoccupied.

The only two rock formations which exist at all extensively in this district consist chiefly of granites and amphibolites. The latter are the older and are much altered, dark green, sheared eruptives, which consist chiefly of plagioclase and green hornblende, in nearly equal amounts. The schistose structure is generally quite pronounced; still, the rocks are practically never thinly foliated. The granites are generally greyish to pinkish, coarsely crystalline rocks. A thin section of a typical specimen examined under the microscope showed it to be composed chiefly of orthoclase, microcline, acid plagioclase, quartz, and biotite, with accessory apatite, titanite, and magnetite, and a great amount of secondary epidote and chlorite. In all probability, these granites belong to the series of granitic rocks composing the Coast Range batholith, which are generally considered to be Jurassic. The amphibolites lithologically correspond to certain pre-Ordovician rocks which have been studied in the vicinity of Dawson*, and elsewhere in the Yukon Territory.

The granites have invaded the amphibolites to such an extent that the outcrops of the two formations appear to be about equally extensive: tongues, dikes, and irregular-shaped masses of the former being found everywhere, where rock, in place, is to be seen.

The ore deposits of this locality occur either at or near the contacts of these two formations, and are everywhere of the same character, consisting of veins of quartz impregnated with copper minerals, chiefly bornite, chalcopyrite, and malachite. Particles of free gold are also believed to have been found on one property. The only apparent reason for the quartz being always so near the contact is, that the mineralizing solutions which have deposited the ores have found easier places for circulation in these somewhat decomposed and fractured zones. The ores are apparently genetically connected with the granites, the ore-bearing solutions being an after effect of the intrusion of the granite mass.

The ores of the district are all of such a nature as to lend themselves readily to treatment by concentration.

All the claims and copper grants in the vicinity, on which any work has

* R. G. McConnell. "The Yukon Gold Fields", Geol. Survey Branch, Canada.

been performed, or on which any ore is known to have been discovered, were examined. The only ones, however, on which any considerable amount of ore was seen, or which, from their surface showings, give promise of being of value, are the Bonanza King, the Homestake, the Monte Cristo, and the Dawson. It is quite possible, and even probable, that there is a considerable amount of ore in this locality which has not yet been discovered, since the surface is, in most places, covered with superficial deposits.

(1) The Bonanza King is situated about one mile from the Lewes river, on Nancy Lee creek—a tributary of Williams creek—joining the latter on its left limit. This property is one of eight claims comprising the Bonanza King group, owned by Messrs. J. Munroe, J. View, and M. H. Boulais. All the development work on the group has been performed on the Bonanza King and Dawson claims. The work on the Bonanza King consists of 150 feet of drifting and cross-cutting, and a 30-foot shaft. The entrance to the drift is 250 feet above the level of the Lewes river, at the mouth of Williams creek; and the top of the shaft is 250 or 300 feet distant from the mouth of the drift, and 200 feet above it.

The shaft is sunk on a vein of quartz which is 6 feet wide at that point; but is lens-shaped and narrows rapidly in each direction. The vein is in granite, near its contact with the amphibolite, and carries considerable bornite, chalcopryite, and malachite. Particles of free gold are also believed to have been found here. Two samples of the better mineralized portions of the vein, one taken near the surface and the other about 15 feet from the surface, were assayed, and gave, respectively, the following results*: (1) gold—trace; silver—trace; copper, 3.29 per cent; (2) gold—trace; silver—trace; copper, 4.21 per cent.

The vein in the drift occurs in the contact between the granites and amphibolites, and, where first encountered, is wider than elsewhere observed, having a width of 5 feet. It narrows to a few inches in a distance of 20 feet, in the direction in which the drift has been run. It was found, however, on the surface on a level with the drift, and at a distance of 50 feet from where first cross-cut, and has here a thickness of 3 to 4 feet.

Both the vein at the shaft and the one in the drift strike approximately in the same direction: N. 45° W, but are not connected with each other. It is possible that other similar deposits exist along this contact, either between the two already found, or farther to the northwest.

The formation has here been considerably shattered and broken. One very prominent fault plane, indicating a displacement of considerable magnitude, was noted in the cross-cut and drift, having a strike about parallel to the strike of the veins. So that the faulting will serve to further complicate the working of these deposits.

An average sample of the 5 feet of quartz in the drift was assayed, and gave the following: gold, 40 cents; silver, 0.30 of an ounce; copper, 1.56 per cent.

On the Dawson claim a 40-foot drift has been driven on a quartz stringer in the amphibolites near their contact with the granite. The quartz, at the surface, was only 2 inches or 3 inches wide, but at the end of the drift was 18 inches. The ore is very similar to that on the Bonanza King.

On the Monte Cristo claim, which is also on Nancy Lee creek, and is

* All assays given in this report were made in Ottawa by the Mines Branch of the Department of Mines, Canada.

owned by Me
which, where
are several pa
chiefly of qua
covered, nearly
weathering and
the chances of
number of valu

An average
follows: gold, 2

The Home
Merritt creek,
I. B. Sanburn.
on the Homest
creek, two and
at this point is
mouth, and the
creek bottom.

river, up Merrit
The widest
development ha
surface. A drift
run off it, has a
width of from 1
their contact w
stringers up to 1

The format
tered and faulte
to be often brok

The main
northwest at 45
feet below the d
maximum width
strikes N. 42° W

Higher up t
exposed, widths

The wider
zone of amphi
has been introd
a number of lay
quartz, the two
this vein, and al
part of the qua
lenses are, occas
for considerable

An average
was assayed, and

An average
better grade of
property. This as

The solid ro
are nearly every

owned by Messrs. Thompson and Granger, a vein has been discovered which, where exposed, has a thickness of 5 feet. Within a few feet of this are several parallel stringers a few inches wide. The vein-filling consists chiefly of quartz, bornite, chalcopyrite, and malachite. The surface is covered, nearly everywhere in this vicinity, with drift and the products of weathering and decomposition, making prospecting very difficult; so that the chances of finding ore, at all, are but slight, even though there were a number of valuable veins on this and the adjoining properties.

An average surface sample of this 5-foot vein was assayed, and gave as follows: gold, 20 cents; silver, 0.20 of an ounce; copper, 1.00 per cent.

The *Homestake* is one of six copper grants of 160 acres each, located on Merritt creek, and owned by Messrs. C. L. Johnson, Chas. Seagam, and I. B. Sanburn. The development work for the group has all been performed on the Homestake grant, which is located on the south side of Merritt creek, two and a half miles from the Lewes river. The valley of the creek at this point is 300 feet above the average level of the river, at the creek mouth, and the main workings of the property are about 150 feet above the creek bottom. There is a good grade for a road to this property, from the river, up Merritt creek.

The widest vein found on this property, and on which nearly all the development has been expended, is 6 ft. 6 ins. wide, where it outcrops on the surface. A drift has been driven on it, which, including several cross-cuts run off it, has an aggregate length of 155 feet. The vein in the drift has a width of from 12 to 55 inches, and is in the greenish schistose rocks near their contact with the granite formation. Besides this main vein, other stringers up to 10 inches wide were encountered in the drift and cross-cuts.

The formations along the face of the hill have been considerably shattered and faulted, causing the veins in the drift and elsewhere in the vicinity to be often broken, rendering the working of them somewhat difficult.

The main vein in the drift strikes about N. 83° E, and dips to the northwest at 45° to 55°. Outcropping along the face of the hill, and a few feet below the drift, is a connected series of elongated quartz lenses whose maximum width is 3 to 4 feet; which is traceable for over 200 feet, and strikes N. 42° W, the lenses usually dipping at 80° to 85° to the northeast.

Higher up the hill four other veins have been uncovered, having, where exposed, widths of 14 inches, 16 inches, 2 feet, and 3 ft. 6 ins., respectively.

The wider veins are often of a composite character; consisting of a zone of amphibolite, along the foliation planes of which, more or less quartz has been introduced. In the drift, where it is widest, the vein consists of a number of layers of schistose rock alternating with tabular masses of quartz, the two being in about equal amounts. In places, however, along this vein, and along others on this and neighbouring properties, the greater part of the quartz in a cross-section occurs in a single mass or lens; the lenses are, occasionally, connected, forming practically continuous veins for considerable distances.

An average surface sample from the 6 ft. 6 ins. of quartz above the drift was assayed, and gave: gold, 20 cents; silver—trace; copper, 0.28 per cent.

An average sample was also taken of a number of large pieces of the better grade of ore from the different surface exposures on the Homestake property. This assayed: gold, \$1; silver, 1.30 ounces; copper, 0.92 per cent.

The solid rock formations on the Homestake and neighbouring grants are nearly everywhere covered, and the finding of the quartz has been

? might be interesting

generally due to some such fortunate accident as the finding of particles of quartz attached to the roots of an *overblown tree*. Since quartz has been found at so many points, with little *bedrock visible*, it seems quite probable that a large number of veins would be *exposed* if the mantle of superficial materials could be removed.

In 1910 n

In his Su
Brock, include

"Mr. D.

between the Y

"For the

section to the

United States

responsible for

Porcupine Riv

River to the A

be about 340 m

"Returning

properties in th

The prelin

Reports for 19

Yukon-Alaska

the information

single complete

available. Only

Mining in the

and vicinity is

QUAR

After com

(the Yukon-Al

examination of

Klondike distri

is situated along

aries.

Consideral

veins of the K

lode mining of

derived from th

of this portion

which it is thou

Quartz vei

district, and alt

* For the resul

May 14th, 1970.

Mrs. Ida Goulter,
Carmacks, Y.T.

Dear Mrs. Goulter:

I understand our geologist, Wayne Roberts, contacted you previously concerning your Williams and Merrice Creek property. He advised me that you thought the snow cover would limit any examination. If it is alright with you, Mr. Roberts will look at the ground some time next week as I understand it is now snow free. I will contact you during the week of May 26th concerning his findings.

Yours truly,

ATLAS EXPLORATIONS LIMITED,

J. S. Brock,
Vice-President Exploration

JSB/mop

March 18th, 1970.

Mrs. I. M. Goulter,
Carmacks, Y.T.

Dear Mrs. Goulter:

Thank you for your letter of March 10th. We will have a geologist, Wayne Roberts, in Carmacks on or about April 1st. I have instructed him to contact you concerning your Williams and Merrit Creek properties. Mr. Roberts will make arrangements to visit the ground as soon as snow conditions permit, after which time I will advise you of our intentions to enter into negotiations with you. Of course this proposal is subject to your stipulations.

I was certainly not aware that Mr. Kulan was interested in the properties concerned and I am quite sure that he has no knowledge of our previous correspondence. Mr. Kulan's interests are entirely separate from those of Dynasty Explorations.

I should stress that we cannot guarantee entering into any deal with you until we examine the ground in question.

Thank you very much for advising me of other major companies' interests in your ground.

Yours truly,

ATLAS EXPLORATIONS LIMITED,

J. S. Brock,
Vice-President Exploration

JSB/mp

Carmichael J. T.
March 10th / 1970

Mr. J. S. Brock
Vancouver B.C.

Dear Mr. Brock,

Your letter dated March 3rd arrived, and I noted you expect to be here some time in May, and would look at our crown grants on Williams and Merritt Creeks Yukon.

No doubt you sent or are aware that Mr. Kulan came and made offers last Saturday evening (?) as when I said "I suppose one of your business associates sent you" right away he said "Brock"? So he seemed to know you had written about the crown grants, another man who was here did not leave all the he ~~know~~ ^{know} Mr. Kulan came to talk over things. I was reluctant to speak very much as I cannot do business with an outsider sitting in same room. But I gave Mr. Kulan a 13 page conditional proposal for Arrow-Enter-America and where what price it was to be, \$500,000 and shares, and maybe 20 percent. When Mr. Kulan said I had no guarantee Atlas would take property as no money paid to hold it (I have also letter from 3 other major companies) I showed him a copy of the one shipment from the large grant. (142 acres) I believe I sent you a copy

I had not heard of the shipmen nor of the exact
shaft, cuts, but as so long ago most have faded
there is one over 17000 feet the whole length of
the 10 titles and further ^{average equal to 13 regular claims} now all stated by other
company who has also made offers (too low)
they run a survey and picked up a wide anomaly
from our grants on side But no doubt same kind
on our grants, and map & house of der Carners shows cu,
out crops over 8 miles on claim have most.

The domestic grant (142 acres) alone is better than
our original's "chiefs" larger also and they took out
millions our's also can be open pit, or at least
some of them

While Mr. Kuran has gone outside and shall fix
up a 'deal' I have not ^{accepted} ~~accepted~~ any. But I
thought I should let you know. He has never
been on property but report in Memoir ²⁸⁴ ~~334~~ page 339
and since reading shipment of 1917. He is more
interested (also in our other property)

Now the only way I could give you an option
of Sale would have to be now and payment
and as you no doubt shall not do that, I feel
morally obliged to let Mr. Kuran have next
^{or refusal} ~~all~~ ~~the~~ ~~property~~. Hope I have outlined my position

Thank you for your interest
Yours truly
I da. M. Gentler (Mrs)

Phone no. Carreteras apuraca 5431.

trial shipment from crumppants on one claim

old domestic new hen eagle 1917

13.860 lbs - 607% cu,

83.0340,

1.90349.

also some trial shipment in one

hand picked and sacked of course.

all record laws in city.

*Prop.
Submitted*

March 3rd, 1970.

Mrs. I. M. Goulter,
Carmacks, Y.T.

Dear Mrs. Goulter:

Thank you for your recent letter concerning vacant lots you have for sale in Carmacks. At the present time we have no intention of purchasing land in the Carmacks area. However, I will be in Carmacks this coming May and at that time will contact you concerning your property.

At the same time, we will also take a look at your Williams and Merrit Creek properties if you have not yet made a deal with some other company.

Thank you very much for your interest in our Company.

Yours truly,

ATLAS EXPLORATIONS LIMITED,

J. S. Brock,
Vice-President Exploration

JSB/mp

Mr. J. S. Brock
Atlas Exploration Ltd
Vancouver B.C.

Carmacks in Yukon
Prop.

Dear Mr. Brock;

I am offering some of my ^{vacant} deeded lots to mining companies situated very well in Carmacks, on main street road where all trucks etc from Nansen Mt. it reaches the mines pass. - These lots are 4, a good 109 + 200 ^{feet} each as they are deeded (held 40 years) one can build with no restriction and very suitable for garage, parking, offices, homes, quite large enough for a mine Base of work needed as a terminal in Carmacks.

So I offer them as one block. - as lots in White Horse sold for \$3-5,000 per 50 + 100 feet, these are as good and better when needed. Look them over some time.

We have had several titles from companies that write they are interested in our 10 titles crown grants Williams & Merritt creeks, as well as Atlas, these claims should be very good we believe. Hope you read the old report in Memoir 284, p. 339, - Memoir 1891, Page 51. - as 2 of the old signs makes area covered about or over 17,000 feet of mineralization.

and the actual dip is over 17. Now this should be enough for a small mine, as your company has other claims in Casino-Carmack area, there might be a number of your value. J. M. Gutter (over)

P.S.

We also have 7-21 year leases
surround my perso. mt, nassau, Primm, N. Dade
mills. These claims I could show they good
or encap etc. for sale

115-D-~~7~~ 7

December 15th, 1969.

Mr. I. M. Goulter,
Carmacks, Y.T.

Dear Mr. Goulter:

Thank you very much for your letter of November 27th. We are familiar with the ground you wish to option but are unable to comment any further on our interest until we make an examination as soon as the snow goes next year.

We will be very active on the Carmacks Sheet and will certainly contact you in Carmacks next spring when we move back into the area.

Thank you very much for allowing us the opportunity to consider your property.

Yours truly,

ATLAS EXPLORATIONS LIMITED,

J. S. Brock,
Vice-President Exploration

JSB/mp

J. M. GOULTER
Carmacks Yukon
Nov. 27, 1969

Mr. Gordon Davis
Atlas Exploration Ltd
Vancouver B.C.

Dear Sir,

I read in paper where your company has staked some claims around 470 in the so called "Carmack area" and were looking for granit porphyry copper etc.

We hold crown grants, 10 titles all adjoined one line two are extra large 140⁷⁰ and 98 acres. Making area covered nearly equal to about 13 claims area. All claims have mineralization and the grounds according to old reports. Could be open pit please read ^{Geological} Memoir 284, Page 339. Williams & Merritt Creek & Nancy Lee Creek, ore runs into granit porphyry, a trial shipment reads on Record Dawson City office, 1917. sent to smelter returned ^{From} 13.860 lb ore - 607% Cu - 1.93. Ag. - 0.33. Au. - no mention of other minerals altho there are others. guess none were saved ^{like telluride etc.} those days shipment from "Bonanza King group", now called "Ear Eagle" another shipment from the "Bonanza King group", was 5 tons no record here. could be in while here office Mr. Bastock recommends this deposit in his memo 189. Page 51.

claims never been drilled nor inspected since 1918 or so. The claim in memoir 284 called Dawson is now Bonanza King No 2.

This deposit could make a small mine alone,

2. as the old homes. do alone (194.70 acres, better showing than the Little and Antioch of new Imperial mines and they took out "millions of dollars" in values we need, from just these claims

while map reads Merrace creek not Merritt. It was Mr. Batock change it. Thinking it was for Home Merrace he was not tho. It was for Louis Merritt and Billy Williams who first placer mined then staked lode claims I know, around 1909

If you are interested the names and numbers are,

	claim	acreage
no 20 Monte Cristo	953	50.13
18. Bonanza King no 2. (old Lawson)	953	51.65
17. Bonanza King	953	46.58
19. Lucky Boy	953	51.87
39. North Star	10	44.36
38. Center Star	10	51.65
35. Bunker Hill	10	98.00
37. Glenlivet	10	41.11
34. War Eagle. old Homestead	10	141.70
36. Suzz.	10	57.65

can look at map. Carmichael Williams Merritt sheet.

one can strip right along all claims I believe, I know where more ore is (in old report) not staked so far.

No doubt you have enough properties. But I will say you and shall offer them to others as well.

Yours truly,

L.M. GOULTER

May 23, 1968

Mrs. Ida M. Goulter,
Carmacks,
Yukon.

Dear Mrs. Goulter:

Thank you most kindly for your letter of May 14 with details regarding your Crown-granted properties on Williams and Merritt Creeks as well as mention of your leases on Nanson Creek. Although I am not personally involved in making examinations of properties at this time, I will pass this on to some of our people who are working in Yukon doing outside exploration for Atlas Explorations, for their consideration.

If this fits into their program perhaps they may wish to make an examination, otherwise we trust that you will be able to interest other parties in the interim.

I expect to be reasonably active in Yukon this summer and will follow up to see if something has been done.

Thank you most kindly for bringing this to my attention.

Yours very truly,

A. E. Aho

FOR ATTENTION
OF:
DATE:

AEA:eph
L-894
c. c. JSB

READ	TO	ACT
	AEA	
	REGD	
	GKA	
	LPL	
	JSB	
RETURN TO:		
FILE: <i>Property Submitted</i>		
SEE OVER FOR COMMENTS:		

2. The last mentioned is on record in Dawson City mines office. But the 50 Ton shipment I have no record of. But a man still around Canonadas worked on the claims and he can verify the 50 Ton shipment.

Other minerals aren't on but not many are here.

The ore goes into the granite contact, and as report reads 'no doubt more veins under the surface of the superficial materials were removed, & could be open stripped.'

The minerals I have written ~~more~~ 10 or more much farther from here, as no one has found it, and just know about the copper, gold, silver etc. I expect where the claims are.

If you read Memoir 284, p. 339, you will note very good assays were taken. Also my father found grey copper tetrahedrite there. I had several large chunks but of one are the grains same as here.

These claims have never been drilled - also 100-200 more claims cover the Stake to make a good block. No one covers the spots. If my Staking no claims there except my claims are in good standing.

There is no reason I can see why a mine of good ore could not be made there. Why don't you have a try Mr. Aho? I ask you because

3. I think maybe you are hearing - to reason
to see asked

Use State hold on 7-21 year leases on
Wiscasset Paper Creek, Nansen But as
Mt Nansen - poss. make surround our
claims. I suppose no other company will
ever offer to buy them.

I shall not ask Mt Nansen either as
they know we hold the 7 leases. Their
edit on whether should reach our side
in a year or two

Use I hope you will be interested
in our crown grants on Willeams and
Merrett Creeks N.T.

If you care to find another prospect as
paper reads, try our crown grants.

Old names were changed years ago when
surveyed. Like "Bones Lake" is now "Bear Lake"
and "Hawson" is "Bonneyking No 2."

Yours truly,

J. M. GOULTER,

Certificate of Assay

FROM

HOWARD E. BURTON

111 East 4th St., Leadville, Colorado

I hereby certify that the samples assayed for
gave the following result of 2,000 pounds.

M. C. Mack

VALUE PER TON

MARKS	GOLD OUNCES	SILVER OUNCES	LEAD PER CENT	COPPER PER CENT WET	IRON PER CENT	MANG. PER CENT	SILICA PER CENT	VALUE PER TON	
								INC. CENT	PER CENT
		<i>Trace</i>		$\frac{6}{10}$		$30\frac{4}{10}$			
<i>This is manganese oxide instead of copper oxide</i>									

JUL 15 1900

CHARGES PAID

H. E. Burton

ASSAYER

See assay, see assay, I don't know where this manganese oxide is some assay says to 92% I don't know where National can trace it and all these things will in the Procters sether

larger manganese oxide assay gold with 14% near deposit of silver

TERRITORIAL GOVERNMENT ASSAY OFFICE

Wisc. assay report
Kenosha
Kenosha
 Kenosha City Y. T. 28th Oct. 1931.

Mr. C. P. Mack

Nansen
Galena
 Carnacks, Y.T.

RK ON SAMPLE	GOLD		SILVER @ 20%		TOTAL VAUE PER TON GOLD AND SILVER	PERCENTAGE OF		
	OZS. PER TON	VALUE PER TON	OZS. PER TON	VALUE PER TON		COPPER	IRON	LEAD
1.	Trace	---	6.4	1.85	1.85	<i>Pink</i>	<i>6 MAIN</i>	
2.	Trace	---	6.4	1.85	1.85	<i>Sons</i>	<i>only</i>	<i>Con cent</i>
3.	Nil	---	Nil	---	---			
4.	Nil	---	Nil	---	---			
5.	Nil	---	Nil	---	---			
6.	Nil	---	Nil	---	---			
7.	Nil	---	Nil	---	---			
8.	Nil	---	2.0	0.58	0.58	<i>Brown</i>	<i>6.8</i>	
9.	Trace	---	Trace	---	---	<i>6.35</i>	<i>Quality</i>	
10.	Trace	---	118.0	34.22	34.22	<i>6.35</i>	<i>Galena</i>	78.66
11.	Nil	<i>By Stamp</i>	Nil	---	---	<i>By Stamp</i>		
12.	Trace	---	4.0	1.16	1.16	<i>No 3</i>	<i>6</i>	<i>Cobalt</i>
13.	Trace	---	5.0	1.45	1.45	<i>Dolly</i>	<i>on ridge</i>	
14.	Trace	---	Trace	---	---	<i>Crack</i> <i>2 1/2 on</i>	<i>Point</i>	<i>soch</i>

Upper Mack
Mr. C. Adams
Hazelcanna

W. C. Irvine
 TERRITORIAL ASSAYER

TERRITORIAL GOVERNMENT ASSAY OFFICE

Keno Hill Y.T., 27th July 1943.

MR. J.M. Goulter

Carmacks, Y.T.

MARK ON SAMPLE	GOLD @ \$35		SILVER @ 45¢		Total Value Per Ton Gold and Silver	PERCENTAGE OF			
	Ozs. Per Ton	Value Per Ton	Ozs. Per Ton	Value Per Ton		Gold	Silver	Copper	Zinc
1. <i>tan</i>	Nil	---	Nil	---	---				
2. <i>tan</i>	Trace	---	Trace	---	---	Manganese.		7.0	
3. <i>tan</i>	Nil	---	Nil	---	---				
4. <i>black</i>	8.0	280.00	2.0	0.90	280.90	Tungsten.		Trace	
5. <i>tan</i>	Trace	---	Trace	---	---				
6. <i>tan</i>	Nil	---	Nil	---	---	Zinc.		63.0	
7. <i>tan</i>	Trace	---	Trace	---	---	Copper.		10.26	

marks 10 claims nice spread within 100 yds. many miles

Tom Wright said is as good as 90% and a little more than this for his own 200 yds. East

W. J. ...
TERRITORIAL ASSAYER

TERRITORIAL GOVERNMENT ASSAY OFFICE

MAUSLEY

W's prop. ass't

Whitehorse, Y. T., 3rd August 1917.

Mr. C. P. Mack

CARINACKS,
Caracas, Y.T.

OWNER'S MARK ON SAMPLE	GOLD		SILVER <i>800</i>		TOTAL VALUE PER TON GOLD AND SILVER	PERCENTAGE OF			
	OZS. PER TON	VALUE PER TON	OZS. PER TON	VALUE PER TON		COPPER	IRON	LEAD	TIN
Quartz. 1.	Trace	=	0.60	0.48	0.48				
Red Clay. 2.	0.02	0.40	13.98	11.18	11.58				
White. 3.	Trace	=	0.60	0.48	0.48				

W. J. Shaw
Territorial Assayer.

10 titles	Claim grants. Merrett & Williams - Nance Lee Creek		
No. 20. Monte Cristo	Group 10 Group 10	acreage	
No. 18. Bonanza King	No. 2. Old Homestead	453	50.13
No. 17. Bonanza King		953	46.75
No. 19. Lucky Day		953	51.57
No. 38. Centerstar		10	51.65
No. 39. Northstar		10	49.36
No. 37. Glendinet		10	41.11
No. 35. Bunker Hill		10	98.00
No. 34. Van Eagle. Old Homestead		10	141.70
No. 36. Duzzy		10 (over)	57.65

Have record when copper
 was sold in old array 1888.
 W. Hoffman. ag. 088. in Rock.

Made copper. 1 claim grant. Hazel may lot 20 Group 10.
 vein 200. 10 Feet. small. also more farther or. and old adit
 no record for this. 63% Spalite vein near copper mine stated
 known prospects
 oil shale. natural gas rights. - oil in mercury, water gas, - both miles
 manganese base. depth 59. m. n. field etc

Liberty Pulp & Paper Co. Inc. Liberty, N.Y.
Crest Pulp Co. and Loyal Creek, N.Y.
7-21 Year Lease

Names:
Mills - Neos - Duval - Mipple
Cortlandt, - Stoney - Hager ^{Avue}
Newman Newman Highway - Newman.

C. F. Gault
Carmacks
N.Y.
Phone 5431

C. F. Gault
Carmacks N.Y.
Phone 5431

abokna wher
More installed copper
oil shale natural gas
Manganese near 39% Mn.
oil and manganese
large deposit
Manganese
trace of 14 mte
to 15% Mn

Crown grants Williams & Merritt creeks
 2 1/2 miles under drilled. Geochem
 samples also taken. No. 1000.

add one crown grant makes copper
 Hazel may 1st 20 sample. Also 10 FT roof
 Re. memo 254 - p. 51, 568. also see
 memo 189 - p. 51, - and memo 5
 appendix. 2.10 Foot vein found on claim.

add 7-21 year bases on
 discovery of copper creek other side of hill
 from mt. nansen claim on the other creek
 headed to -wards on side.

on claims contain minerals from
 granite sluicing 1935 etc. recalled
 hundreds of pounds of chunks of silver
 silver to over 100 oz. - cuts veins.

also in Stone Cassinite hundreds of thousands
 zinc, tungsten, molybdenum, gold nuggets
 and 303. in place boxes.

one claim "Mack Mc": sheet like copper
 pyrite, gold silver etc.

one claim gold silver - Hazel area
 cuts veins.

cases run to 1977. C.F. Gault
 carried a book.

Crown granted mineral claims
 on Williams & Merritt creeks of T.
 10 titles as 2 are extra large make
 about equal area covered 13 claims,
 all adjoined on line. Mineral zone
 all 18000 feet and further.

Names	Granite Porphyry Group Contact	Group	Acres
No. 20		953	50.13
20. Monte Cristo.			
18. Bonanza King No. 2		953	4675 4675
17. Bonanza King	(old claim)	953	5157 5157
19. Lucky Bay		953	51.65
38. Center Star		10	51.65
39. North Star		10	41.36
35. Bunker Hill		10	98.08
37. Glenlivet		10	41.11
34. War Eagle		10	
	(old Home state)		14170
36. Suzy		10	57.65
See Page 339. Memo 254 Yukon Terr. in mineral shipment 1917 - 13860 lbs as assay 607% Cu - 1.93 Ag, - 0303 Au. also Minerals not mentioned. Arsenic, lead, bismuth No. 20. Barite malachite, chalcocite.			

Discovery Pipe Creek, Tritilaria Nansen
Creek Yukon, and Liza Creek, Y.T.
7-21 Year leases

Names:

Mada - Rico - Sunset - Myrtle
Cortlandt - Ida May - Hazel ^{AMIVE}
Clara Saranda Myrtle Nansen

C. F. Gordon

Caronady

Yukon

Phone 5431

Wescaly of creek
 names

Assay Returns

No	1	Cooper	4.5	Libm	7.7	Geo	Trace
"	2	"	5.0	"	16.5	"	Trace
"	3	"	1.8	"	3.7	"	Trace
"	4	"	6.8	"	6.8	"	0.37

Track claim

No 4 was the pump taken
 from lower end of claim a
 heavy piece of worn iron cap
 it looked the part of piece
 in the bunch, yet arranged
 the best

No 7 was the picked pump

Beryllium, Manganese, Bismuth, Lead,
 Zircon, garnet, copper, columbite, gold, silver
 Zircon, tantalum, niobium, rutile,
 manganese, antimony, arsenic
 Same claim as silver and copper

(over)

MEMORANDUM OF GOLD DUST

DEPOSITED WITH THE BANK OF BRITISH NORTH AMERICA FOR ASSAY

DAWSON, Y.T.,

AUG - 2 1918 191

By *60/11/18*

No. of DEPOSIT	WEIGHT				GOLD			SILVER			MINT CHARGES for Melting, Parting, Refining and Alloy		NET VALUE					
	Before Melting		After Melting		Fineness 1000ths	VALUE		Fineness 1000ths	VALUE		DOLLARS	Cts.	DOLLARS	Cts.				
	OUNCES	Dec.	OUNCES	Dec.		DOLLARS	Cts.		at... 90 per oz.	DOLLARS					Cts.			
62 <i>Krause OK</i>	28	90	27	80	865	497	09	125	305	115			498	99				
														Less Bank charge and 2½% export tax.	20	39		
																478	60	
Gold Value	17	88															430	
Silver Value	11																48	60
Net Value	16	56																

Advanced July 19
Balance

FOR THE
BANK OF BRITISH NORTH AMERICA,
DAWSON, Y. T.
Edmund F. Chamberlain Manager

No. of DEPOSIT	WEIGHT				GOLD			SILVER			MINT CHARGES for Melting, Parting, Refining and Alloy		NET VALUE					
	Before Melting		After Melting		Fineness 1000ths	VALUE		Fineness 1000ths	VALUE		DOLLARS	Cts.	DOLLARS	Cts.				
	OUNCES	Dec.	OUNCES	Dec.		DOLLARS	Cts.		at... 90 per oz.	DOLLARS					Cts.			
124 <i>Des Per Krause</i>	27	30	26	35	863	470	07	132	289	110			471	86				
														Less Bank charge and 2½% export tax.	19	30		
																452	56	
Gold Value	17	83															400	
Silver Value	11																52	56
Net Value	16	83																

Advanced Dec 10
Balance

FOR THE
BANK OF BRITISH NORTH AMERICA,
DAWSON, Y. T.
[Signature] Manager

MESOZOIC

PROBABLY ALL
EARLY MESOZOIC
MAY INCLUDE SOME
LATE CARBONIFEROUS

mainly granite, but including
more basic types.

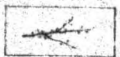


Mainly andesite and related
types with associated tuffs
and breccias

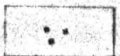
Symbols



Geological boundary
position assumed



Portions of creeks along which
course gold has been found

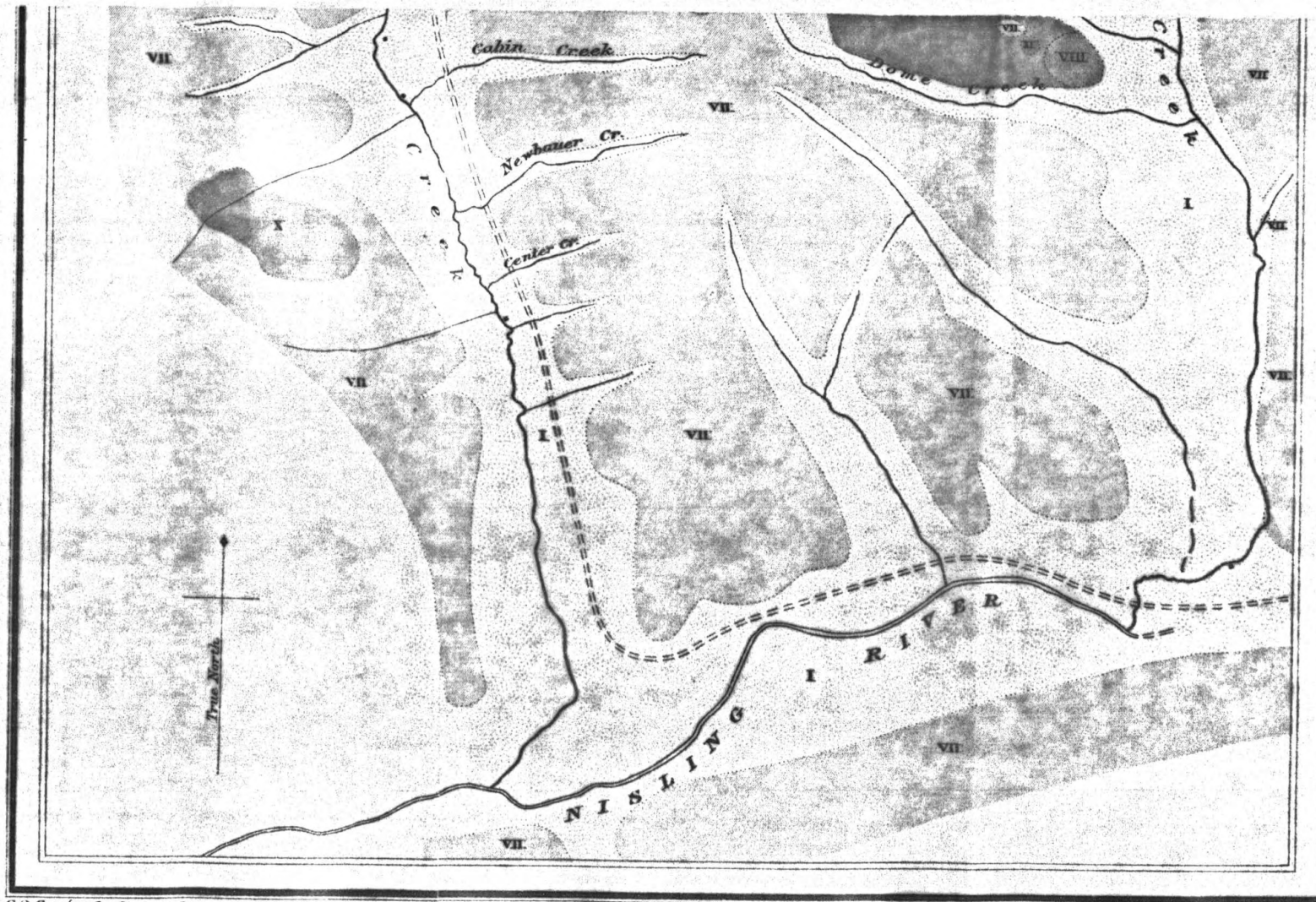


Cabins



Wagon Road
position approximate

Elevations in feet above sea level



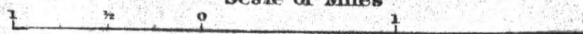
C.O. Senécal, Geographer and Chief Draughtsman.
A. Braidwood, Draughtsman.

1540

MAP 151A
(Issued 1917)

NANSEN AND VICTORIA CREEKS, NISLING RIVER, YUKON TERRITORY

Scale of Miles



To accompany Memoir by D.D. Cairnes

Geology by D.D. Cairnes, 1914.

Canada Department of Mines

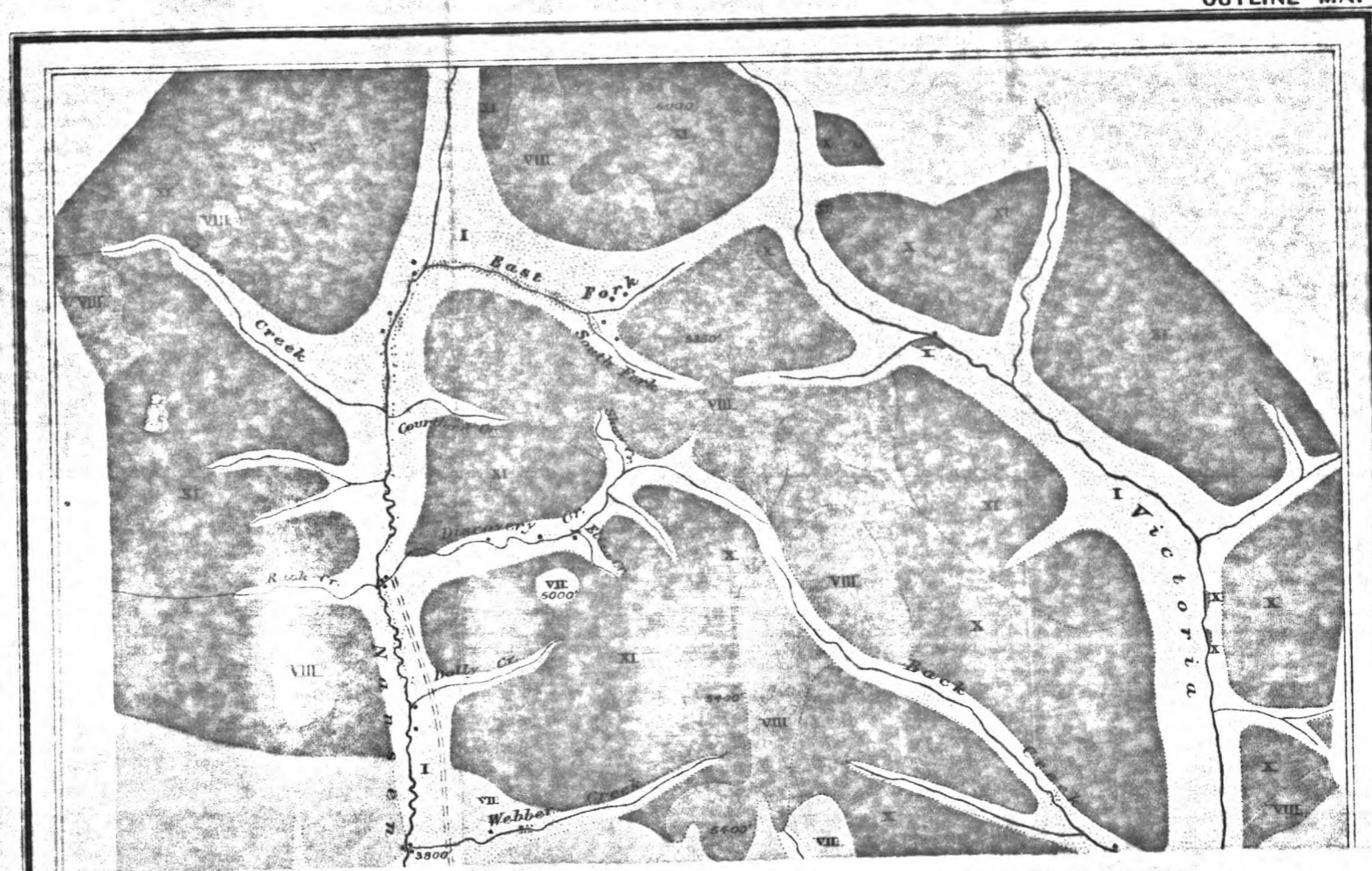
HON. E. L. PATENAUDE, MINISTER; R. G. M^cCONNELL, DEPUTY MINISTER.

GEOLOGICAL SURVEY

OUTLINE MAP

LEGEND

TERTIARY	RECENT AND PLEISTOCENE	<p>I</p> <p>Sedimentary Rocks</p> <p>Superficial deposits <i>Gravel, sand, boulder-clay, silt, soil, muck, and ground-ice.</i></p>
	PRE-CAMBRIAN(?)	<p>VII</p> <p>Metamorphic Rocks</p> <p>Yukon group <i>Mainly mica schists, quartz-mica schists, and quartzite schists.</i></p>
CRETACEOUS OR TERTIARY	PROBABLY LATE TERTIARY	<p>VIII</p> <p>Igneous Rocks</p> <p><i>Mainly rhyolite, granite-porphry, tuff, and breccia; in places silicified and chert-like.</i></p>
		<p>X</p> <p>Granitic intrusives</p>



Copy.

GLOVER WELLS & ELMENDORF.

Certificate of Assay.

No. 8118.

Seattle May 8th. 1923.

The Sample of Iron Sulphides and Black sand very Course.
From C.P. Mack c/o W.C. Barnhart, 224 Ry. Exchange Bldg. Seattle.

Contain.

Gold-----6.60 oz.per ton-----Value \$ 132.00

Silver----15.20 " " " " " \$ 9.12

Total " \$ 141.12

Signed, By.

A.S. Glover.

Charge \$2.00

*fluvial deposit
Missouri Paleocene. transparent
exposed bluffs Yukon river*

1908 average of feet of dirt
 gold trace silver trace copper % 1.80
 0.95 3.4 5.55

Value 1108
 11081

TERRITORIAL GOVERNMENT ASSAY OFFICE

Keno Hill Y.T., 19th June 1943.

from 20 FT. hole 400 FT. long
 hill all impregnated chiefly
 Hematite, magnetite, chalcocopyrite, malachite, azurite.

MR. J.M. Goulter

Carmacks, Y.T.

MARK ON SAMPLE	GOLD @\$35		SILVER @45¢		Total Value Per Ton Gold and Silver	PERCENTAGE OF			
	Ozs. Per Ton	Value Per Ton	Ozs. Per Ton	Value Per Ton		Copper	Iron	Lead	Zinc
1.	Nil	---	Nil	---	---				
2.	Nil	---	Nil	---	---				
3.	Nil	---	Nil	---	---				
4.	Nil	---	Nil	---	---				
5.	Nil	---	70.0	31.50	31.50			77.08	
6.	Nil	---	Nil	---	---				
7.	0.24	8.40	5.76	2.59	10.99	27.30			
8.	0.28	9.80	5.72	2.57	12.37	20.38			
9.	Nil	---	Nil	---	---				

Handwritten notes: "Nansen", "mark", "tunnel mark", "Carmacks"

J. Colville
 TERRITORIAL ASSAYER

Handwritten notes: "I will be glad to see...", "returning", "at the same places"

28.56

ROYAL CANADIAN MINT

MEMORANDUM OF OUT-TURN OF GOLD BULLION DEPOSITED AT THE DOMINION OF CANADA ASSAY OFFICE, VANCOUVER, B.C.

ON THE 6th. of OCTOBER 1936 BY TAYLOR AND DRURY LTD., Whitehorse, Y. T.

#876-B

DEPOSIT No	DEPOSITOR'S MARKS	WEIGHT		ASSAY REPORT		FINE GOLD OZ.	FINE SILVER OZ.	GROSS VALUE			CHARGES	NET VALUE \$
		BEFORE MELT OZ.	AFTER MELT OZ.	GOLD	SILVER			GOLD \$	SILVER \$	TOTAL \$		
1010	#3	1.96	13.37	870	111	11.632	1.48	240.45	.54	241.09	3.00	238.09
											Additional Payment @ \$14.2862:-	166.18
											Less Handling Charge:-	4.07
												400.20

Full of silver saler nuggets + gold nuggets to 3 oz, gathered by the coal and tin fields, all nuggets pure and one lump of all in lower creek making tons for water.

VANCOUVER, B.C., OCTOBER 13th. 1936

*E. H. Mack
Comanche*

*1396) 40020 (28.56
2792
11168
11168
8376*

MANAGER
DOMINION OF CANADA ASSAY OFFICE



Fast Direct Service to Fairbanks
Sea-Land Sales of Alaska-456-7775

Nansen creek area.

Discovers prospect. 7-21 Year leases.

tin stones. hundreds in places. and chunks of galena silver
gold nuggets. all from Kim creek cut over claims. lungsten

leases run to 1977

some copper sheelite on lower Mack M.C. also silver veins
Hazel ^{anne} ag. Idamay ag. etc

Mack M.C.

Reed M.C.

Cortlandt M.C.

Idamay M.C.

Sunset M.C.

Myrtle M.C.

Hazel anne M.C.

Placer has run down to feet near
hundreds of pounds chunks galena silver
21-Year leases

also Brown prospect exposed vein.
near more copper with jade.

also copper outcrop near W. Horse
and other place