



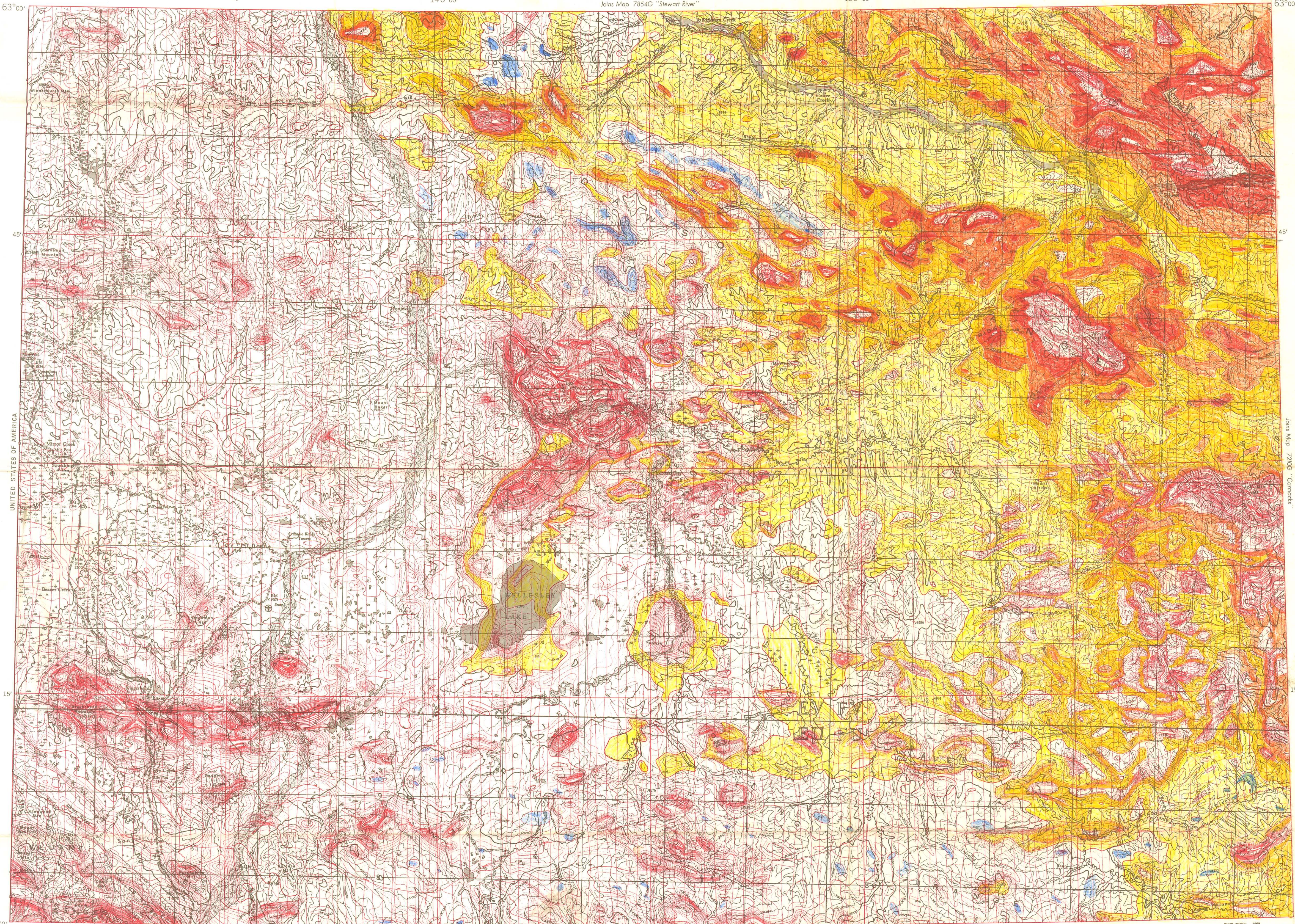
GEOLOGICAL SURVEY OF CANADA  
DEPARTMENT OF ENERGY, MINES AND RESOURCES

AEROMAGNETIC SERIES

SHEET 115 J 115 K E 1/2

141°00' 30' 140°00' 30' 139°00' 30' 138°00'

Joins Map 7854G "Stewart River"

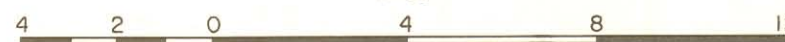


Joins Map 7827G "Kluane Lake"

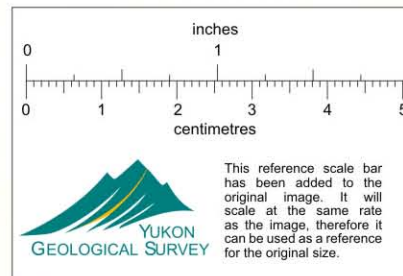
MAP 7840 G

**SNAG**  
**YUKON TERRITORY**

Scale One Inch to Four Miles =  $\frac{1}{253,440}$  Miles



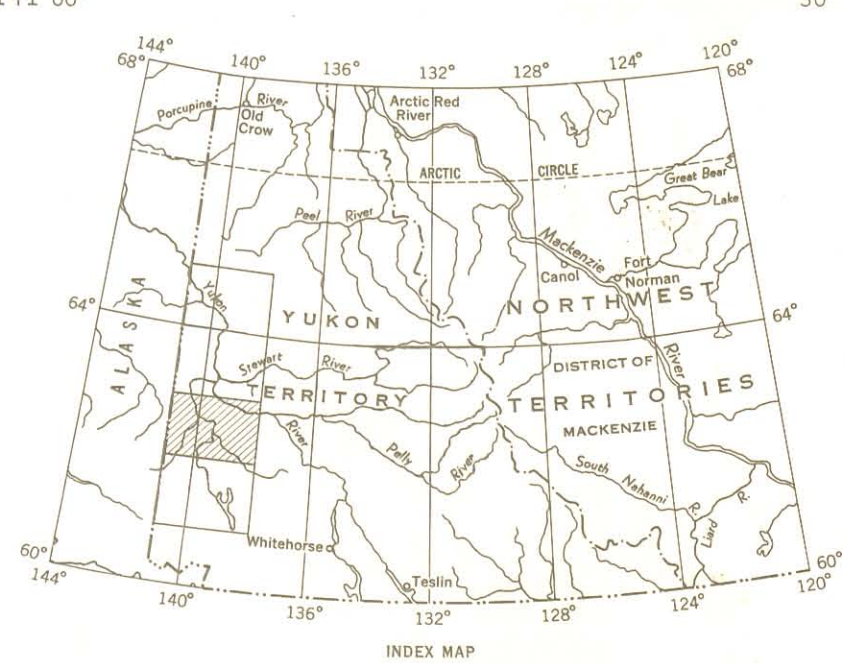
COPIES OF THIS MAP MAY BE OBTAINED FROM THE DIRECTOR, GEOLOGICAL SURVEY OF CANADA OTTAWA



Flight altitude: nominally 1000 feet above ground level where terrain permitted.

Airborne Magnetic Survey, September 1965 to May 1968, by Aero Photo Inc., Quebec, four-mile map compiled from one inch to one mile geophysical maps published by the Department of Energy, Mines and Resources. No correction has been made for regional variation.

GEOPHYSICS PAPER 7840G  
SNAG  
YUKON TERRITORY  
SHEET 115 J 115 K E 1/2



012207