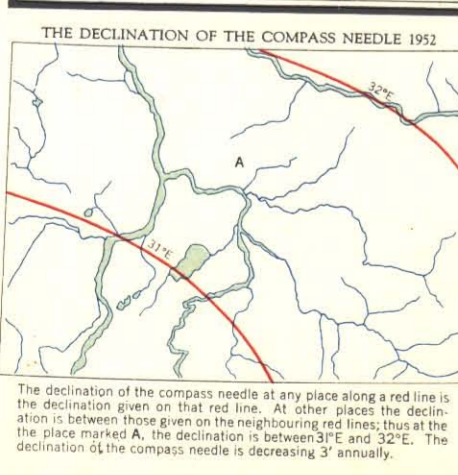
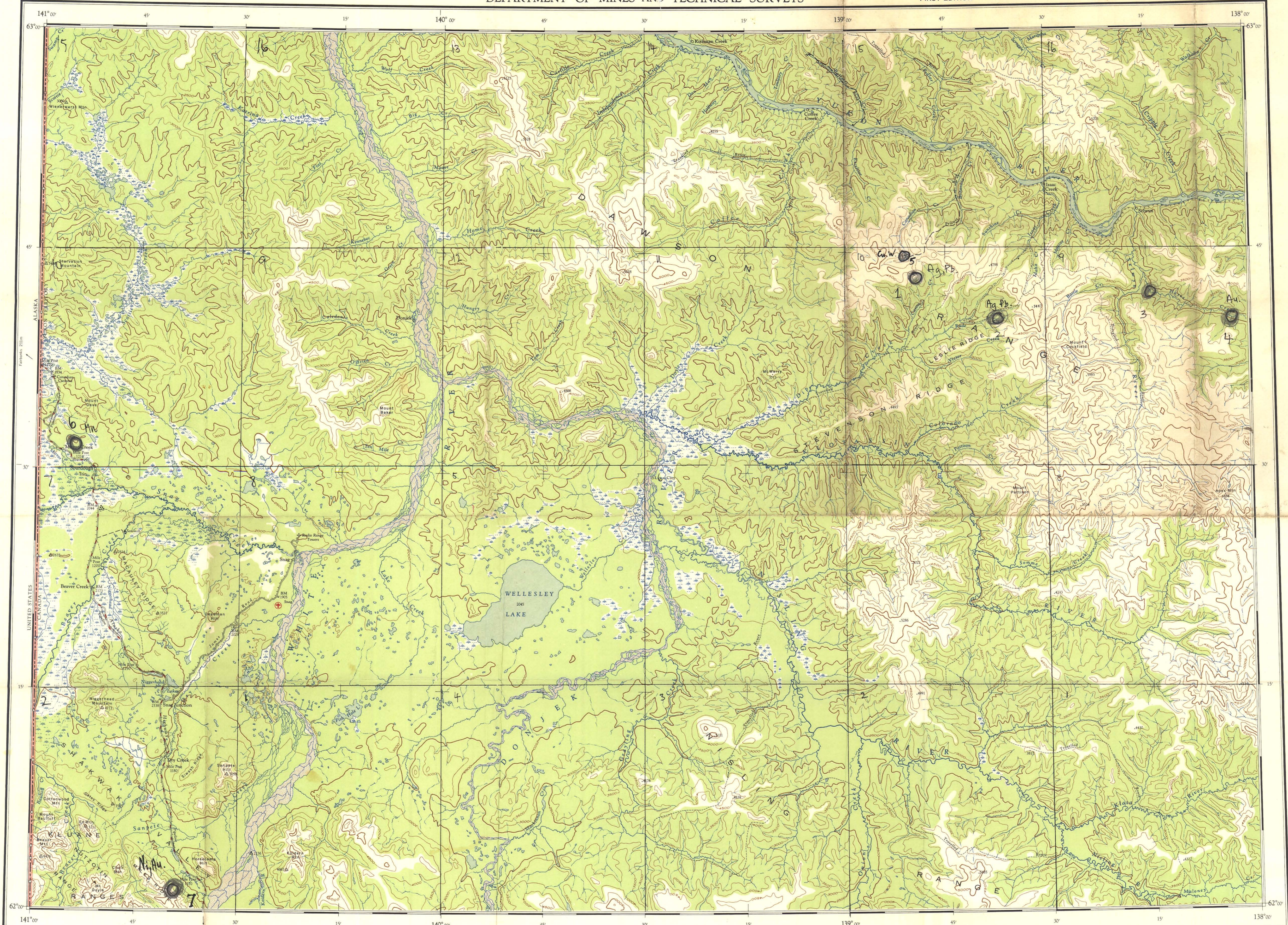


115 J Mineral  
occurrences



Produced by the Surveys and Mapping Branch, Department of Mines and Technical Surveys, 1953, from air photographs taken in 1945 and 1946. Printed by the Army Survey Establishment, R.C.E. Department of National Defence, 1954.

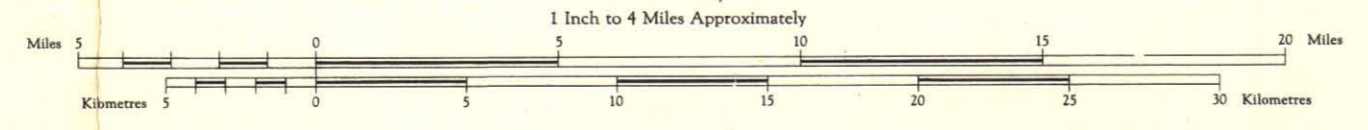
**REFERENCE**

Road, Hard Surface, All Weather	1 Line	Road No. 2 Lines	3 Lines	Road No. 3 Lines	4 Lines
Road, Loose Surface	2 Lines or more	All Weather	1 Line	Trail or Portage	2 Lines
Wagon Road, Cart Track, etc.	2 Lines or more	Trail or Portage	2 Lines	Swamp Track	3 Lines
Railway, Standard Gauge	4 Lines	Swamp Track	3 Lines	Swamp	4 Lines
Boundary, International	1 Line	Swamp	4 Lines	Depression	5 Lines
Boundary, Provincial	2 Lines	Contours, Depression	5 Lines	Contours, Approximate	6 Lines
Boundary, County or District	3 Lines	Contours, Approximate	6 Lines	Spot Elevation, (in feet)	7 Lines
Boundary, Indian Res. Park, etc.	4 Lines	Spot Elevation, (in feet)	7 Lines	Bench Mark	8 Lines
Telephone or Telegraph Line	5 Lines	Bench Mark	8 Lines		

Universal Transverse Mercator Projection

### SNAG YUKON TERRITORY

Scale 1:250,000  
1 Inch to 4 Miles Approximately



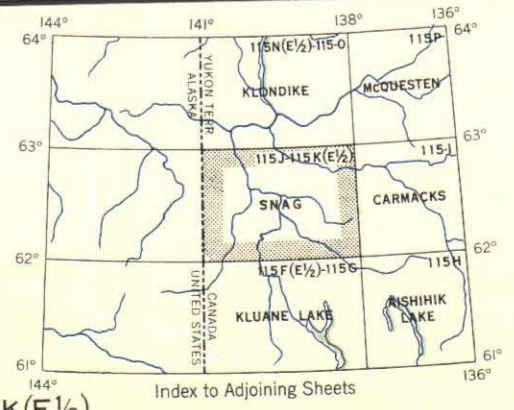
All Elevations in Feet above Mean Sea Level  
Contour interval 500 Feet

Copies may be obtained from the Map Distribution Office, Department of Mines and Technical Surveys, Ottawa, at 25 cents per copy.

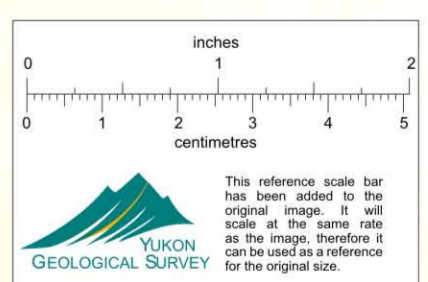
**REFERENCE**

City or Large Town	1	Post Office	P	Boundary Marker	□
Town	2	Building	B	Astronomical Position	○
Village or Settlement	3	Mine	M	Horizontal Control Point	△
Stream, Intermittent or Dry	4	Marsh or Swamp	5	Land Subject to Inundation	6
Stream, Intermittent or Dry	4	Marsh or Swamp	5	Sand, Gravel or Mud	7
Irrigation Canal or Ditch	8	Woods	9	Stream in Dry River Bed	10
Ruins and Falls	11	Woods	9	Stream in Dry River Bed	10
Lake, Intermittent	12	Woods Area	10	Seaplane Base	11
Airport or Airfield	13	Seaplane Base	11		

Placer Occurrences



SNAG Y.T.  
SHEET 115 J & 115 K (E 1/2)  
FIRST EDITION



This reference scale bar has been added to the original image. It will scale at the same rate as the image, therefore it can be used as a reference for the original size.

012210