

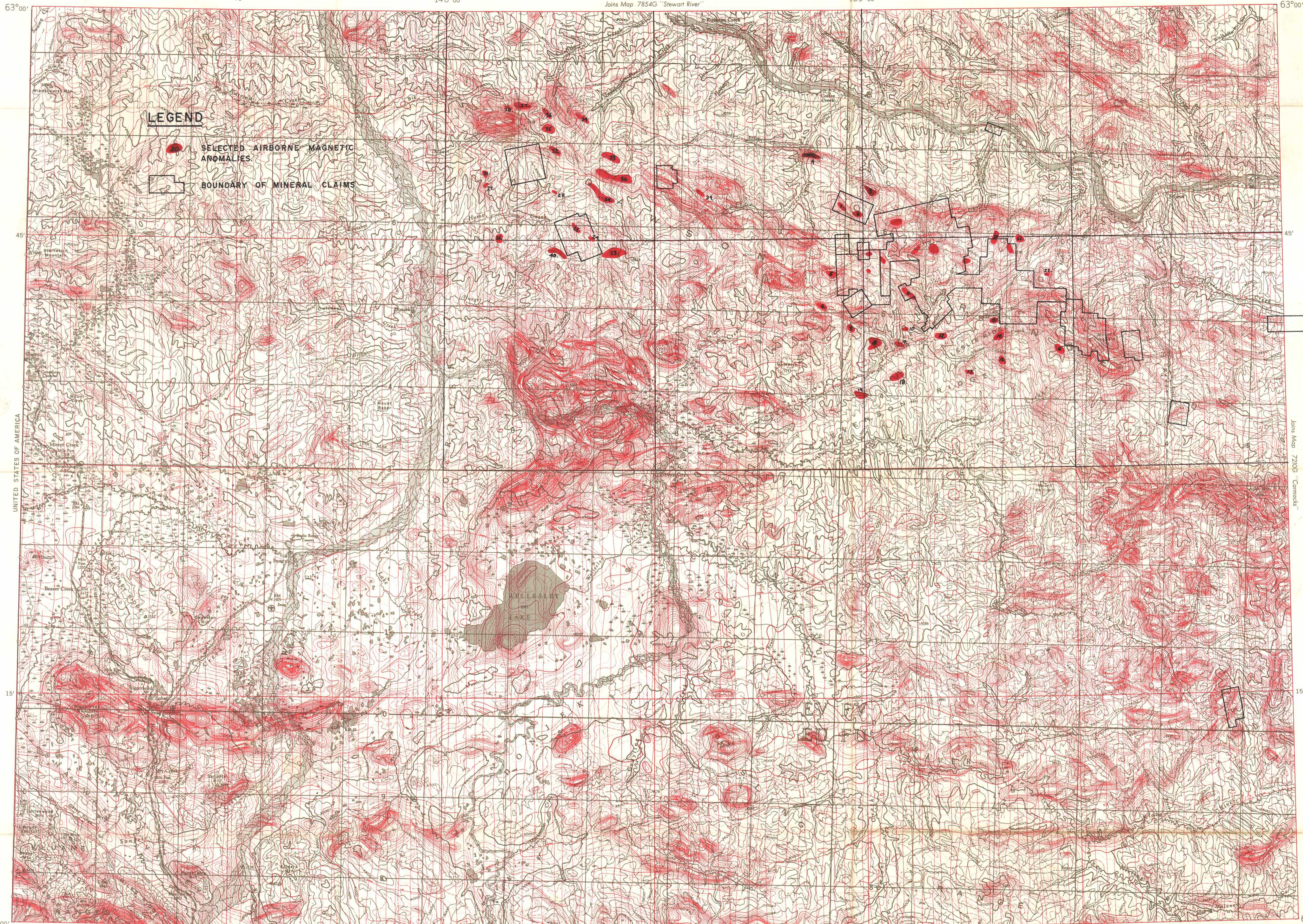


GEOLOGICAL SURVEY OF CANADA
DEPARTMENT OF ENERGY, MINES AND RESOURCES

AEROMAGNETIC SERIES

SHEET 115 J 115 K E 1/2

141°00' 30' 140°00' 139°00' 138°00'

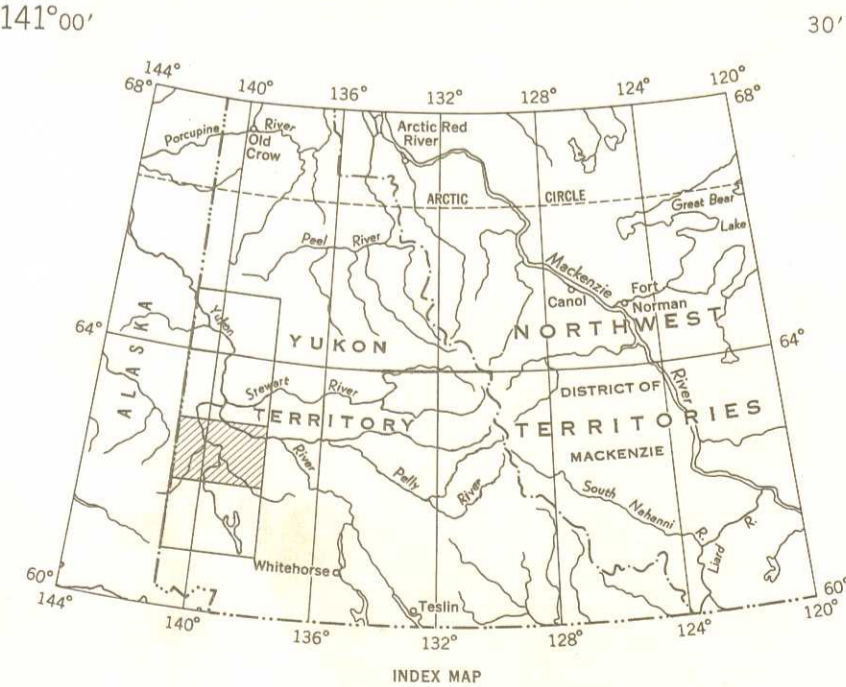


LEGEND

- SELECTED AIRBORNE MAGNETIC ANOMALIES
- BOUNDARY OF MINERAL CLAIMS

UNITED STATES OF AMERICA

UNITED STATES OF AMERICA

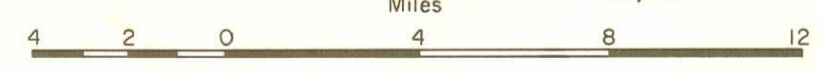


Flight altitude: nominally 1000 feet above ground level where terrain permitted.

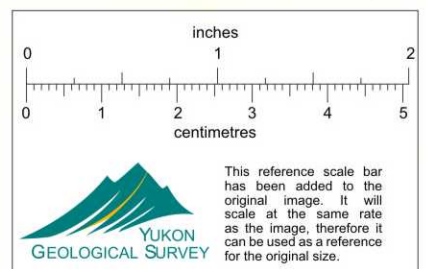
MAP 7840 G

**SNAG
YUKON TERRITORY**

Scale One Inch to Four Miles = $\frac{1}{253,440}$ Miles



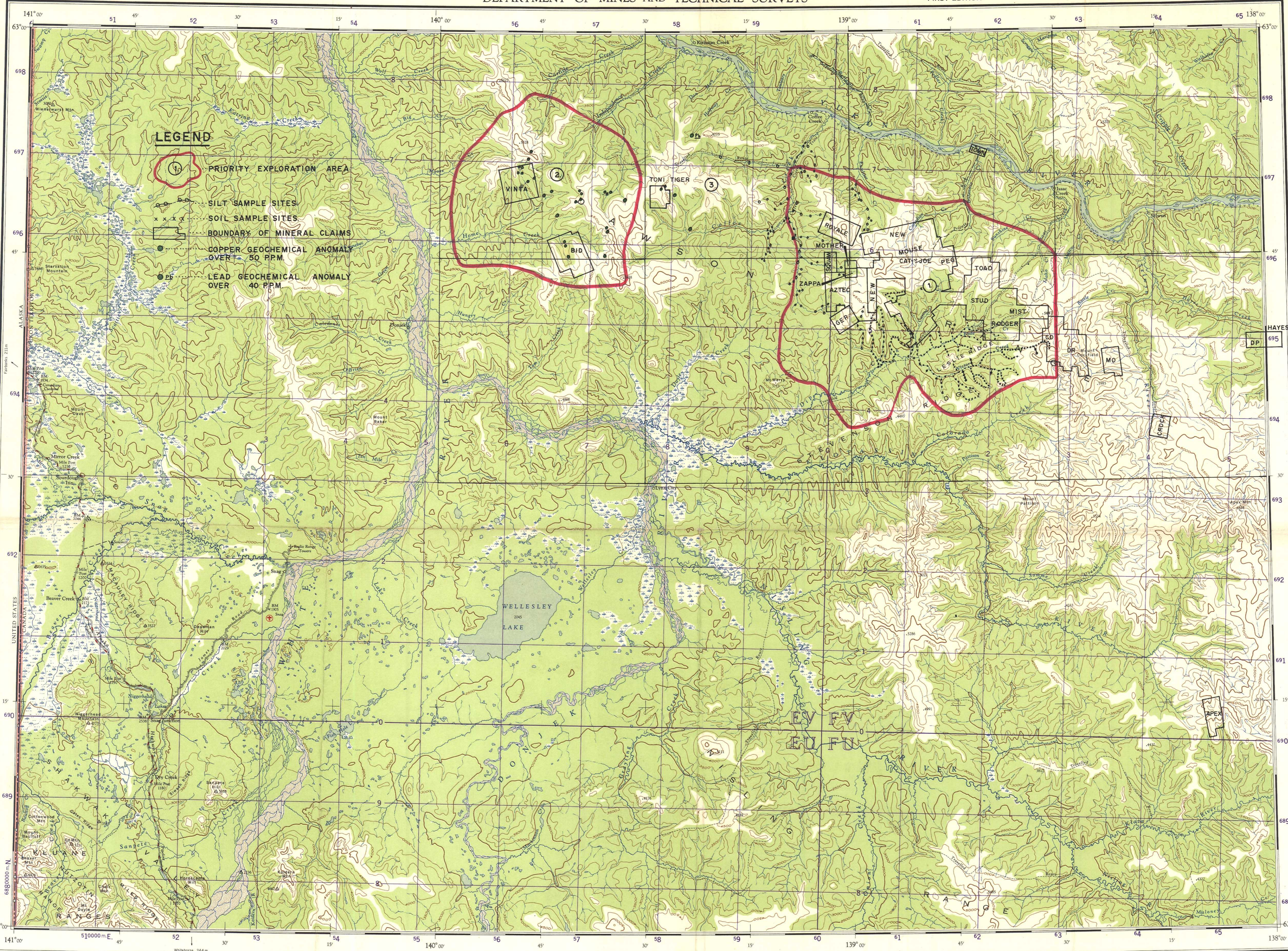
COPIES OF THIS MAP MAY BE OBTAINED FROM THE DIRECTOR, GEOLOGICAL SURVEY OF CANADA OTTAWA



This reference scale bar has been added to the scale at the same ratio as the original. Therefore it can be used as a reference for the original size.

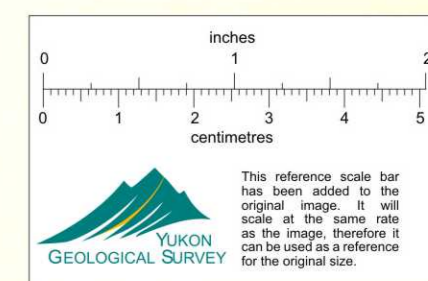
Aeromagnetic Survey, September 1965 to May 1968, by Aero Photo Inc., Québec, four-mile map compiled from one inch to one mile geophysical maps published by the Department of Energy, Mines and Resources. No correction has been made for regional variation.

GEOPHYSICS PAPER 7840G
SNAG
YUKON TERRITORY
SHEET 115 J 115 K E 1/2

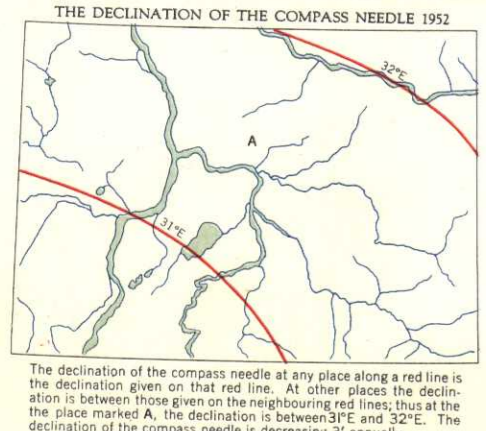


LEGEND

- 1 PRIORITY EXPLORATION AREA
- x SILT SAMPLE SITES
- x SOIL SAMPLE SITES
- BOUNDARY OF MINERAL CLAIMS
- COPPER GEOCHEMICAL ANOMALY OVER 50 PPM
- LEAD GEOCHEMICAL ANOMALY OVER 40 PPM



UNIVERSAL TRANSVERSE MERCATOR GRID			
ZONE 7			
UTM EASTING	UTM NORTHING	YUKON TERRITORY	YUKON TERRITORY
EV	FV	EU	FU
93	93	43	43



Produced by the Surveys and Mapping Branch, Department of Mines and Technical Surveys, 1963, from air photographs taken in 1945 and 1949. Printed by the Army Survey Establishment, R.C.E. Department of National Defence, 1954.

Whitehorse 244 m

UNIVERSAL TRANSVERSE MERCATOR PROJECTION

All Elevations in Feet above Mean Sea Level
Contour Interval 500 Feet

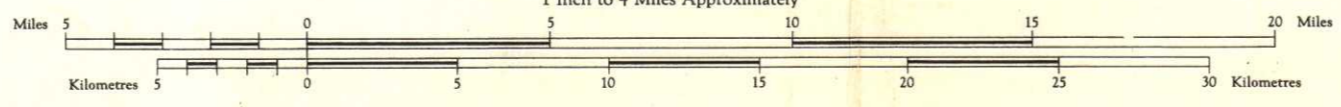
Copies may be obtained from the Map Distribution Office, Department of Mines and Technical Surveys, Ottawa, at 25 cents per copy.

REFERENCE

Road, Hard Surface, All Weather	3 Lanes	4 Lanes	More than 4 Lanes
Road, Loose Surface	3 Lanes or more	4 Lanes or more	More than 4 Lanes
Wagon Road, Cart Track, etc.	Less than 3 Lanes	3 Lanes	4 Lanes or more
Railway, Standard Gauge	Single Track	Double Track	Tripartite
Boundary, International	State	Province	County or District
Boundary, Provincial	County or District	Indian Res. or Park, etc.	None or Telegraph Line
Contour, Approximate	Contour, Elevation	Spot Elevation, in Feet	Spot Elevation, in Meters
Contour, Depression	Spot Elevation, in Feet	Spot Elevation, in Meters	Benck Mark

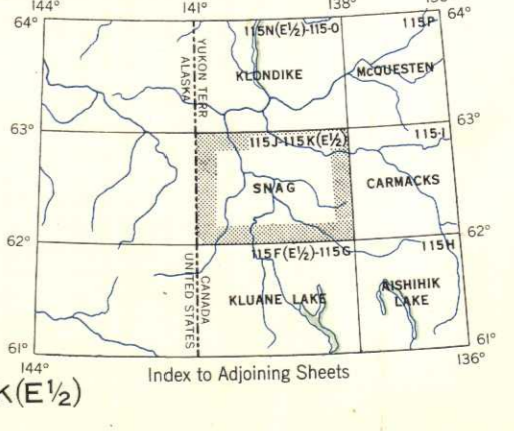
NTS 115 J - 14
13

SNAG
YUKON TERRITORY
Scale 1:250,000
1 Inch to 4 Miles Approximately



REFERENCE

City or Large Town	Post Office	Boundary Marker
Town	Building	Anticlimax Peak
Village or Settlement	Wire	Horizontal Control Point
Stream, Intermittent or Dry	Marsh or Swamp	Land Subject to Inundation
Stream, Intermittent or Unimpaired	Land Subject to Inundation	Irrigation Canal or Ditch
Irrigation Canal or Ditch	Sand, Gravel or Mud	Swamp or Dry River Bed
Roads and Paths	Lake, Intermittent	Wooded Area
Airport or Airfield	Sesuvium Area	



SNAG, Y.T.
SHEET 115 J & 115 K (E 1/2)
FIRST EDITION