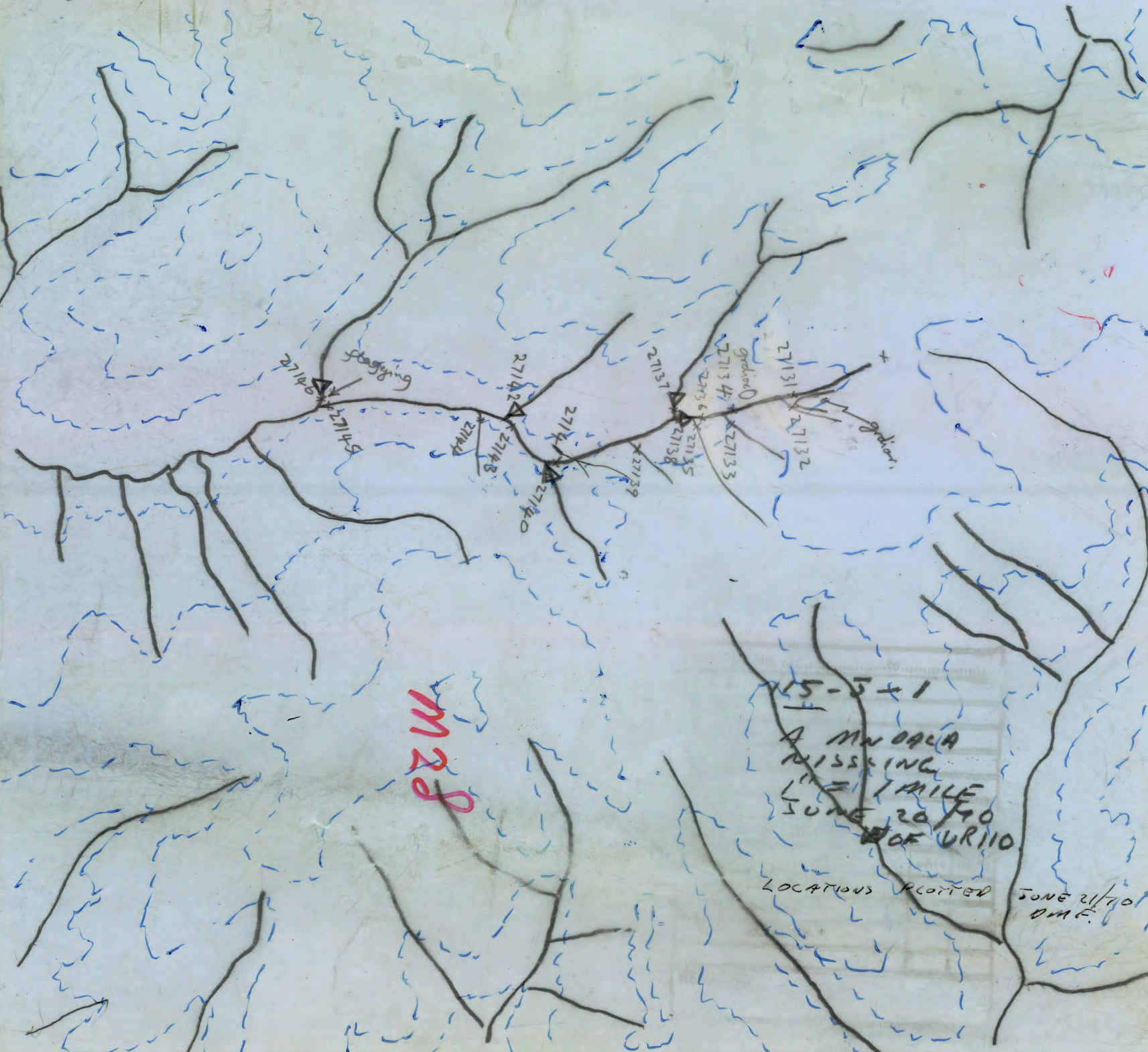


012264



M28

15-5+1  
A MNOOLA  
MISSING  
1/2 MILE  
SOUTH OF UR10  
LOCATIONS PLOTTED  
JUNE 21/70  
D.M.C.

## SILT SAMPLES

MAP (PHOTO) NO. 115-J-1PG. 1

## ATLAS EXPLORATIONS

PROJECT NISLINGSAMPLER A. MNDALADATE 20/6/70

SAMPLE NO.	STREAM WIDTH	FLOW	SAMPLE TEXTURE	ORGANIC MATTER	FLOAT	OUTCROP	NOTES (STAINS, COLOR, SEEPAGES, ETC.)
27131	2'	f	st.	0	granodiorite	-	-
27132	2'	"	"	"	"	-	-
27133	4'	m	st	"	"	-	-
27134	4'	"	"	"	"	-	-
27135	5'	"	"	"	-	-	-
27136	6'	"	"	"	granodiorite	-	-
27137	6'	f	st/water	0	granodiorite feld. porph.	-	-
27138	6'	m	st/water	0	granodiorite	-	-

## SILT SAMPLES

MAP (PHOTO) NO. \_\_\_\_\_

PG. 2

## ATLAS EXPLORATIONS

PROJECT \_\_\_\_\_ SAMPLER \_\_\_\_\_

DATE \_\_\_\_\_

SAMPLE NO.	STREAM WIDTH	FLOW	SAMPLE TEXTURE	ORGANIC MATTER	FLOAT	OUTCROP	NOTES (STAINS, COLOR, SEEPAGES, ETC.)
27139	2½'	m	st.	0	—	—	—
27140	5'	f	st/Water	0	Granodiorite	—	—
27141	7'	f	st.	0	"	—	—
27142	3'	f	st/Water	0	—	—	—
27143	5'	m	st.	0	granodiorite	—	—
27144	3'	f	st-sandy	0	granodiorite, felsite, f.g. diabase/diorite	—	—
27145	10'	m	st.	0+	granodiorite qtz + feld. ephi. diorite	—	—
27146	6'	f	st/Water	0	granodiorite qtz porphy feld. " diorite	—	—



0.5  
0.5  
0.5  
0.5

SAMPLE No.	to
N.T.S.	115-5-2
PHOTO	
SAMPLER	A MNDACA
PROJECT:	NISSLING RIVER
SCALE	1" = 1 MILE
DATE:	JUNE 20/70
GEOGRAPHIC LOCATION:	W OF URNA
SHEET	
SAMPLE LOC. PLOTTED	
REMARKS	

AMAX  
CAMP

NISSLING RIVER

