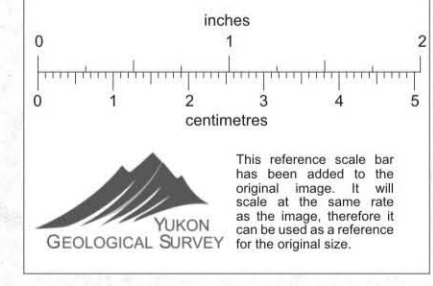
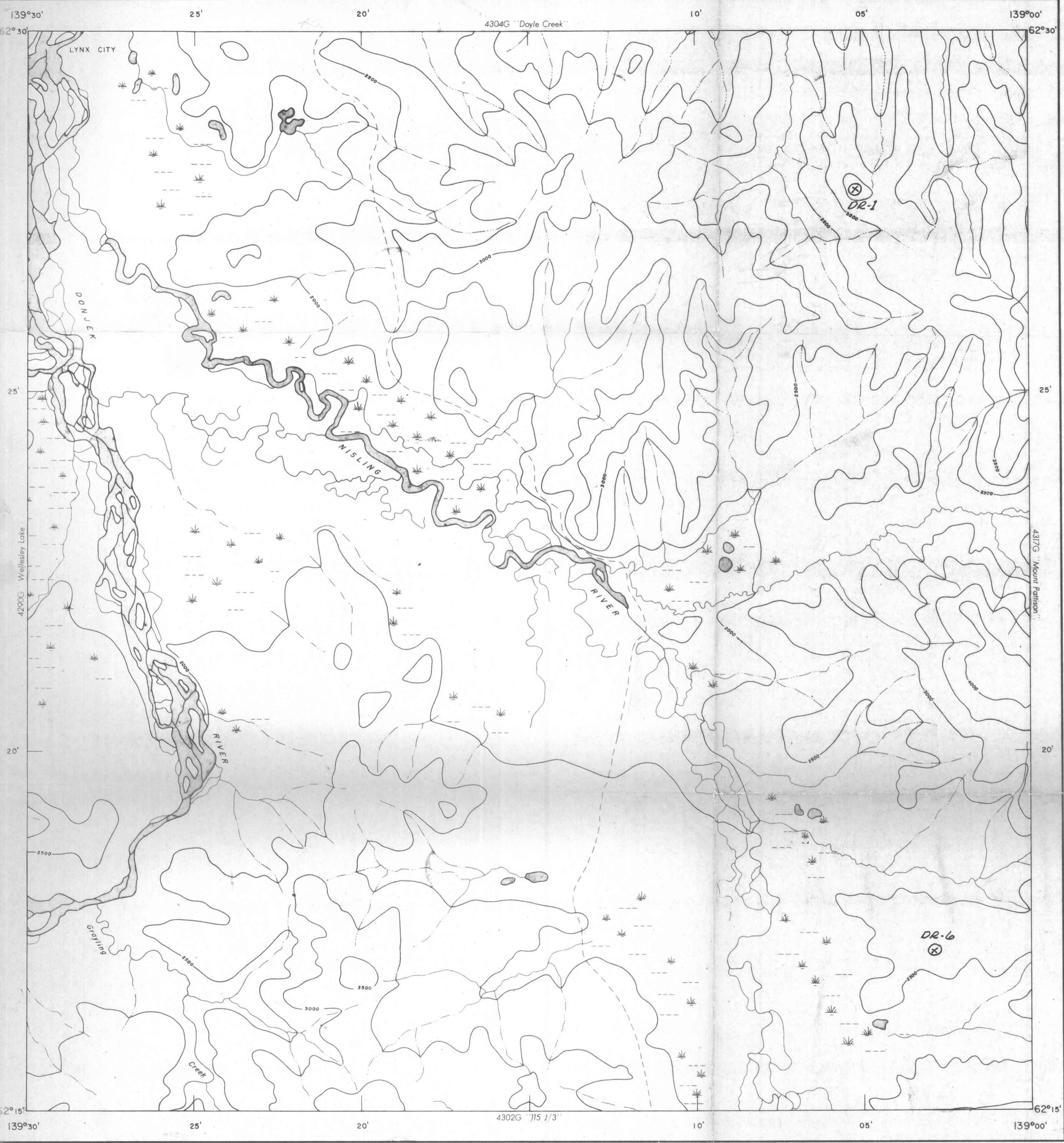


T 70 A



ISOMAGNETIC LINES (absolute total field)

500 gammas

100 gammas

20 gammas

MAP 4303 G

**LYNX CITY**

**YUKON TERRITORY**

Magnetic survey, July to October 1965 by Aero. Photo. Inc.

No correction has been made for regional variation.

The planimetry for this map was obtained from

The magnetic data on this map were compiled from information recorded along the flight lines shown. The anomalies expressed by the magnetic contours are dependent on the variable magnetic intensities of the underlying rocks, and may be due to conditions near, or at unknown depths below the surface. High magnetic anomalies normally indicate the presence of basic rocks, such as diabase, gabbro, or serpentine, which have a relatively high iron content, but in special instances may be due, or partly due, to concentrations of magnetic ore minerals. By means of

012361

Geology 115-J-6