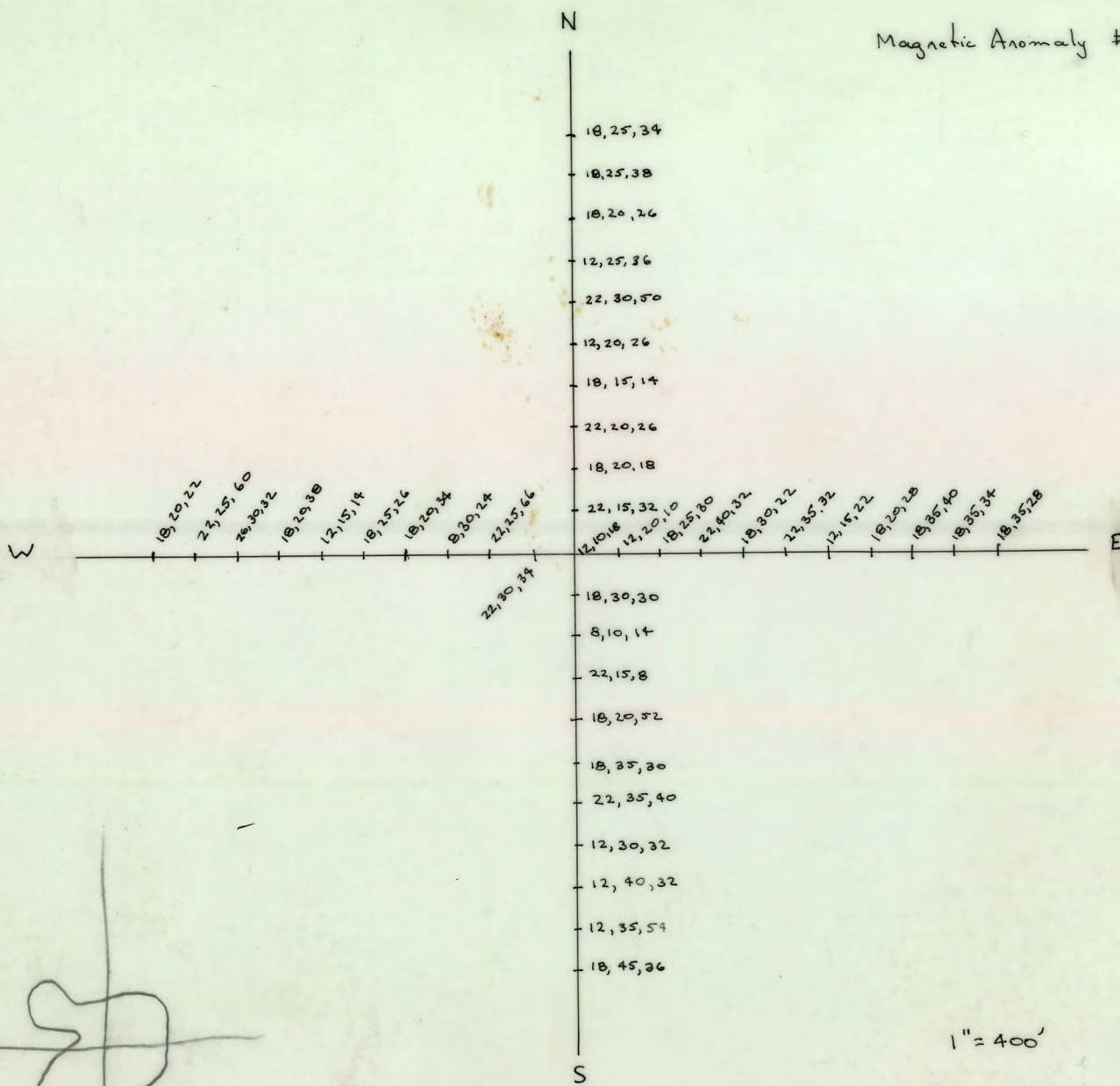


115-J-10

17

Magnetic Anomaly #14



1" = 400'

012465

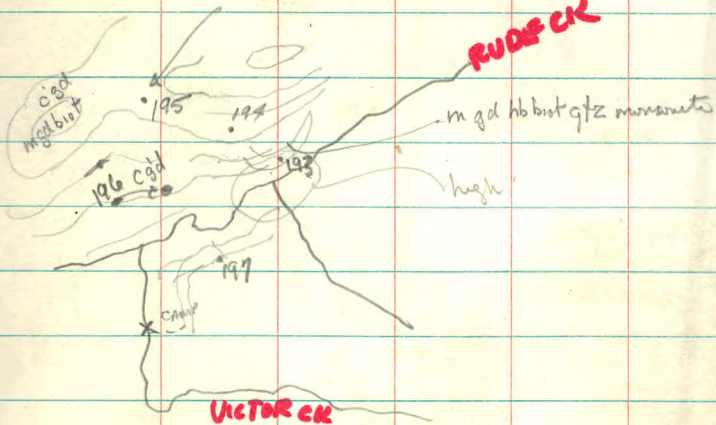
Sept 14/69 KMD Tom Adams

Examination May high near camp.



m-e gcl hb granodiorite

RUDF CR



PLOTTED

MIKE BREMNER

14th Sept. 1969

115-J-10

MB17 → MB41

Scale 1/2 mile = 1 inch.

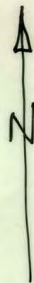


MB42 → 57(w)

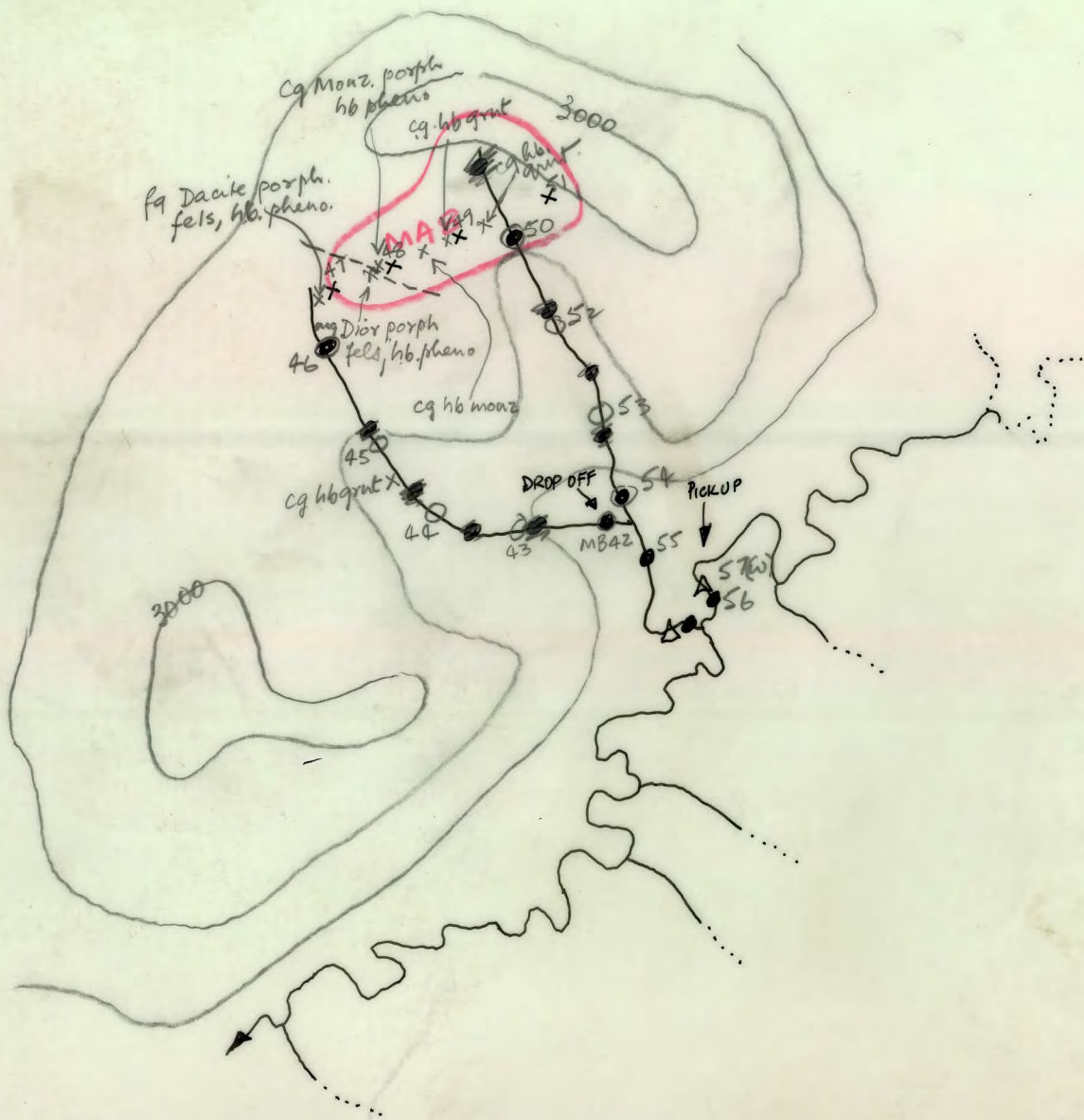
Mike Bremner.

16th Sept. '69

115-J10



Gouter Lishy
★ Camp.



Scale 1/2 mile = 1 inch

PETE FOX

15th Sept 69

115-J10



Scale $\frac{1}{2}$ mile = 1 inch

SEP 15 1969

9X172	SOIL SAMP	BROWN
9X174	SOIL SAMP	BROWN
9X175	SOIL SAMP	BROWN
9X176	SOIL SAMP	GRAY
9X177	SILT SAMP	BROWN
9X178	SILT SAMP	BROWN
9X179	SOIL SAMP	BROWN
9X180	SOIL SAMP	GRAY
9X181	SOIL SAMP	BLACK
9X182	SOIL SAMP	BLACK
9X183	SILT SAMP	GRAY
9X184	SILT SAMP	BROWN
9X185	SILT SAMP	BROWN
9X186	SILT SAMP	BLACK
9X187	SILT SAMP	BLACK
9X188	SILT SAMP	GRAY
9X189	SILT SAMP	GRAY
9X190	SILT SAMP	GRAY
9X191	SILT SAMP	BLACK
9X192	SILT SAMP	GRAY
9X193	SILT SAMP	GRAY
9X194	SILT SAMP	GRAY
9X195	SILT SAMP	GRAY
9X196	WATER SAMP	

9x155 → 9L172

PETE FOX

14th Sept. 69.

115-J10.



Scale 1/2 mile = 1 inch.

SEP 12 169

9X39 TIME 135 SILT SAMP BROWN

150 SILT SAMP BROWN

9X140 TIME

9X141 TIME 155 SILT SAMP GRAY

9X142 TIME 205 SILT SAMP GRAY

9X143 TIME 220 SILT SAMP BROWN

9X144 TIME 235 SILT SAMP BLACK

9X145 TIME 245 SILT SAMP GRAY

9X146 TIME 255 SILT SAMP GRAY

9X147 TIME 259 SILT SAMP BROWN

9X148 TIME 305 SILT SAMP BLACK

9X149 TIME 320 SILT SAMP BROWN

9X150 TIME 325 SILT SAMP BROWN

9X151 TIME 335 SILT SAMP BLACK

SEP 12 1969

9X152 TIME 345 SILT SAND BROWN

9X153 TIME 3355 SILT SAND BROWN

9X154 TIME 440 SILT SAND BROWN

SEP 16 1969

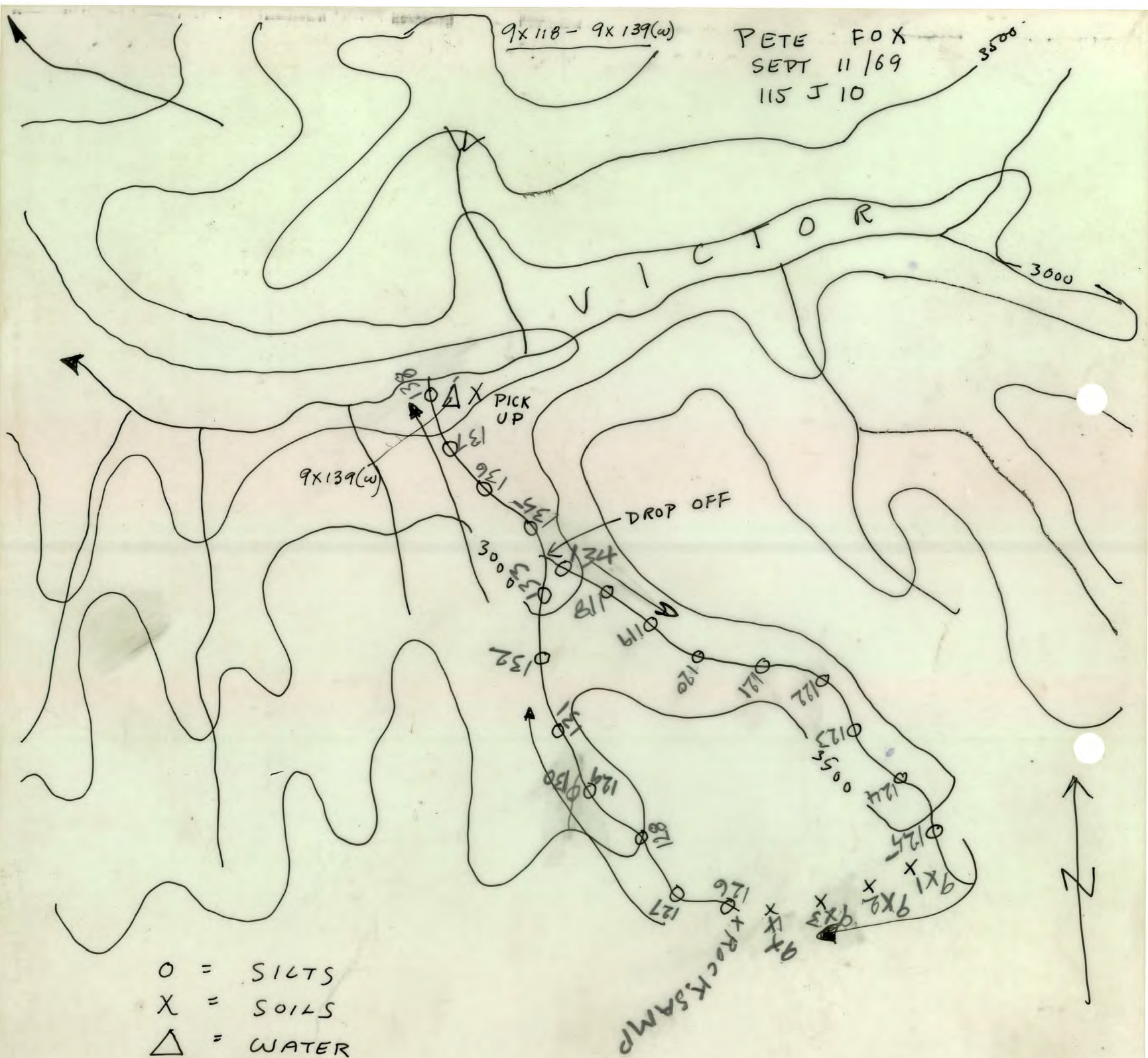
9X199	SILT	SAMP	GRAY
9X200	WATER		
9X201	SILT	SAMP	BLACK
9X202	SILT	SAMP	BLACK
9X203	SILT	SAMP	BLACK
9X204	SILT	SAMP	BLACK
9X205	SILT	SAMP	BLACK
9X206	SILT	SAMP	BLACK
9X207	SILT	SAMP	BLACK
9X208	SILT	SAMP	BLACK
9X209	SOIL	SAMP	GRAY
9X210	SOIL	SAMP	BROWN
9X211	SOIL	SAMP	BLACK
9X212	SILT	SAMP	GRAY
9X213	SILT	SAMP	GRAY
9X214	SILT	SAMP	GRAY
9X215	SILT	SAMP	GRAY
9X216	SILT	SAMP	BLACK
9X217	SILT	SAMP	BLACK
9X218	SILT	SAMP	BLACK
9X219	SILT	SAMP	BLACK

PETER FOX
SEPT 16/69
115 J 10



9x118 - 9x139(w)

PETE FOX
SEPT 11/69
115 J 10



SEP 11/69

9X118 TIME 950 SILT SAMP BROWN

9X119 TIME 10.05 SILT SAMP BLACK

9X120 TIME 10 15 SILT SAMP BROWN

9X121 TIME 10 25 SILT SAMP BROWN

9X122 TIME 10 40 SILT SAMP BROWN

9X123 TIME 10 55 SILT SAMP BROWN

9X124 TIME 11 20 SILT SAMP BROWN

9X125 TIME 11 30 SILT SAMP BLACK

9X126 TIME 1 15 SILT SAMP GRAY

9X127 TIME 1 35 SILT SAMP BROWN

9X128 TIME 1 45 SILT SAMP BROWN

9X129 TIME 2 10 SILT SAMP BLACK

9X130 TIME 2.20 SILT SAMP BLACK

SEP 11 1869

- 9X1 SOILS SAMP BROWN - NO 1
9X2 SOILS SAMP BROWN NO 2
9X3 SOILS SAMP BROWN N 3
9X4 SOILS SAMP BROWN N 4
-

SEP 11 1869

- 9X131 TIME 235 SILT SAMP GRAY
9X132 TIME 250 SILT SAMP BLACK
9X133 TIME 305 SILT SAMP GRAY
9X134 TIME 310 SILT SAMP GRAY
9X135 TIME 325 SILT SAMP BROWN
9X136 TIME 340 SILT SAMP BLACK
9X137 TIME 355 SILT SAMP BROWN
9X138 TIME 405 SILT SAMP BROWN

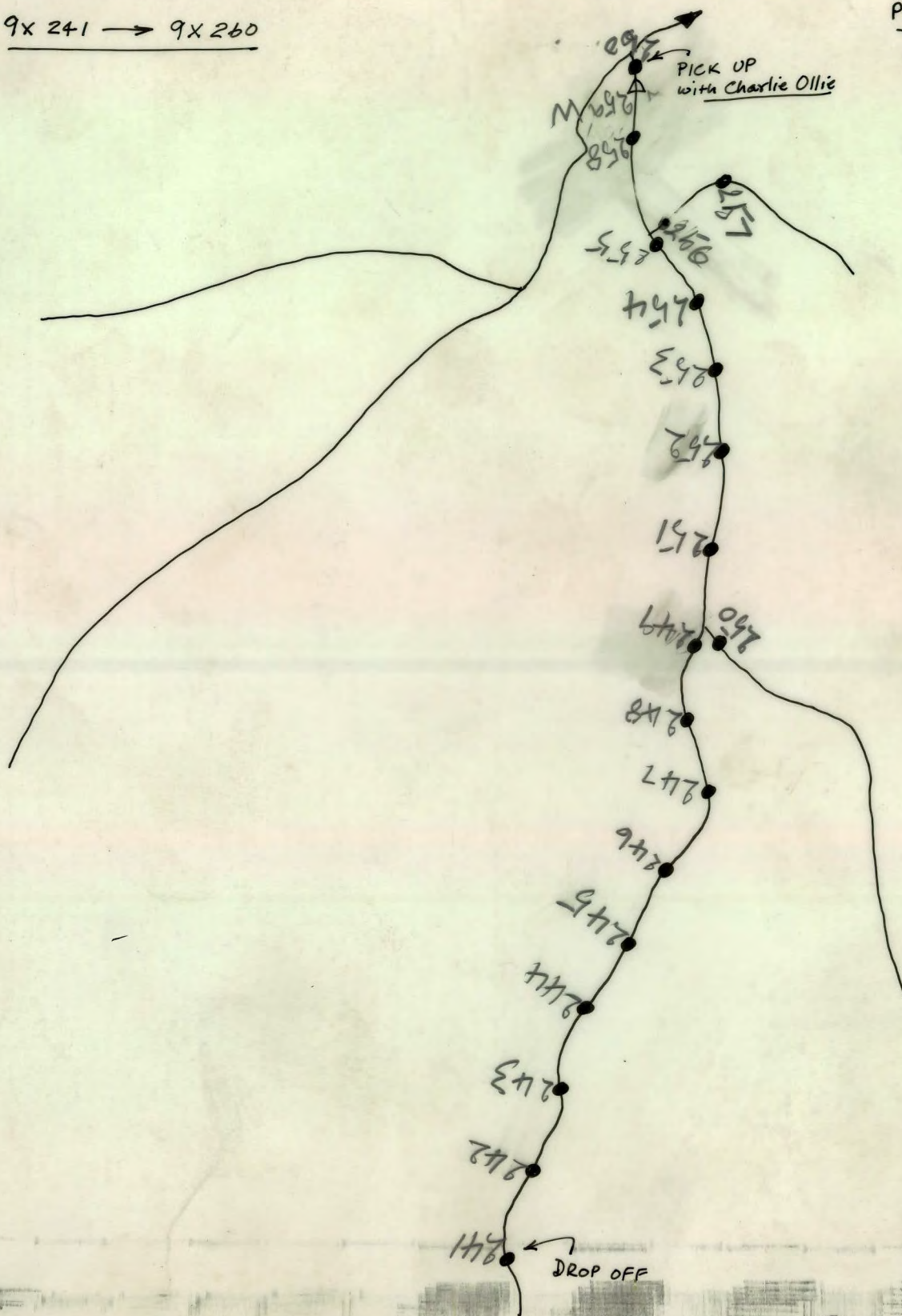
9x 241 → 9x 260

PETE FOX

18th Sept '69

115-J-10

115-J-15

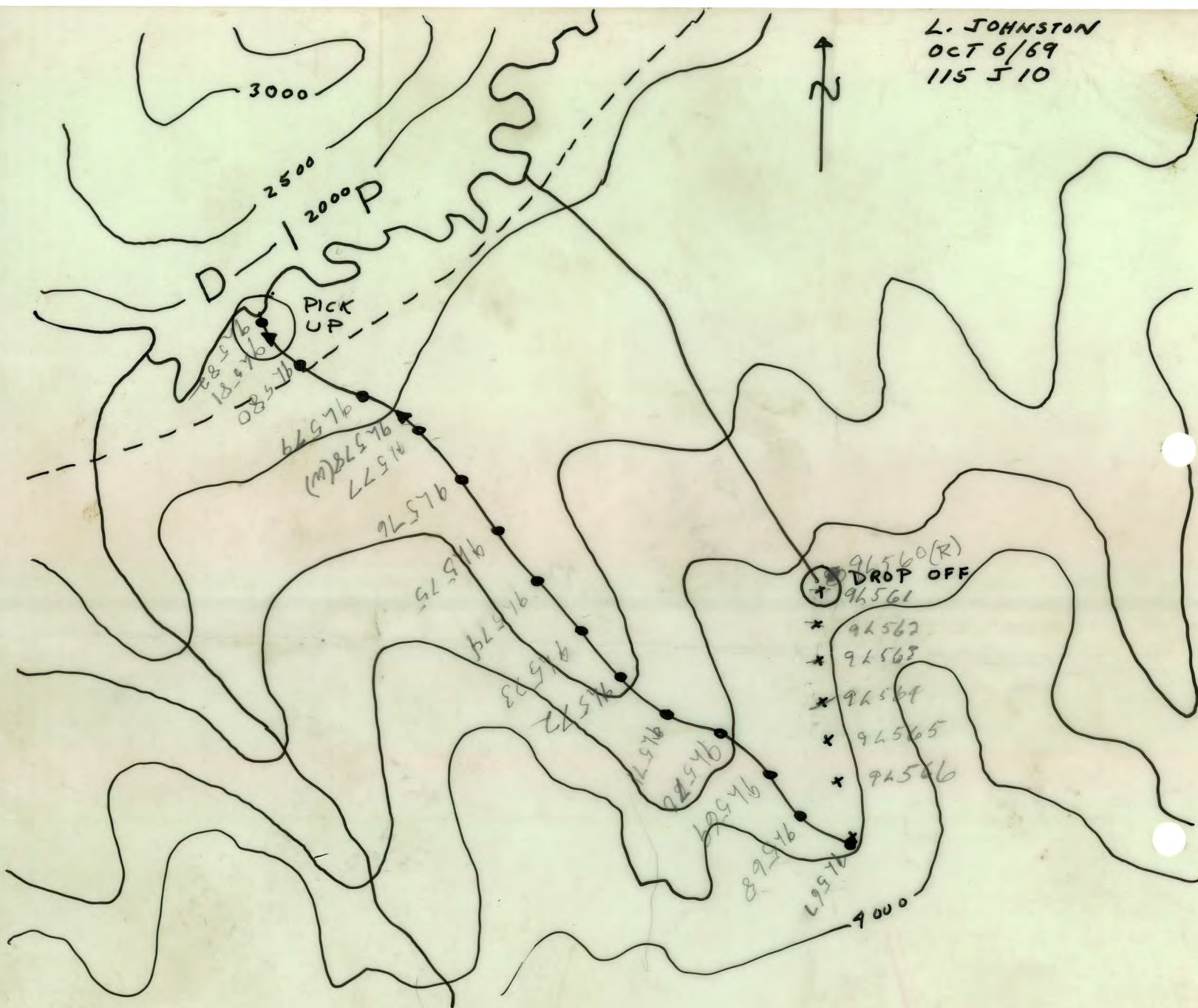


Scale 1/2 mile = 1 inch

SEP 18 1969

9x241	SILT	SAMP	GRAY
9x242	SILT	SAMP	BROWN
9x243	SILT	SAMP	BROWN
9x244	SILT	SAMP	BROWN
9x245	SILT	SAMP	BROWN
9x246	SILT	SAMP	BROWN
9x247	SILT	SAMP	BROWN
9x248	SILT	SAMP	BLACK
9x249	SILT	SAMP	BROWN
9x250	SILT	SAMP	BROWN
9x251	SILT	SAMP	BROWN
9x252	SILT	SAMP	BROWN
9x253	SILT	SAMP	BROWN
9x254	SILT	SAMP	BROWN
9x255	SILT	SAMP	BROWN
9x256	SILT	SAMP	BROWN
9x257	SILT	SAMP	BROWN
9x258	SILT	SAMP	BROWN
9x259	WATER		
9x260	SILT	SAMP	

L. JOHNSTON
OCT 6/69
115 510



Plotted on 1 mile
grid

LIVINGSTON JOHNSON

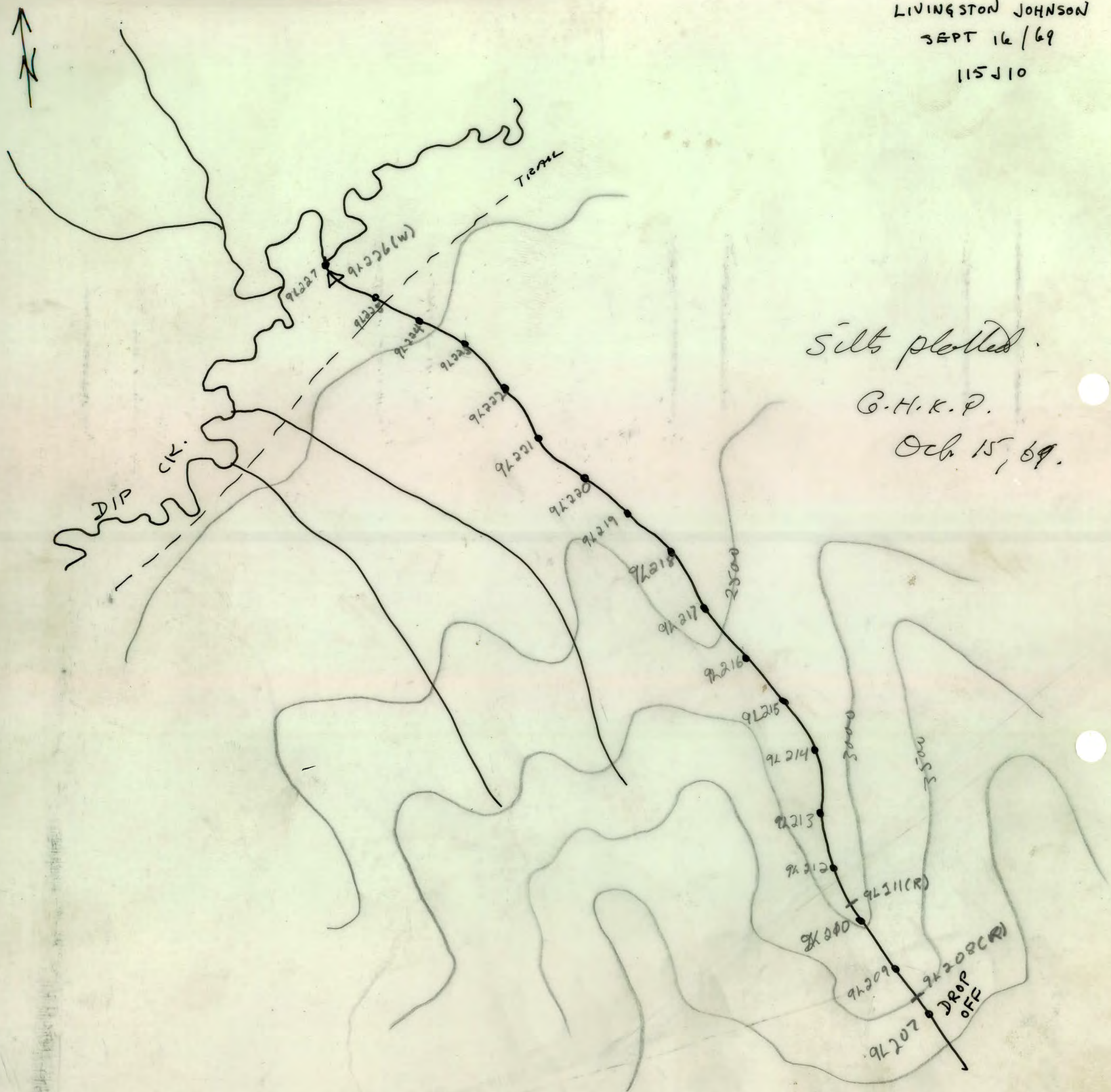
SEPT 16/69

115510

Silts plotted.

G.H.K.P.

Oct. 15, 69.



Sept 16

9h207 Wide 4 FT
 Depth 1 1/2 FT
 Sed Color Black
 Fast Current

9h208 Rock Sample

9h209 Wide 4 FT
 Depth 6 in
 Sed Color Black
 Fast Current

9h210 Wide 4 FT
 Depth 1 FT
 Sed Color
 Fast Current

9h211 Rock Sample

9h212 Wide 4 FT
 Depth 1 FT
 Sed Color Black
 Fast Current

Sept 16

9h213

Wide

4 FT

Depth

1 FT

Sed Color Black

Fast Current

9h214

Wide

4 FT

Depth

1 FT

Sed Color Brown

Med Current

9h215

Wide

5 FT

Depth

2 FT

Sed Color Brown

Med Current

9h216

Wide

5 FT

Depth

2 FT

Sed Color Black

Med Current

9h217

Wide

4 FT

Depth

1 FT

Sed. Color Black

Med Current

			Sept	16
9h 218	Wide		4	FT
	Depth		2	FT
	Seed Color			Brown
	Med Current			
9h 219	Wide		3	FT
	Depth		1	FT
	Seed Color			Brown
	Med Current			
9h 220	Wide		8	FT
	Depth		2	FT
	Seed Color			Brown
	Med Current			
9h 221	Wide		4½	FT
	Depth		1½	FT
	Seed Color			Brown
	Med Current			
9h 222	Wide		4	FT
	Depth		2	FT
	Seed Color			Brown
	Med Current			

		Sept	16
91223	Wide	3	FT
	Depth	6	17
	Sed Color		Grey
	Med Current		
91224	Wide	3	FT
	Depth	1	FT
	Sed Color		Brown
	Med Current		
91225	Wide	4	FT
	Depth	1	FT
	Sed Color		Brown
	Med Current		
91226	Water Sample		
	Wide	4	FT
	Depth	1	FT
	Med Current		
91227	Wide	3	FT
	Depth	1	FT
	Sed Color		Brown
	Med Current		

9L136 → 9L150

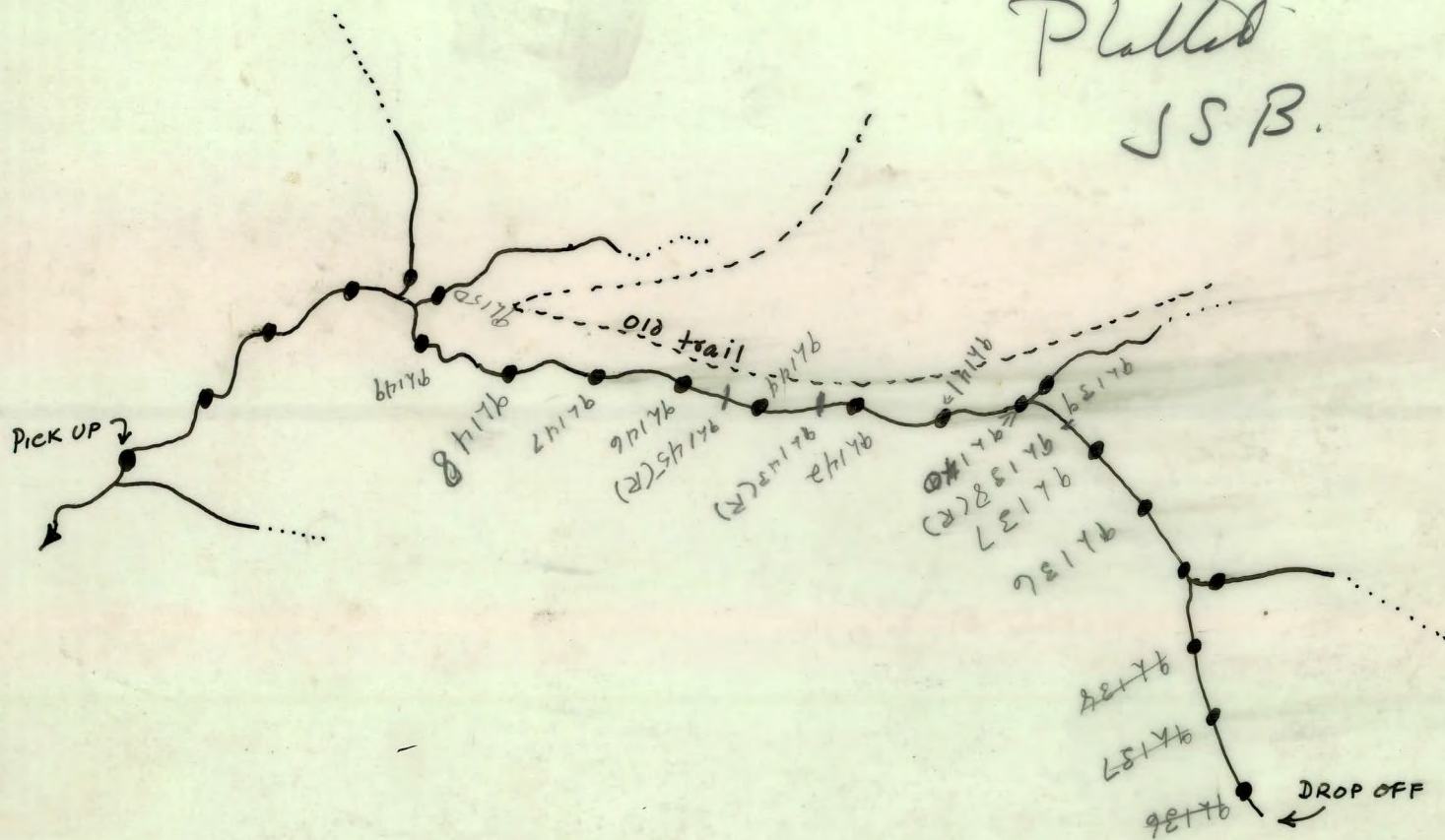
LIVINGSTON JOHNSON

12th Sept. '69.

115-J-10.



Plotted
J.S.B.



Scale 1/2 mile = 1 inch

Sept 12
9h136 Wide 8 FT
Depth 1½ FT
Sed Color Red
Fast Current

9h137 Wide 8 FT
Depth 1½ FT
Sed Color Red
Fast Current

9h138 Rock Sample

9h139 Wide 3 FT
Depth 1 FT
Sed Color Red
Fast Current

9h140 Wide 15 FT
Depth 2 FT
Sed Color Red
Fast Current

Sept 12

9h141 Wide 10 FT
 Depth 1 FT
 Sed Color Red
 Fast Current

9h142 Wide 15 FT
 Depth 1 FT
 Sed Color Red
 Med Current

9h143 Rock Sample

9h144 Wide 12 FT
 Depth 1 FT
 Sed Color Red
 Med Current

9h145 Rock Sample

9h146 Wide 10 FT
 Depth 1 FT
 Sed Color Red
 Med Current

Sept 12

9h147 Wide 10 FT
 Depth 1 FT
 Sed. Color Red
 Med. Current

9h148 Wide 8 FT
 Depth 1 1/2 FT
 Sed. Color Red
 Med. Current

9h149 Wide 10 FT
 Depth 2 FT
 Sed. Color Red
 Med. Current

9h150 Wide 8 FT
 Depth 2 FT
 Sed. Color Red
 Fast Current

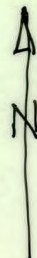
9L 151 → 9L 179

LIVINGSTON JOHNSON

14th Sept. 1969

115 - J10

Plotted
J.S.B.



Scale 1/2 mile = 1"

SEP 14/69

9X155 SILT SAMP BROWN

9X156 SILT SAMP GRAY

9X157 SILT SAMP BLACK

?

9X158 SILT SAMP BLACK

9X159 WATER SAMP

9X160 SILT SAMP BLACK

9X161 SILT SAMP BLACK

9X162 SILT SAMP BLACK

9X163 SILT SAMP BLACK

9X164 SILT SAMP GRAY

9X165 ROCK SAMP

9X166 SILT SAMP BLACK

9X167 SILT SAMP BLACK

9X168 SILT SAMP BLACK

9X169 SILT SAMP GRAY

9X170 SILT SAMP GRAY

9X171 SILT SAMP BLACK

9X172 SILT SAMP BLACK

9L110 - 9L135(w)

LIVINGSTON

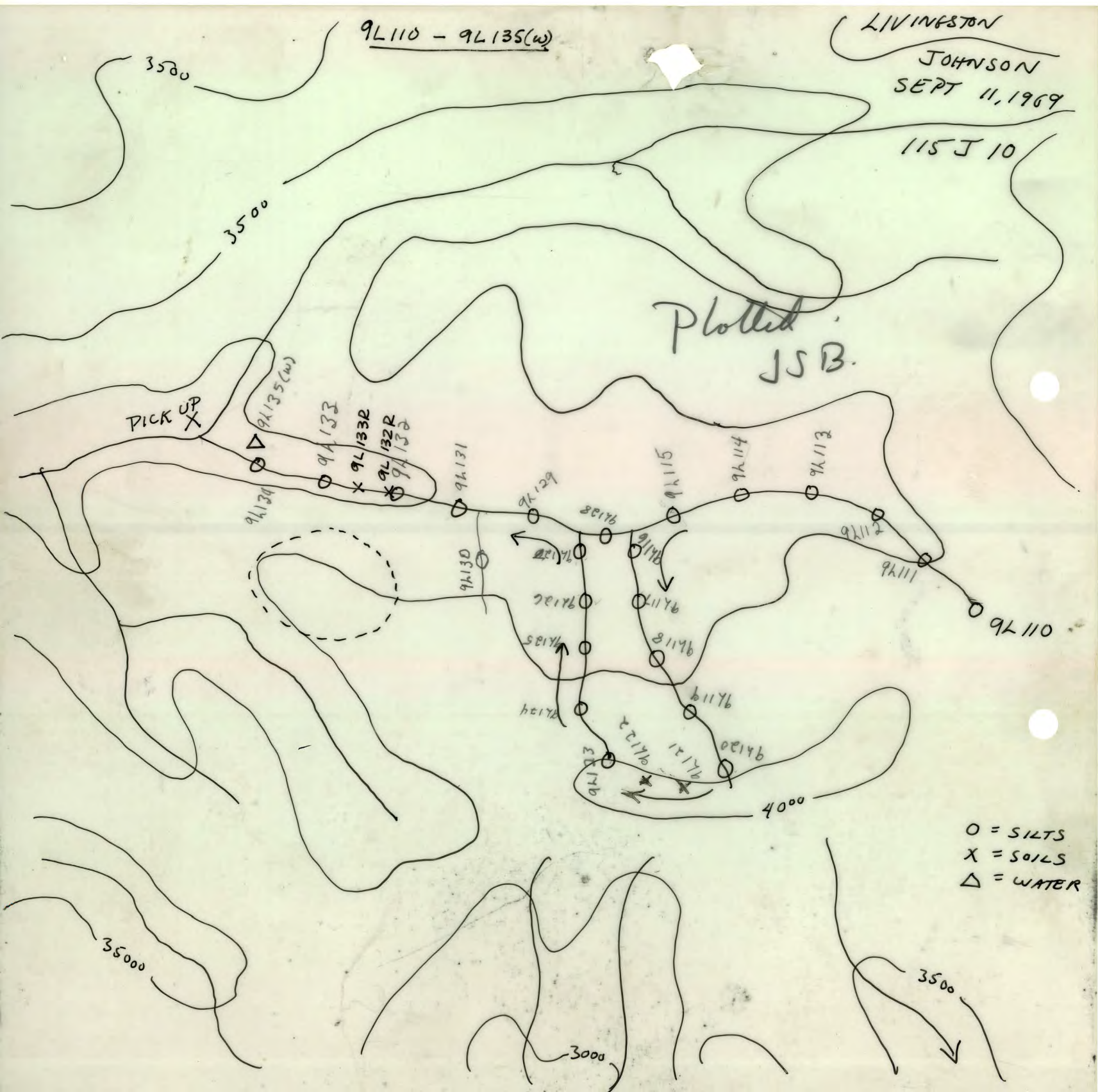
JOHNSON
SEPT 11, 1969

115 J 10

Plotted
JSB.

PICK UP
X

O = SILTS
X = SOILS
Δ = WATER



		Sept 11	
9L110	Wide	2	FT
	Depth	1	FT
	Sed Color		Red
	Med Current		
9L111	Wide	2	FT
	Depth	1	FT
	Sed Color		Red
	Med Current		
9L112	Wide	4	FT
	Depth	2	FT
	Sed Color		Red
	Fast Current		
9L113	Wide	4	FT
	Depth	1	FT
	Sed. Color		Red
	Fast Current		
9L114	Wide	3	FT
	Depth	2	FT
	Sed. Color		Red
	Med Current		

		Sept 11	
9h115	Wide	5	FT
	Depth	2	FT
	Sed. Color		Red
	Fast Current		
9h116	Wide	2	FT
	Depth	1	FT
	Sed. Color		Red
	Fast Current		
9h117	Wide	2	FT
	Depth	1½	FT
	Sed. Color		Red
	Fast Current		
9h118	Wide	2	FT
	Depth	1½	FT
	Sed. Color		Red
	Fast Current		
9h119	Wide	2	FT
	Depth	1	FT
	Sed. Color		Red
	Fast Current		

Sept 11

- 94120 Wide 2 FT
Depth 1 FT
Sed. Color Red
Fast Current
- 94121 Soil Sample
Sed. Color Black
- 94122 Soil Sample
Sed. Color Black
- 94123 Wide 2 FT
Depth 1 FT
Sed. Color Red
Fast Current
- 94124 Wide 2 FT
Depth 1 FT
Sed. Color Red
Fast Current
- 94125 Wide 2 FT
Depth 1 FT
Sed. Color Red
Fast Current

		Sept	11
9h126	Wide	2	FT
	Depth	1	FT
	Sed. Color		Red
	Fast Current		
9h127	Wide	2	FT
	Depth	1	FT
	Sed. Color		Red
	Fast Current		
9h128	Wide	6	FT.
	Depth	1	FT
	Sed. Color		Red
	Med. Current		
9h129	Wide	5	FT
	Depth	1	FT
	Sed. Color		
	Fast Current		
9h130	Wide	3	FT
	Depth	1	FT
	Sed. Color		Red
	Fast Current		

Sept 11

9h131 Wide 15 FT
 Depth 2 FT
 Seed Color Red
 Fast Current

9h132 Wide 10 FT
 Depth 1 FT
 Seed Color Red
 Fast Current

9h133 Wide 9 FT
 Depth 1 FT
 Seed Color Red
 Fast Current

9h134 Wide 10 FT
 Depth 1 1/2 FT
 Seed Color Red
 Med. Current

9h135 Water Sample
 Wide 10 FT
 Depth 1 1/2 FT
 Med. Current

9L180 → 9L206

LIVINGSTON JOHNSON

15th Sept. 1969

115-J10.



Silt'sail Plotted.



Scale 1/2 mile = 1 inch

		Sept	15
9h180	Wide	1	FT
	Depth	1	FT
	Sed. Color		Black
	Still water		
9h181	Wide	1	FT
	Depth	1	FT
	Sed. Color		Brown
	still water		
9h182	Width	1	FT
	Depth	1	FT
	Sed. Color		Black
	Slow Current		
9h183	Wide	1	FT
	Depth	1	FT
	Sed. Color		Brown
	Still water		
9h184	Wide	1	FT
	Depth	6	in.
	Sed. Color		Brown
	Still water		

			Sept 15
9h185	Width		1 FT
	Depth		1 FT
	Sed. Color		Brown
	Dry Bed		
9h186	Width		6 in
	Depth		6 in
	Sed. Color		Black
	Dry Bed		
9h187	Width		
	Dry Bed		
	Sed. Color		Black
9h188	Soil Sample		
	Sed. Color		Brown
9h189	Soil Sample		
	Sed. Color		Brown
9h190	Width		1 FT
	Depth		1 FT
	Sed. Color		Brown
	Still water		

Sept 15
9h/191 wide 1 FT
Depth 6 in
Seed Color Brown
Still water

9h/192 wide 6 in
Depth 6 in
Seed Color Brown
Still water

9h/193 wide 1 FT
Depth 1 FT
Seed Color Brown
still water

9h/194 wide 1 FT
Depth 1 FT
Seed Color Black
still water

9h/195 wide 6 in
Depth 6 in
Seed Color Black
Still water

Sept 15

9h201 Wide 20 FT
 Depth 5 FT
 Sed Color Brown
 Med Current

9h202 ^{water sample} Wide 20 FT
 Depth 5 FT
 Med. Current

9h203 ^{water sample} Wide 20 FT
 Depth 5 FT
 Med Current

9h204 Wide 20 FT
 Depth 5 FT
 Sed Color Brown
 Med Current

9h205 Wide 20 FT
 Depth 4 FT
 Sed Color Brown
 Med Current

Sept 15

9h206

Wale

30 FT

Depth

4 FT

Sed Color

Brown

Med Current

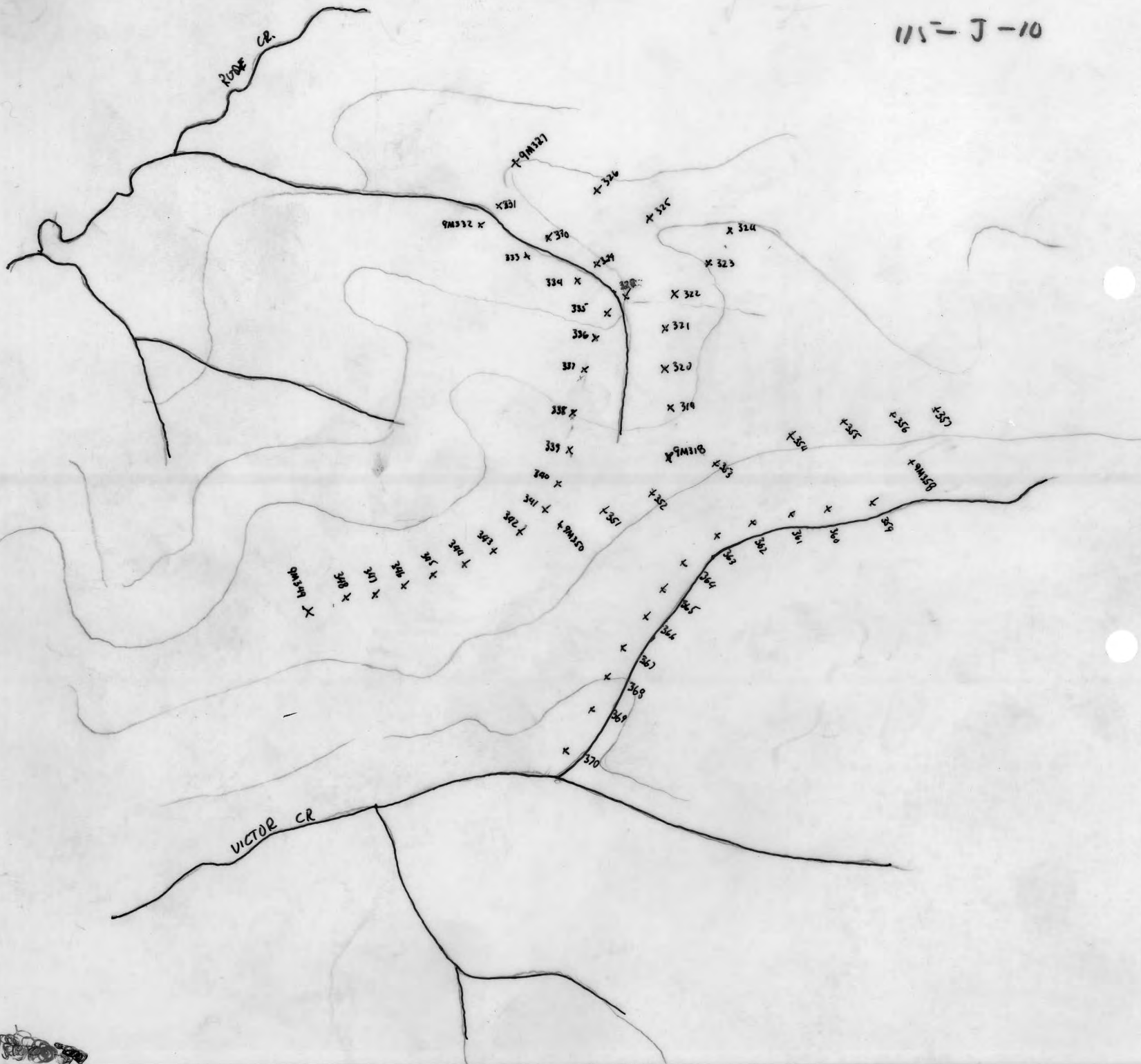
SOILS

SAM MILGOD

SEPT-15/69

9M318 - 9M370

115-J-10

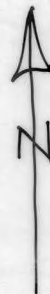


9M ³⁰⁵306 → 317

SAM MCLEOD

12th Sept. 69

115-J-10



Scale 1/2 mile = 1 inch

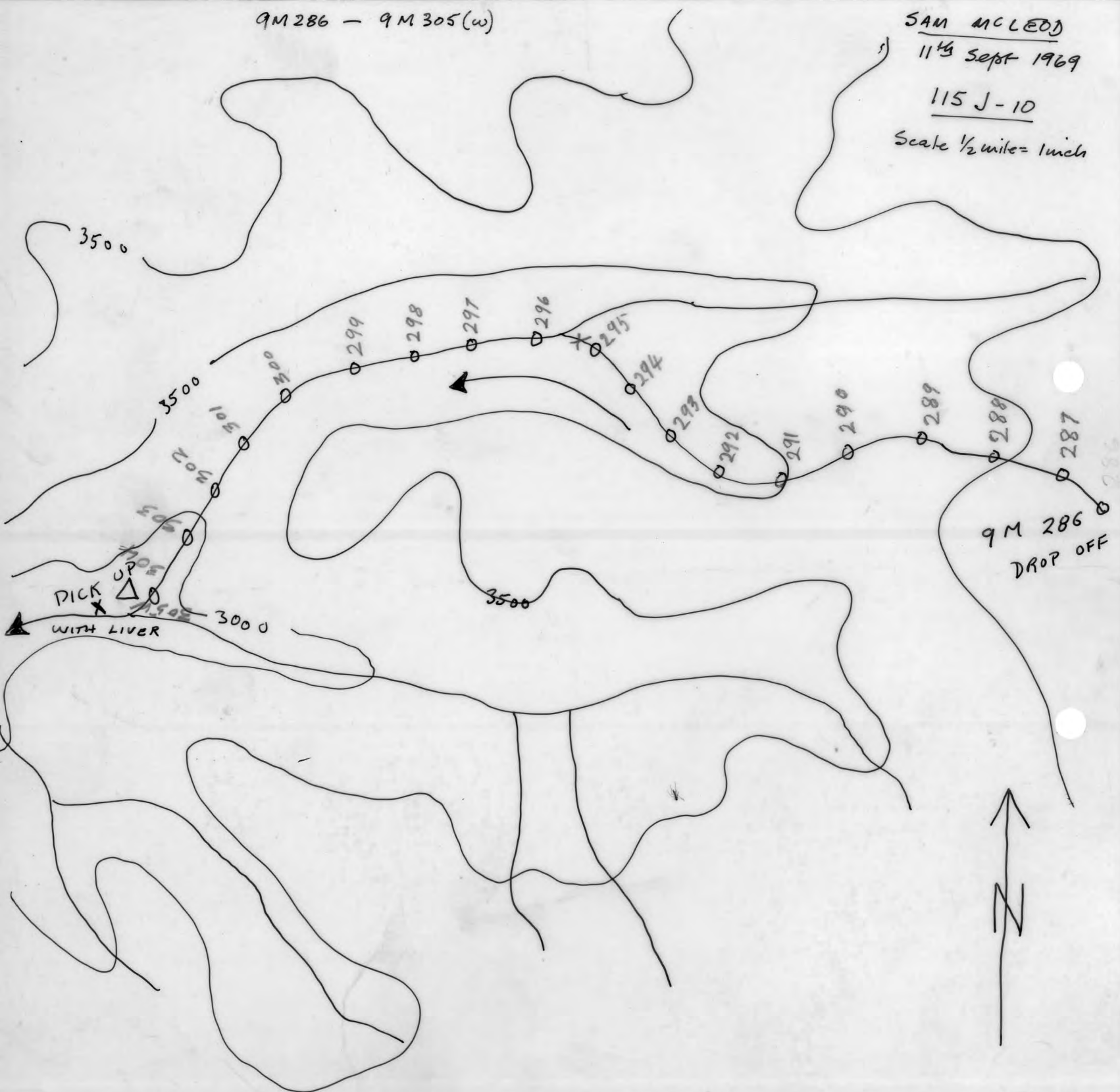
9M286 - 9M305(w)

SAM MCLEOD

11th Sept 1969

115 J-10

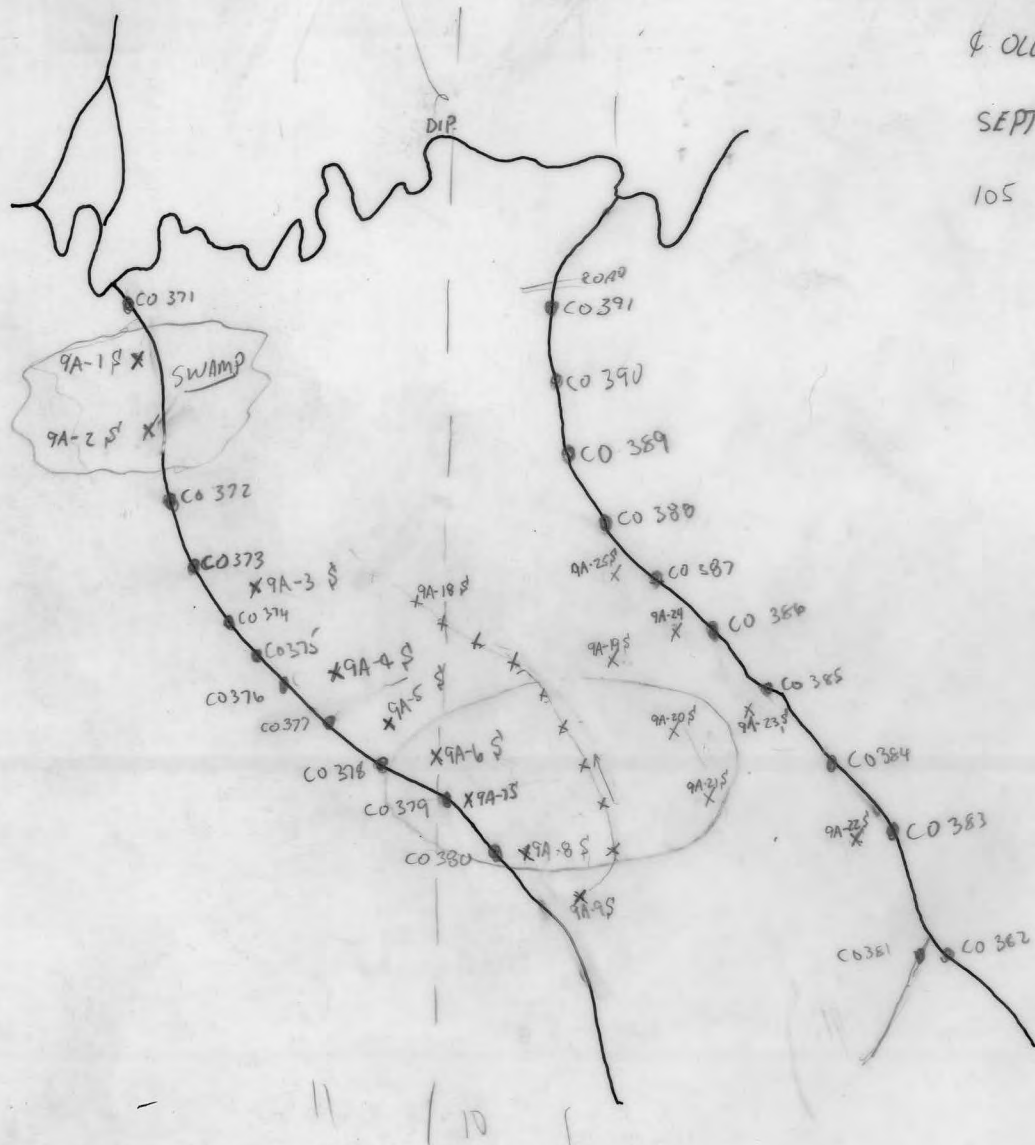
Scale 1/2 mile = 1 inch



T ADAMSON 9A-1-25 \$
♀ OLLIE CO 371 - CO 391

SEPT 16 / 69

105 510, 11



C0343 → 370

CHARLIE OLLIE

15th Sept. '69

115-J10.



Scale 1/2 mile = 1 inch

CO 331 → 342

CHARLIE OWEN

12th SEPT. 69

115-J-10



Scale 1/2 mile = 1 inch

CO 310 - CO 330 (W)

CHARLIE OLLIE
115 J 10

SEPT 11, 1969

SCALE 1" = 1/2 MILE



3500

4000

4500

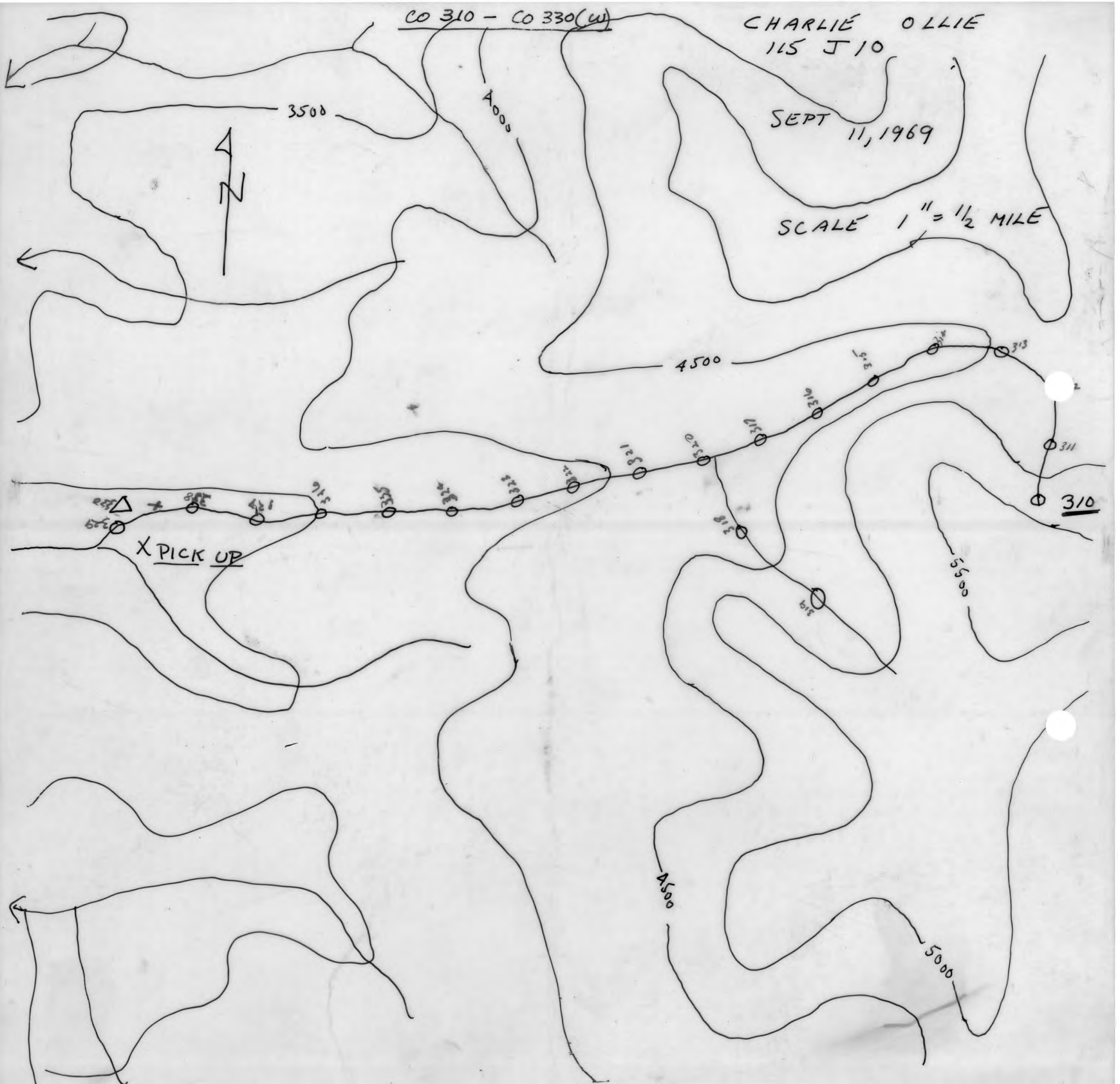
310

X PICK UP

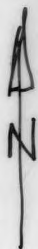
5500

4500

5000



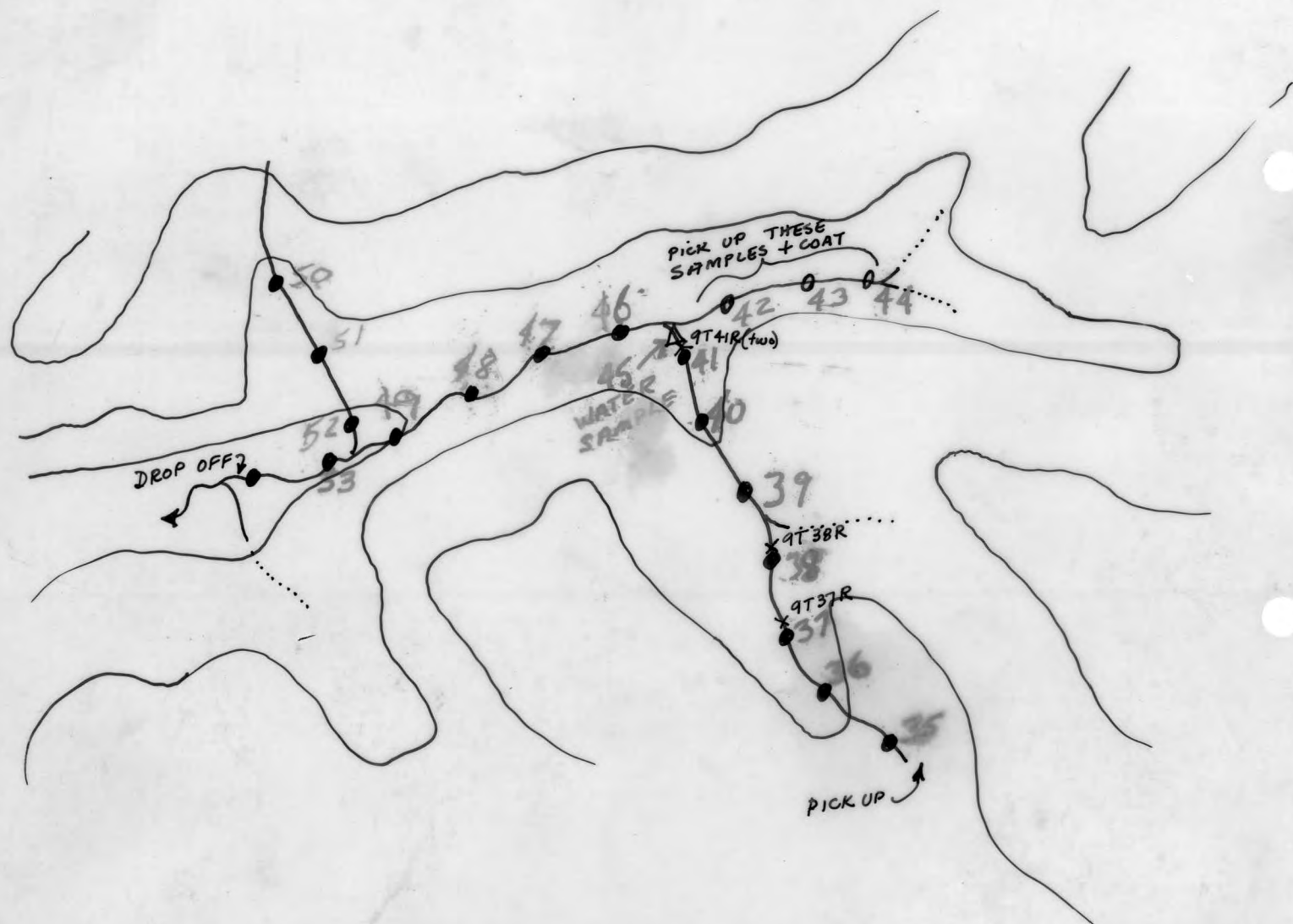
9T 35 → 9T 53



LEE TURNER

12th Sept. 69.

115-J-10.



Scale $\frac{1}{2}$ mile = 1 inch

SEPT 12/69

LEE TURNER

Rock Sample

No. 1 - FINE-MEDIUM
GRAIN - GRANITE

@ STAT. 9T-37

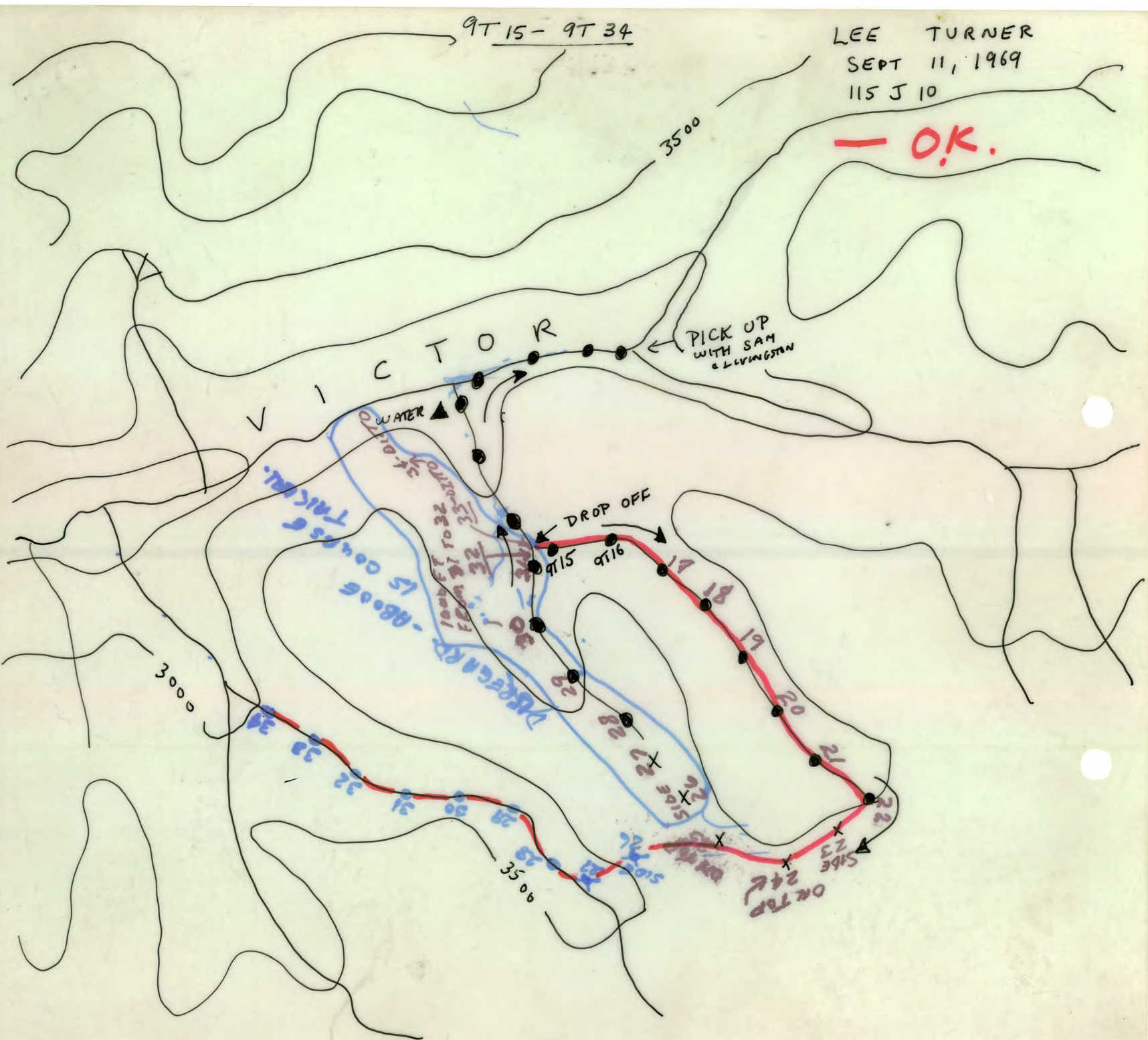
No 21. - DITTO -
@ STAT. 9T-38

No 111 - - DITTO
@ STAT 9T-41
from Outcrop
@ Stat 9T-41
Stream Sample
Pebbles ↗

9T15-9T34

LEE TURNER
SEPT 11, 1969
115 J 10

— O.K.



9/16/69

L.T.

9T56 - Soil -

This sample taken above stream. As stream is underground at this point.

9T-57 - Rock - Sample.

Fine grain granite with rust stain.

Possible Pyrites

Also Mica & Shist characteristics.

9T-63R - Rock Sample

Conglomerant Rock.

Definite Pyrites

Id. In Stream Bed.

- Blazed Trees for spotting from Helicopter.

Rock + Talus Slides on both sides of creek

Also Rock Face in area downstream.

SEPT 16/69

L. TURNER

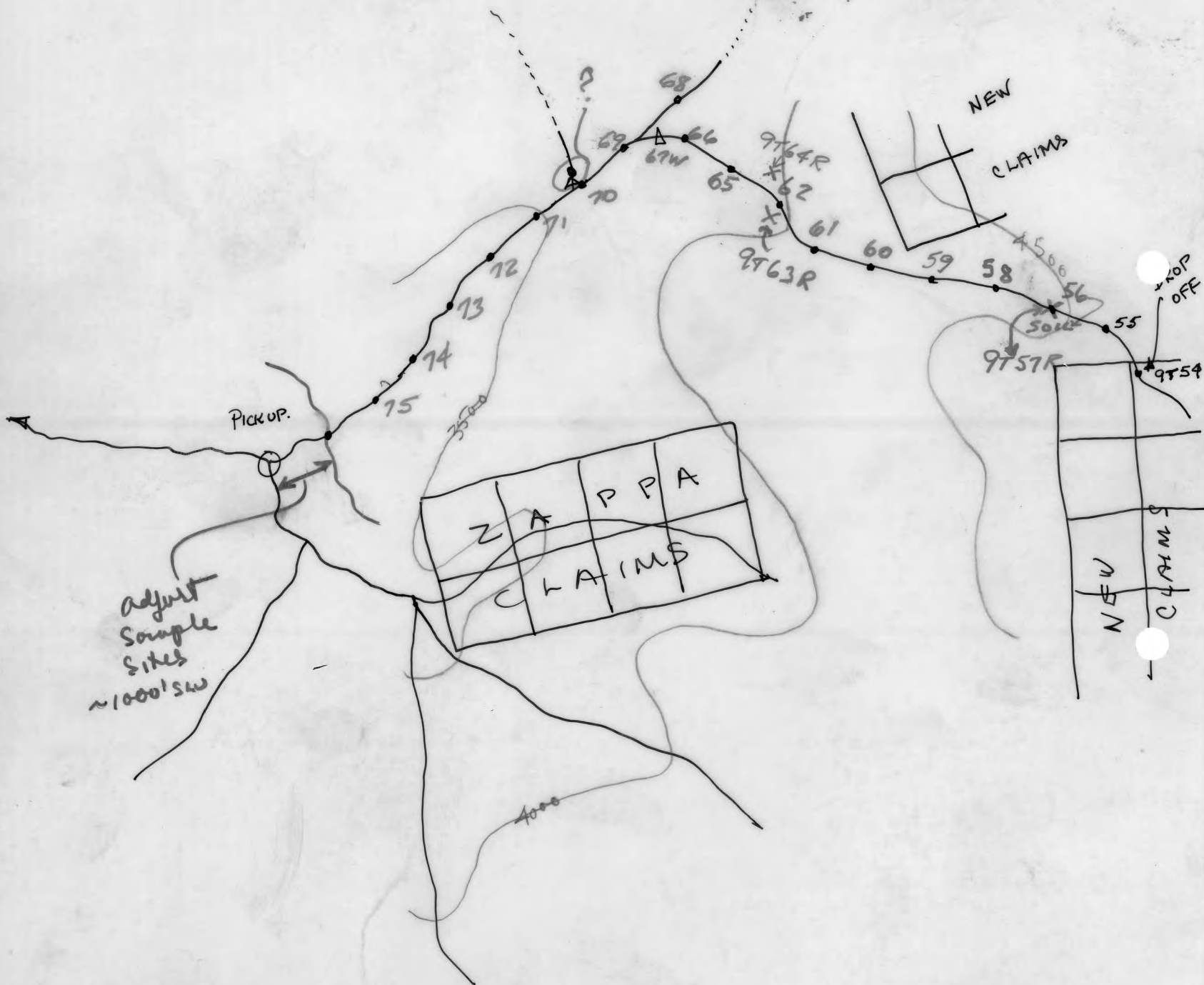
97-64R - PINK COLOR GRANITE.
SEEMS TO BE TYPICAL
COLORING WITH GREY
COARSE GRANITE IN
AREA.

9T54 → 9T75

LEE TURNER
SEPT 16/69

115 J10-11

Scale 1/2" = 1 mile



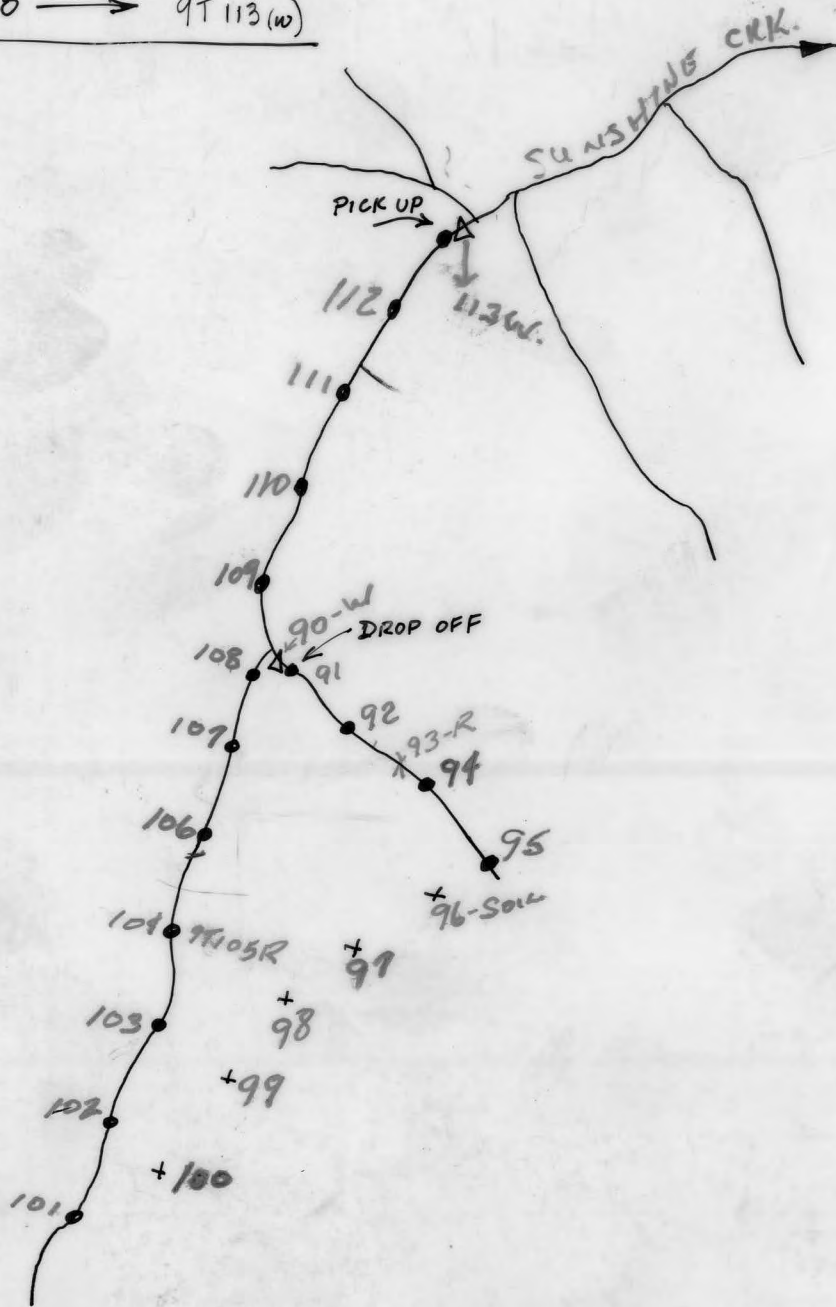
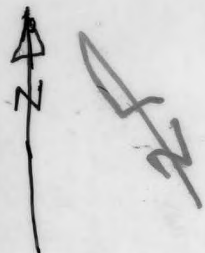
9T 90 → 9T 113(w)

LEE TURNER

105 5 10, 15

1" : 1/2 MILE

Sept. 18



SEPT. 18/69.

L. TURNER - SOIL SAMPLE

STAT.

COLOR

9T-96

-

GREY

9T-97

-

GREY-BROWN.

9T-98

-

GREY

9T-99

-

GREY

9T-100

-

BROWN

SUNSHINE CREEK.

9T-104 - Fd. OLD SQUARED OFF

STUMP. APPROX 4-5 FT.

HIGH. NO TAGS OR

WRITING THEREON.