

Field Sheet
115-5-10

SHEET 115-J-10

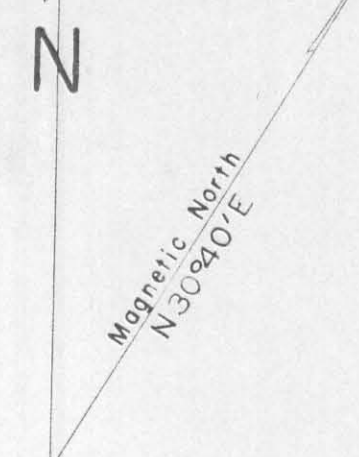
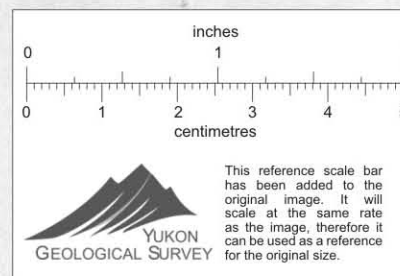
LATITUDE 62°30' To 62°45'
LONGITUDE 138°30' To 139°00'

NOTICE
THIS MAP IS ISSUED AS A PRELIMINARY GUIDE FOR WHICH THE DEPARTMENT OF NORTHERN AFFAIRS AND NATIONAL RESOURCES WILL ACCEPT NO RESPONSIBILITY FOR ANY ERRORS, INACCURACIES OR OMISSIONS WHATSOEVER ON THE SHEET BEFORE ADEQUATE SURVEYS HAVE BEEN MADE.

CANADA
DEPARTMENT OF NORTHERN AFFAIRS AND NATIONAL RESOURCES
NORTHERN ADMINISTRATION AND LANDS BRANCH
MINING AND LANDS DIVISION

SCALE: 1/2 MILE TO 1 INCH
FT. _____ FT.

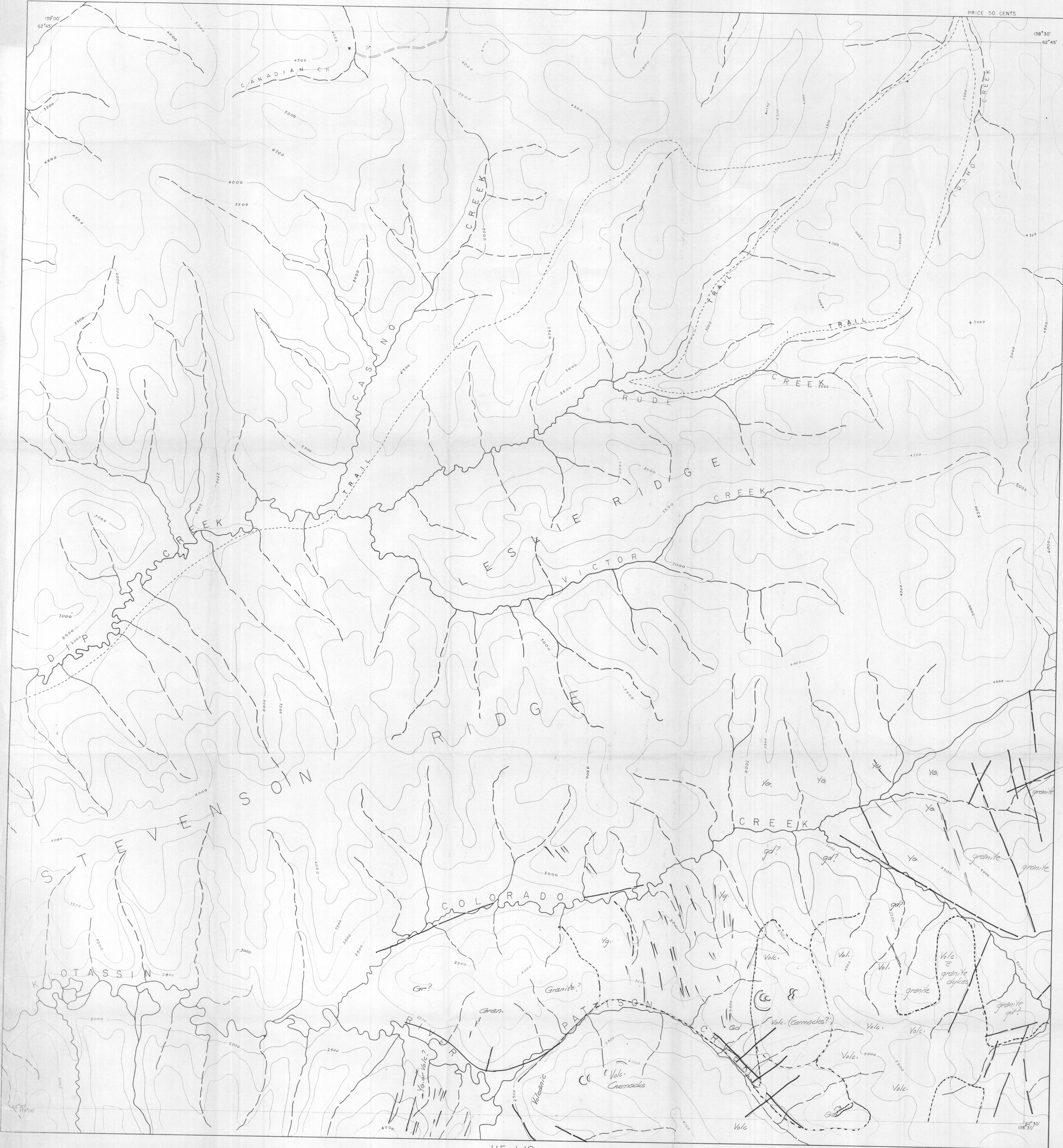
ISSUED UNDER THE AUTHORITY OF THE MINISTER
NORTHERN AFFAIRS AND NATIONAL RESOURCES



115-J-14	115-J-15	115-J-16
115-J-11	115-J-10	115-J-9
115-J-6	115-J-7	115-J-8

30 JUN 69
WHITEHORSE 16 Sept 58

PRICE 50 CENTS



115-J-10

012476