



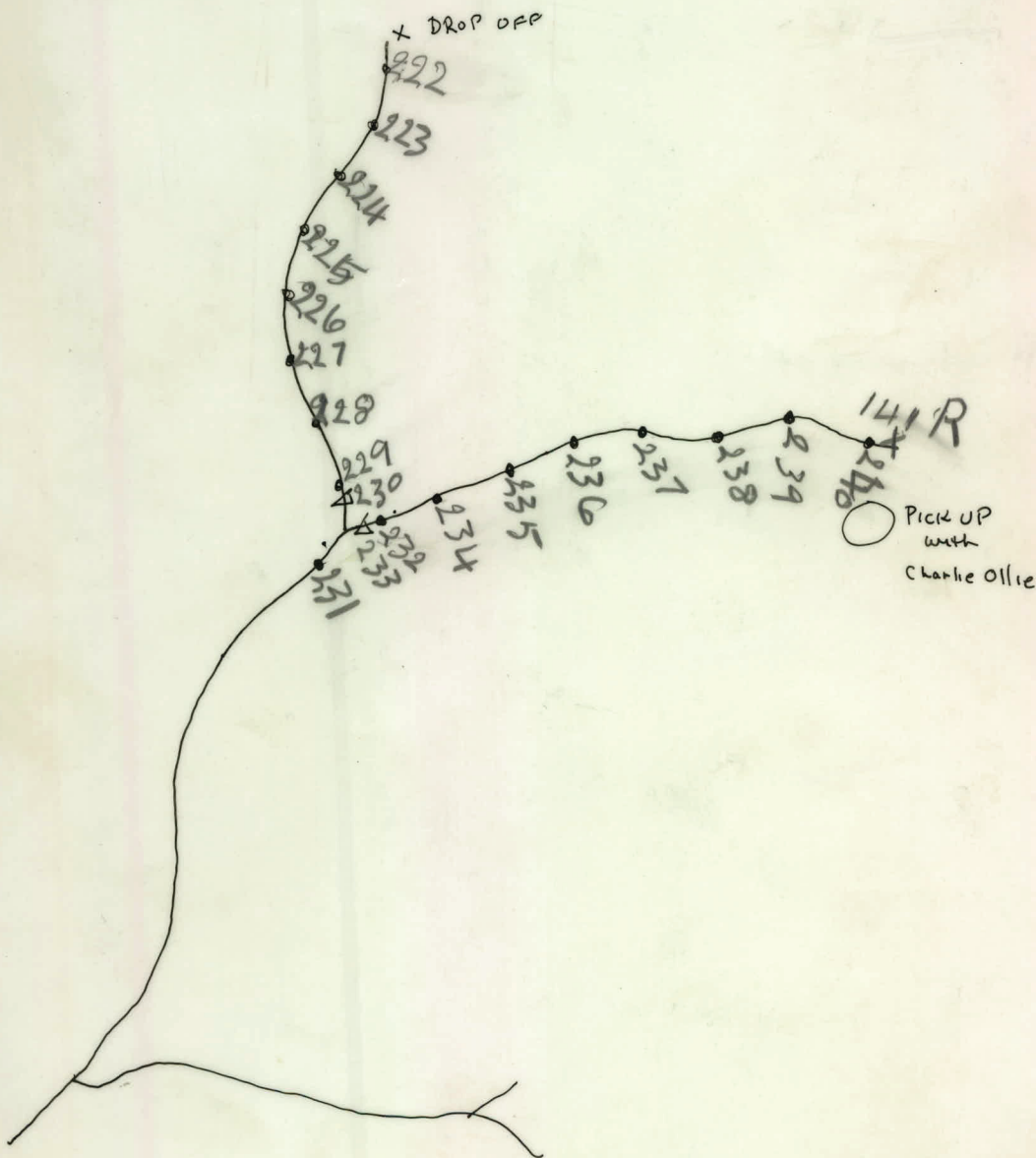
9x 222 → 9x 240

Peter Fox

Sept 17/69

115211

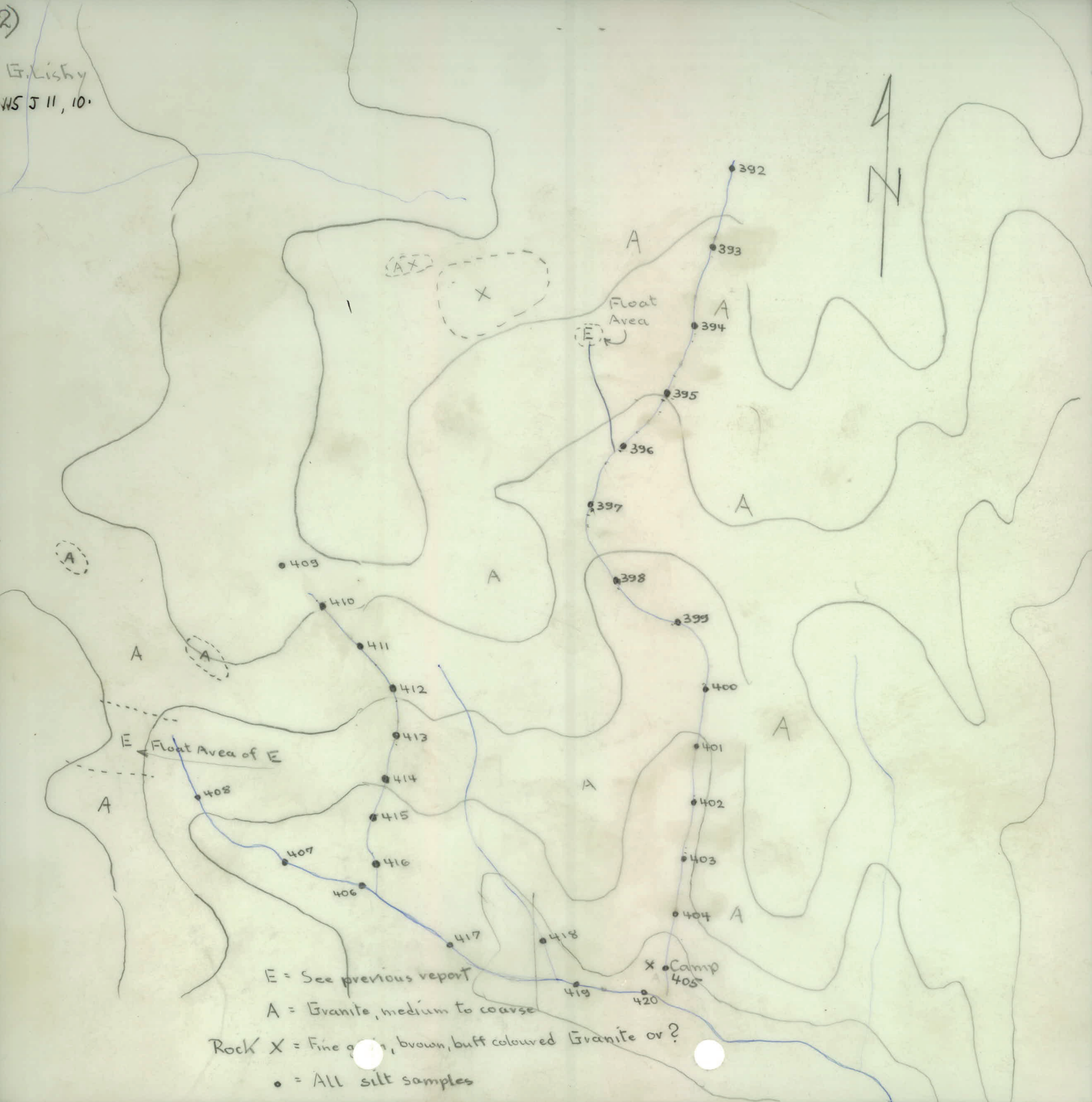
1" = 1/2 mile



SEP 17/69

9X222	SILT	SAMP	GRAY
9X223	SILT	SAMP	GRAY
9X224	SILT	SAMP	GRAY
9X225	SILT	SAMP	GRAY
9X226	SILT	SAMP	GRAY
9X227	SILT	SAMP	GRAY
9X228	SILT	SAMP	GRAY
9X229	SILT	SAMP	GRAY
9X230	WATER		
9X231	SILT	SAMP	GRAY
9X232	SILT	SAMP	BLACK
9X233	WATER		
9X234	SILT	SAMP	BLACK
9X235	SILT	SAMP	BLACK
9X236	SILT	SAMP	BLACK
9X237	SILT	SAMP	BLACK
9X238	SILT	SAMP	BLACK
9X239	SILT	SAMP	BLACK
9X240	SILT	SAMP	BROWN

G. Lishy  
NS J 11, 10.



E = See previous report

A = Granite, medium to coarse

Rock X = Fine grained, brown, buff coloured Granite or?

• = All silt samples

3)

G. Lishy

x Camp

A

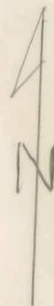
A

Mag 8

A

A

Dip Creek



Rock Samples have been taken at random around Mag. An.  
A 1-2-3-4-5

Sufficient rock exposures, no soil samples taken

9K228	wide	3	17
	Depth	1 1/2	FT
	Sed Color		Brown
	Slow Current		
9K229	wide	3	FT
	Depth	1 1/2	FT
	Sed Color		Brown
	Med. Current		
9K230	wide	4	FT
	Depth	2	FT
	Sed Color		Brown
	Med. Current		
9K231	wide	4	FT
	Depth	2	FT
	Sed Color		Brown
	Med. Current		
9K232	wide	1	FT
	Depth	2	FT
	Sed Color		Brown
	Med. Current		

9h233	Wide		3	FT
	Depth		1	FT
	Sed	Color		Brown
	Med	Current		<del>FT</del>
9h234	wide		3	FT
	Depth		1	FT
	Sed.	Color		Brown
	Med	Current		
9h235	Wide		3	FT
	Depth		2	FT
	Sed	Color		Brown
	Med	Current		
9h236	Water	Sample		
	wide		3	FT
	Depth		2	FT
	med	Current		
9h237	Water	Sample		
	wide		2½	FT
	Depth		2	FT
	Med	Current		

91238	Wide		Sept 17	2 1/2	FT
	Depth			2	FT
	Sed	Color			Black
	Med	Current			
91239	Wide			2	FT
	Depth			1	FT
	Sed	Color			Brown
	Med	Current			
91240	Wide			2	FT
	Depth			1 1/2	FT
	Sed.	Color			Brown
	Med	Current			
91241	Wide			2	FT
	Depth			1 1/2	FT
	Sed	Color			Brown
	Med	Color Current			
91242	Wide			2	FT
	Depth			1	FT
	Sed	Color			Brown
	Med	Current			

9L243	wide		Sept 17	2	FT
	Depth			1	FT
	Sed	Color			Brown
	Med	Current			
9L244	wide	1		2	FT
	Depth			1	FT
	Sed	Color			Brown
	Med	Current			
9L245	Wide			2	FT
	Depth			2	FT
	Sed	color			Brown
	Med	Current			
9L246	wide			2	FT
	Depth			1	FT
	Sed	Color			Brown
	Med	Current			
9L247	Wide			2	FT
	Depth			1	FT
	Sed	Color			Brown
	Med	Current			

Sept 17

9h 248

wide

2

FF

Depth

1

FF

Sed

Color

Brown

Med.

Current



9h285      Wide      2      19 FT  
              Depth      1      1 FT  
              Sed Color      Brown  
              Slow Current

9h286      Wide      2      1 FT  
              Depth      1      1 FT  
              Sed Color      Brown  
              Slow Current

9h287      wide      2      1 FT  
              Depth      1      1 FT  
              sed Color      Brown  
              Slow Current

9h288      wide      2 FT  
              Depth      1      1 FT  
              Sed Color      Brown  
              Slow Current

9h289      wide      2      1 FT  
              Depth      1      1 FT  
              sed Color      Brown  
              Slow Current

		Sept 19	
92290	Water Sample		
	wide	2	F-T
	Depth	1	F-T
	slow Current		
92291	Water Sample		
	wide	2	F-T
	Depth	1	F-T
	slow Current		
92292	wide	2	F-T
	Depth	1	F-T
	Sed Color		Brown
	slow Current		
92293	wide	2	F-T
	Depth	1	F-T
	Sed Color		Brown
	slow Current		
92294	wide	2	F-T
	Depth	1	F-T
	Sed Color		Brown
	slow Current		

9h295	width	2	19
	Depth	1	F-8
	Sed Color		Brown
	Slow Current		
9h296	Soil Sample		
	Sed Color		Black
9h297	Soil Sample		
	Sed Color		Black
9h298	Soil Sample		
	Sed Color		Black
9h299	Soil Sample		
	Sed Color		Black
9h2300	width	2	F-0
	Depth	1	1-8
	Sed Color		Brown
	Slow Current		

Sept 19  
9L301 wide 2 FT  
Depth 1 FT  
Sed Color Brown  
Slow Current

9L302 wide 2 FT  
Depth 1 FT  
Sed Color Brown  
Slow Current

9L303 wide 2 FT  
Depth 1 FT  
Sed Color Brown  
Slow Current

9L304 Rock Sample

9L305 wide 2 FT  
Depth 1 FT  
Sed Color Brown  
Slow Current

9L306	Rock Sample			
9L307	Wide	2	FT	
	Depth	1	FT	
	Sed Color			Brown
	Slow Current			
9L308	Wide	2	FT	
	Depth	1	FT	
	Sed Color			Brown
	Slow Current			
9L308	Wide	2	FT	
	Depth	1	FT	
	Sed color			Brown
	Slow Current			
9L309	Wide	2	FT	
	Depth	1	FT	
	Sed Color			Brown
	Slow Current			
9L310	Water Sample			
	Slow Current			

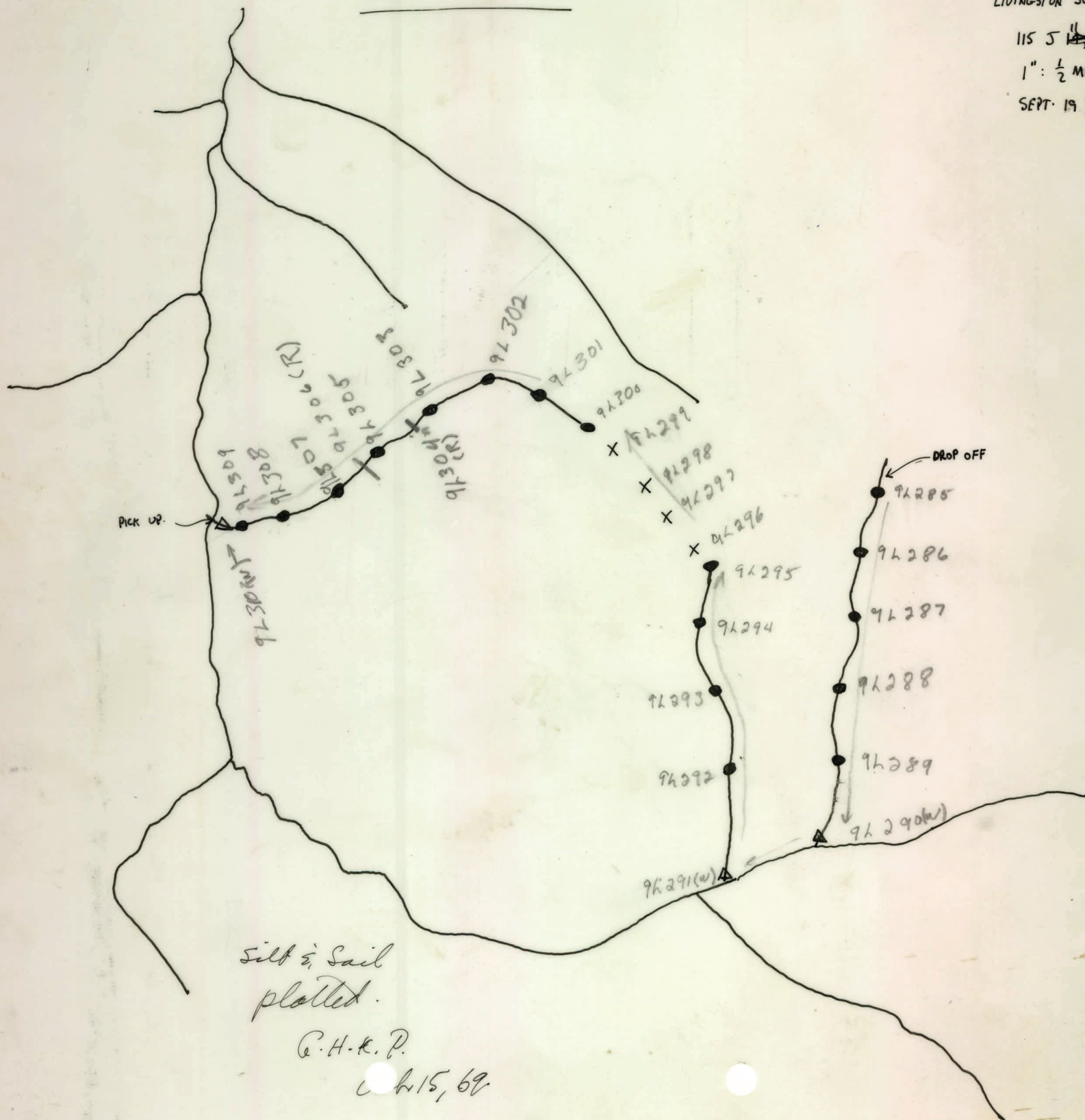
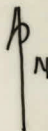
9L285 → 310(w)

LIVINGSTON JOHNSON

115 5 ~~14~~ 15

1" : 1/2 MILE

SEPT. 19 / 69



Silt & Sail  
plotted.

G.H.K.P.

6/15, 69

			Sept	22
91337	Wide		2	FT
	Depth		1	FT
	Sed	Color		Brown
	Slow	Current		
91338	Wide		2	FT
	Depth		1	FT
	Sed	Color		Brown
	Slow	Current		
91339	wide		2	FT
	Depth		1	FT
	Sed	Color		Brown
	slow	Current		
91340	Dried out			
	Sed	Color		Brown
91341	wide		7	FT
	Depth		6	in
	Sed	Color		Brown
	slow	Current		

			Sept 22
91342	wide		2 FT
	Depth		1 FT
	Sed Color		Brown
	Slow Current		
91343	wide		2 FT
	Depth		1 FT
	Sed Color		Brown
	slow Current		
91344	wide		1 FT
	Depth		6 in
	Sed Color		Brown
	slow Current		
91345	Dryed out		
	Sed Color		Brown
91346	wide		2 FT
	Depth		1 FT
	Sed Color		Brown
	Slow Current		

		Sept 22	
9L347	Wide	2	FT
	Depth	1	FT
	Sed Color	Brown	
	Flow	Current	
9L348	Wide	2	FT
	Depth	1	FT
	Sed Color	Brown	
	Flow	Current	
9L349	Wide	2	FT
	Depth	1	FT
	Sed Color	Brown	
	Flow	Med Current	
9L350	Wide	2	FT
	Depth	1	FT
	Sed Color	Brown	
	Flow	Med Current	
9L351	Wide	2	FT
	Depth	1.8	FT
	Sed Color	Brown	
	Flow	Slow Current	



9/357	Wide		10 FT
	Depth		2 FT
	Sed Color		Brown
	Med		Current
9/358	Wide		10 FT
	Depth		2 FT
	Sed Color		Brown
	Med		Current
9/359	Wide		10 FT
	Depth		2 FT
	Sed Color		Brown
	Med		Current
9/360	Water Sample		
	Wide		10 FT
	Depth		2 FT
	Med		Current
9/361	Wide		10 FT
	Depth		2 FT
	Sed Color		Brown
	Med		Current

9L337 →

9L337-354

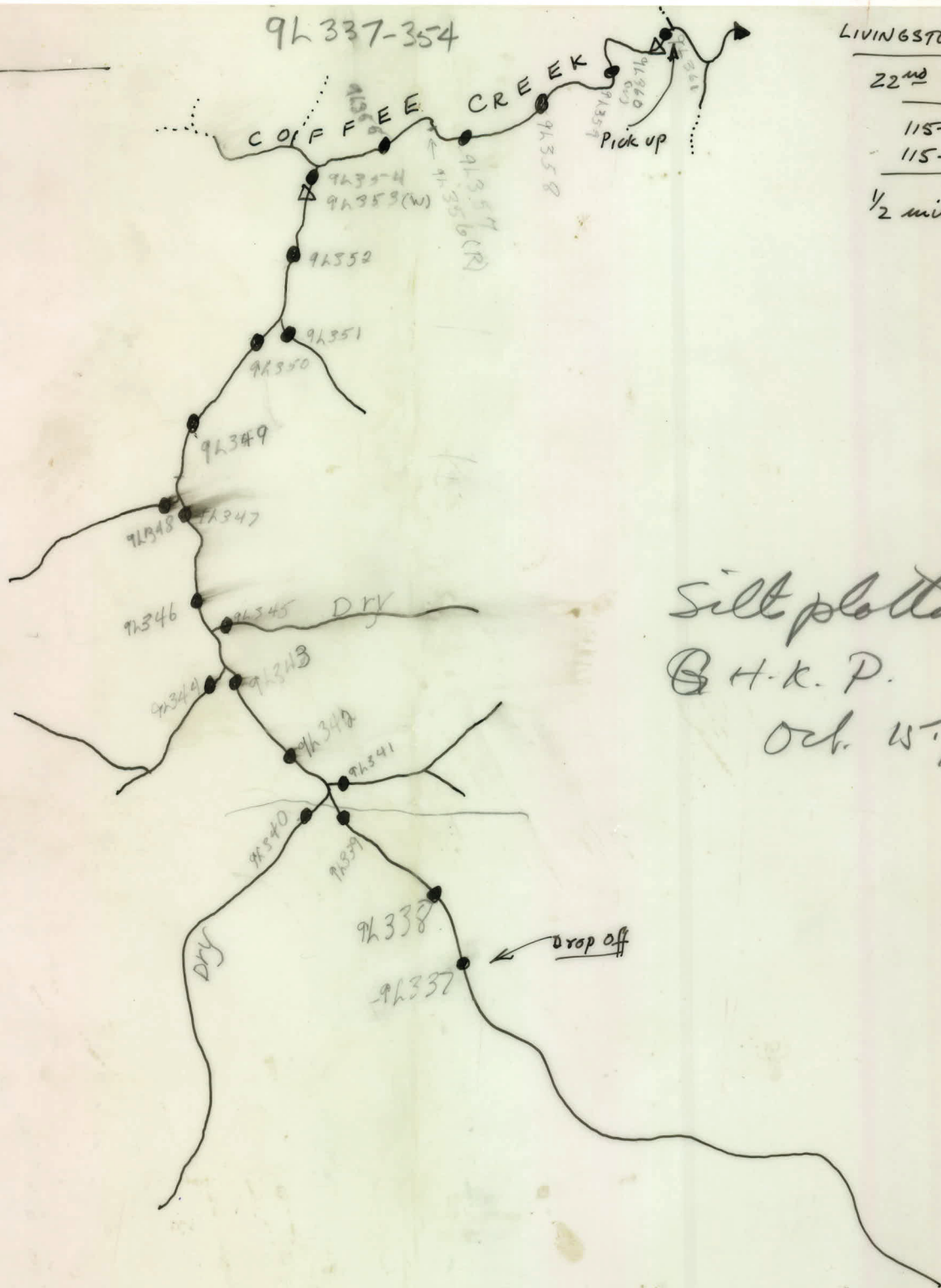
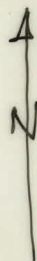
LIVINGSTON JOHANSON

22<sup>nd</sup> Sept. 1969

115-J14

115-J11

1/2 mile = 1 inch.



Doyle Creek 115 J-11

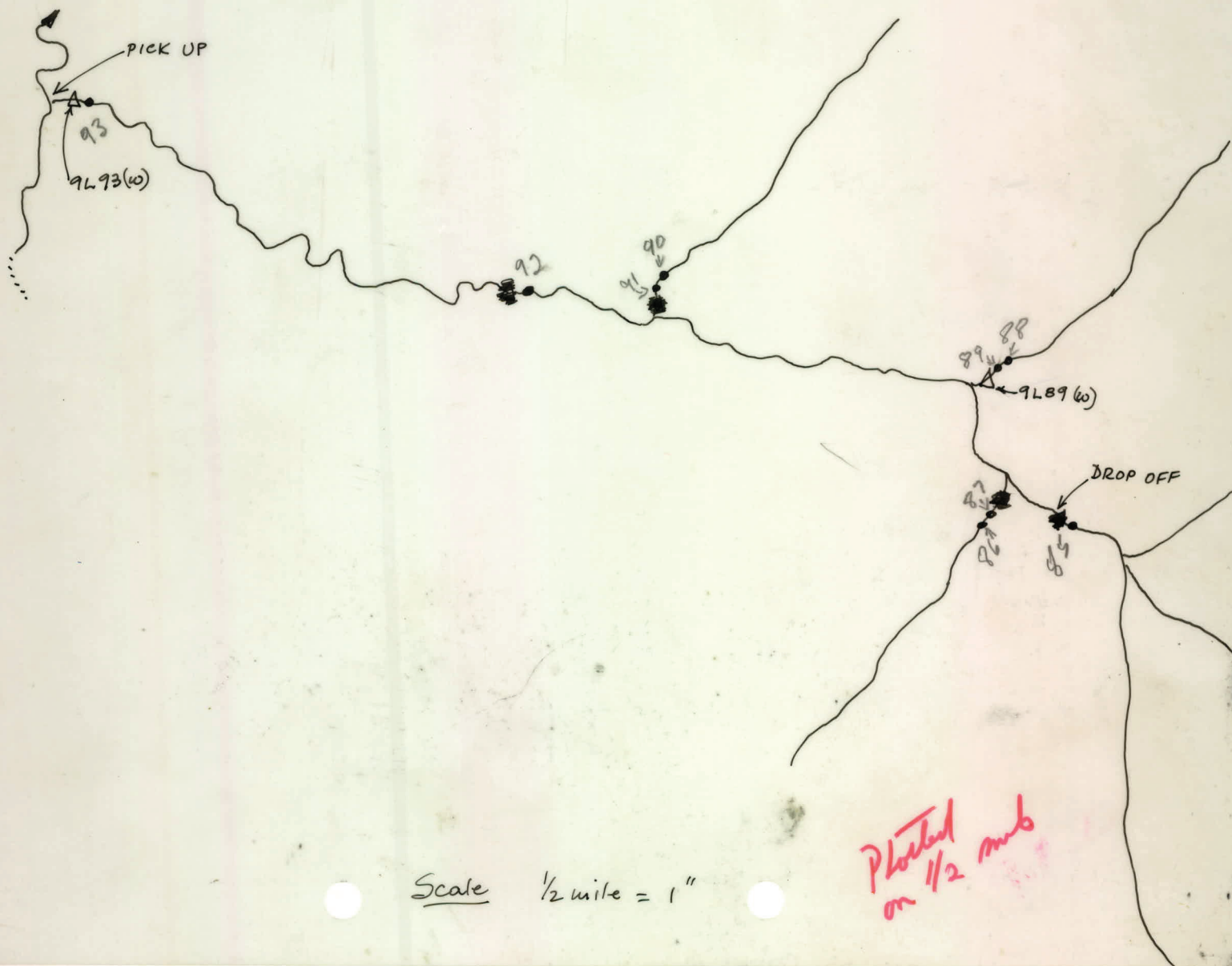
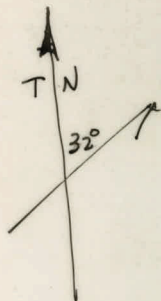
LIVINGSTON JOHNSON

9<sup>th</sup> Sept. 1969

Δ water sample

• silt sample

x rock sample.



Sept 9  
9285 Wide 5 FT  
Depth 1 FT  
Seed color Red  
Med. Current

9286 wide 3 FT  
Depth 6 1/2  
Seed Color Red  
Med. Current.

9287 wide 3 FT  
Depth 6 1/2  
Seed Color Red  
Med Current

9288 Wide 5 FT  
Depth 1 FT  
Seed Color Red  
Med Current

9289 wide 7 FT  
Depth 1 FT  
Seed Color Red  
Med. Current

9L90 wide 1 FT  
Depth 4 in  
Sed. Color gray  
Slow current

9L91 wide 1 FT  
Depth 6 in  
Sed. Color Black  
Slow current

9L92 wide 4 FT  
Depth 6 in  
Sed. Color Red  
Slow current

9L93 wide 4 FT  
Depth 2 FT  
Sed. Color Red  
Med. current

9/29/90.

Posts 1 + 2

Thinghits

Aug. 31/69

S. Kuevers

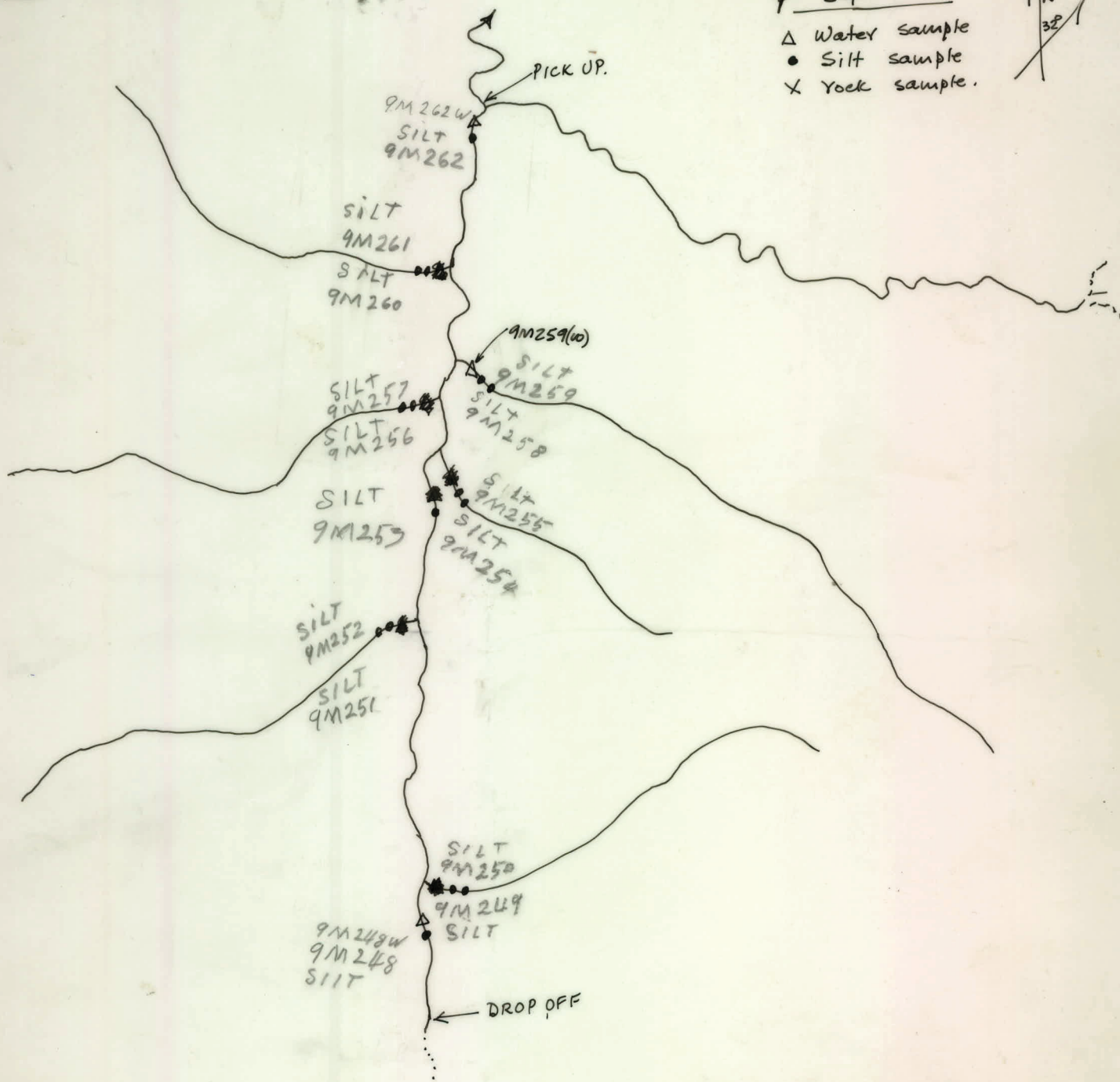
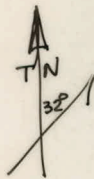
Claim Postion

Doyle Creek 115-J-11

SAM MCLEOD

9<sup>th</sup> Sept. 1969

- △ Water sample
- Silt sample
- X Rock sample.



SCALE  $\frac{1}{2}$  mile = 1"

*Plotter*

Doyle Creek 115-J11

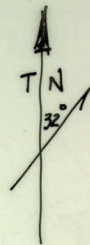
CHARLIE OLIE.

9<sup>th</sup> Sept. 1969.

△ Water sample

● Silt sample.

X Rock sample.



SCALE 1/2 mile = 1 inch

Plotted

Oct 4/69  
115 J 11-14  
1" = 1/2 mi



Lotted  
1/2 mile even  
RBS

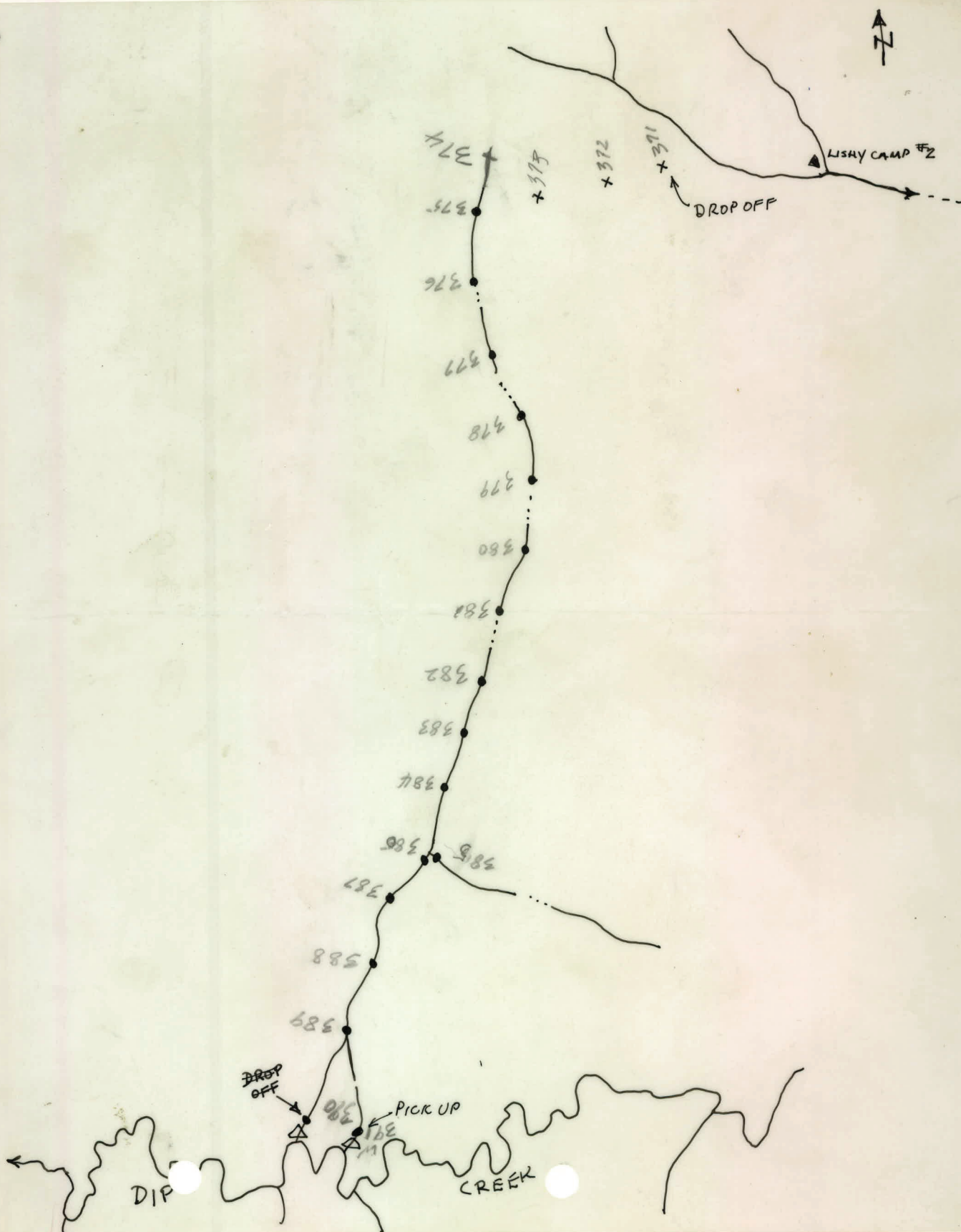
Klinglet's  
8  
15N  
15R  
Aug 31/69  
J. Kuevers

Squaw Aug 31/69  
15L  
15N H 10  
B. Hodstth

SAM McLEOD

SEPT 16/69

115J11



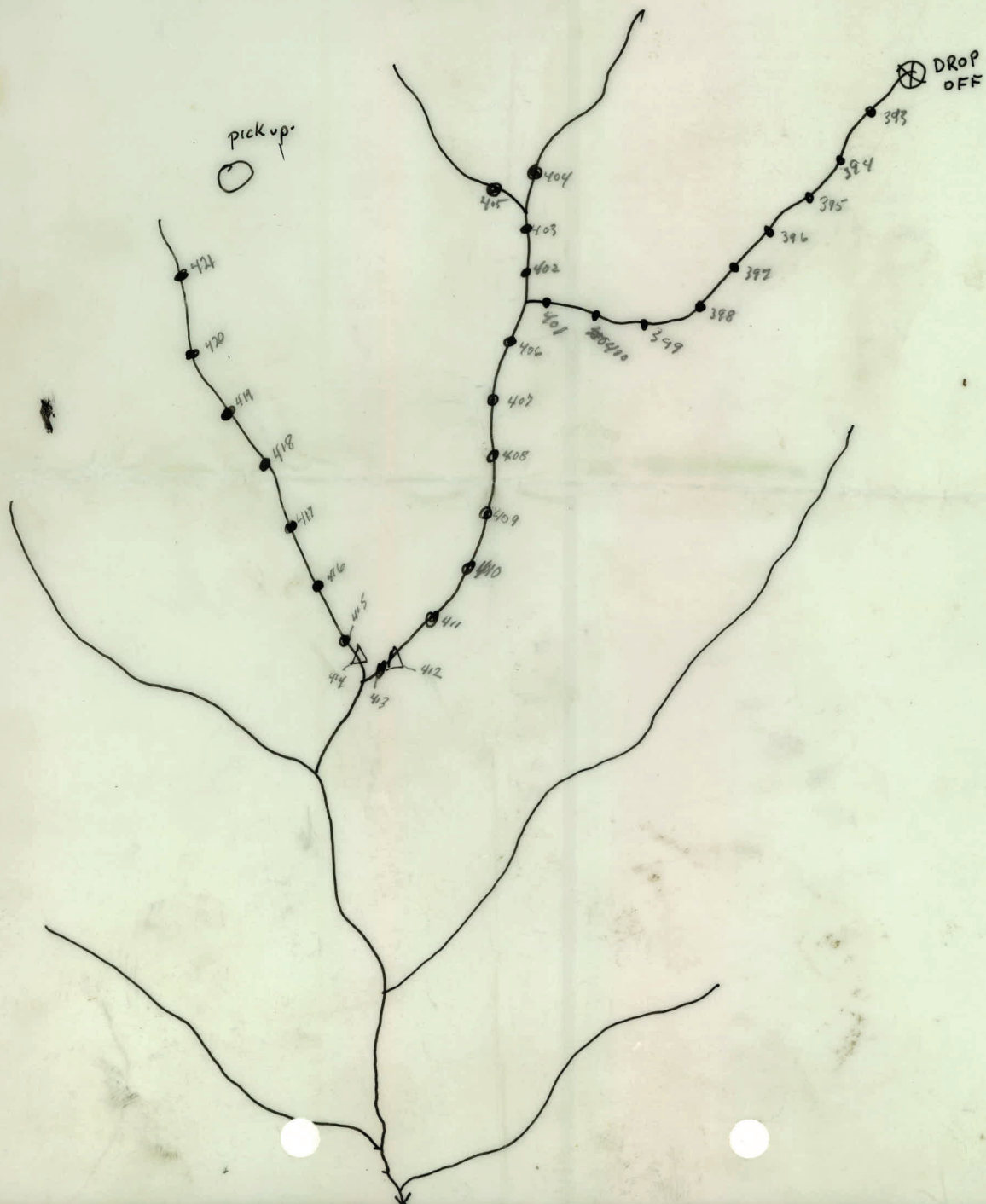
40393 → CO 405

Charles Ollie

115211

Sept 17/69

1" = 1/2 mile

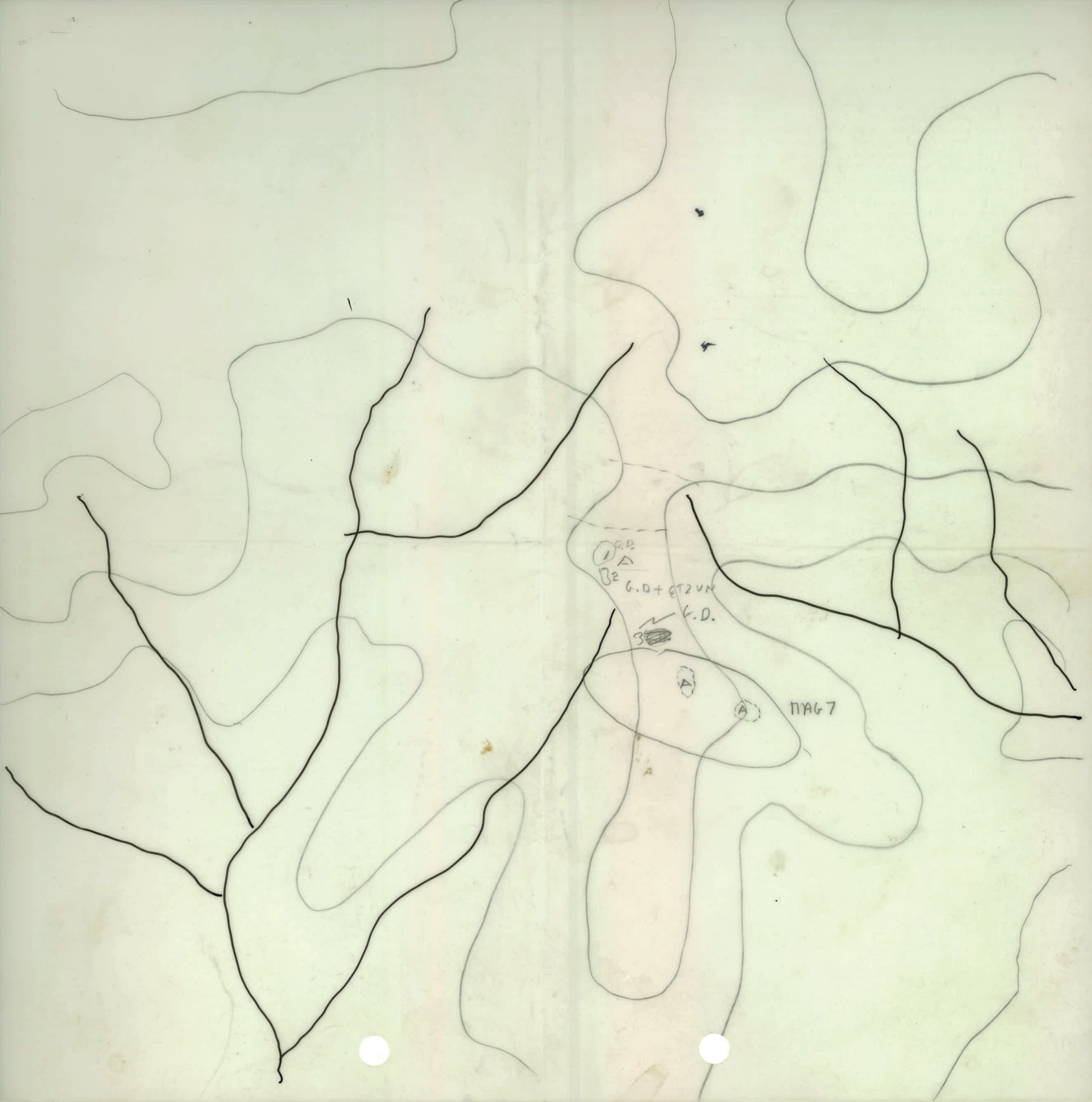


Pease - T. Braek

Geol trav. over MA 7

mag suscept. by diameter:

- P-1 diorite (f.g) wk. mag
- P2 m.g. equig. b. hb qtz more - wk. mag.
- P3 m-c g lg. hb GD - wk. mag.
- P4 mg equig. hb-bi GD - wk-mod mag.
- P5 rusty m-f g granite? - wk. mag
- P6 f.g. joint wk-mod mag.
- P7 lg. hb. m.g. q.m. - wk. mag.
- P7 f-mg hb g.d. - wk. mag.
- P7 f.g. mafic - felsic dyke - wk-mod mag.
- P8 fol. m.g. g.d with mafic incl. wk-mod mag.
- P9 rusty f-mg granite? v. wk. mag.
- P10 lg hb-mg g.d + aor. incl. wk mag.
- P11 ap lite v. wk. mag.
- P12 a laskite or ap lite - v. wk. mag.
- P12 mg biot qm - wk mag



# Mag Anomaly #7

Oct 3rd. 1969  
G. Pearce.

P#1 - #2 post 29 & 30 GEP Grp.  
mottled dk. grey  
hb-biot gtr diorite

500' on Bry. 150° -

P#2 c-gr. hb-biot. granodiorite

~~0700~~ - t.p. Bry. 205

500' #3 c-gr biot-hb-gdiorite

#4 -  $\frac{1}{2}$  med gr. " " " "

0700 t.p. Bry. 210°

40' #5 - rusty altered c-gr. granodiorite  
chloritized matrix & biotite

300' @ 210° - f. grained to  
med gr. biot. granite blocks  
& c-gr. g diorite - perhaps  
dike of former. #6

450' ~~0700~~ granite veinlet in highly altered

hb gdiante - chlorite epidote?  
 in field? alt. #7

500' f.g. granite cutting c.gr. gd  
 in large boulder.

600' - ditto. - c.gr. gd. cut by  
 f.g. granite

1200' - c.gr. gd with highly  
 mafic clots or bands?  
 last 400' - development  
 of moderate to intense  
 fr. #8 (large sample)

1275' - ditto.

1600' - rusty altered granite (Lishy's "E")  
 #9.

also. - graph. diorite v. f. gr.

2200' - c.gr. gd.

2500' - " " " with clots diorite

3100' - gd. - cut by f. gr. grab.

4100 - no otc. since last.

4200 - fol. hb-biot. gd.

4500 - f.g. pink alaskite  
with garnet & sl of  
feld. with graphic  
intergrowth of qtz - also  
showing myrmekitic texture  
# 11

5800 - c. gr hb-biot. gd. # 12

5300 - c. gr. qtz

D  
E. Lishy  
105 JH

G. Pearce  
geology

Gary, Tim Oct 3/69  
drop off  
x



hb-biotqtz diorite P1

P2 - c. gr. gd.

rusty alt. gd. (ch) - P5

P7

foliated - c. gr. gd. with mafic  
clots and bands - E - P8

P9

Float Area of E

rusty altered granite & porph. f. q. diorite

A - c. gr. gd.

A - c. gr. gd. with diorite clots

137 - gd. cut by f. q. granite

P11 - foliated hb-biot. gd.

138 - f. q. pink alkali (graphite field)

P12 - c. gr. hb-bio-gd.

Mag 7

139

Geol. plotted.

G. H. K. P.

Oct. 8/69

A = Granite medium to coarse

E = See previous report

• = All samples soil

Geological Plotting  
1 1/2 miles. QSD.

x  
pick up.

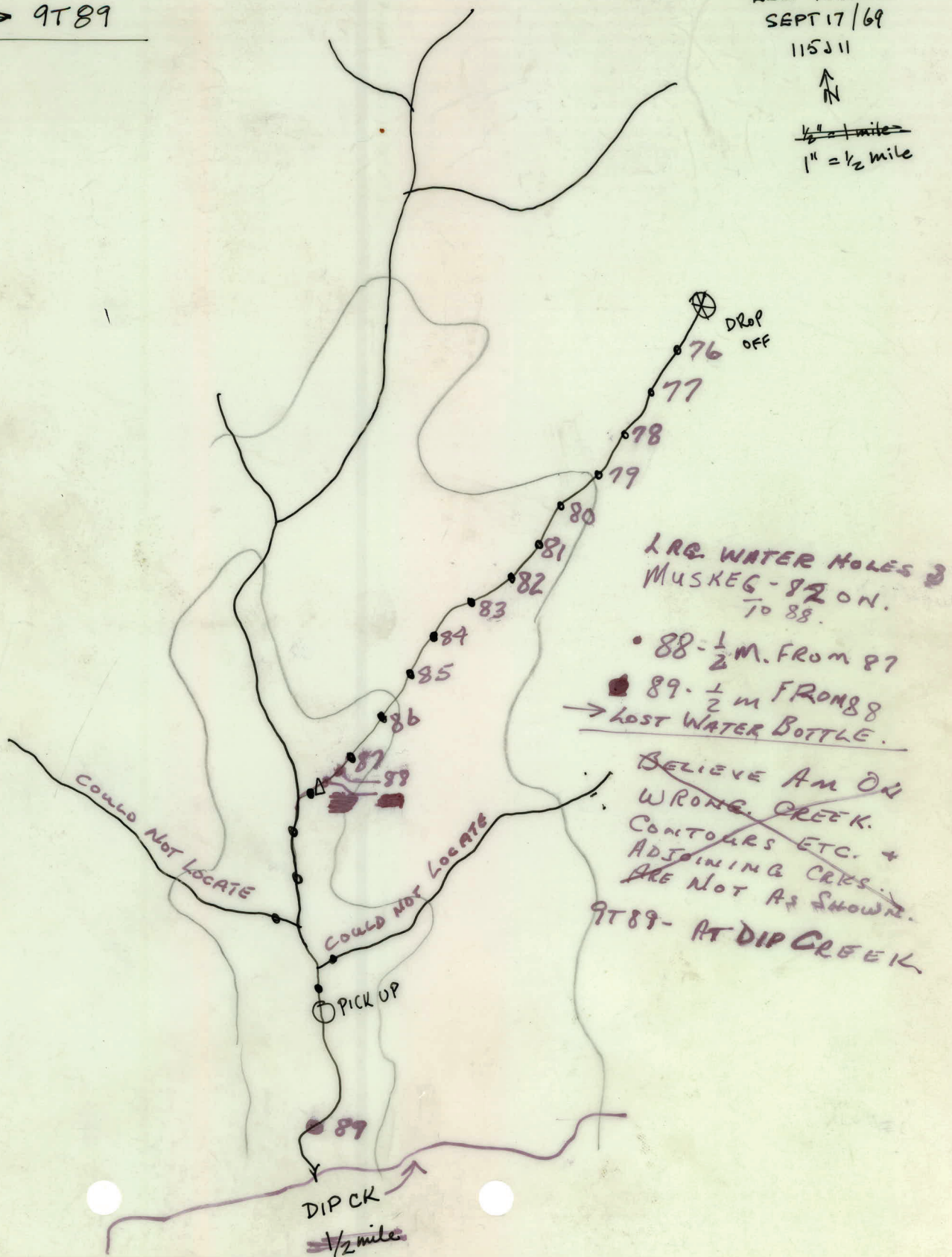
9T76 → 9T89

LEE TURNER  
SEPT 17/69

115311



$\frac{1}{2}'' = 1 \text{ mile}$   
 $1'' = \frac{1}{2} \text{ mile}$





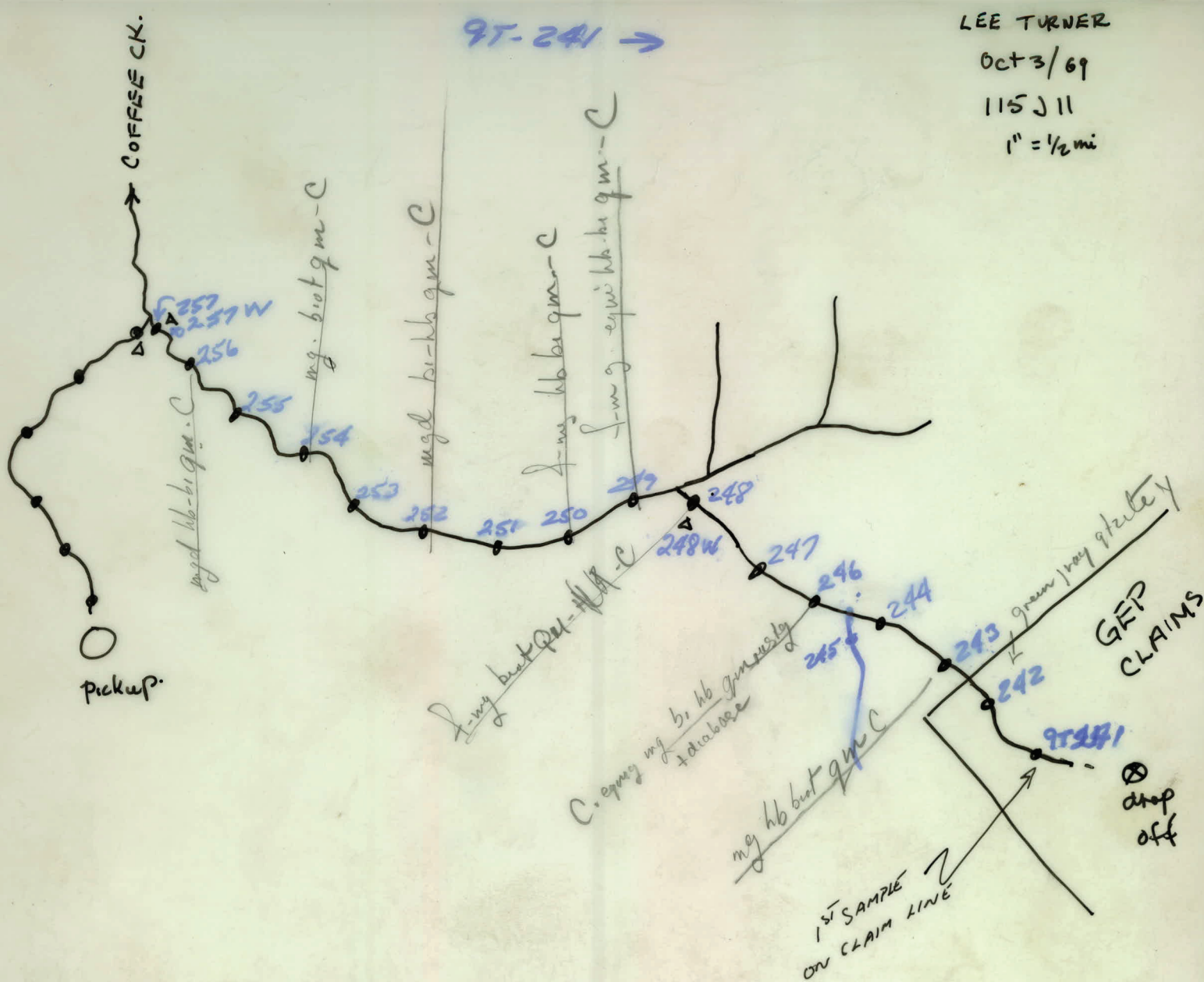
LEE TURNER

Oct 3/69

115 J 11

1" = 1/2 mi

9T-241 →



Geobem loc. plotted on 1/2 mile  
9TB.

Geology - all coal float - Qm. (Qd?).  
Plotted Oct. 8. G.H.K. Pea