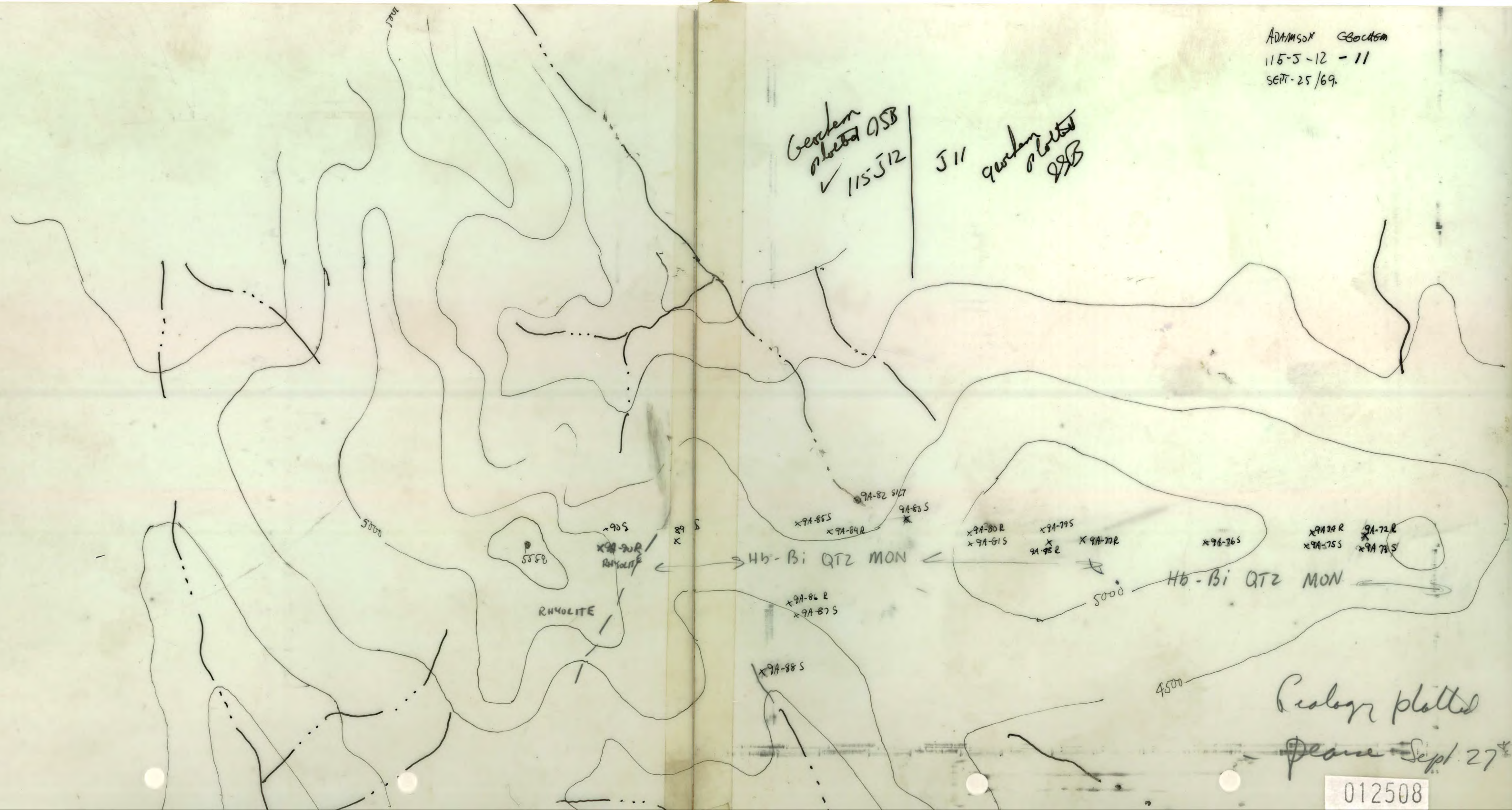


ADAMSON G. Beckson
115-5-12 - 11
SEPT. 25 / 69.

Geology plotted QSB
✓ 115512 | 511
geology plotted QSB

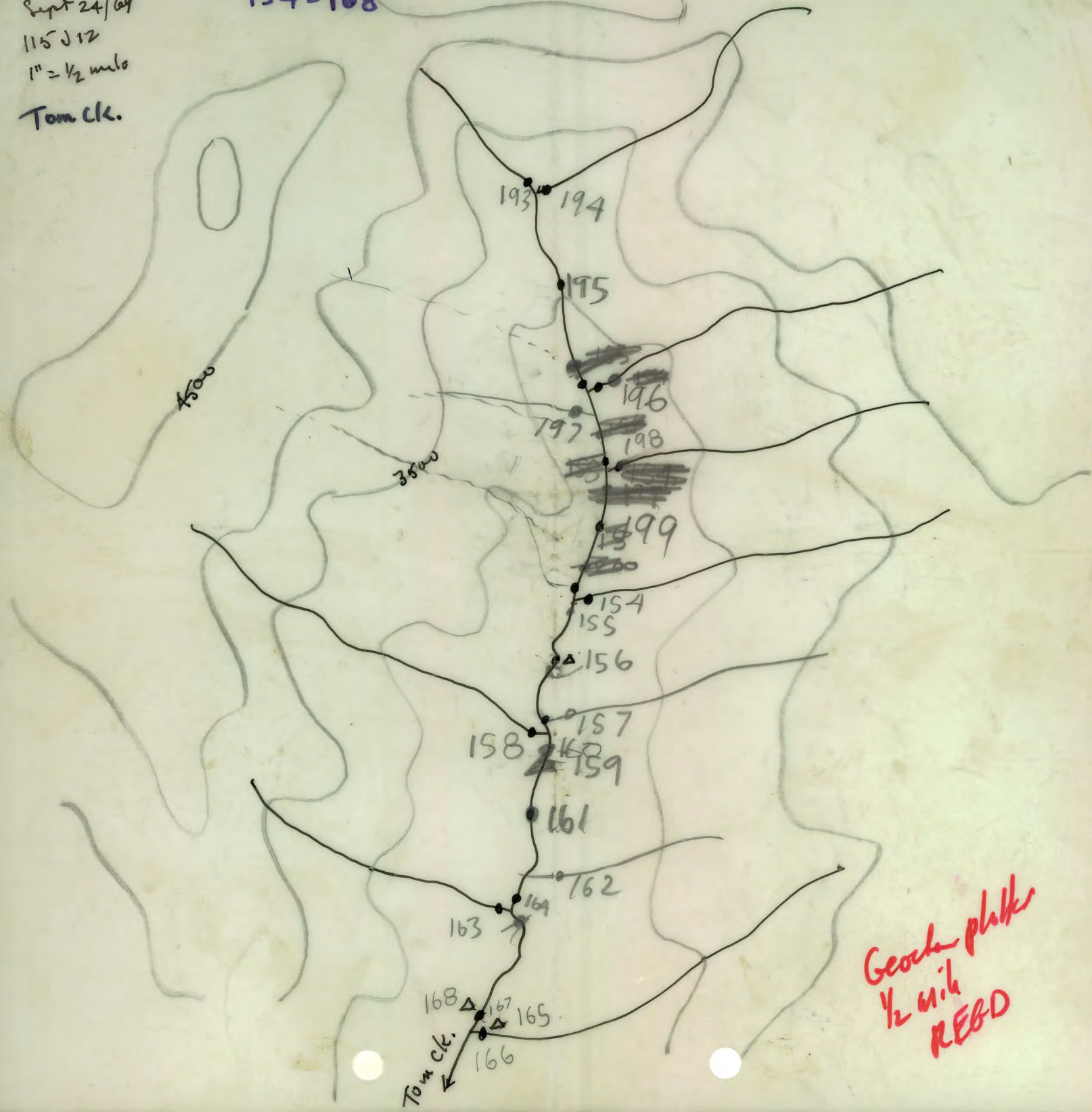


Geology plotted
Plane Sept 27

012508

Tim Brook
Sept 24/09
115 J 12
1" = 1/2 mile
Tom Ck.

97 193-199
154-168

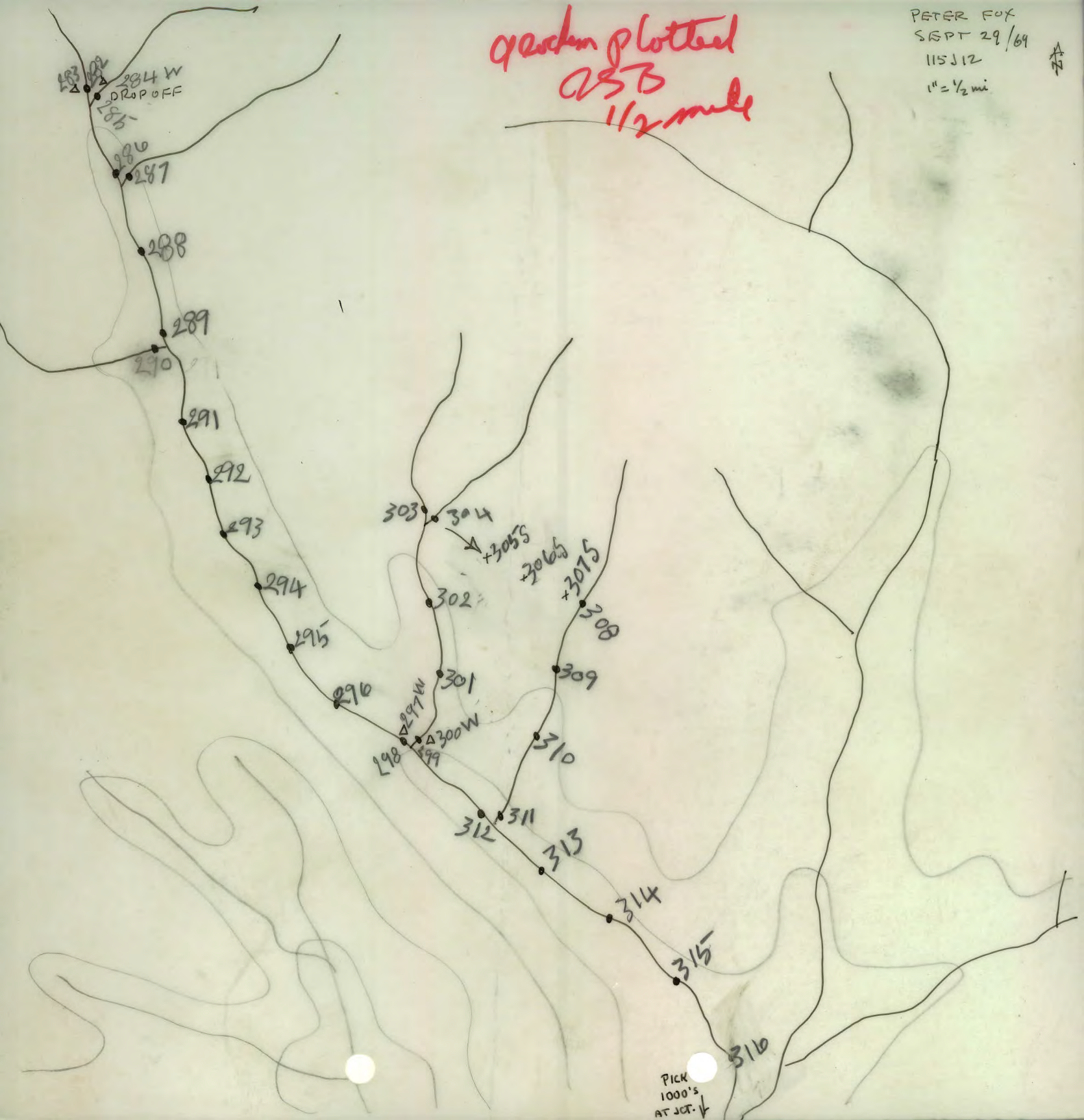


Geologic plates
1/2 mile
REED

quadrant plotted
ASB
1 1/2 miles

PETER FOX
SEPT 29/69
115J12
1" = 1/2 mi

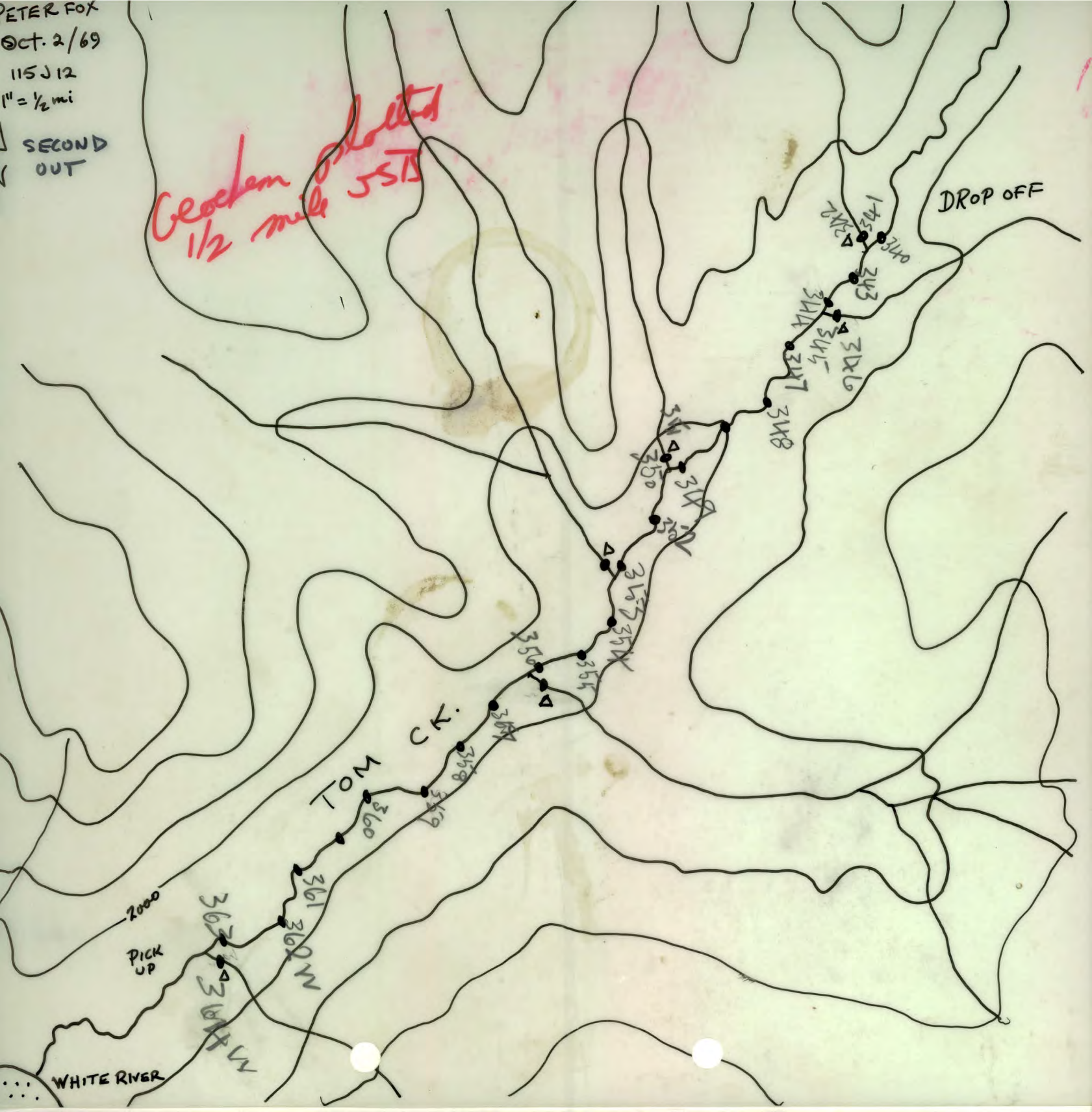
▲



PETER FOX
Oct. 2/69
115J12
1" = 1/2 mi
SECOND
OUT

Geochem collected
1/2 mile JSTIS

DROP OFF



WHITE RIVER

91420-442

LIVINGSTON JOHNSTON

SEPT 29 / 69

115 J 12

1" = 1/2 mi

2



Plotted
1 1/2 mile geochron
QSB

PICK UP

LIVINGSTON JOHNSON FIRST OUT

115 J 12

SEPT 30/69

1" = 1/2 mi

9L 443-9L 472

Geodesic Plotting
1/2 mile
2513

