

TABLE OF GEOLOGIC FORMATIONS

5

TERTIARY (?)

Buff, pink or brown rhyolite and felsite flows and related porphyry and fine grained granite dykes. Flow and dyke textures may be ophanitic, porphyritic, banded and/or spherulitic.

4

TERTIARY (?)

Basic and ultrabasic dykes: latite and dacite porphyry, diabase, serpentinite.

3

TERTIARY (?)

Home Granite

Fine to medium grained equigranular pink biotite granite, biotite quartz monzonite and alaskite. Commonly porphyritic and/or miarolytic. Minor propylitic alteration. Sills, stocks, plugs and dykes.

2

LATE CRETACEOUS (?)

Klotassin Granodiorite

Medium to coarse grained hypideomorphic and/or porphyritic grey hornblende (minor biotite) granodiorite, quartz diorite and quartz monzonite. Weak propylitic alteration developed locally. Foliated and gneissic, in part. Related diorite dyke.

1

PRE-CAMBRIAN

Yukon Group

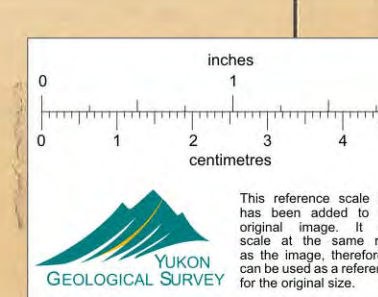
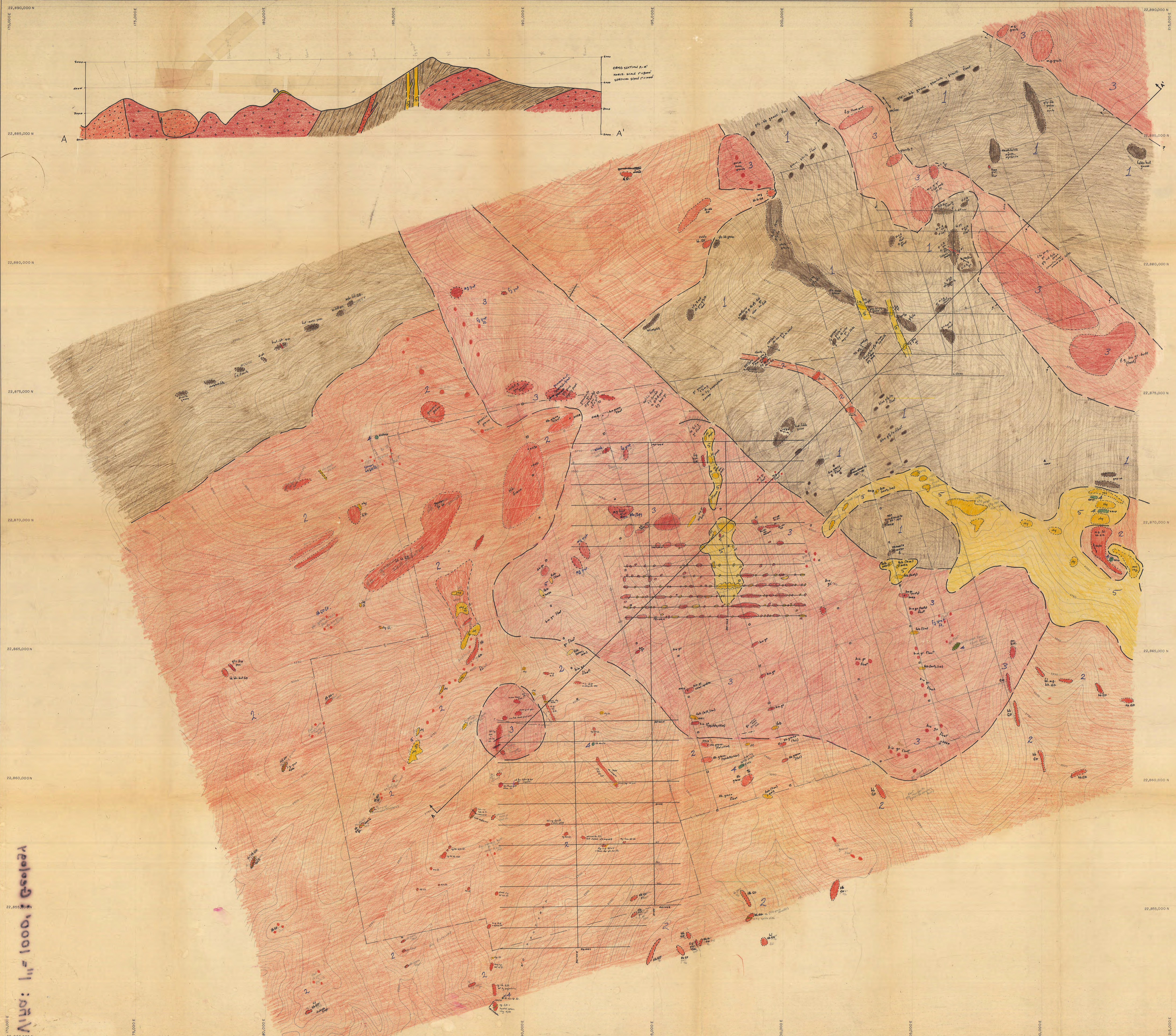
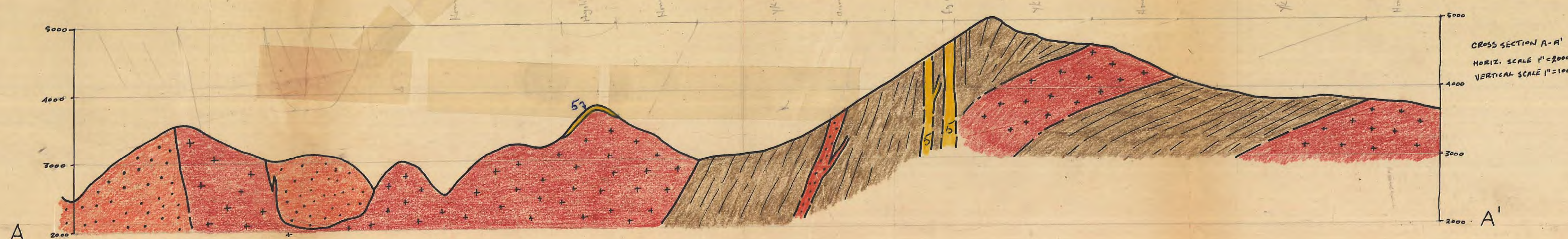
High-grade metamorphic assemblage including granitic and dioritic gneiss, quartz hornblende gneiss, grey to blue quartzite, and amphibolite. Foliation trends northwest to west and dips southward.

**NOTE: NUMBER OF FORMATIONS
CORRESPOND TO GEOLOGIC
MAP OF VINA CLAIMS
APPENDIX III**

**ATLAS EXPLORATIONS
LIMITED**

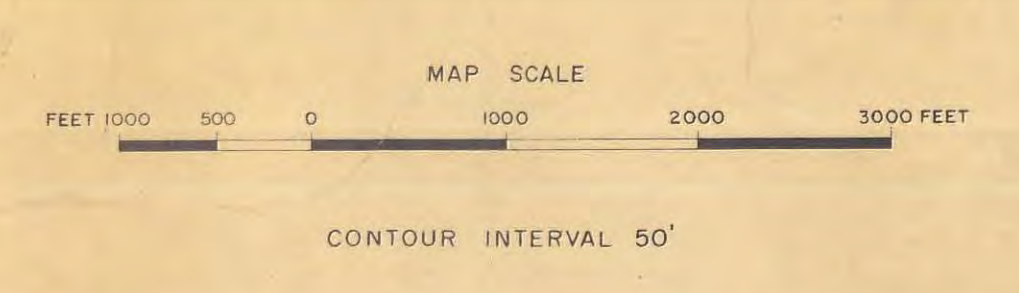
VINA CLAIMS
YUKON TERRITORY 012515

*VINA Geology 1900
original rough copy
115-3-13*



LEGEND

Imagined road	-----
Secondary road	-----
Track or path	-----
Railway	-----
Contours	-----
Contour interval	50'
Water	-----
Stream	-----
Intermittent stream	-----
Spring	-----
Spot elevation	-----
Horizontal control	-----
Vertical control	-----



Scale: 1" = 1000'