

TABLE OF GEOLOGIC FORMATIONS

5

TERTIARY (?)

Buff, pink or brown rhyolite and felsite flows and related porphyry and fine grained granite dykes. Flow and dyke textures may be aphanitic, porphyritic, banded and/or spherulitic.

4

TERTIARY (?)

Basic and ultrabasic dykes latite and dacite porphyry, diabase, serpentinite.

3

TERTIARY (?)

Home Granite

Fine to medium grained equigranular pink biotite granite, biotite quartz monzonite and alaskite. Commonly porphyritic and/or miarolytic. Minor propylitic alteration. Sills, stocks, plugs and dykes

2

LATE CRETACEOUS (?)

Klotassin Granodiorite

Medium to coarse grained hypidiomorphic and/or porphyritic grey hornblende (minor biotite) granodiorite, quartz diorite and quartz monzonite. Weak propylitic alteration developed locally. Foliated and gneissic in part. Related diorite dyke.

1

PRE-CAMBRIAN

Yukon Group

High-grade metamorphic assemblage including granitic and dioritic gneiss, quartz hornblende gneiss, grey to blue quartzite, and amphibolite. Foliation trends northwest to west and dips southward.

**NOTE: NUMBER OF FORMATIONS
CORRESPOND TO GEOLOGIC
MAP OF VINA CLAIMS
APPENDIX III**

VIÑA GROUPGeological Notes

The geology of the Viña claims is fairly complex with several intrusive phases, two prominent fracture directions and a contact with Yukon Group metasedimentary rocks which underlie the northern part of the group. The main rock type is a fine to medium-grained biotite granite (Home Granite) which occurs as an irregular sinuous dyke-like stock intruding the regional batholithic hornblende granodiorite and as small plugs and dykes intruding the metasediments. The granite is variable in composition from a fine to medium-grained alaskite phase commonly showing a strong lineation to medium-grained equigranular biotite granite. Minor diorite, pegmatite, feldspar porphyry and hybrid granite ~~type~~ also occur.

Igneous complexity is greatest near the margins of the stock and all types occur as a profusion of dykes in the adjacent granodiorite.

Two prominent fracture directions, northeasterly and north-northwesterly, occur in the area. These are best developed in the area of the claim group. Nearly all the copper and molybdenum anomalies in the soil and silt occur in the area of the major fracture intersections in the centre of the

group. Two localities where molybdenite was observed are close to one of the northeasterly fractures. In the northeastern part of the group only one molybdenum anomaly occurs, a few copper, and the remainder largely zinc and lead. To the west and southwest zinc anomalies occur exclusively. These indicate a lead-zinc halo around the copper molybdenum mineralization.

A high water anomaly (160 ppb Mo) occurs near the south boundary of the claim group in a spring which drains a down-weathered basin which is reflected by a small magnetic low. The anomaly diminishes to 4 ppb at the mouth of the main stream to the south. Water anomalies of 2 ppb molybdenum were detected in the next drainage to the west.

Pyrite and magnetite mineralization was noted in various localities on the claims.

A well-defined magnetic high low pair occurs in the northern part and a similar pair in the south western part of the group. The central part of the area is occupied by a broad magnetic basin coinciding with the embayment of granodiorite on the east side of the stock.

TABLE OF FORMATIONS

Carmacks Gp. (?) - Tertiary (?)

- 6 Extrusive (a) and Intrusive (b) rhyolite, rhyolite porphyry, aplite, fesslite, etc.
- 5 Intermediate and basic volcanics, mainly andesite, andesite agglomerate and basalt.

Home Granite - Late Mesozoic or Tertiary

- 4 Predominantly fine to medium grained, equigranular biotite granite, quartz monzonite and alaskite, locally microlitic (a) coarse grained granite complex (west central area of 115-J-14) predominately a biotite granite body with an alaskite core and siliceous leucocratic border phase, possibly unrelated to Home granite.
- 3 Basic and ultrabasic intrusive rocks: minor diabase, gabbro and lamprophyre dykes, larger bodies of peridotite (a) gabbro (b) some of which may include volcanic rocks (c).

Casino Granitic Complex - Mesozoic

- 2 Predominantly medium to coarse-grained, hornblende-rich granodiorite and quartz monzonite. Ranges from granite to diorite, commonly foliated (a) Granitic rock of unknown composition (Cairnes 1917)

- 1 Yukon Group - Proterozoic

Schist, gneiss and quartzite

Foliation

Lineation

Faulting

Contacts - controlled

53

15' 54

140° 00'

56

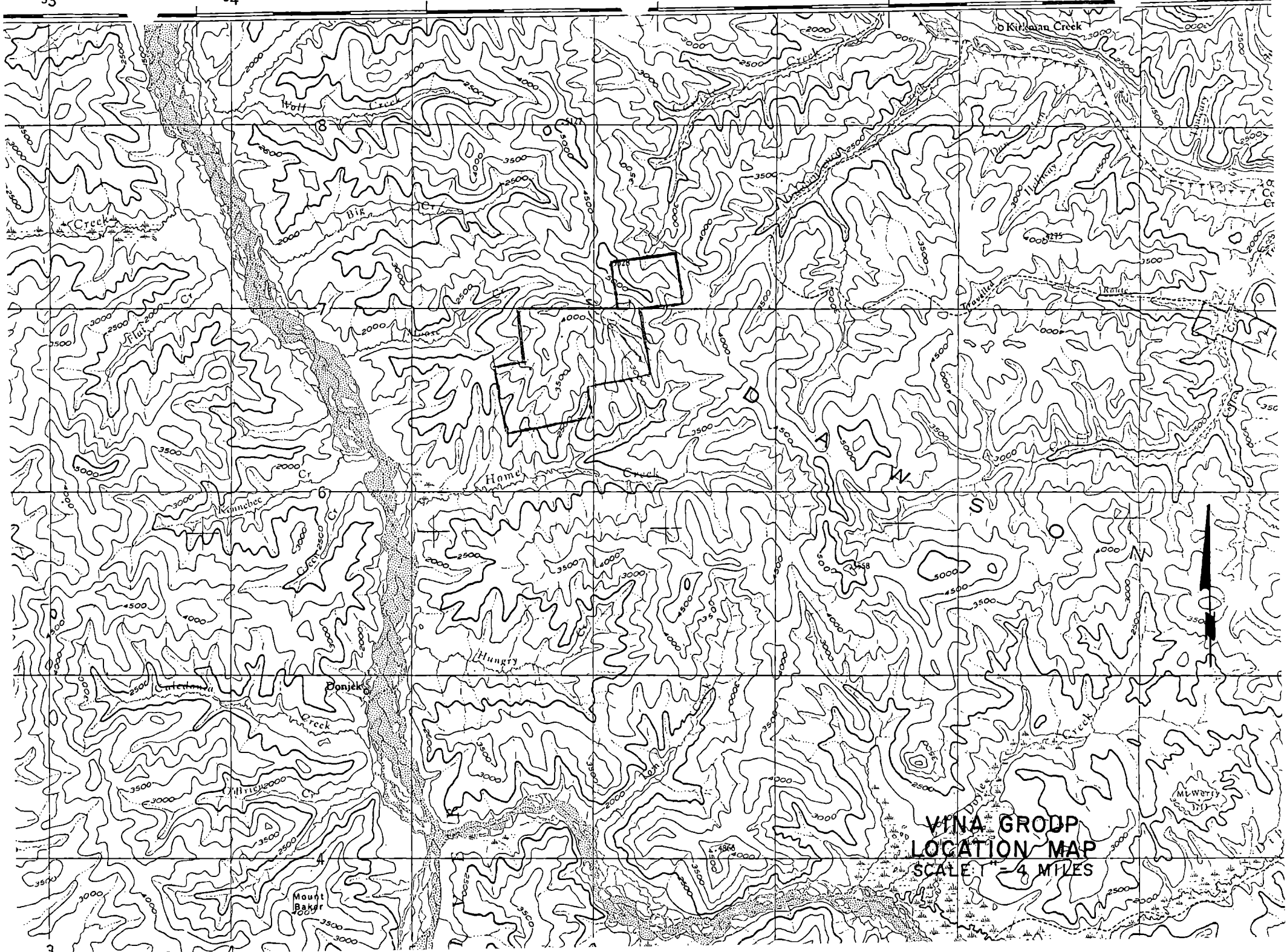
45'

57

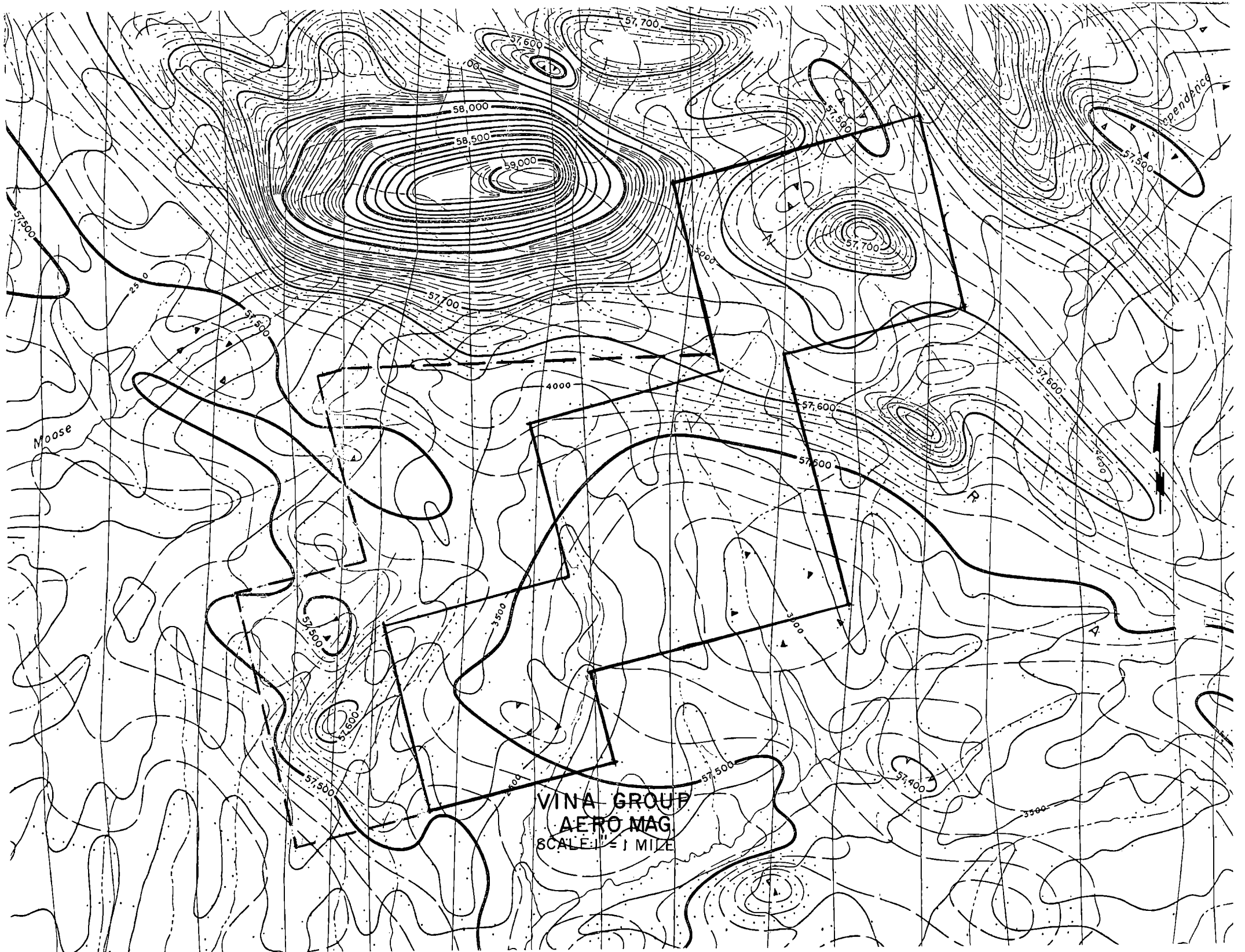
30'

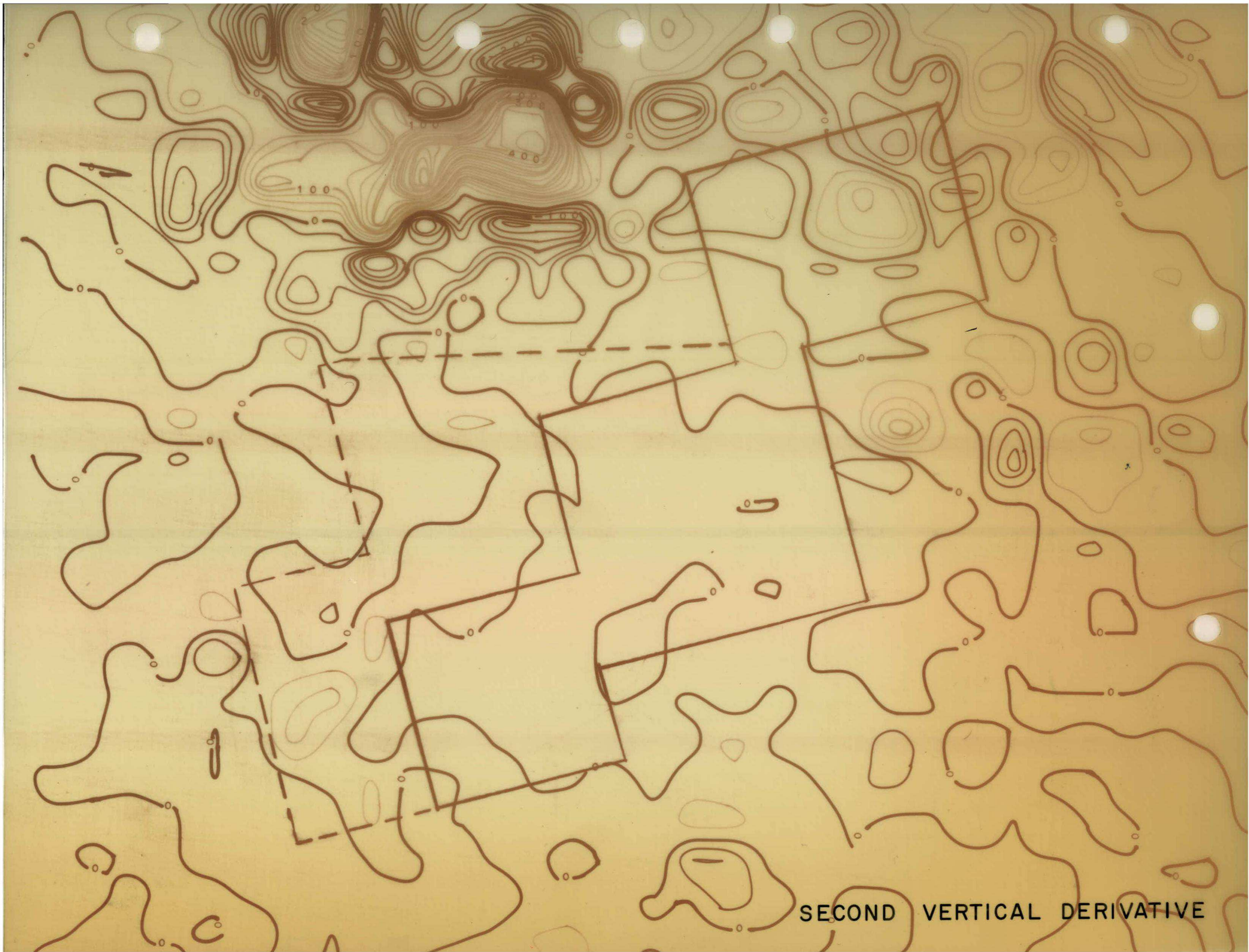
58

15' -9



VINA GRODP
 LOCATION MAP
 SCALE 1" = 4 MILES





SECOND VERTICAL DERIVATIVE

ATLAS EXPLORATIONS LIMITED

DESCRIPTION:

YEAR TO DATE EXPENDITURES

PROJECT NUMBER: 121

BUDGET

NAME: VINA

	JAN	FEB	MAR	APR	MAY	JUNE	JULY	AUG	SEPT	OCT	NOV	DEC
01 Property Examination *												
02 Prospecting *												
03 Staking *									1 151	6 402	6 726	7 014
04 Airborn Surveys *												
05 Linecutting *												
06 Geology *												
07 Geophysics *												
08 Geochemistry *										327	351	332
09 Diamond Drilling *												
10 Physical Work *												
11 Access Roads *												
31 Prop.Acq.& Option Pymts												
32 Participations												
33 Property Maintenance												
41 Expediting										296	305	324
43 Government Grant												
									1 151	7 025	7 382	7 670
Administration:												
44 Incurred										940	677	815
45 Excess												
Allowable										940	677	815
Total Allowable Expenditures									1 151	7 965	8 059	8 485
* See Breakdown on Pages 2, 3, and 4.												

121
 VINA
 NO

ATLAS EXPLORATIONS LIMITED

DESCRIPTION:

YEAR TO DATE EXPENDITURES

PROJECT NUMBER: 121

BUDGET

NAME: VINA

	JAN	FEB	MAR	APR	MAY	JUNE	JULY	AUG	SEPT	OCT	NOV	DEC
01 PROPERTY EXAMINATION												
-1 Salaries & Wages												
-2 Contract Payments												
-3 Field Expenses												
-4 Assays												
-5 Camp Operation												
-6 Freight & Transprtn												
02 PROSPECTING												
-1 Salaries & Wages												
-2 Contract Payments												
-3 Field Expenses												
-4 Assays												
-5 Camp Operation												
-6 Freight & Transprtn												
03 STAKING												
-1 Salaries & Wages										1 145	1 133	1 226
-2 Contract Payments												
-3 Field Expenses										1 490	1 490	1 666
-4 Assays												
-5 Camp Operation										462	462	464
-6 Freight & Transprtn									1 151	3 305	3 641	3 658
									1 151	6 402	6 726	7 014
04 AIRBORN SURVEYS												
-1 Salaries & Wages												
-2 Contract Payments												
-3 Field Expenses												
-4 Assays												
-5 Camp Operation												
-6 Freight & Transprtn												

ATLAS EXPLORATIONS LIMITED

DESCRIPTION:

YEAR TO DATE EXPENDITURES

PROJECT NUMBER: 121

BUDGET

NAME: VINA

	JAN	FEB	MAR	APR	MAY	JUNE	JULY	AUG	SEPT	OCT	NOV	DEC
05 LINECUTTING												
-1 Salaries & Wages												
-2 Contract Payments												
-3 Field Expenses												
-4 Assays												
-5 Camp Operation												
-6 Freight & Transprtn												
06 GEOLOGY												
-1 Salaries & Wages												
-2 Contract Payments												
-3 Field Expenses												
-4 Assays												
-5 Camp Operation												
-6 Freight & Transprtn												
07 GEOPHYSICS												
-1 Salaries & Wages												
-2 Contract Payments												
-3 Field Expenses												
-4 Assays												
-5 Camp Operation												
-6 Freight & Transprtn												
08 GEOCHEMISTRY												
-1 Salaries & Wages										75	75	75
-2 Contract Payments												
-3 Field Expenses										4	4	4
-4 Assays												
-5 Camp Operation										30	30	29
-6 Freight & Transprtn										218	242	224
										327	351	332

ATLAS EXPLORATIONS LIMITED

DESCRIPTION:

YEAR TO DATE EXPENDITURES

PROJECT NUMBER: 121

BUDGET

NAME: VINA

	JAN	FEB	MAR	APR	MAY	JUNE	JULY	AUG	SEPT	OCT	NOV	DEC
09 DIAMOND DRILLING												
-1 Salaries & Wages												
-2 Contract Payments												
-3 Field Expenses												
-4 Assays												
-5 Camp Operation												
-6 Freight & Transprtn												
10 PHYSICAL WORK												
-1 Salaries & Wages												
-2 Contract Payments												
-3 Field Expenses												
-4 Assays												
-5 Camp Operation												
-6 Freight & Transprtn												
11 ACCESS ROADS												
-1 Salaries & Wages												
-2 Contract Payments												
-3 Field Expenses												
-4 Assays												
-5 Camp Operation												
-6 Freight & Transprtn												
21 CAMP OPERATIONS *												
-1 Salaries & Wages												
-2 Groceries										307	307	307
-3 Other Supplies										185	185	185
										492	492	492
22 FREIGHT & TRANSPRTN *												
-1 Supplies to/from field										47	47	47
-2 Trsptn. to/from field									111	92	92	92
-3 Fld.Tsptn.-Helicopter									1 040	3 383	3 383	3 383
-4 Fld.Tsptn.-Fixed Wing											360	360
-5 Fld.Tsptn.-Bombardier												
-6 Fld. Tsptn.-Truck												
									1 151	3 522	3 882	3 882

*Note These Accounts Are Allocated to the Preceding Accounts as -5 and -6 Respectively