

LEO LION & CROWN GROUPSGeological Notes

Leo Lion and Crown claims adjoin Toni Tygre claims on the north and east sides, respectively, and cover part of the south contact area of a large lensoid composite granite stock intruded into Yukon group metasediments.

The pluton is predominantly a coarse-grained biotite granite with a notably more siliceous core and a medium-grained leucocratic border phase. A small feldspar porphyry intrusion was mapped on the north side of the central siliceous granite core and feldspar porphyry dykes are abundant both in the granite and the metasediments.

Pyrite mineralization is widespread and particularly abundant in the metasedimentary rocks covered by the claim groups. Arsenopyrite occurs in a few localities in the granite. High copper and molybdenum anomalies were detected in soils, silts and water samples.

Oblong magnetic highs, separated by low troughs, form a magnetic belt trending northwesterly in coincidence with the regional strike of the Yukon group rocks and the contact zone.

TABLE OF FORMATIONS

Carmacks Gp. (?) - Tertiary (?)

- 6 Extrusive (a) and Intrusive (b) rhyolite, rhyolite porphyry, aplite, fesslite, etc.
- 5 Intermediate and basic volcanics, mainly andesite, andesite agglomerate and basalt.

4 Home Granite - Late Mesozoic or Tertiary

Predominantly fine to medium grained, equigranular biotite granite, quartz monzonite and alaskite, locally miarolitic (a) coarse grained granite complex (west central area of 115-J-14) predominately a biotite granite body with an alaskite core and siliceous leucocratic border phase, possibly unrelated to Home granite.

2 Casino Granitic Complex - Mesozoic

Predominantly medium to coarse-grained, hornblende-rich granodiorite and quartz monzonite. Ranges from granite to diorite, commonly foliated (a) Granitic rock of unknown composition (Cairnes 1917)

1 Yukon Group - Proterozoic

Schist, gneiss and quartzite

140° 00'

56

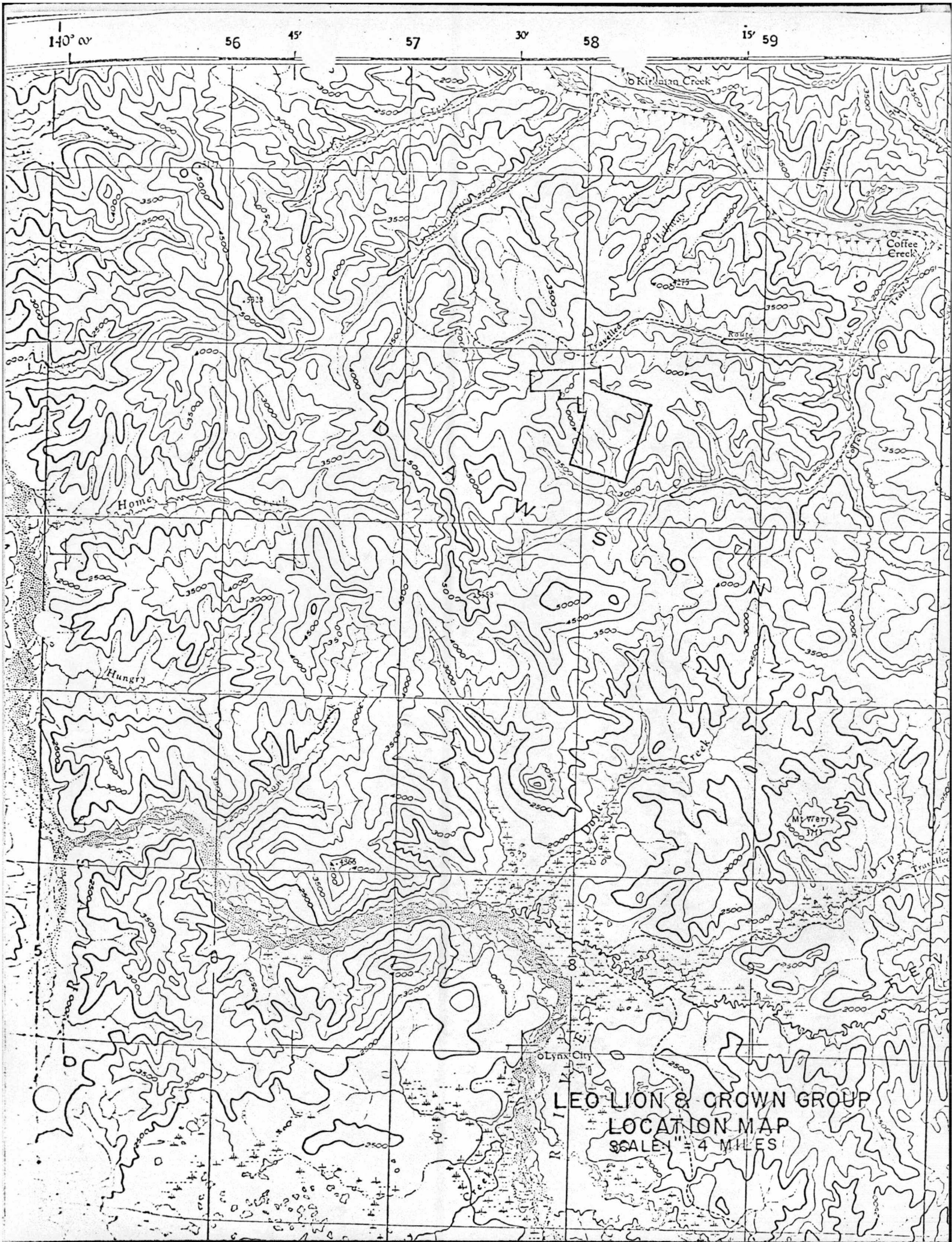
45'

57

30'

58

15' 59



LEO LION & CROWN GROUP
 LOCATION MAP
 SCALE 1" = 4 MILES

