

BREMER (CHECKED PLOTS)

# SHEET 115-J-15

LATITUDE 62° 45' TO 63° 00'  
LONGITUDE 138° 30' TO 139° 00'

## BRITANNIA CREEK

CANADA  
DEPARTMENT OF NORTHERN AFFAIRS AND NATIONAL RESOURCES  
NORTHERN ADMINISTRATION BRANCH  
RESOURCES DIVISION

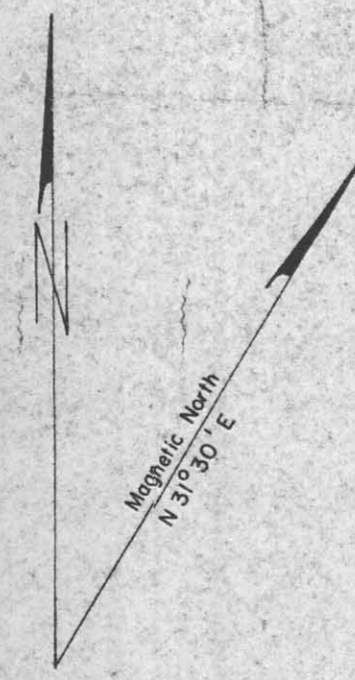
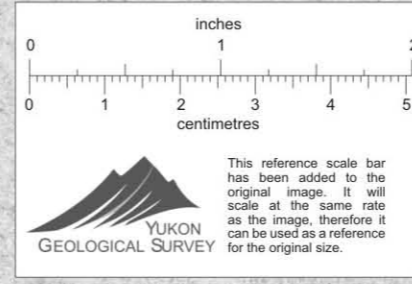
SCALE 1/2 MILE TO 1 INCH

FT. 1500 0 500 1000 1500 2000 2500 3000 3500 4000 4500 5000

ISSUED UNDER THE AUTHORITY OF THE MINISTER  
NORTHERN AFFAIRS AND NATIONAL RESOURCES

### NOTICE

THIS MAP IS ISSUED AS A PRELIMINARY GUIDE FOR WHICH THE DEPARTMENT OF NORTHERN AFFAIRS AND NATIONAL RESOURCES WILL ACCEPT NO RESPONSIBILITY FOR ANY ERRORS OR OMISSIONS WHATSOEVER IN ACCURACY OR COMPLETION. WHAT APPEARS ON THIS SHEET BEFORE ADEQUATE SURVEYS HAVE BEEN MADE.

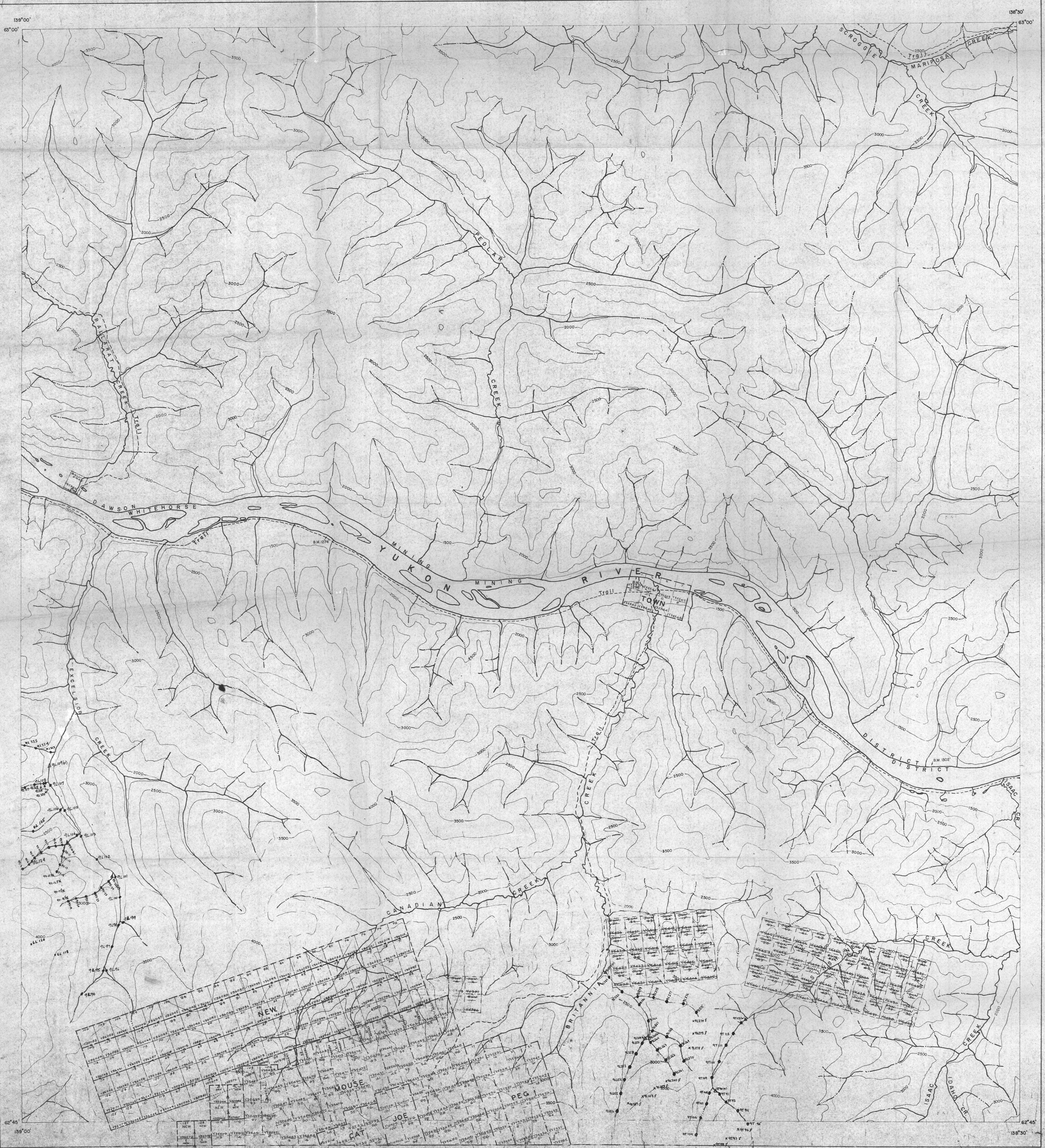


115-O-3	115-O-2	115-O-1
115-J-14	115-J-15	115-J-16
115-U-11	115-U-10	115-U-9

WHITEHORSE 27 Jan 65 28 May 66 11 May 67 10 May 67 27 Jun 69

NOTE: FOR PLACER SEE 115J-15PLACER

PRICE 50 CENTS



115-J-15