

BID GROUPGeological Notes:

The Bid claims are underlain by the southern lobe of an irregular stock of fine- to medium-grained equigranular biotite granite (Home Granite) which intrudes the regional batholithic coarse-grained hornblende granodiorite (Casino granitic complex). Dykes of rhyolite composition cut both rock types commonly near the contact zone. Rhyolite, dacite and andesite flows and pyroclastics outcrop in a discontinuous northwest trending belt immediately to the east and north of the claims. Two areas of rhyolite occur to the west.

In the south central part of the claim group, rubble of acid breccia occurs. The rock is composed of angular fragments of felsite and granite cemented with an aphanitic siliceous matrix. Minor cavities occur in the rock which appear to be of solution origin.

Minor copper and molybdenum mineralization was noted at several localities primarily near the granite-granodiorite contact. Pyrite and magnetite also occur associated with it in places.

Geochemical anomalies are largely molybdenum, either alone or with lead and zinc. Only a few copper anomalies were detected.

Anomalies outwards from the intrusive contact are nearly all zinc and lead. A general separation of lead and zinc seems evident with lead remaining close to and within the stock, and zinc anomalies occurring from a mile to four or five miles away from the contact, both in silts and soils. Detailed soil and rock chip sampling along four claim lines in the eastern part of the claim group was done. The easternmost line has only a few lead and zinc anomalies and the rock is hornblende granodiorite. The second line, which is three claim lengths west of the eastern boundary, has a series of rock chips anomalous in copper, lead and zinc in the southern part, a series of predominantly zinc soil anomalies in the central part, and a few copper, lead and zinc anomalies in the northern part. The third line (5 claim lengths west of the eastern boundary) has the first molybdenum anomalies - a series south of the center and 3 in the northern half; all are low. In the fourth line, near the contact, only one anomaly of interest occurs - a 195 ppm Mo. in a rock chip. The lack of anomalies along this line is surprising in view of the anomalous lines on either side. The sampler on this line, who

was new and inexperienced, and who quit after one day's work, may not have taken samples very carefully in the mossy terrain in this area.

Two oblong magnetic highs occur in the eastern part of the group. A low over the contact in the south western part is drained by a stream with molybdenum silt anomalies, and minor visible molybdenum and copper occur on the ridge to the south and the east.

TABLE OF FORMATIONS

Carmacks Gp. (?) - Tertiary (?)

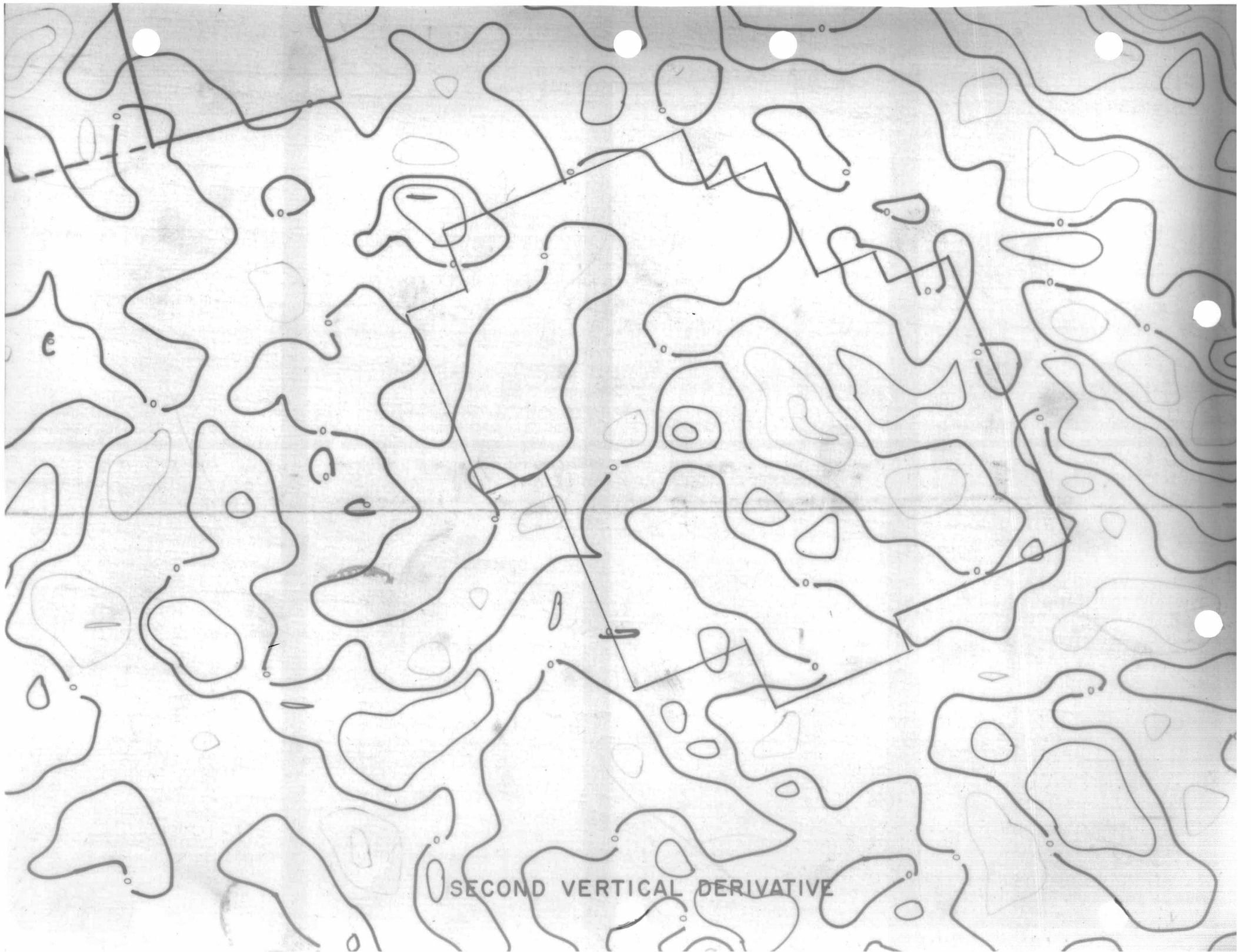
- 6 Extrusive (a) and Intrusive (b) rhyolite, rhyolite porphyry, aplite, fesslite, etc.
- 5 Intermediate and basic volcanics, mainly andesite, andesite agglomerate and basalt.

4 Home Granite - Late Mesozoic or Tertiary

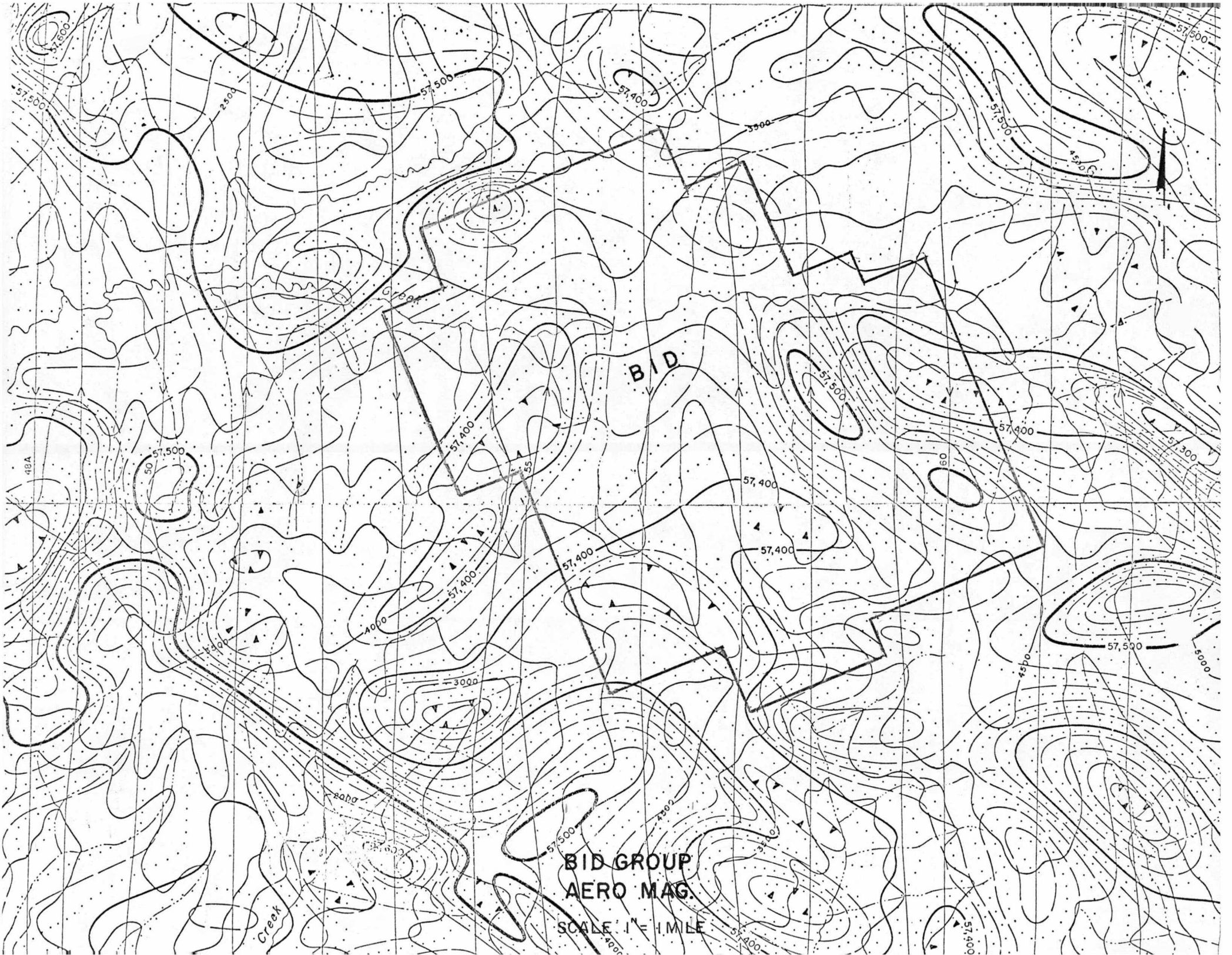
Predominantly fine to medium grained, equigranular biotite granite, quartz monzonite and alaskite, locally miarolitic (a) coarse grained granite complex (west central area of 115-J-14) predominately a biotite granite body with an alaskite core and siliceous leucocratic border phase, possibly unrelated to Home granite.

2 Casino Granitic Complex - Mesozoic

Predominantly medium to coarse-grained, hornblende-rich granodiorite and quartz monzonite. Ranges from granite to diorite, commonly foliated (a) Granitic rock of unknown composition (Cairnes 1917)

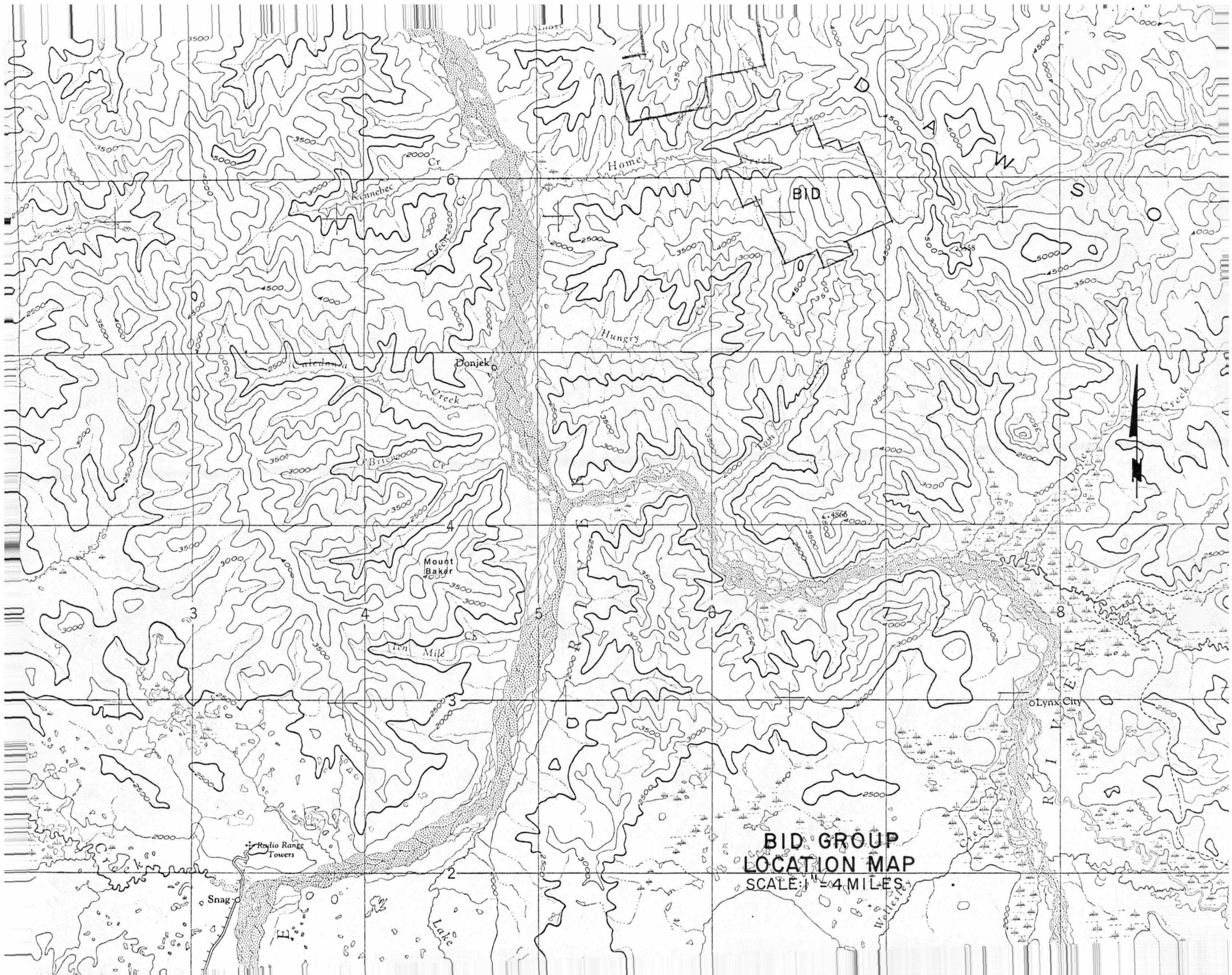


SECOND VERTICAL DERIVATIVE



BID

BID GROUP
AERO MAG.
SCALE 1" = 1 MILE



**BID GROUP
LOCATION MAP**
SCALE: 1" = 4 MILES



6

6

4

3

2

6

6

4

5

5

6

6

4

6

6

6

6

4

8

8

Home

Hungry

Donjek

Mount Baker

Ten Mile

Lynx City

Snag

Radio Range Towers

Lake

BID

A
W
S
O

R
I
V
E
R

ATLAS EXPLORATIONS LIMITED

DESCRIPTION:

YEAR TO DATE EXPENDITURES

PROJECT NUMBER: 122

BUDGET

NAME: BID

	JAN	FEB	MAR	APR	MAY	JUNE	JULY	AUG	SEPT	OCT	NOV	DEC
01 Property Examination *												
02 Prospecting *												
03 Staking *									3 093	5 971	3 057	13 874
04 Airborn Surveys *												
05 Linecutting *												
06 Geology *										147	284	256
07 Geophysics *												
08 Geochemistry *										729	1 411	1 271
09 Diamond Drilling *												
10 Physical Work *												
11 Access Roads *												
31 Prop.Acq.& Option Pymts												
32 Participations												
33 Property Maintenance												
41 Expediting									31	478	537	606
43 Government Grant												
									3 124	7 325	15 289	16 007
Administration:												
44 Incurred									81	1 517	1 189	1 524
45 Excess												
Allowable									81	1 517	1 189	1 524
Total Allowable Expenditures									3 205	8 842	16 478	17 531
* See Breakdown on Pages 2, 3, and 4.												

ATLAS EXPLORATIONS LIMITED

YEAR TO DATE EXPENDITURES

PROJECT NUMBER: 122

DESCRIPTION:

BUDGET

NAME: BID

	JAN	FEB	MAR	APR	MAY	JUNE	JULY	AUG	SEPT	OCT	NOV	DEC
01 PROPERTY EXAMINATION												
-1 Salaries & Wages												
-2 Contract Payments												
-3 Field Expenses												
-4 Assays												
-5 Camp Operation												
-6 Freight & Transprtn												
02 PROSPECTING												
-1 Salaries & Wages												
-2 Contract Payments												
-3 Field Expenses												
-4 Assays												
-5 Camp Operation												
-6 Freight & Transprtn												
03 STAKING												
-1 Salaries & Wages									105	1 681	1 836	2 144
-2 Contract Payments												
-3 Field Expenses										865	2 265	2 527
-4 Assays												
-5 Camp Operation										409	848	861
-6 Freight & Transprtn									2 988	3 016	8 108	8 342
									3 093	5 971	13 057	13 874
04 AIRBORN SURVEYS												
-1 Salaries & Wages												
-2 Contract Payments												
-3 Field Expenses												
-4 Assays												
-5 Camp Operation												
-6 Freight & Transprtn												

ATLAS EXPLORATIONS LIMITED

DESCRIPTION:

YEAR TO DATE EXPENDITURES

PROJECT NUMBER: 122

BUDGET

NAME: BID

	JAN	FEB	MAR	APR	MAY	JUNE	JULY	AUG	SEPT	OCT	NOV	DEC
05 LINECUTTING												
-1 Salaries & Wages												
-2 Contract Payments												
-3 Field Expenses												
-4 Assays												
-5 Camp Operation												
-6 Freight & Transprtn												
06 GEOLOGY												
-1 Salaries & Wages										48	48	48
-2 Contract Payments												
-3 Field Expenses												
-4 Assays												
-5 Camp Operation										12	22	20
-6 Freight & Transprtn										87	214	188
										147	284	256
07 GEOPHYSICS												
-1 Salaries & Wages												
-2 Contract Payments												
-3 Field Expenses												
-4 Assays												
-5 Camp Operation												
-6 Freight & Transprtn												
08 GEOCHEMISTRY												
-1 Salaries & Wages										240	240	240
-2 Contract Payments												
-3 Field Expenses												
-4 Assays												
-5 Camp Operation										58	111	96
-6 Freight & Transprtn										431	1 060	935
										729	1 411	1 271

ATLAS EXPLORATIONS LIMITED

DESCRIPTION:

YEAR TO DATE EXPENDITURES

PROJECT NUMBER: 122

BUDGET

NAME: BID

	JAN	FEB	MAR	APR	MAY	JUNE	JULY	AUG	SEPT	OCT	NOV	DEC
09 DIAMOND DRILLING												
-1 Salaries & Wages												
-2 Contract Payments												
-3 Field Expenses												
-4 Assays												
-5 Camp Operation												
-6 Freight & Transprtn												
10 PHYSICAL WORK												
-1 Salaries & Wages												
-2 Contract Payments												
-3 Field Expenses												
-4 Assays												
-5 Camp Operation												
-6 Freight & Transprtn												
11 ACCESS ROADS												
-1 Salaries & Wages												
-2 Contract Payments												
-3 Field Expenses												
-4 Assays												
-5 Camp Operation												
-6 Freight & Transprtn												
21 CAMP OPERATIONS *												
-1 Salaries & Wages											134	130
-2 Groceries										232	600	600
-3 Other Supplies										247	247	247
										479	981	977
22 FREIGHT & TRANSPRTN *												
-1 Supplies to/from field										58	58	58
-2 Trsptn. to/from field									110	182	328	411
-3 Fld.Tsptn.-Helicopter										3 008	6 720	6 720
-4 Fld.Tsptn.-Fixed Wing									284	284	2 275	2 275
-5 Fld.Tsptn.-Bombardier												
-6 Fld. Tsptn.-Truck									2 594			
									2 988	3 532	9 381	9 464

*Note These Accounts Are Allocated to the Preceding Accounts as -5 and -6 Respectively