

McQUESTEN
4 MILE

PHOTO
A12203-2

11519/11

MAP 1:50,000

N ↑



012627

↓ McQUESTEN &
STEWART R.

STEWART.
RIVER

9B210

9B209

9B206

9B207

9B206

9B205

9B203

9B204

AICEHEST
MTN

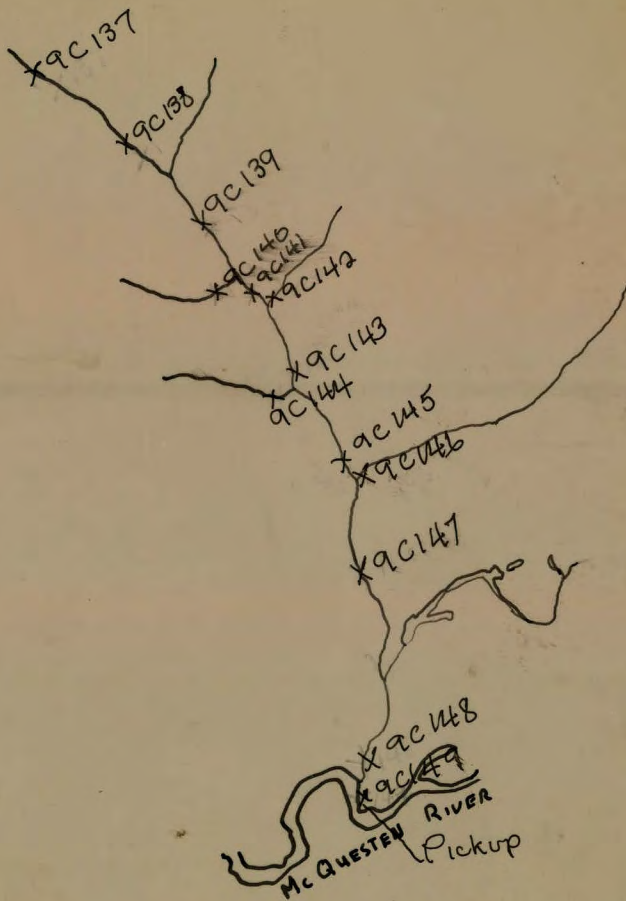
AICEHEST
MTN

McQUESTEN

PHOTO A 12243-3

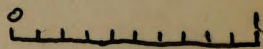
MAP 115P12

X Δ Landing



115 P/11

CHARLIE



June 23/1969

Photos

① A 12203-205

② A 12203-206

NOTE 179

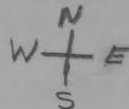
See 115019

Walter Hamilton

24/6/69

115 P/12

See Map 115019

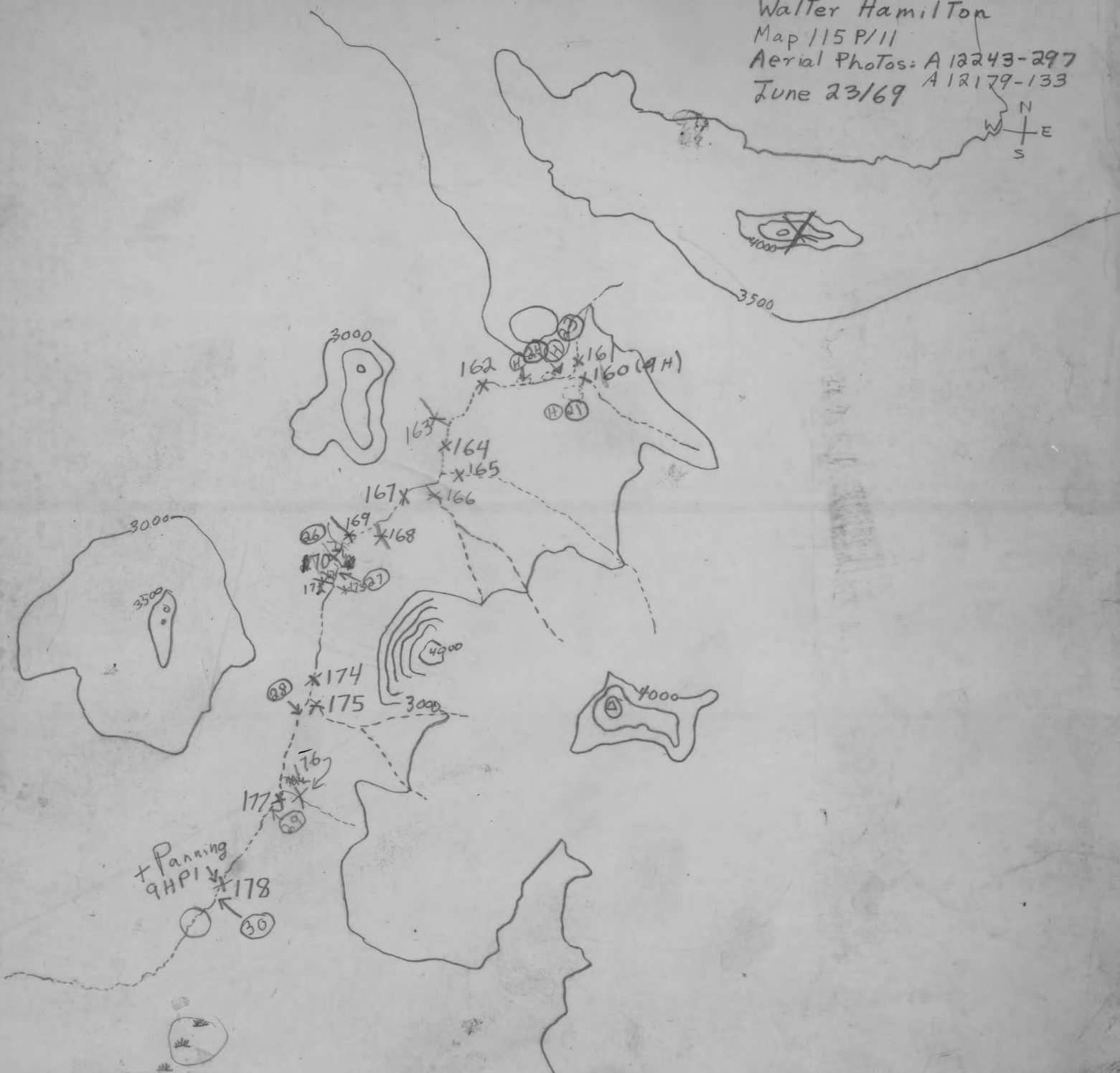
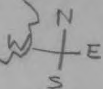


← # ~~180~~-184 inc.
From 3/4 mile To
~~184~~ (off 115 P/12)
West



13A
13B

Walter Hamilton
Map 115 P/11
Aerial Photos: A 12243-297
June 23/69 A 12179-133

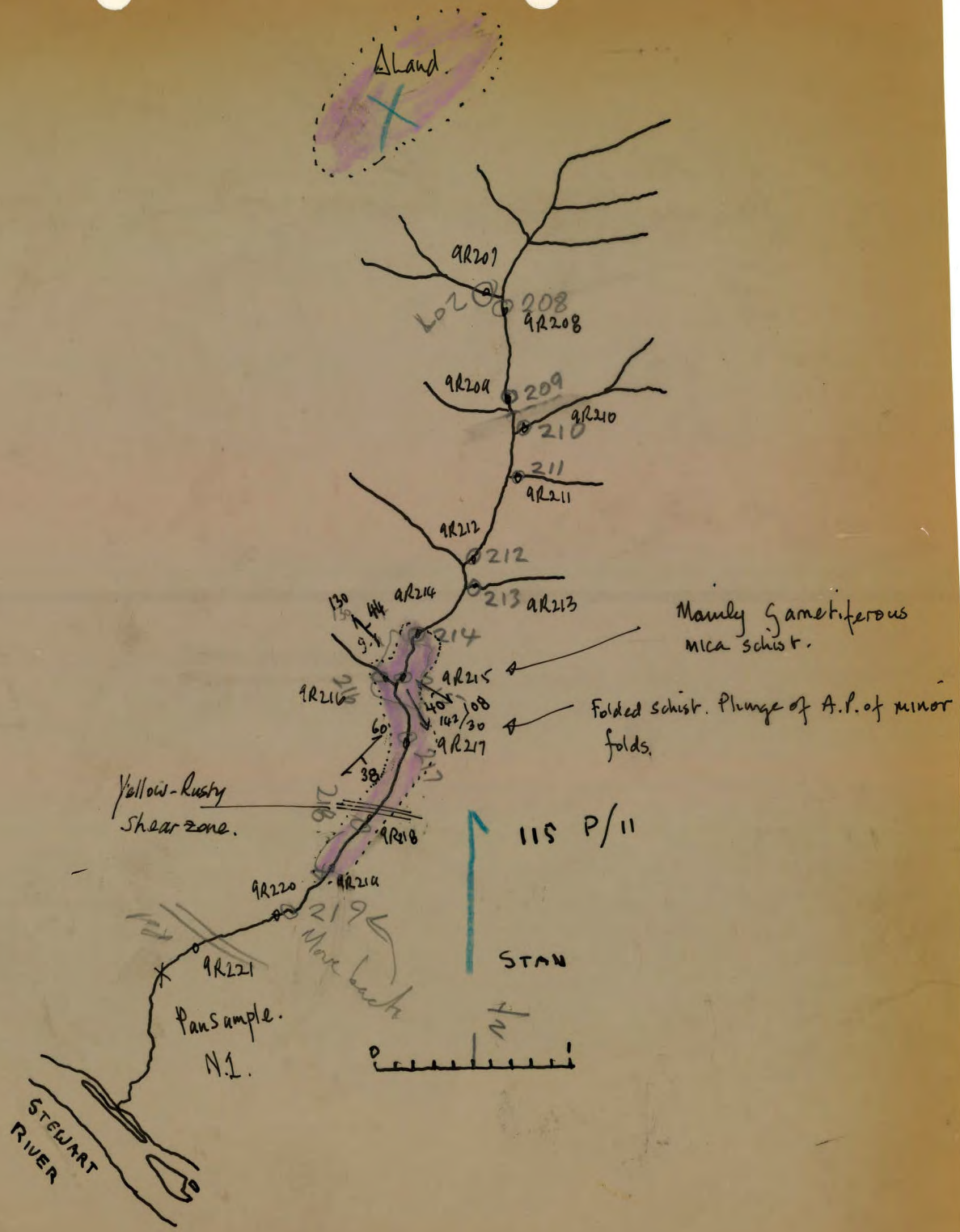


Traverse 11 SP11

SB, Pans bottom.

23.6.69.

Ap no. 12259-250.



Traverse. 21.69. S.B. Leamsbottom.

Sheared d. Basic Body - 115P12

Highly altered.
veins of antigorite
Rosettes of Anthophyllite?
Actinolite?

Area Staked. No's Y15224-5-6-7.





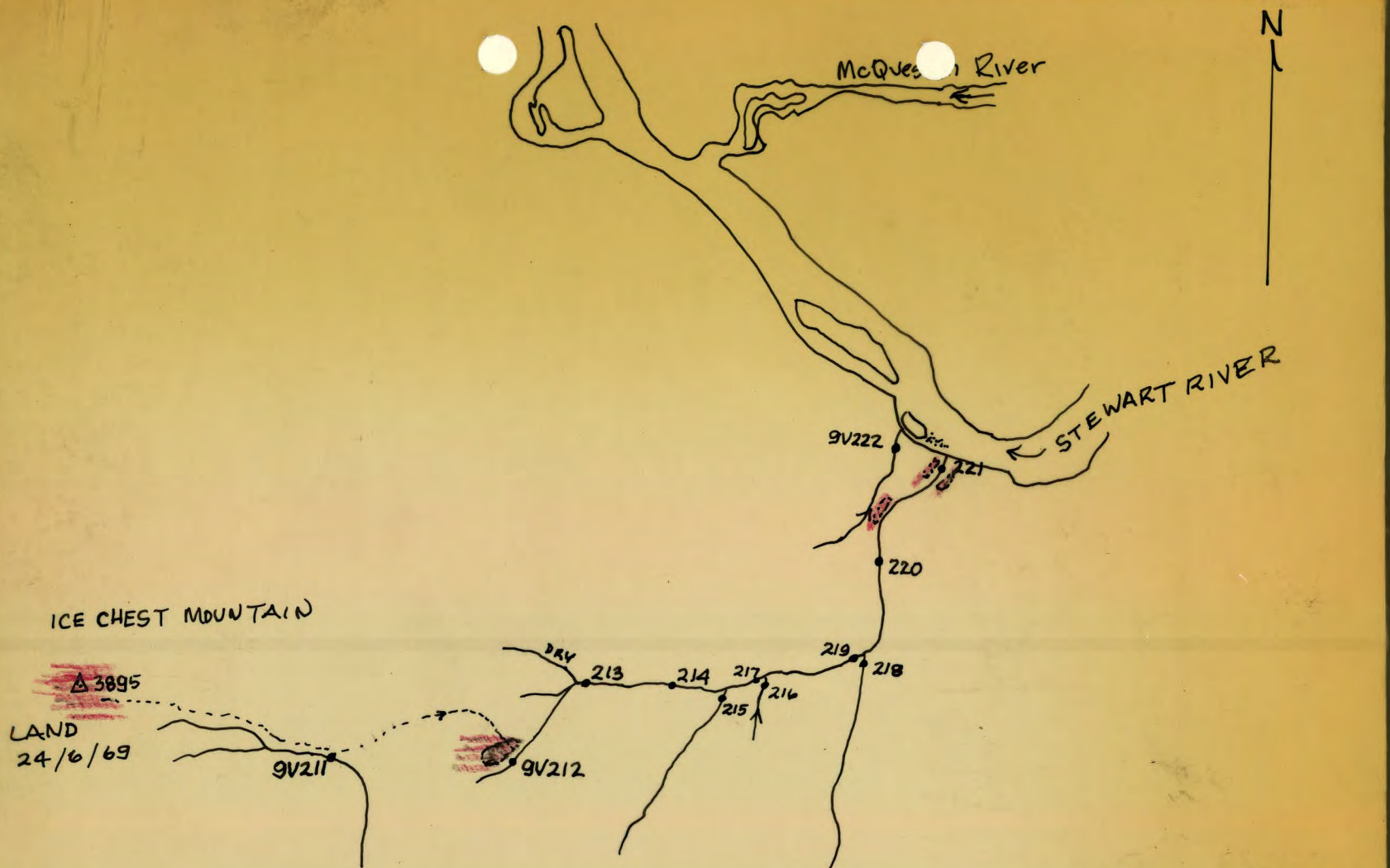
MAP. 115P/11

SCALE: 1:50,000

PHOTO: A12259-380

NAME: G DENTON

DATE: 23/6/69



MAP: 115 P/11 & 12
SCALE: 1:50,000
PHOTO: A12243-304

NAME: G. DENTON
DATE: 24/6/69